



Australian Government
**Department of Industry, Science,
Energy and Resources**

**National
Measurement
Institute**

36 Bradfield Road, West Lindfield NSW 2070

**Supplementary Certificate of Approval
NMI S826**

Issued by the Chief Metrologist under Regulation 60
of the
National Measurement Regulations 1999

This is to certify that an approval for use for trade has been granted in respect of the instruments herein described.

Gilbarco Model T995 Passport POS Control System for Fuel Dispensers for Motor Vehicles

submitted by Gilbarco Australia Pty Ltd
20 Highgate Street
Auburn NSW 2114

NOTE: This Certificate relates to the suitability of the pattern of the instrument for use for trade only in respect of its metrological characteristics. This Certificate does not constitute or imply any guarantee of compliance by the manufacturer or any other person with any requirements regarding safety.

This approval has been granted with reference to document NMI R 117, *Measuring Systems for Liquids Other than Water*, dated June 2011.

This approval is subject to review at the decision of the Chief Metrologist in accordance with the conditions specified in the document NMI P 106.

DOCUMENT HISTORY

Rev	Reason/Details	Date
0	Pattern approved – certificate issued	23/11/21

CONDITIONS OF APPROVAL

General

Instruments purporting to comply with this approval shall be marked with pattern approval number 'NMI S826' and only by persons authorised by the submitter.

It is the submitter's responsibility to ensure that all instruments marked with this approval number are constructed as described in the documentation lodged with the National Measurement Institute (NMI) and with the relevant Certificate of Approval and Technical Schedule. Failure to comply with this Condition may attract penalties under Section 19B of the National Measurement Act and may result in cancellation or withdrawal of the approval, in accordance with document NMI P 106.

Special

Certain aspects of this instrument (in particular transaction record printing formats) are able to be configured by the user. Whilst NMI believes that acceptable formats can be achieved for typical basic sales modes, it is also possible for the instrument to be configured to produce unacceptable formats, and use of some formats may be inappropriate for different sales modes. It is the responsibility of the user to ensure that acceptable and appropriate formats are used in any particular situation.

Signed by a person authorised by the Chief Metrologist to exercise their powers under Regulation 60 of the *National Measurement Regulations 1999*.



Darryl Hines
Manager
Policy and Regulatory Services

TECHNICAL SCHEDULE No S826

1. Description of Pattern **approved on 23/11/21**

A Gilbarco Model T995 Passport POS control system to provide an attended self-service facility for compatible (#) approved fuel dispensers for motor vehicles. The fuel dispensers are controlled by the T995 Passport POS system through the DOMS model PSS5000 Controller (as described in approval NMI S748).

1.1 Key Features

- The system is approved for environmental class A, a climate-controlled environment between 5°C and 30°C.
 - The system can provide a self-serve arrangement for compatible (#) approved fuel dispensers.
 - The system allows post-payment deliveries only.
 - The system allows up to two transactions per fuel dispenser, i.e. current sale on the fuel dispenser and a stored transaction.
 - The system may facilitate mixed-mode operation for unattended self-service mode. A control system that is approved for unattended self-service operation must be interfaced to the Passport POS control system for operation in this mode.
 - Additional POS consoles may be interfaced for multi-attended self-serve operation.
 - The nominal supply voltage is 240 V AC.
- (#) 'Compatible' is defined to mean that no additions/changes to the hardware/software specified in this approval are required for satisfactory operation of the system.

1.2 System Description

The Gilbarco Model Passport POS system (Figure 1) comprises:

(i) Point of Sale (POS) Console

The T995 Passport POS point of sale console comprises a Posiflex model XT-6015 or equivalent (*) PC-based device using a Microsoft Windows operating system running Passport POS version 1.x.xxx software. The software version number is displayed in the lower left corner of the login screen.

(ii) Fuel Dispenser Controller

A DOMS PSS5000 controller as described in the documentation of approval NMI S748, provide interface and data acquisition between the fuel dispensers and the Point of Sale console and allow the recall of the stored transactions under power failure condition.

Note: The Passport POS point of sale system includes alternative checking facilities and the PIPI display described in approval NMI S748 is not required to be connected to the DOMS PSS5000 controller.

(iii) Uninterruptible Power Supply (UPS)

A CyberPower Value Soho 600va/360w or equivalent (*) UPS unit that supports USB/HID power device class standard must be included to provide operation under power failure condition. The UPS is interfaced to the Passport POS point of sale console.

(iv) Electronic Indications

The Posiflex model XT-6015 console or equivalent (*) has an integral touch sensitive display to provide an indication for the operator (Figure 2) and another integral display or equivalent (*) to provide an indication for the customer (Figure 3).

(v) Printing Devices

A Citizen Direct Thermal receipt printer or equivalent (*) is connected to the POS console. A typical record is shown in Figure 4.

(*) 'Equivalent' is defined to mean other proprietary equipment of the same or better specifications requiring no changes to software for satisfactory operation of the complete system.

(vi) Additional System Facilities

In addition, the model T995 Passport POS control system may include point of sale facilities including cash drawers, a magnetic card or barcode reader and EFT facility. The facilities shall not interact with the console in a way that would cause an incorrect indication of the measured volume or price.

1.3 Checking Facilities

(i) Uninterruptible Power Supply (UPS)

The Point of Sale Console monitors the condition of the UPS and if an error condition is detected the Point of Sale Console will prevent the ability to authorise a stored transaction.

(ii) Customer Display

If a connection to the Customer Display from the Point of Sale Console is interrupted or an error occurs with the Point of Sale Console the controller will prevent the ability to authorise a stored transaction.

1.4 Descriptive Markings

The T995 Passport POS console is marked in a clear and permanent manner, in one location, with the following information:

Submittor's name or mark
Serial number or other unique identifier
Pattern approval number	NMI S826

1.5 Verification Provision

Provision is made for the application of a verification mark.

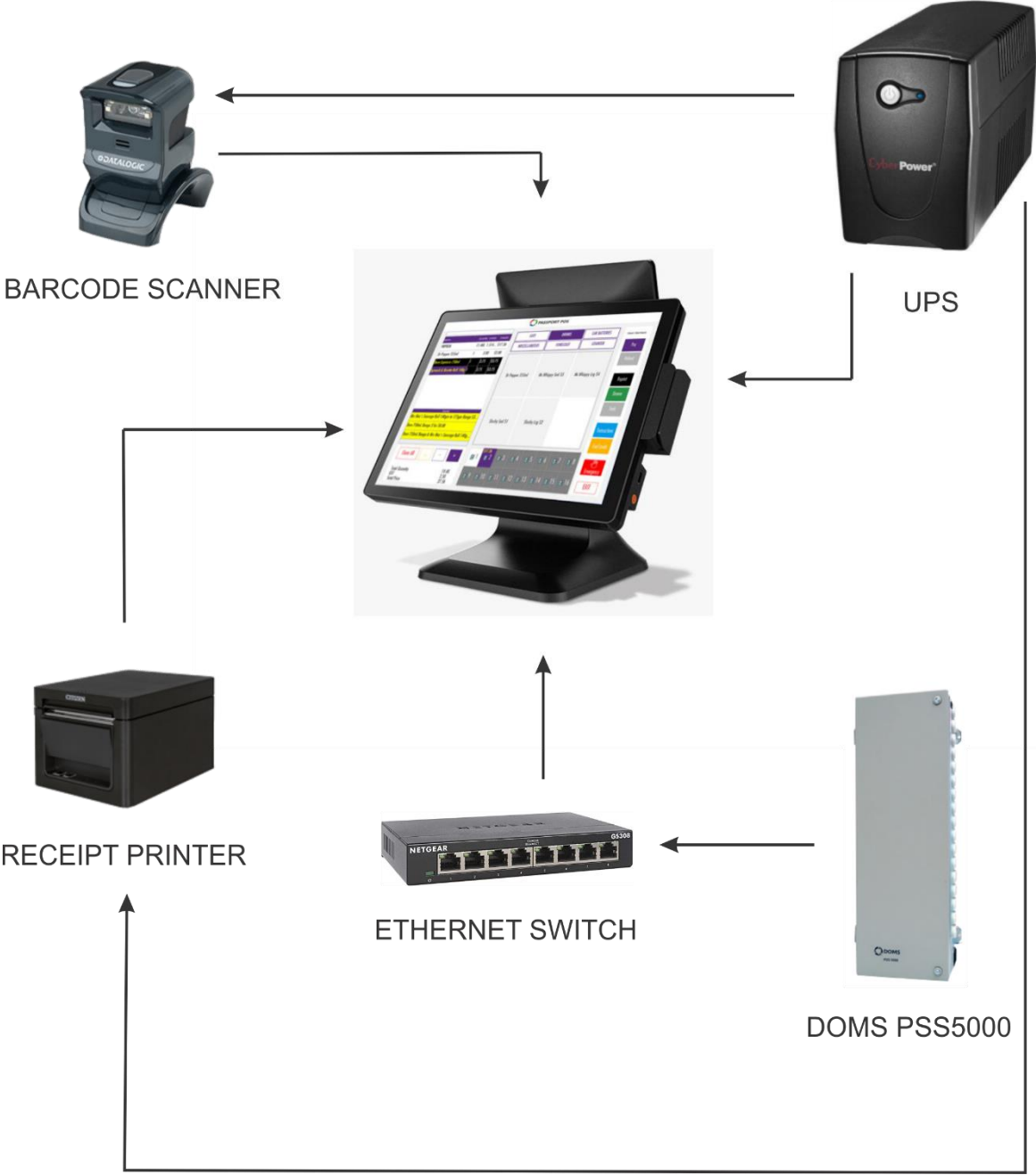
TEST PROCEDURE No S826

Instruments shall be tested in conjunction with any tests specified in the approval documentation for the instruments to which the pattern is connected, as appropriate, and in accordance with the National Instrument Test Procedures.

Points 2-6 are required at commissioning, thereafter they may be conducted at the discretion of the inspecting officer.

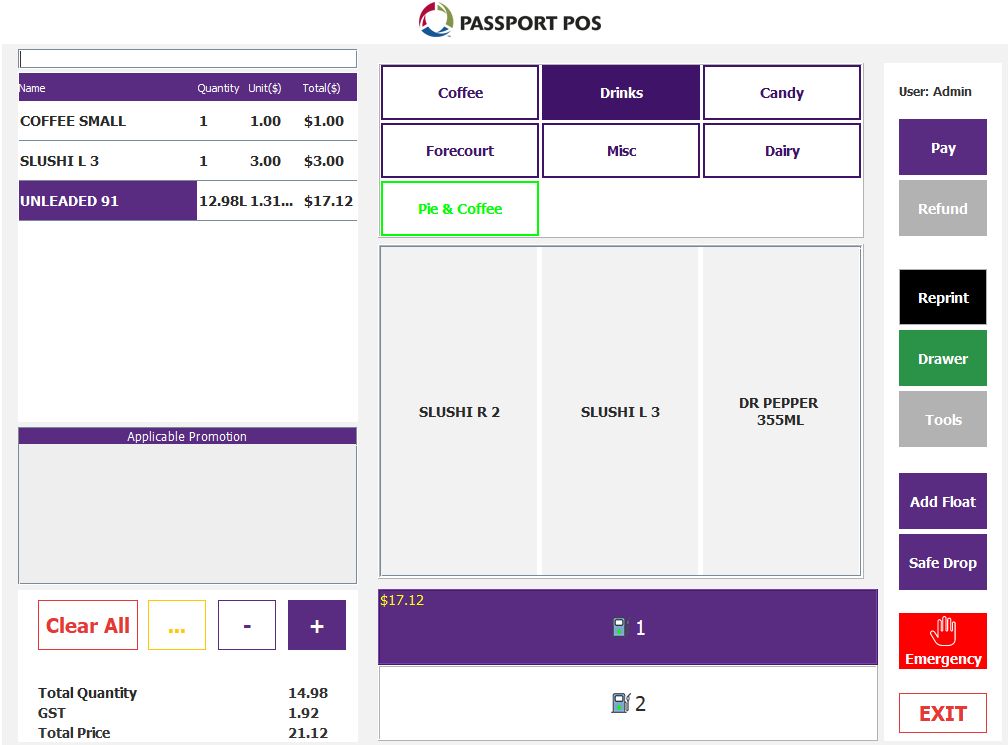
1. Check the T995 Passport POS software version number.
2. Check that the unit price change for the grade of fuel is implemented to the allocated fuel dispensers when they are available for authorisation.
3. Check that the system identifies, displays and prints the correct data for the corresponding number allocated to the fuel dispenser.
4. Authorise a delivery and check that the delivery details on the fuel dispenser agree with the receipt obtained.
5. Check that when the Customer Display is disconnected from the Point of Sale Console (simulation of fault), the fuel dispenser cannot be authorised for a second delivery unless the transaction for the first delivery has been completed.
6. Check that when the Uninterruptible Power Supply is disconnected from the Point of Sale Console (simulation of fault), the fuel dispenser cannot be authorised for a second delivery unless the transaction for the first delivery has been completed.

FIGURE S826 – 1



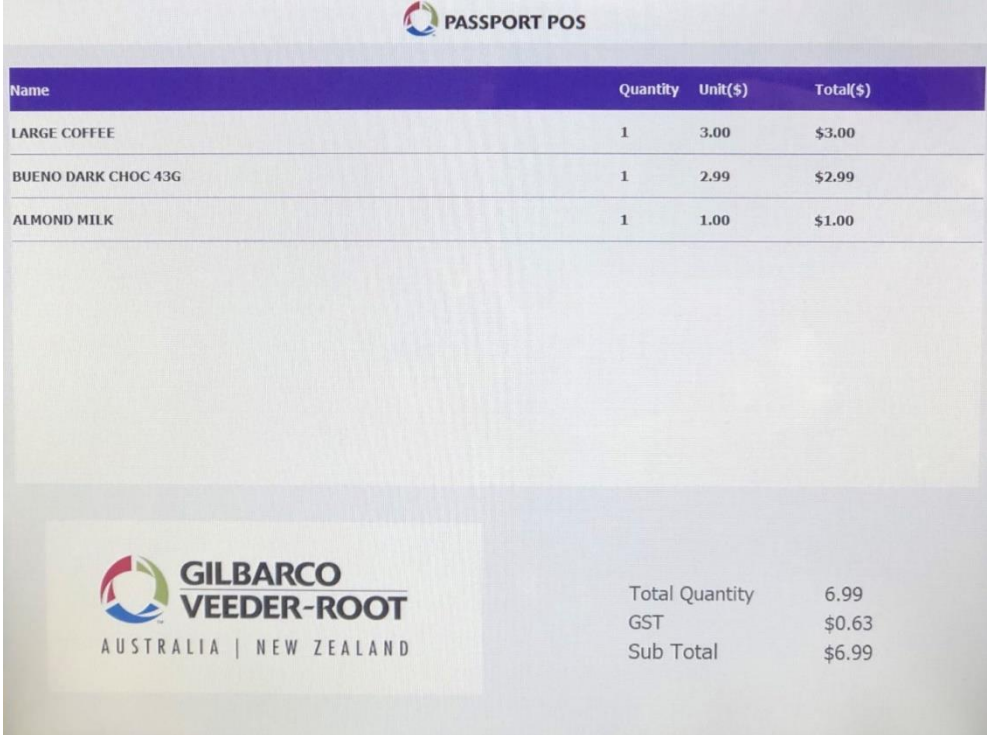
T995 Passport POS Control System

FIGURE S826 – 2



Typical Operator Display

FIGURE S826 – 3



Typical Customer Display

FIGURE S826 – 4

Gilbarco Veeder-Root
20 Highgate St
Auburn 2144, NSW
ABN:123456789
Phone: 61 2 8737 7777

You were served by Admin
2021/10/25 15:25:00

Order No: 26

TAX INVOICE

	QTY	(\$)
(*) COFFEE SMALL	1.00	1.00
—\$1.000 EACH		
(*) UNLEADED 91	12.98 L	17.12
Pump:01 —\$1.319/L		
Sub-Total (Inc. GST):		18.12
GST:		1.65
Rounding:		-0.02
Total (Inc. GST):		18.12



Thanks for shopping with us. Hope to see you again soon.

A Typical Receipt

~ End of Document ~