



Australian Government
Department of Industry, Science,
Energy and Resources

National Measurement Institute

36 Bradfield Road, West Lindfield NSW 2070

Supplementary Certificate of Approval NMI S762

Issued by the Chief Metrologist under Regulation 60
of the
National Measurement Regulations 1999

This is to certify that an approval for use for trade has been granted in respect of the instruments herein described.

Gordyn & Palmer model Genius Point of Sale (POS) System

submitted by Gordyn & Palmer Pty Ltd
46 Melverton Drive
Hallam VIC 3803

NOTE: This Certificate relates to the suitability of the pattern of the instrument for use for trade only in respect of its metrological characteristics. This Certificate does not constitute or imply any guarantee of compliance by the manufacturer or any other person with any requirements regarding safety.

This approval has been granted with reference to document NMI M 7, *Pattern Approval Specifications for Point of Sale Systems*, dated June 2012.

This approval is subject to review at the decision of the Chief Metrologist in accordance with the conditions specified in the document NMI P 106.

DOCUMENT HISTORY

Rev	Reason/Details	Date
0	Pattern provisionally approved – interim certificate issued	31/07/18
1	Patter approved – certificate issued	25/03/21

CONDITIONS OF APPROVAL

General

Instruments purporting to comply with this approval shall be marked with pattern approval number 'NMI S762' and only by persons authorised by the submittor.

Instruments purporting to comply with this approval and currently marked 'NMI PS762' may be re-marked 'NMI S762' but only by persons authorised by the submittor.

It is the submittor's responsibility to ensure that all instruments marked with this approval number are constructed as described in the documentation lodged with the National Measurement Institute (NMI) and with the relevant Certificate of Approval and Technical Schedule. Failure to comply with this Condition may attract penalties under Section 19B of the National Measurement Act and may result in cancellation or withdrawal of the approval, in accordance with document NMI P 106.

Special

Certain aspects of this instrument (in particular transaction record printing formats) are able to be configured by the user. Whilst NMI believes that acceptable formats can be achieved for typical basic sales modes, it is also possible for the instrument to be configured to produce unacceptable formats, and use of some formats may be inappropriate for different sales modes. It is the responsibility of the user to ensure that acceptable and appropriate formats are used in any particular situation.

Special Conditions of Approval: (weighbridges)

The pattern has not been assessed for compliance with requirements which are outside the scope of document NMI M7, including those features which control the automation of weighbridge operation, or ticket formats for public weighbridges, or 'axle weighing' or 'end-and-end weighing'.

This Certificate does not constitute or imply approval for these functions. Details of these requirements can be found on the NMI website.

Signed by a person authorised by the Chief Metrologist to exercise their powers under Regulation 60 of the *National Measurement Regulations 1999*.



Darryl Hines
Manager
Policy and Regulatory Services

TECHNICAL SCHEDULE No S762

1. Description of Pattern **provisionally approved on 31/07/18**

A Gordyn & Palmer model Genius Point of Sale system to provide certain additional facilities for transactions when interfaced to compatible (#) NMI-approved measuring instruments granted with reference to document NMI M7.

1.1 Key Features

- The system provides point of sale arrangements when connected to NMI-approved measuring instruments fitted with Rinstrum model R420 digital indicator (approval NMI S463) or other compatible (#) NMI-approved measuring instruments. NMI-approved measuring instruments may include Summing indicators complying with General Certificate S1/0B.
 - The system receives measurement data from the output interface of the approved measuring instrument and computes prices using a product look up (PLU) facility.
 - The system computes is approved for use for transactions direct to the public.
 - The system is able to apply a tare value up to the maximum capacity of the approved measuring instrument. Tare values may be keyboard-entered or stored.
 - The POS controllers may be connected in a network to share common PLU data, for totalisation, and to accumulate and retrieve management information.
- (#) 'Compatible' is defined to mean that no additions/changes to the hardware/software specified in this approval are required for satisfactory operation of the system.

Note: The measurement data processed by the Genius POS system may be exported for the purposes of determining prices according to existing agreements. These arrangements are not assessed to the requirements of NMI Document M7.

1.2 System Description

The Gordyn & Palmer model Genius POS point of sale system (Figure 1) comprises:

(i) POS Controller

The Gordyn & Palmer model Genius POS controller comprises a PC-based device that operates a Microsoft Windows-based operating system running Genius software version 5.x software. The software version number is displayed on the application window-bottom task bar.

(ii) Electronic Indications

Indications shall satisfy the requirements of document NMI M7, *Pattern Approval Specifications for Point of Sale Systems*.

A PC based model computer monitor, or touch screen panel PC is connected to the POS controller to provide an indication for the operator (Figure 2).

Note: There is no NMI M7 compliant customer display fitted to the POS system.

(iii) Printing Devices

Transaction records shall satisfy the requirements of document NMI M7, *Pattern Approval Specifications for Point of Sale Systems*.

A Xerox DocuPrint C2100 printer or equivalent (*) is connected to the controller to provide transaction record printing facility. A typical record is shown in Figure 3.

Note: Tickets have NOT been assessed for compliance with the requirements for Weighbridge Measurement Tickets as given in relevant Licensing Directives published on the NMI website.

- (*) 'Equivalent' is defined to mean other proprietary equipment of the same or better specifications requiring no changes to the software specified in this approval for satisfactory operation of the system.

(iv) Multiple Instruments Facility

The Genius POS system may be connected to up to 2 approved measuring instruments. The POS system is configured to display which measuring instrument is connected.

The measuring instrument to be used is preselected by the operator prior to assigning the weights against a ticket.

Note: In the case of this feature, each instrument/combination shall be clearly identified to correspond to the appropriate measuring instrument display shown on the POS system display. NMI Trade measurement authorities may require additional markings or signs to ensure that these relationships are clear.

(v) Truck Weighing Functions

Providing functions intended specifically for truck weighing applications, including provision for 'truck and product' identification data to be stored in memory.

The truck weighing functions provide for:

- simple vehicle weighing, where the gross weight of a vehicle is determined by a single weighing;
- first/second weighing, where a vehicle is weighed before and after a loading or unloading operation;
- function keys programmed to perform various functions (such as accessing and searching stored vehicle, item, product or client information).

(vi) Additional System Facilities

In addition, the system may include other facilities including point of sale cash drawers, magnetic card and/or barcode reader and electronic funds transfer (EFT), etc. The facilities shall not interact with the system in a way that would cause an incorrect indication of the measured quantity or price.

1.3 Verification Provision

Provision is made for the application of a verification mark.

1.4 Descriptive Markings

The POS controller is marked in a clear and permanent manner, in one location, with the following information:

Submittor's name or mark
Serial number or other unique identifier
Pattern approval number	NMI S762

(Note: The 'P' in the approval number may be a temporary marking.)

TEST PROCEDURE No S762

The POS system shall be tested in addition to any tests specified in the approval documentation for the measuring instrument/s to which the POS system is connected, as appropriate

The POS system shall be tested in the normal operational mode of the instrument and device, not in 'training mode' or any other management mode.

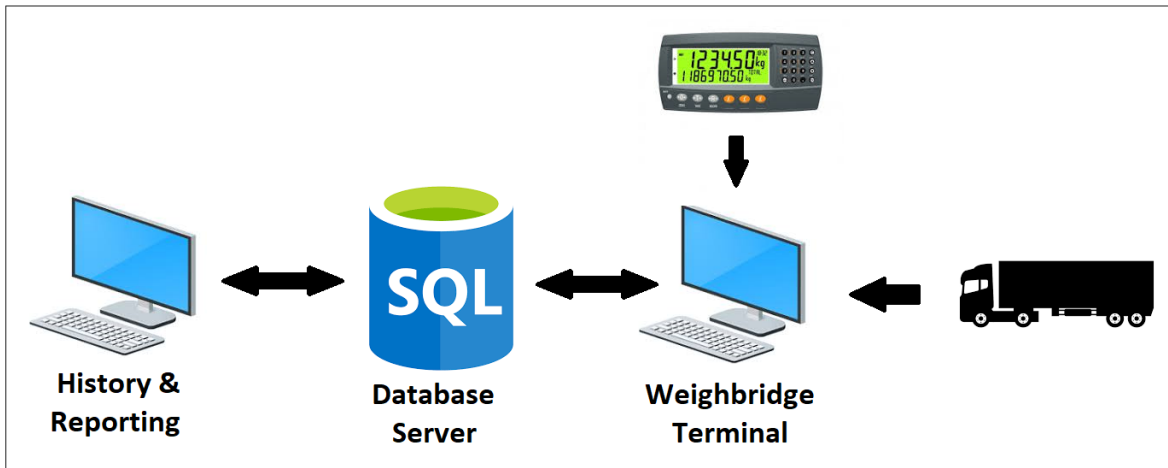
Maximum Permissible Error

The maximum permissible error for price computation is ± 0.5 cent.

TESTS

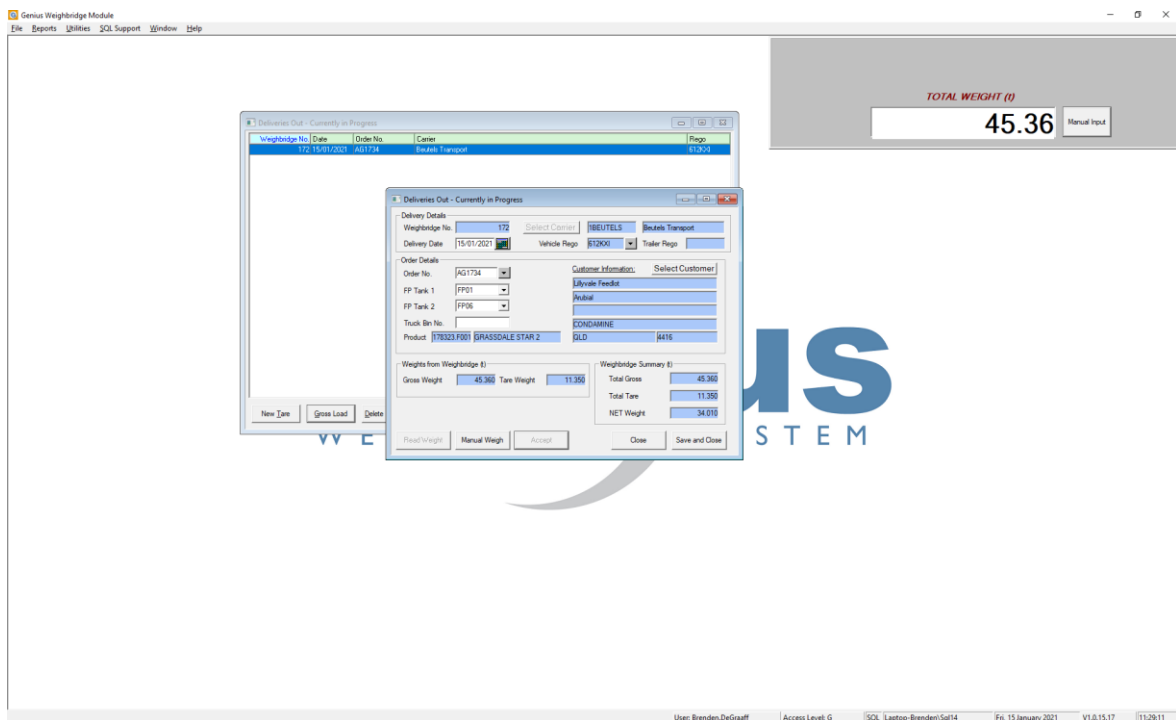
1. Check the software version number/s.
2. Check that the POS system faithfully reproduces the measurement data in the same units and scale interval as the connected approved measuring instrument, e.g. test by using a PLU without a stored tare.
3. Perform a measurement with a preset tare applied and confirm that the POS system correctly calculates and indicates a net measurement result.
4. For network systems check to ensure that the measurement data printed on the transaction record is correctly reproduced.
5. Ensure that electronic indications and printed information are in accordance with document NMI M 7.

FIGURE S762 – 1



Point of Sale (POS) System

FIGURE S762 – 2



Typical Operator Display

FIGURE S762 – 3



Performance Feeds

A.B.N 49 061 399 675 PO Box 990
Tel: (07) 4593 6100 Dalby QLD
Fax: (00) 0000 0000 4405

GOODS OUT WEIGHBRIDGE DOCKET NO.: 171

Order No: AG1734 Required Date: 18-Aug-2020

To: Lillyvale Feedlot Date in: 22-Oct-2020
Arubial Time in: 14:04
Date out: 22-Oct-2020
CONDAMINE QLD, 4416 Time out: 14:05
Carrier: Farmhaul
Rego: 237EIP

Truck Bin No.	Product	FP Tank	Tare (t)	Gross (t)	NET (t)
	178323.F001 - GRASSDALE STAR 2	1,	12.52	43.17	30.65

Operator Signature: Carrier Signature:

A Typical Receipt

~ End of Document ~