



Australian Government
Department of Industry,
Innovation and Science

**National
Measurement
Institute**

Supplementary Certificate of Approval

NMI S735

Issued by the Chief Metrologist under Regulation 60
of the
National Measurement Regulations 1999

This is to certify that an approval for use for trade has been granted in respect of the instruments herein described.

Impos Solutions Model Impos Plus Point of Sale (POS) System

submitted by Impos Solutions International
Suite 3, Level 8, 616 St Kilda Road
MELBOURNE VIC 3004

NOTE: This Certificate relates to the suitability of the pattern of the instrument for use for trade only in respect of its metrological characteristics. This Certificate does not constitute or imply any guarantee of compliance by the manufacturer or any other person with any requirements regarding safety.

This approval has been granted with reference to document NMI M 7, *Pattern Approval Specifications for Point of Sale Systems*, dated June 2012.

This approval becomes subject to review on 1/3/22, and then every 5 years thereafter.

DOCUMENT HISTORY

Rev	Reason/Details	Date
0	Pattern provisionally approved – interim certificate issued	17/11/16
1	Pattern approved – certificate issued	6/02/17

CONDITIONS OF APPROVAL

General

Instruments purporting to comply with this approval shall be marked with pattern approval number 'NMI S735' and only by persons authorised by the submitter.

Instruments purporting to comply with this approval and currently marked 'NMI PS735' may be re-marked 'NMI S735' but only by persons authorised by the submitter.

It is the submitter's responsibility to ensure that all instruments marked with this approval number are constructed as described in the documentation lodged with the National Measurement Institute (NMI) and with the relevant Certificate of Approval and Technical Schedule. Failure to comply with this Condition may attract penalties under Section 19B of the National Measurement Act and may result in cancellation or withdrawal of the approval, in accordance with document NMI P 106.

Special

Certain aspects of this instrument (in particular transaction record printing formats) are able to be configured by the user. Whilst NMI believes that acceptable formats can be achieved for typical basic sales modes, it is also possible for the instrument to be configured to produce unacceptable formats, and use of some formats may be inappropriate for different sales modes. It is the responsibility of the user to ensure that acceptable and appropriate formats are used in any particular situation.

Signed by a person authorised by the Chief Metrologist to exercise their powers under Regulation 60 of the *National Measurement Regulations 1999*.



Mario Zamora

TECHNICAL SCHEDULE No S735

1. Description of Pattern **provisionally approved on 17/11/16**
approved on 6/02/17

An Impos Solutions model Impos Plus point of sale system to provide certain additional facilities for transactions when interfaced to compatible (#) NMI-approved measuring instruments granted with reference to document NMI M7.

1.1 Key Features

- The system provides point of sale arrangements for a Wedderburn model DS-866 self-indicating non-automatic weighing instrument (approval NMI 6/4C/249) or other compatible (#) NMI-approved measuring instruments.
 - The system receives measurement data from the output interface of the approved measuring instrument and computes prices using a product look up (PLU) facility.
 - The system computes total price for multiple items including non-measured items and is approved for use for transactions direct to the public.
 - The system is able to apply a preset tare value up to the maximum capacity of the approved measuring instrument. Preset tare values may be keyboard-entered or stored (e.g. within a PLU facility).
 - The POS controllers may be connected in a network to share common PLU data, for totalisation, and to accumulate and retrieve management information.
- (#) 'Compatible' is defined to mean that no additions/changes to the hardware/software specified in this approval are required for satisfactory operation of the system.

1.2 System Description

The ABC point of sale (POS) system (Figure 1) comprises:

(i) POS Controller

The Impos POS controller comprises a FEC model AerPOS or equivalent (*) PC-based device that operates a Microsoft Windows-based operating system running Impos version 6.xx.xxx software. The software version number is displayed by pressing the information button on the login screen.

- (*) 'Equivalent' is defined to mean other proprietary equipment of the same or better specifications requiring no changes to the software specified in this approval for satisfactory operation of the system.

(ii) Electronic Indications

Indications shall satisfy the requirements of document NMI M7, *Pattern Approval Specifications for Point of Sale Systems*.

The FEC model AerPOS POS controller has an integral touch sensitive display to provide an indication for the operator.

Note: There is no M7-compliant customer display fitted to the POS system.

Information additional to that required by document NMI M7, including totalisation details and product images, may also be indicated.

(iii) Printing Devices

Transaction records shall satisfy the requirements of document NMI M7, *Pattern Approval Specifications for Point of Sale Systems*.

An Epson model TM-T82 printer or equivalent (*) is connected to the controller to provide transaction record printing facility.

(*) 'Equivalent' is defined to mean other proprietary equipment of the same or better specifications requiring no changes to the software specified in this approval for satisfactory operation of the system.

(iv) Additional System Facilities

In addition, the system may include other facilities including point of sale cash drawers, magnetic card and/or barcode reader and electronic funds transfer (EFT), etc. The facilities shall not interact with the system in a way that would cause an incorrect indication of the measured quantity or price.

1.3 Verification Provision

Provision is made for the application of a verification mark.

1.4 Descriptive Markings

The POS controller is marked in a clear and permanent manner, in one location, with the following information:

Submittor's name or mark
Serial number or other unique identifier
Pattern approval number	NMI S735

TEST PROCEDURE No S735

The POS system shall be tested in addition to any tests specified in the approval documentation for the measuring instrument/s to which the POS system is connected, as appropriate

The POS system shall be tested in the normal operational mode of the instrument and device, not in 'training mode' or any other management mode.

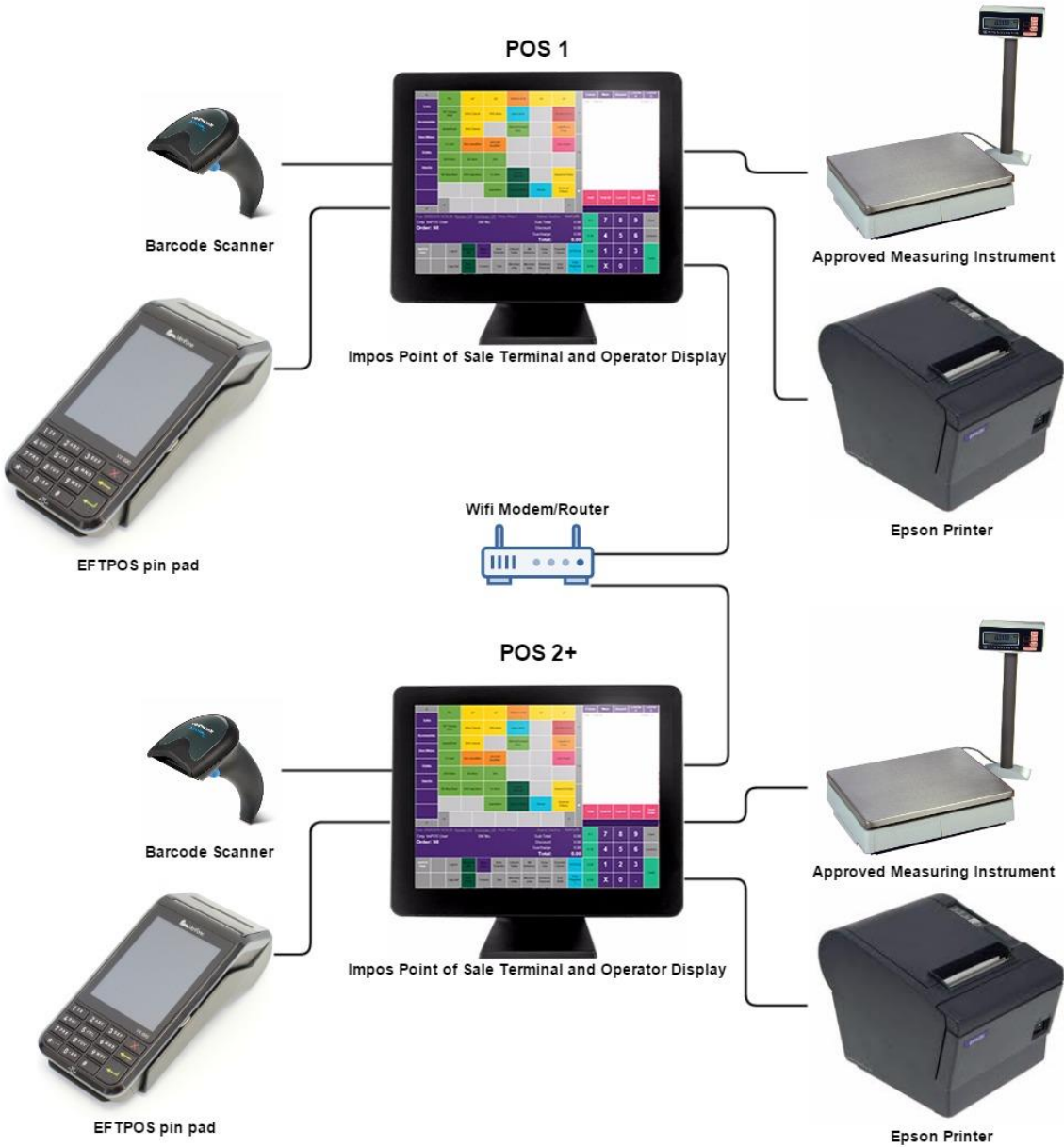
Maximum Permissible Error

The maximum permissible error for price computation is ± 0.5 cent.

TESTS

1. Check the software version number/s.
2. Check that the POS system faithfully reproduces the measurement data in the same units and scale interval as the connected approved measuring instrument, e.g. test by using a PLU without a stored tare.
3. Check that the system performs correct price computation, and computes and indicates a correct unrounded subtotal. For cash payment methods, check that any rounding calculation is correct.
4. Perform a measurement with a preset tare applied and confirm that the POS system correctly calculates and indicates a net measurement result.
5. For network systems check to ensure that the measurement data printed on the transaction record is correctly reproduced.
6. Ensure that electronic indications and printed information are in accordance with document NMI M7.

FIGURE S735 – 1



Point of Sale (POS) System

FIGURE S735 – 2

▲	Cakes	Long Black	Babycino	Strong	Hot	[15]Chai Tea	Entree	Main	Dessert	Course 4	HOLD			
Coffee_Tea	Flat White	Espresso	Kids Hot Choc	Skimny	Decaf	Tea	Qty	Name	\$ Price	C	S			
Drinks	Cappuccino	Long Macchiato	Hot Chocolate	Soy	HMOS	Affogato	0.334	Item with Weight 1	8.02	2				
Food	Magic	Short Macchiato	Item with Weight 1	Almond	HWOS	Menu Search	Up							
Cakes	Piccolo	Risretto	Double	Weak	CMOS	Bill Disc (%)								
TAKE AWAY	LARGE	LARGE SOY	LGE Almond	FILTER	COFFEE MODS	I. Disc (\$)	Void Void All Cancel Recall Send Order							
Discounts	TA Coffee	TA Soy Coffee	TA Chai	TA Large Coffee	TA Large Soy	TA LG Almond								
Alcohol														
▼														
13/01/2017 16:48:05 Receipt: Off Surcharge: Off Price: Default Station: POS1 Hold (off)							\$ 5	7	8	9	Clear			
Emp: Impos Releas Bill No.: Sub Total: 8.02							\$ 10	4	5	6	Table			
Order: 63 Discount: 0.00 Surcharge: 0.00							Total: 8.02							
Impos Release Notes	Log Out	Split By Person	Re-Order	Re-print Bill	Table	Doshii Membership	Get Rewards	Seat No	Check Deposit	\$ 20	1	2	3	Cash
	More Func.	Menu Search	Member Payment	Transfer Check	Tab	Unassign Doshii Member	Refund Deposit	VISA	Redeem Deposit	\$ 50	X	0	.	

Typical Operator Display

FIGURE S735 – 3

Impos Release Notes

Level 8, 616 St Kilda Road, Melbourne
Tel: 1300 780 268
Tax Invoice

=====
Reprint
=====

Order No.: 63

=====
Station: POS1 Staff: Impos Release
Bill:1010000004 Time:13/01/2017 4:49:03 PM

QTY	ITEM	\$	TOTAL
0.334	*Item with Weight 1 0.334 kg NET @ \$24.00/kg		8.02
1	*Cappuccino		4.00
	-- Soy		0.20
1	*Oat Porridge		15.50
		Sub Total:\$	27.72
		(inc. GST):\$	(2.52)
		TOTAL:\$	27.70
		Cash:\$	50.00
		Change:\$	22.30

--POS1 13/01/2017 4:53:42 PM Impos Release Notes--
* Indicates GST inclusive item(s)
Thank you for coming
Have a lovely day

A Typical Receipt

~ End of Document ~