



Australian Government
Department of Industry,
Innovation and Science

National Measurement Institute

Supplementary Certificate of Approval NMI S729

Issued by the Chief Metrologist under Regulation 60
of the
National Measurement Regulations 1999

This is to certify that an approval for use for trade has been granted in respect of the instruments herein described.

Wimmera Software Development Model Grainsoft Point of Sale (POS) System

submitted by Wimmera Software Development Pty Ltd
110 Natimuk Road
HORSHAM VIC 3400

NOTE: This Certificate relates to the suitability of the pattern of the instrument for use for trade only in respect of its metrological characteristics. This Certificate does not constitute or imply any guarantee of compliance by the manufacturer or any other person with any requirements regarding safety.

This approval has been granted with reference to document NMI M7, *Pattern Approval Specifications for Point of Sale Systems*, dated June 2012.

This approval becomes subject to review on 1/04/22, and then every 5 years thereafter.

DOCUMENT HISTORY

Rev	Reason/Details	Date
0	Pattern provisionally approved – interim certificate issued	17/10/16
1	Pattern approved – certificate issued	3/03/17

CONDITIONS OF APPROVAL

General

Instruments purporting to comply with this approval shall be marked with pattern approval number 'NMI S729' and only by persons authorised by the submittor.

Instruments purporting to comply with this approval and currently marked 'NMI PS729' may be re-marked 'NMI S729' but only by persons authorised by the submittor.

It is the submittor's responsibility to ensure that all instruments marked with this approval number are constructed as described in the documentation lodged with the National Measurement Institute (NMI) and with the relevant Certificate of Approval and Technical Schedule. Failure to comply with this Condition may attract penalties under Section 19B of the National Measurement Act and may result in cancellation or withdrawal of the approval, in accordance with document NMI P 106.

Special

Certain aspects of this instrument (in particular transaction record printing formats) are able to be configured by the user. Whilst NMI believes that acceptable formats can be achieved for typical basic sales modes, it is also possible for the instrument to be configured to produce unacceptable formats, and use of some formats may be inappropriate for different sales modes. It is the responsibility of the user to ensure that acceptable and appropriate formats are used in any particular situation.

Special Conditions of Approval: (weighbridges)

The pattern has not been assessed for compliance with requirements which are outside the scope of document NMI M7, including those features which control the automation of weighbridge operation, or ticket formats for public weighbridges, or 'axle weighing' or 'end to end weighing'.

This Certificate does not constitute or imply approval for these functions. Details of these requirements can be found on the NMI website.

Signed by a person authorised by the Chief Metrologist
to exercise their powers under Regulation 60 of the
National Measurement Regulations 1999.

Signed

Stephen Horrocks

TECHNICAL SCHEDULE No S729

1. Description of Pattern **provisionally approved on 17/10/16**
approved on 3/03/17

A Wimmera Software Development model Grainsoft system to provide certain additional facilities for transactions when interfaced to compatible (#) NMI-approved measuring instruments granted with reference to document NMI M7.

1.1 Key Features

- The system provides point of sale arrangements when connected to NMI-approved measuring instruments fitted with a Bilanciai model D800 digital indicator (approval NMI S429) or other compatible (#) NMI-approved measuring instruments.
- Manually entered measurement data shall be indicated as such on a printed transaction record.
- The system is able to apply a tare value up to the maximum capacity of the approved measuring instrument. Preset tare values may be keyboard-entered or stored.
- The POS controllers may be connected in a network to share common data, to accumulate and retrieve management information including information pertaining to pricing, material codes, vendor details, etc.

Note: The measurement data processed by the Grainsoft system may be exported for the purposes of determining prices according to existing agreements. These arrangements are not assessed to the requirements of NMI Document M7.

(#) 'Compatible' is defined to mean that no additions/changes to the hardware/software specified in this approval are required for satisfactory operation of the system.

1.2 System Description

The Wimmera Software Development model Grainsoft system (Figure 1) comprises:

(i) POS Controller

The Grainsoft POS controller is a PC-based device that operates a Microsoft Windows-based operating system running Grainsoft version 2.x.x.xx software. The Grainsoft version number is displayed in the Help-About Dialog box.

(ii) Electronic Indications

Indications shall satisfy the requirements of document NMI M7, *Pattern Approval Specifications for Point of Sale Systems*.

A Dell computer monitor or equivalent (*) is connected to the POS controller to provide an indication for the operator (Figure 2).

Note: There is no M7 compliant customer display fitted to the POS system

(iii) Printing Devices

Transaction records shall satisfy the requirements of document NMI M7, *Pattern Approval Specifications for Point of Sale Systems*.

A Xerox DocuPrint C2100 printer or equivalent (*) is connected to the controller to provide transaction record printing facility. A typical record is shown in Figure 3.

Note: Tickets have NOT been assessed for compliance with the requirements for Weighbridge Measurement Tickets as given in relevant Licensing Directives of the trade measurement section of NMI as published on the NMI website.

(*) 'Equivalent' is defined to mean other proprietary equipment of the same or better specifications requiring no changes to the software specified in this approval for satisfactory operation of the system.

(iv) Multiple Instruments Facility

The Grainsoft POS system may be connected to up to 4 approved measuring instruments. The POS system is configured to display which measuring instrument is connected.

The measuring instrument to be used is preselected by the operator prior to assigning the weights against a ticket.

Note: In the case of this feature, each instrument/combination shall be clearly identified to correspond to the appropriate measuring instrument display shown on the POS system display. Trade measurement authorities may require additional markings or signs to ensure that these relationships are clear.

(v) Truck Weighing Functions

Providing functions intended specifically for truck weighing applications, including provision for 'truck and product' identification data to be stored in memory.

The truck weighing functions provide for:

- simple vehicle weighing, where the gross weight of a vehicle is determined by a single weighing;
- first/second weighing, where a vehicle is weighed before and after a loading or unloading operation;
- function keys programmed to perform various functions (such as accessing and searching stored vehicle, item, product or client information).

(vi) Additional System Facilities

The system may include additional peripheral devices including but not limited to barcode scanning devices, RFID card readers, driver control stations, programmable logic controllers (PLC), input/output controllers, video surveillance cameras, video overlay devices and other plant/site-specific control systems. The facilities shall not interact with the system in a way that would cause an incorrect indication of the measured quantity or price.

1.3 Descriptive Markings

The POS controller is marked in a clear and permanent manner, in one location, with the following information:

Submittor's name or mark
Serial number or other unique identifier
Pattern approval number	NMI S729

TEST PROCEDURE No S729

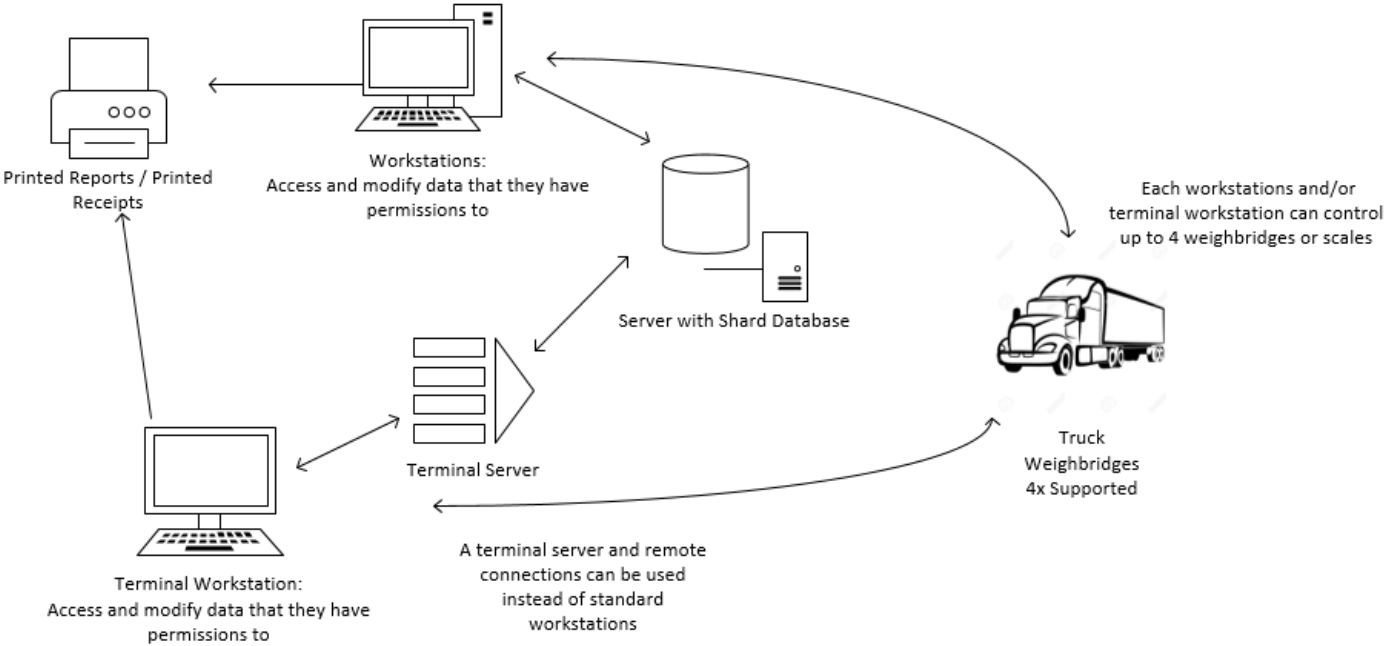
The POS system shall be tested in addition to any tests specified in the approval documentation for the measuring instrument/s to which the POS system is connected, as appropriate

The POS system shall be tested in the normal operational mode of the instrument and device, not in 'training mode' or any other management mode.

TESTS

1. Check the software version number/s.
2. Check that the POS system faithfully reproduces the measurement data in the same units and scale interval as the connected approved measuring instrument, e.g. test by using a PLU without a stored tare.
3. Perform a measurement with a preset tare applied and confirm that the POS system correctly calculates and indicates a net measurement result.
4. Manually enter some pre-determined measurement data and ensure that the printed transaction record clearly indicates the transaction as such.
5. For network systems check to ensure that the measurement data printed on the transaction record is correctly reproduced.
6. Ensure that electronic indications and printed information are in accordance with document NMI M7.

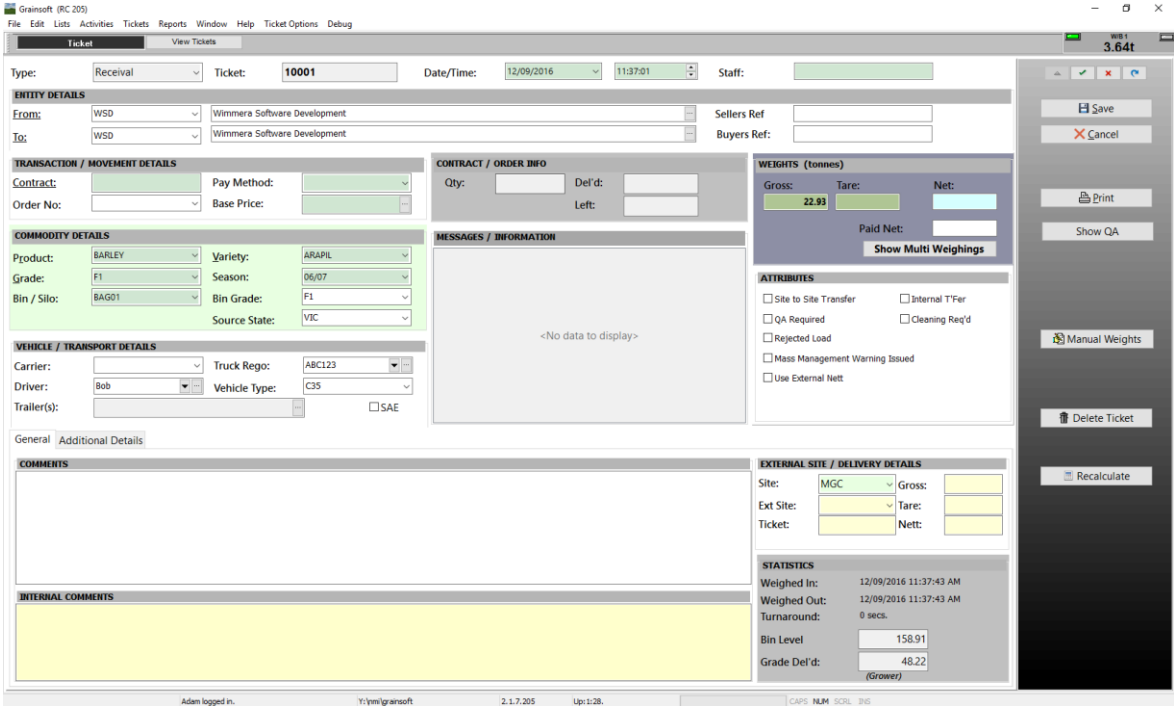
FIGURE S729 – 1



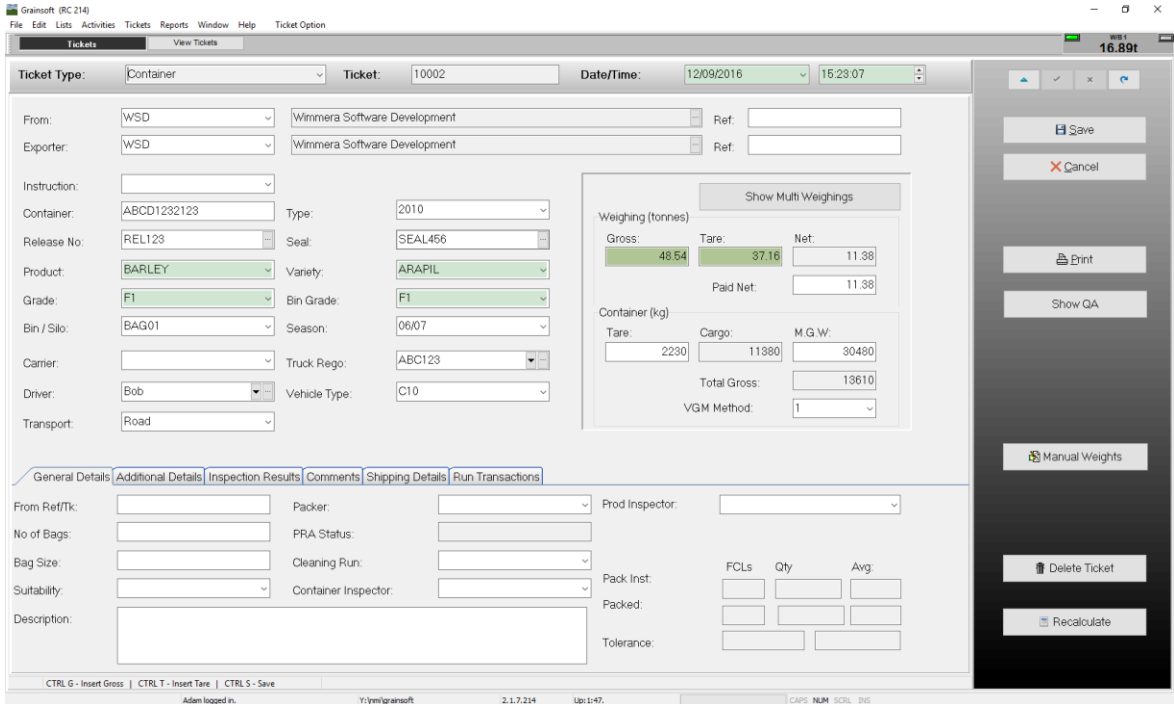
Point of Sale (POS) System

FIGURE S729 – 2

Receival/Outturn Tickets Screen




Container Tickets Screen



Typical Operator Display

Note: Layout may vary depending on the commodity being weighed.

FIGURE S729 – 3

		WSD - NMI PO Box 344 Horsham, Vic 3400 Ph: 03 5033 1216		ABN: 12-345-678-900	
		Reg. Weighbridge No: RWB123456		Receiveal	
Client Name / Buyer		Clients Ref		Date	Weight Ticket
Wimmera Software Development				12/09/2016	10001
Supplier / Trading Name		Suppliers Ref		Time	GROSS
Wimmera Software Development				11:37	
Grower No	Pool / Cash	Carrier	Truck Rego		25.34t* <small>Date: 12/09/2016 Time: 11:37</small>
			ABC123		
Contract No / GMO	Price	Driver Name	Container		TARE
		Bob			
Product	State	Test Results			10.00t* <small>Date: 12/09/2016 Time: 11:37</small>
BARLEY	VIC				
Variety	Site No				NET
Arapiles	MGC				<i>* Weights Manually Entered</i>
Grade	Storage Bin				15.34t
F1	BAG01				<small>Mass Limit Code: C35</small>
External Site / Vessel	Season	Comments			
	06/07				
Weighbridge Operator Signature			Carrier / Grower Signature		
<i>John Doe</i>					

A Typical Ticket

~ End of Document ~