



Australian Government
Department of Industry,
Innovation and Science

National Measurement Institute

Supplementary Certificate of Approval

NMI S658

Issued by the Chief Metrologist under Regulation 60
of the
National Measurement Regulations 1999

This is to certify that an approval for use for trade has been granted in respect of the instruments herein described.

Suntech POS Model POSCAM Point of Sale (POS) System

submitted by Suntech Enterprise P/L
Unit 17, 756 Burwood Hwy
Ferntree Gully VIC 3156

NOTE: This Certificate relates to the suitability of the pattern of the instrument for use for trade only in respect of its metrological characteristics. This Certificate does not constitute or imply any guarantee of compliance by the manufacturer or any other person with any requirements regarding safety.

This approval has been granted with reference to document NMI M 7, *Pattern Approval Specifications for Point of Sale Systems*, dated June 2012.

This approval becomes subject to review on 1/06/21, and then every 5 years thereafter.

DOCUMENT HISTORY

Rev	Reason/Details	Date
0	Pattern provisionally approved – interim certificate issued	2/05/14
1	Pattern approved – interim certificate issued	29/07/15
2	Pattern amended (validity) – interim certificate issued	12/02/16
3	Pattern approved – certificate issued	31/05/16

CONDITIONS OF APPROVAL

General

Instruments purporting to comply with this approval shall be marked with pattern approval number 'NMI S658' and only by persons authorised by the submitter.

Instruments purporting to comply with this approval and currently marked 'NMI PS658' may be re-marked 'NMI S658' but only by persons authorised by the submitter.

It is the submitter's responsibility to ensure that all instruments marked with this approval number are constructed as described in the documentation lodged with the National Measurement Institute (NMI) and with the relevant Certificate of Approval and Technical Schedule. Failure to comply with this Condition may attract penalties under Section 19B of the National Measurement Act and may result in cancellation or withdrawal of the approval, in accordance with document NMI P 106.

Special

Certain aspects of this instrument (in particular transaction record printing formats) are able to be configured by the user. Whilst NMI believes that acceptable formats can be achieved for typical basic sales modes, it is also possible for the instrument to be configured to produce unacceptable formats, and use of some formats may be inappropriate for different sales modes. It is the responsibility of the user to ensure that acceptable and appropriate formats are used in any particular situation.

Signed by a person authorised by the Chief Metrologist to exercise their powers under Regulation 60 of the *National Measurement Regulations 1999*.



Dr A Rawlinson

TECHNICAL SCHEDULE No S658

1. Description of Pattern **provisionally approved on 2/05/14**
approved on 29/07/15

A Suntech POS model POSCAM system to provide certain additional facilities for transactions when interfaced to compatible (#) NMI-approved measuring instruments granted with reference to document NMI M7.

1.1 Key Features

- The system provides point of sale arrangements for a CAS model AP-1 self-indicating non-automatic weighing instrument (approval NMI 6/4C/260A) or other compatible (#) NMI-approved measuring instruments.
- The system receives measurement data from the output interface of the approved measuring instrument and computes prices using a product look up (PLU) facility.
- The system computes total price for multiple items including non-measured items and is approved for use for transactions direct to the public.
- Manually entered measurement data shall be indicated as such on a printed transaction record.
- The POS controllers may be connected in a network to share common PLU data, for totalisation, and to accumulate and retrieve management information.

Note: The POS system is NOT able to apply a tare value.

(#) 'Compatible' is defined to mean that no additions/changes to the hardware/software specified in this approval are required for satisfactory operation of the system.

1.2 System Description

The Suntech POS model POSCAM point of sale (POS) system (Figure 1) comprises:

(i) POS Controller

The Suntech POS model POSCAM POS controller comprises a Posiflex model KS-7215 or equivalent (*) PC-based device that operates a Microsoft Windows-based operating system running POSCAM version 3.3.x.xx legally relevant software module. This version number may be displayed on the 'Help/About' section of the ADMIN software.

(ii) Electronic Indications

Indications shall satisfy the requirements of document NMI M7, *Pattern Approval Specifications for Point of Sale Systems*.

The Posiflex model KS-7215 POS controller has an integral touch sensitive display to provide an indication for the operator (Figure 2).

An LG model L1954TQ display may be connected to the controller to provide an indication for the customer (Figure 3).

Information additional to that required by document NMI M7, including totalisation details and product images, may also be indicated.

(iii) Printing Devices

Transaction records shall satisfy the requirements of document NMI M7, *Pattern Approval Specifications for Point of Sale Systems*.

A CITIZEN model CT-S310II printer or equivalent (*) is connected to the controller to provide transaction record printing facility. A typical record is shown in Figure 4.

(*) 'Equivalent' is defined to mean other proprietary equipment of the same or better specifications requiring no changes to the software specified in this approval for satisfactory operation of the system.

(iv) Additional System Facilities

In addition, the system may include other facilities including point of sale cash drawers, magnetic card and/or barcode reader and electronic funds transfer (EFT), etc. The facilities shall not interact with the system in a way that would cause an incorrect indication of the measured quantity or price.

1.3 Verification Provision

Provision is made for the application of a verification mark.

1.4 Descriptive Markings

The POS controller is marked in a clear and permanent manner, in one location, with the following information:

Submittor's name or mark
Serial number or other unique identifier
Pattern approval number	NMI S658

TEST PROCEDURE No S658

The POS system shall be tested in addition to any tests specified in the approval documentation for the measuring instrument/s to which the POS system is connected, as appropriate

The POS system shall be tested in the normal operational mode of the instrument and device, not in 'training mode' or any other management mode.

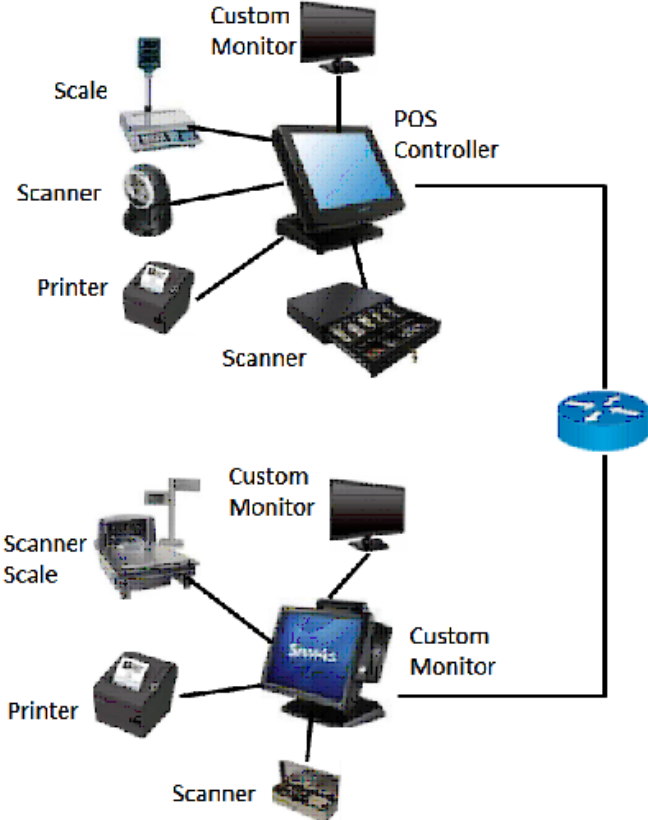
Maximum Permissible Error

The maximum permissible error for price computation is ± 0.5 cent.

TESTS

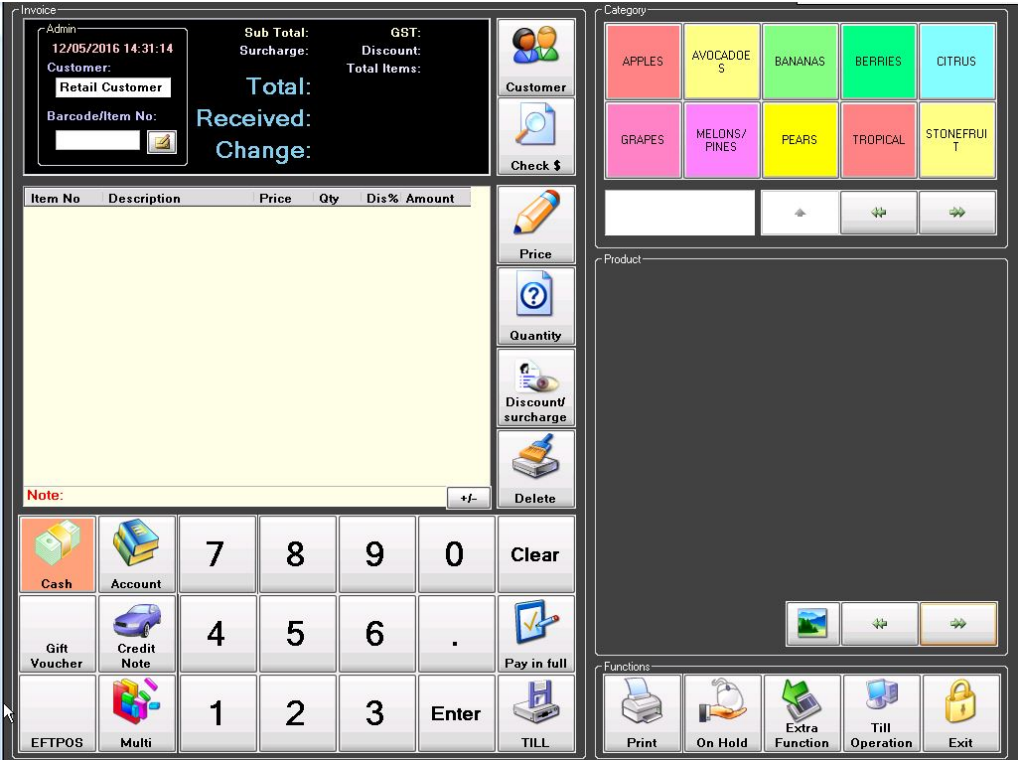
1. Check the software version number/s.
2. Check that the POS system faithfully reproduces the measurement data in the same units and scale interval as the connected approved measuring instrument, e.g. test by using a PLU without a stored tare.
3. Check that the system performs correct price computation, and computes and indicates a correct unrounded subtotal. For cash payment methods, check that any rounding calculation is correct.
4. Manually enter some pre-determined measurement data and ensure that the printed transaction record clearly indicates the transaction as such.
5. For network systems check to ensure that the measurement data printed on the transaction record is correctly reproduced.
6. Ensure that electronic indications and printed information are in accordance with document NMI M7.

FIGURE S658 – 1



Suntech POS Model POSCAM Point of Sale (POS) System

FIGURE S658 – 2



Typical Operator Display

FIGURE S658 – 3

Item Description	Unit Price	Qty	Price
Fuji	\$3.50 /kg	2.200 kg	\$7.70
Monkey	\$5.60 /kg	3.300 kg	\$18.48

Sub Total: \$26.18


Welcome to
SUNTECH DEMO

Typical Customer Display

FIGURE S658 – 4

SUNTECH DEMO
Unit 17, 756 Burwood Hwy
Ferntree Gully, VIC 3150
Phone: (03)9758 1008

Tax Invoice
ABN No.
Invoice No. S0000001

Sales ID: 1234 Till No. 1
Date: 12/05/2016 Time: 2:35 PM

=====

Fuji *	2.200 kg @ \$3.50/kg	\$7.70
Monkey *	3.300 kg @ \$5.60/kg	\$18.48

=====

* Taxable Items

Subtotal:	\$26.18
Rounding:	\$0.02
Total:	\$26.20
Cash:	\$26.20

Change:	\$0.00
GST Inclusive:	\$2.38

A Typical Receipt