



Australian Government
Department of Industry,
Innovation and Science

National Measurement Institute

Supplementary Certificate of Approval NMI S642

Issued by the Chief Metrologist under Regulation 60
of the
National Measurement Regulations 1999

This is to certify that an approval for use for trade has been granted in respect of the instruments herein described.

Marketstall Model EDGEPoS Point of Sale (POS) Control System for Fuel Dispensers for Motor Vehicles

submitted by Marketstall Australia PTY Ltd
Suite 9, Level 1, 445 Keilor Road
Niddrie VIC 3042

NOTE: This Certificate relates to the suitability of the pattern of the instrument for use for trade only in respect of its metrological characteristics. This Certificate does not constitute or imply any guarantee of compliance by the manufacturer or any other person with any requirements regarding safety.

This approval of the pattern has been granted with reference to document NMI R 117-1, Measuring Systems for Liquids Other than Water, July 2004.

The approval of variant 1 has been granted with reference to document NMI M7, *Pattern Approval Specifications for Point of Sale Systems*, dated June 2012.

This approval becomes subject to review on **1/07/19**, and then every 5 years thereafter.

DOCUMENT HISTORY

Rev	Reason/Details	Date
0	Pattern provisionally approved – interim certificate issued	14/06/13
1	Pattern & variant 1 approved – interim certificate issued	26/02/15
2	Pattern & variant 1 approved – certificate issued	16/05/17
3	Variant 1 amended (Software description) – Variant 2 approved – certificate issued	27/07/17

CONDITIONS OF APPROVAL

General

Instruments purporting to comply with this approval shall be marked with pattern approval number 'NMI S642' and only by persons authorised by the submitter.

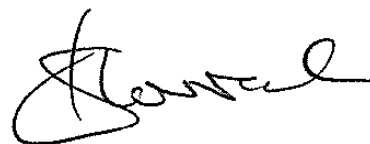
Instruments purporting to comply with this approval and currently marked 'NMI PS642' may be re-marked 'NMI S642' but only by persons authorised by the submitter.

It is the submitter's responsibility to ensure that all instruments marked with this approval number are constructed as described in the documentation lodged with the National Measurement Institute (NMI) and with the relevant Certificate of Approval and Technical Schedule. Failure to comply with this Condition may attract penalties under Section 19B of the National Measurement Act and may result in cancellation or withdrawal of the approval, in accordance with document NMI P 106.

Special

Certain aspects of this instrument (in particular transaction record printing formats) are able to be configured by the user. Whilst NMI believes that acceptable formats can be achieved for typical basic sales modes, it is also possible for the instrument to be configured to produce unacceptable formats, and use of some formats may be inappropriate for different sales modes. It is the responsibility of the user to ensure that acceptable and appropriate formats are used in any particular situation.

Signed by a person authorised by the Chief Metrologist
to exercise their powers under Regulation 60 of the
National Measurement Regulations 1999.



Mr Stephen Horrocks

TECHNICAL SCHEDULE No S642

1. Description of Pattern **provisionally approved on 14/06/13**
approved 26/02/15

A Marketstall model EDGEPoS point of sale control system to provide an attended self-service facility for compatible (#) approved fuel dispensers for motor vehicles. The fuel dispensers are controlled by the EDGEPoS point of sale system through the Integration Technologies Enabler 3 PCI (as described in approval NMI S518).

- The system is approved for environmental class A, a climate-controlled environment between 5°C and 30°C.
 - The system can provide a self-serve arrangement for compatible (#) approved fuel dispensers.
 - The system allows post-payment or pre-payment deliveries; in the latter case the fuel dispenser must incorporate a pre-set device.
 - The system allows up to two transactions per fuel dispenser, i.e. current sale on the fuel dispenser and a stored transaction.
 - Additional POS consoles may be interfaced for multi-attended self-serve operation.
 - The nominal supply voltage is 240 V AC.
- (#) 'Compatible' is defined to mean that no additions/changes to the hardware/software specified in this approval are required for satisfactory operation of the system.

1.2 System Description

The Marketstall model EDGEPoS point of sale (POS) system (Figure 1) comprises:

(i) Point of Sale (POS) Console

The point of sale console comprises a Partner model PT-6215 or equivalent (*) PC-based device using a Microsoft Windows operating system running EDGEPoS version 3.x.xx software. The software version number is displayed at the top of the operator screen at all times.

(ii) Electronic Indications

A Partner model PT-6215 touch sensitive computer monitor or equivalent (*) is connected to the POS controller to provide an indication for the operator (Figure 2).

A Partner model CD-7220 computer monitor or equivalent (*) is connected to the controller and provides an indication for the customer (Figure 3).

A Bixolon model BCD-1000 2 line display or equivalent (*) may be connected to the controller as an alternate indication for the customer (Figure 4).

(iii) Printing Devices

An Epson model TM88 receipt printer or equivalent (*) is connected to the POS console. This also acts as the audit trail printer. The printer automatically prints fuel delivery details when a measurement result is stored in memory and a second delivery authorised. A typical record is shown in Figure 5. In a configuration with multiple POS consoles, the audit trail printer is connected to each individual console.

- (*) 'Equivalent' is defined to mean other proprietary equipment of the same or better specifications requiring no changes to the software specified in this approval for satisfactory operation of the system.

(iv) Server Computer

The server computer comprises a Hewlett Packard model 6300 computer or equivalent (*) with an Integration Technologies model Enabler series forecourt flowmeter controller as described in approval NMI S518. The server computer operates as a database server for the POS consoles.

(v) Additional System Facilities

In addition, the model EDGEPoS point of sale control system may include point of sale facilities including cash drawers, a magnetic card or barcode reader and EFT facility. The facilities shall not interact with the console in a way that would cause an incorrect indication of the measured volume or price.

1.3 Checking Facilities

(i) Audit Printer

The POS console monitors deliveries authorised to be stored in memory. If an error is detected with the audit printer, a message is displayed on the operators display and the ability to store a result in memory and authorise a second delivery will be prevented until the detected error condition is resolved.

(ii) Receipt Printer

The system monitors the condition of the receipt printer and if an error is detected, a visual warning is displayed on the operators screen.

(iii) Customer Display

A visual checking facility is provided to verify display operation for column-mounted display models.

1.4 Verification Provision

The point of sale control system has provision for the application of a verification provision mark.

1.5 Descriptive Markings

The POS console (##) is marked in a clear and permanent manner, in one location, with the following information:

Submittor's name or mark
Serial number or other unique identifier
Pattern approval number	NMI S642

Note: Instruments purporting to comply with this approval and currently marked 'NMI PS642' may be re-marked 'NMI S642' but only by persons authorised by the submittor.

(##) May also be known as the POS controller when used in variant 1

2. Description of Variant 1

approved 26/02/15

The pattern now to provide certain additional facilities for transactions when interfaced to compatible (#) NMI-approved measuring instruments granted with reference to document NMI M7.

2.1 Key Features

- The system provides point of sale arrangements for a Mettler Toledo model VIVA self-indicating non-automatic weighing instrument (approval NMI 6/4C/239) or other compatible (#) NMI-approved measuring instruments.
 - The system receives measurement data from the output interface of the approved measuring instrument and computes prices using a product look up (PLU) facility.
 - The system computes total price for multiple items including non-measured items and is approved for use for transactions direct to the public.
 - Manually entered measurement data shall be indicated as such on a printed transaction record.
 - The POS controllers may be connected in a network to share common PLU data, for totalisation, and to accumulate and retrieve management information.
- (#) 'Compatible' is defined to mean that no additions/changes to the hardware/software specified in this approval are required for satisfactory operation of the system.

2.2 System Description

The Marketstall model EDGEPoS point of sale (POS) system (Figure 6) comprises:

(i) POS Controller

The Marketstall model EDGEPoS POS controller comprises a Partner model PT-6215 or equivalent (*) PC-based device that operates a Microsoft Windows-based operating system running EDGEPoS version 3.x.xx software. The software version number is displayed at the top of the operator screen at all times.

(ii) Electronic Indications

Indications shall satisfy the requirements of document NMI M7, *Pattern Approval Specifications for Point of Sale Systems*.

The Partner model PT-6215 POS controller has an integral touch sensitive display to provide an indication for the operator (Figure 7).

A Partner model CD-7220 computer monitor or equivalent (*) is connected to the controller and provides an indication for the customer (Figure 8).

A Bixolon model BCD-1000 2 line display or equivalent (*) may be connected to the controller and provides as an alternate indication for the customer (Figure 9).

Information additional to that required by document NMI M7, including totalisation details and product images, may also be indicated.

- (*) 'Equivalent' is defined to mean other proprietary equipment of the same or better specifications requiring no changes to the software specified in this approval for satisfactory operation of the system.

(iii) Printing Devices

Transaction records shall satisfy the requirements of document NMI M7, *Pattern Approval Specifications for Point of Sale Systems*.

An Epson model TM88 printer or equivalent (*) is connected to the controller to provide transaction record printing facility. A typical record is shown in Figure 10.

- (*) 'Equivalent' is defined to mean other proprietary equipment of the same or better specifications requiring no changes to the software specified in this approval for satisfactory operation of the system.

3. Description of Variant 2

approved 27/07/17

With the Edgepos software of the Pattern and Variant 1 now operating software version 4.x.xx or 5.x.xx. This software version has no legally relevant changes.

TEST PROCEDURE No S642

The POS system shall be tested in addition to any tests specified in the approval documentation for the measuring instrument/s to which the POS system is connected, as appropriate

The POS system shall be tested in the normal operational mode of the instrument and device, not in 'training mode' or any other management mode.

TESTS

A. For the pattern (fuel POS systems)

Instruments shall be tested in conjunction with any tests specified in the approval documentation for the instruments to which the pattern is connected, as appropriate, and in accordance with the national Instrument Test Procedures.

Points 2-6 are required at commissioning, thereafter they may be conducted at the discretion of the inspecting officer.

1. Check the EDGEPoS software version number.

2. Check that the unit price change for the grade of fuel is implemented to the allocated fuel dispensers when they are available for authorisation.
3. Check that the system identifies, displays and prints the correct data for the corresponding number allocated to the fuel dispenser.
4. Authorise a delivery and check that the delivery details on the fuel dispenser agree with the receipt obtained.
5. Authorise a stored delivery and check that the delivery details of the first delivery to be stored in memory is printed on the audit printer.
6. Remove paper from the audit printer and check that when the printer is unavailable, the warning message is displayed on the POS console. Ensure that the ability to authorise a stored delivery is not possible.

B. For variant 1 (weighing POS systems)

The POS system shall be tested in addition to any tests specified in the approval documentation for the measuring instrument/s to which the POS system is connected, as appropriate

The POS system shall be tested in the normal operational mode of the instrument and device, not in 'training mode' or any other management mode.

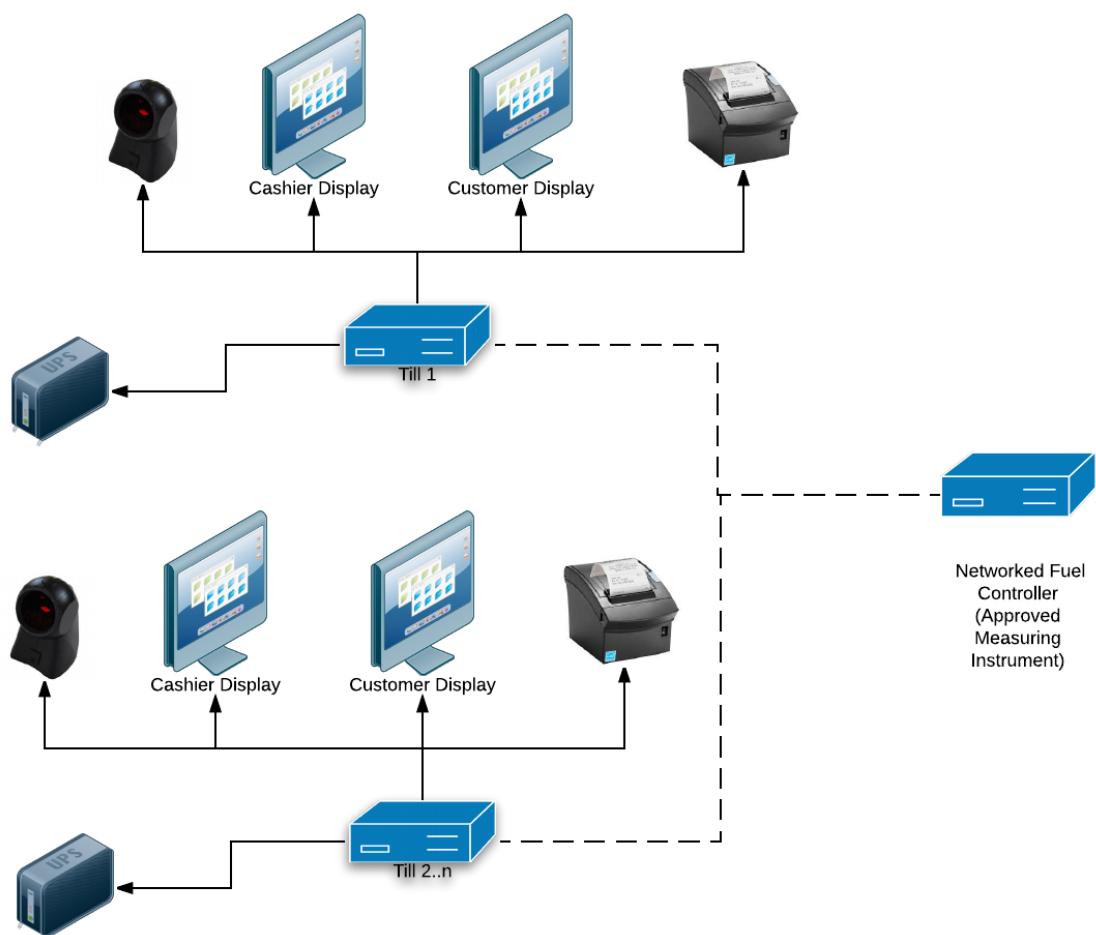
Maximum Permissible Error

The maximum permissible error for price computation is ± 0.5 cent.

TESTS

1. Check the software version number/s.
2. Check that the POS system faithfully reproduces the measurement data in the same units and scale interval as the connected approved measuring instrument, e.g. test by using a PLU without a stored tare.
3. Check that the system performs correct price computation, and computes and indicates a correct unrounded subtotal. For cash payment methods, check that any rounding calculation is correct.
4. Manually enter some pre-determined measurement data and ensure that the printed transaction record clearly indicates the transaction as such.
5. For network systems check to ensure that the measurement data printed on the transaction record is correctly reproduced.
6. Ensure that electronic indications and printed information are in accordance with document NMI M7.

FIGURE S642 – 1



Marketstall model EDGEPoS point of sale control system for Fuel Dispensers for Motor Vehicles (Pattern)

FIGURE S642 – 2

The screenshot shows the NMI S642 operator display. At the top, there's a status bar with 'Till 30 - ver4.1.569'. Below it, a menu bar includes 'Cash Screen', 'Admin', 'Fuel', and 'Cash Control'. A toolbar with icons for 'Cancel Sale', 'Void Item', 'Discount', 'Pay Point', 'Suspend Sale', 'Print Last', 'PLU GROUPS', and 'Cash Out' is visible. The main display area shows a 'Tender' of \$10.38. Below this, a table lists items: 7.99 L UNLEADED at \$1.300/L for a total of \$10.38. To the right is a numeric keypad and buttons for 'GROCERY N/VAT', 'FRUIT & VEG', 'Mushrooms', 'Caramel Square', 'Demi Baguette', 'REG HOT DRINK - TIM HORTONS', and 'LARGE HOT DRINK - TIM HORTONS'. At the bottom, a 'SALE' banner and a grid of 16 fuel pump buttons (01-16) are shown, with a 'Pump All Sto' button on the right. The bottom status bar displays 'BGP Print After: BA-T500 Trans No: 73919 Date Time: 27/04/2017 15:18:40 Employee Name: Marketstall Support Messages 111108'.

Typical Operator Display (Pattern)

FIGURE S642 – 3

The screenshot shows the NMI S642 customer display. It displays a transaction for 'P1 UNLEADED' with a quantity of 12.69L at a unit price of \$1.300/L, resulting in a total of \$16.49. Below this, a table summarizes the transaction: 12.69 L UNLEADED at \$1.300 /L for a total of \$16.49.

Qty	Description	Unit Price	Total
12.69 L	UNLEADED	\$1.300 /L	\$16.49

SUB-TOTAL \$16.49

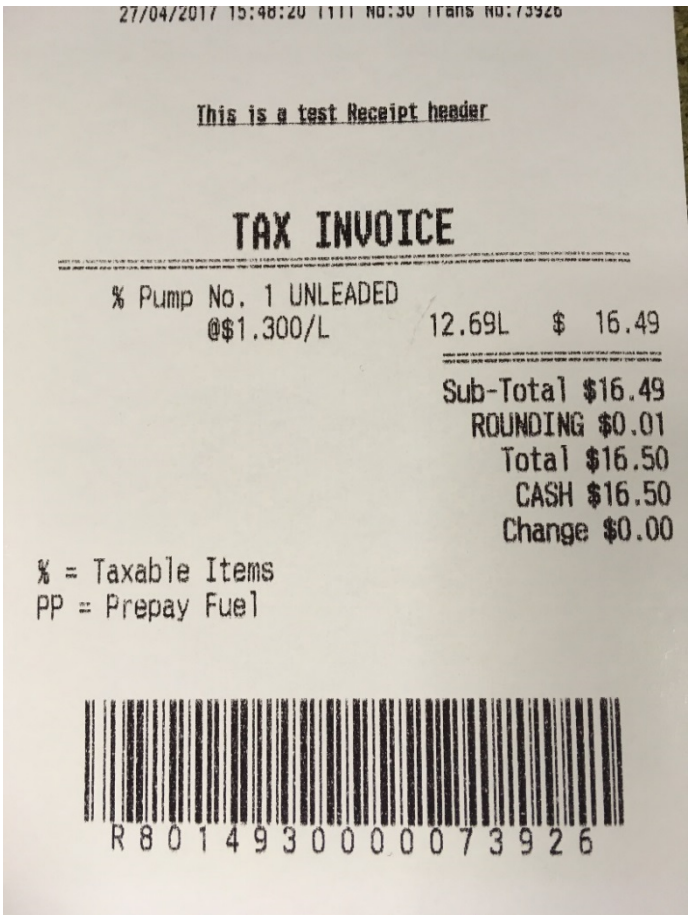
Typical Customer Display (Pattern)

FIGURE S642 – 4



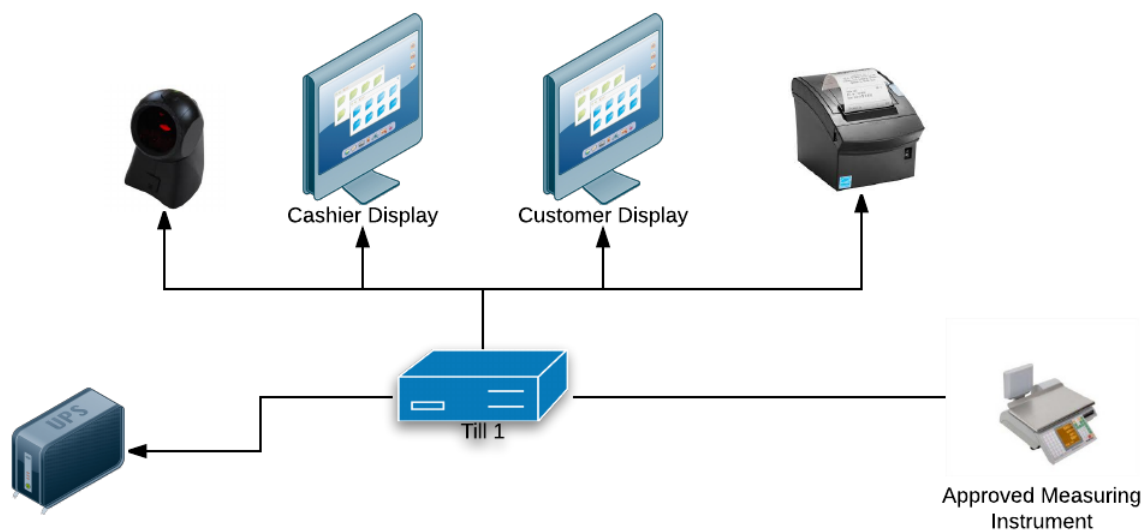
Alternate model Customer Display (Pattern)

FIGURE S642 – 5



A typical receipt (Pattern)

FIGURE S642 – 6



Marketstall model EDGEPOS Point of Sale (POS) System for non-automatic weighing instruments (Variant 1)

FIGURE S642 – 7



Typical Operator Display (Variant 1)

FIGURE S642 – 8

RED SALAD O 1.122kg @ \$0.90/kg \$1.01			
Qty	Description	Unit Price	Total
1.122 Kg	RED SALAD ONION	\$0.90 /Kg	\$1.01
1.122 Kg	MUSHROOMS	\$3.29 /Kg	\$3.69
SUB-TOTAL \$4.70			

Typical Customer Display (Variant 1)

FIGURE S642 – 9



Alternate model Customer Display (Variant 1)

FIGURE S642 – 10

028 38 868070 Shop ABN:719 1904 28 FUEL ABN:747474
Clerk Name:Marketstall Support
27/04/2017 15:08:47 Till No:30 Trans No:73918


This is a test Receipt header

TAX INVOICE

MUSHROOMS
@\$3.29/kg 1.122kg N \$ 3.69
RED SALAD ONION
@\$0.90/kg 1.122kg N \$ 1.01

Total \$4.70
CASH \$4.70
Change \$0.00

% = Taxable Items



A Typical Receipt (Variant 1)

~ End of Document ~