



Bradfield Road, West Lindfield NSW 2070

## Supplementary Certificate of Approval

### NMI S608

Issued by the Chief Metrologist under Regulation 60  
of the  
National Measurement Regulations 1999

This is to certify that an approval for use for trade has been granted in respect of the instruments herein described.

iWEIGH Model WBS Point of Sale (POS) System

submitted by iWEIGH Solutions Pty Ltd  
40-44 Bowerbird Close  
Greenbank QLD 4124

**NOTE:** This Certificate relates to the suitability of the pattern of the instrument for use for trade only in respect of its metrological characteristics. This Certificate does not constitute or imply any guarantee of compliance by the manufacturer or any other person with any requirements regarding safety.

This approval has been granted with reference to document NMI M7, *Pattern Approval Specifications for Point of Sale Systems*, dated June 2012.

This approval becomes subject to review on 1/01/18, and then every 5 years thereafter.

#### DOCUMENT HISTORY

Rev	Reason/Details	Date
0	Pattern & variant 1 provisionally approved – interim certificate issued	4/12/12
1	Pattern & variant 1 amended (validity date) – interim certificate issued	28/02/13
2	Pattern & variant 1 amended (validity date) – interim certificate issued	28/08/13
3	Pattern & variant 1 approved – certificate issued	12/05/14

## CONDITIONS OF APPROVAL

### General

Instruments purporting to comply with this approval shall be marked with pattern approval number 'NMI S608' and only by persons authorised by the submitter.

Instruments purporting to comply with this approval and currently marked 'NMI PS608' may be re-marked 'NMI S608' but only by persons authorised by the submitter.

It is the submitter's responsibility to ensure that all instruments marked with this approval number are constructed as described in the documentation lodged with the National Measurement Institute (NMI) and with the relevant Certificate of Approval and Technical Schedule. Failure to comply with this Condition may attract penalties under Section 19B of the National Measurement Act and may result in cancellation or withdrawal of the approval, in accordance with document NMI P 106.

Auxiliary devices used with this instrument shall comply with the requirements of General Supplementary Certificate No S1/0B.

### Special Conditions of Approval: (weighbridges)

The pattern has not been assessed for compliance with requirements which are outside the scope of document NMI M7, including those features which control the automation of weighbridge operation or ticket formats for public weighbridges.

This Certificate does not constitute or imply approval for these functions. Details of these requirements can be found on the NMI website.

Signed by a person authorised by the Chief Metrologist to exercise their powers under Regulation 60 of the *National Measurement Regulations 1999*.



Dr A Rawlinson

## TECHNICAL SCHEDULE No S608

### 1. Description of Pattern **provisionally approved on 4/12/12** **approved 12/05/14**

An iWEIGH model WBS system to provide certain additional facilities for transactions when interfaced to compatible (#) NMI-approved point of sale systems granted with reference to document NMI M7.

#### 1.1 Key Features

- The system provides point of sale arrangements when connected to NMI-approved measuring instruments fitted with a Ranger model 5000 digital indicator (approval NMI S363) or other compatible (#) NMI-approved measuring instruments.
  - The system receives measurement data from the output interface of the approved measuring instrument and computes prices using a product look up (PLU) facility.
  - The system computes total price for multiple items including non-measured items and is approved for use for transactions direct to the public.  
Manually entered measurement data shall be indicated as such on a printed transaction record.
  - The system is able to apply a preset tare value up to the maximum capacity of the approved measuring instrument. Preset tare values may be keyboard-entered or stored (e.g. within a PLU facility).
  - The POS controllers may be connected in a network to share common PLU data, for totalisation, and to accumulate and retrieve management information.
- (#) 'Compatible' is defined to mean that no additions/changes to the hardware/software specified in this approval are required for satisfactory operation of the system.

#### 1.2 System Description

The iWEIGH model WBS point of sale (POS) system (Figure 1) comprises:

##### (i) POS Controller

The iWEIGH model WBS POS controller comprises a PC-based or PDA device that operates a Microsoft Windows-based operating system running iWEIGH version 4.x.x.x software. The software version number is displayed on the title bar of the main ticketing window as well as the login screen.

##### (ii) Electronic Indications

Indications shall satisfy the requirements of document NMI M7, *Pattern Approval Specifications for Point of Sale Systems*.

A 3M model Micro-Touch touch sensitive computer monitor or equivalent (\*) is connected to the POS controller to provide an indication for the operator (Figure 2).

Note: There is no customer display fitted to the POS system.

Information additional to that required by document NMI M7, including totalisation details and product images, may also be indicated.

### **(iii) Printing Devices**

Transaction records shall satisfy the requirements of document NMI M7, *Pattern Approval Specifications for Point of Sale Systems*.

A Star model TSP700 printer or equivalent (\*) is connected to the controller to provide transaction record printing facility. A typical record is shown in Figure 3.

Note: Tickets have NOT been assessed for compliance with the requirements for Weighbridge Measurement Tickets as given in relevant Licensing Directives of the trade measurement section of NMI as published on the NMI website.

- (\*) 'Equivalent' is defined to mean other proprietary equipment of the same or better specifications requiring no changes to the software specified in this approval for satisfactory operation of the system.

### **(iv) Multiple Instruments Facility**

The iWEIGH model WBS POS system may be connected to up to eight approved measuring instruments. (For example an eight deck weighbridge system). The POS system is configured to display which measuring instrument is connected.

The measuring instrument to be used is predefined by the onsite technician and will automatically be predetermined prior to the operator logging into the iWEIGH WBS application.

Note: In the case of this feature, each instrument/combination shall be clearly identified to correspond to the appropriate measuring instrument display shown on the POS system display. Trade measurement authorities may require additional markings or signs to ensure that these relationships are clear.

### **(v) Truck Weighing Functions**

Providing functions intended specifically for truck weighing applications, including provision for 'truck and product' identification data to be stored in memory.

The truck weighing functions provide for:

- simple vehicle weighing, where the gross weight of a vehicle is determined by a single weighing;
- first/second weighing, where a vehicle is weighed before and after a loading or unloading operation;
- function keys programmed to perform various functions (such as accessing and searching stored vehicle, item, product or client information).

### **(vi) Additional System Facilities**

The system may include additional peripheral devices including but not limited to barcode scanning devices, RFID card readers, Dallas tag iButtons, driver control stations, PLC's, input/output controllers, etc. It may also include other plant/site-specific control systems. The facilities shall not interact with the system in a way that would cause an incorrect indication of the measured quantity or price.

## **1.3 Verification Provision**

Provision is made for the application of a verification mark.

## 1.4 Descriptive Markings

The POS controller is marked in a clear and permanent manner, in one location, with the following information:

Submittor's name or mark	.....
Serial number or other unique identifier	.....
Pattern approval number	NMI S608

## 2. Description of Variant 1 **provisionally approved on 4/12/12** **approved 12/05/14**

The iWEIGH model DCS point of sale POS system is similar to the pattern but has an iWEIGH model DCS driver control station POS controller comprising a PC-based device that operates a Windows operating system with a model IWEIGHDCS-1 driver control station software module and running iWEIGH version 4.x.x.x software. The software version number is displayed on the main form of the application.

The model DCS may have a flat keyboard rather than a touch sensitive screen.

### TEST PROCEDURE No S608

The POS system shall be tested in addition to any tests specified in the approval documentation for the instruments to which the POS system is connected, as appropriate

The POS system shall be tested in the normal operational mode of the instrument and device, not in 'training mode' or any other management mode.

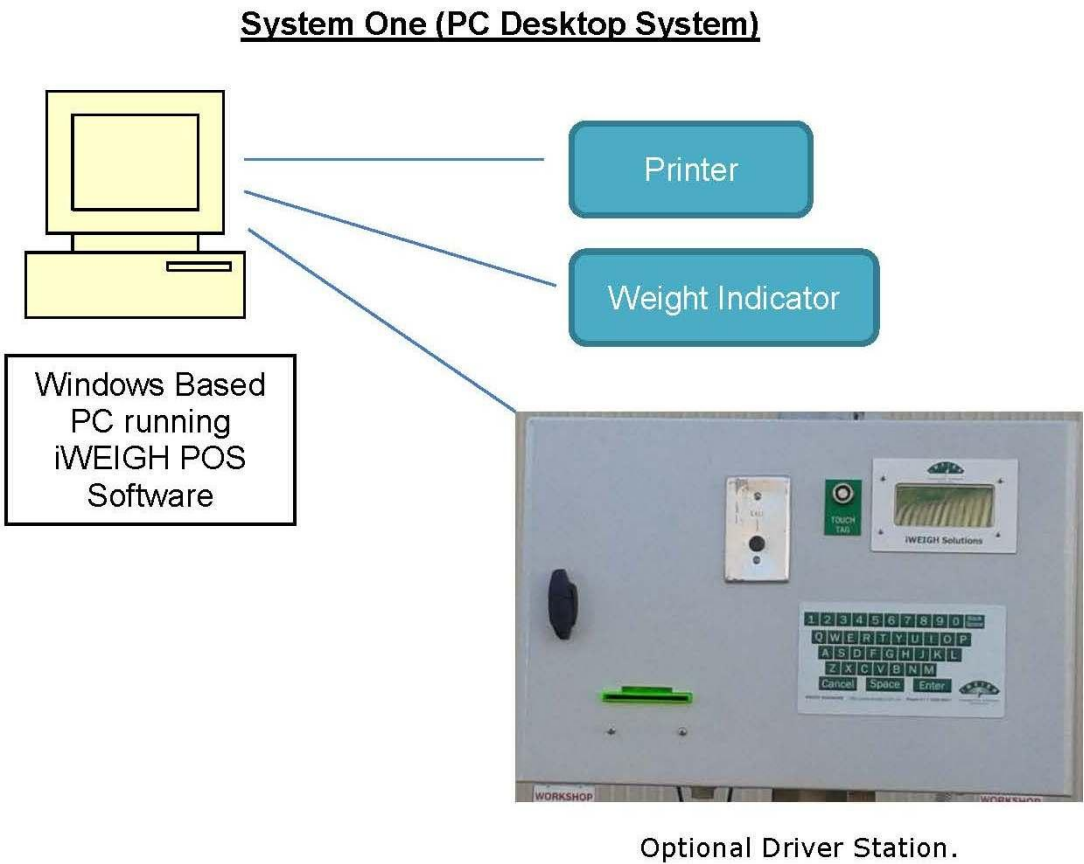
### Maximum Permissible Error

The maximum permissible error for price computation is  $\pm 0.5$  cent.

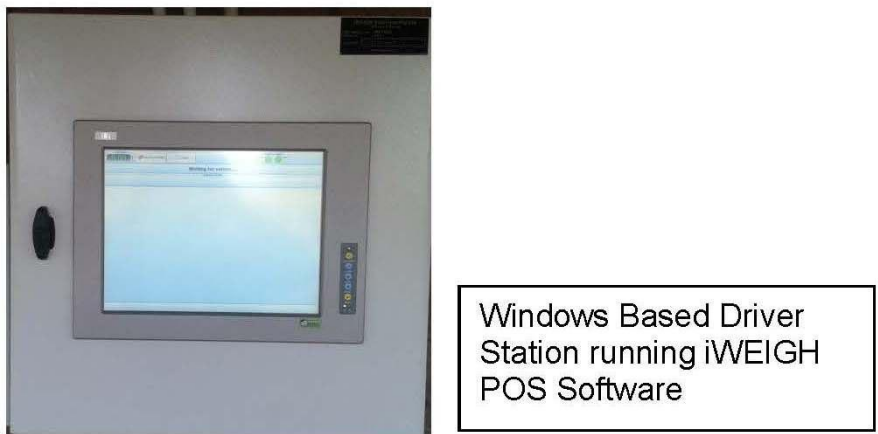
### TESTS

1. Check the software version number/s.
2. Check that the POS system faithfully reproduces the measurement data in the same units and scale interval as the connected approved measuring instrument, e.g. test by using a PLU without a stored tare.
3. Check that the system performs correct price computation, and computes and indicates a correct unrounded subtotal. For cash payment methods, check that any rounding calculation is correct.
4. Perform a measurement with a preset tare applied and confirm that the POS system correctly calculates and indicates a net measurement result.
5. Manually enter some pre-determined measurement data and ensure that the printed transaction record clearly indicates the transaction as such.
6. For network systems check to ensure that the measurement data printed on the transaction record is correctly reproduced.
7. Ensure that electronic indications and printed information are in accordance with document NMI M7.

FIGURE S608 – 1

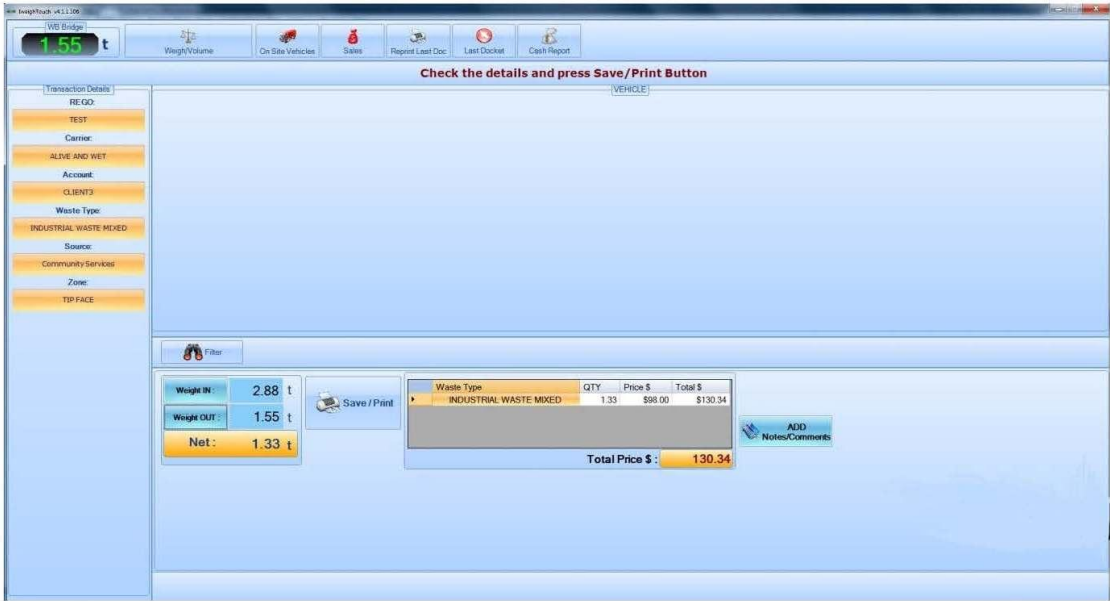


**System Two (Driver Station System with Touch Screen Display)**



iWEIGH Model WBS Point of Sale (POS) System

FIGURE S608 – 2



Typical Operator Screen

FIGURE S608 – 3

DEMO  
Demo  
Ph. 07 4975 0700  
Fax 07 4975 0700  
ABN 27 330 979 106

REPRINT

Docket Number : 001130  
Date/Time : 30-Jul-2013 12:26 PM  
Rego : ABC13  
Contractor: ALCOA  
Account : CLIENT3  
Payment : ACCOUNT  
Order No. :  
Job No. :  
Skip Bin :

Wastes	Qty	Price(\$)	Total(\$)
CONSTRUCTION & DEMOLITION	3.60t	88.00/t	316.80

Gross Wt: 20.06t  
Tare Wt: 16.46t  
Net Weight: 3.60t

Fee : \$ 288.00  
GST : \$ 28.80  
Cash Round. : \$ 0.00  
Total : \$ 316.80

Drivers Signature .....

Change Given : \$

A Typical Receipt