



Bradfield Road, West Lindfield NSW 2070

## Supplementary Certificate of Approval

### NMI S603

Issued by the Chief Metrologist under Regulation 60  
of the  
National Measurement Regulations 1999

This is to certify that an approval for use for trade has been granted in respect of the instruments herein described.

Retail Realm Model RR RMS Touch Point of Sale (POS) System

submitted by     Retail Realm Distribution Pty Ltd  
                         c/o Intuitive Accountants & Associates Pty Ltd  
                         Suite 901, Level 9, 6-8 Underwood Street  
                         Sydney     NSW     2000

**NOTE:** This Certificate relates to the suitability of the pattern of the instrument for use for trade only in respect of its metrological characteristics. This Certificate does not constitute or imply any guarantee of compliance by the manufacturer or any other person with any requirements regarding safety.

This approval has been granted with reference to document NMI M7, *Pattern Approval Specifications for Point of Sale Systems*, dated June 2012.

This approval becomes subject to review on 1/11/18, and then every 5 years thereafter.

#### DOCUMENT HISTORY

Rev	Reason/Details	Date
0	Pattern provisionally approved – interim certificate issued	19/10/12
1	Pattern amended (validity date) – interim certificate issued	10/12/12
2	Pattern amended (submitter details & validity date) – interim certificate issued	19/04/13
3	Pattern amended (validity date) – interim certificate issued	19/10/13
4	Pattern amended (validity date) – interim certificate issued	15/07/14
5	Pattern approved – certificate issued	30/07/14

## CONDITIONS OF APPROVAL

### General

Instruments purporting to comply with this approval shall be marked with pattern approval number 'NMI S603' and only by persons authorised by the submitter.

Instruments purporting to comply with this approval and currently marked 'NMI PS603' may be re-marked 'NMI S603' but only by persons authorised by the submitter.

It is the submitter's responsibility to ensure that all instruments marked with this approval number are constructed as described in the documentation lodged with the National Measurement Institute (NMI) and with the relevant Certificate of Approval and Technical Schedule. Failure to comply with this Condition may attract penalties under Section 19B of the National Measurement Act and may result in cancellation or withdrawal of the approval, in accordance with document NMI P 106.

### Special

Certain aspects of this instrument (in particular transaction record printing formats) are able to be configured by the user. Whilst NMI believes that acceptable formats can be achieved for typical basic sales modes, it is also possible for the instrument to be configured to produce unacceptable formats, and use of some formats may be inappropriate for different sales modes. It is the responsibility of the user to ensure that acceptable and appropriate formats are used in any particular situation.

Signed by a person authorised by the Chief Metrologist to exercise their powers under Regulation 60 of the *National Measurement Regulations 1999*.



Dr A Rawlinson

TECHNICAL SCHEDULE No S603

**1. Description of Pattern** **provisionally approved on 19/10/12**  
**approved on 30/07/14**

A Retail Realm model RR RMS Touch system to provide certain additional facilities for transactions when interfaced to compatible (#) NMI-approved measuring instruments granted with reference to document NMI M7.

**1.1 Key Features**

- The system provides point of sale arrangements for a Datalogic model Magellan 8405 self-indicating non-automatic weighing instrument (approval NMI 6/4C/252) or other compatible (#) NMI-approved measuring instruments.
  - The system receives measurement data from the output interface of the approved measuring instrument and computes prices using a product look up (PLU) facility.
  - The system computes total price for multiple items including non-measured items and is approved for use for transactions direct to the public.
  - Manually entered measurement data shall be indicated as such on a printed transaction record.
  - The system is able to apply a preset tare value up to the maximum capacity of the approved measuring instrument. Preset tare values may be keyboard-entered or stored (e.g. within a PLU facility).
  - The POS controllers may be connected in a network to share common PLU data, for totalisation, and to accumulate and retrieve management information.
- (#) 'Compatible' is defined to mean that no additions/changes to the hardware/software specified in this approval are required for satisfactory operation of the system.

**1.2 System Description**

The Retail Realm model RR RMS Touch point of sale (POS) system (Figure 1) comprises:

**(i) POS Controller**

The Retail Realm model RR RMS Touch POS controller comprises an Intel PC model G630 PC-based device that operates a Microsoft Windows-based operating system running Microsoft Dynamics Retail Management Software version 2.0.x software and Retail Realm RMS Utilities – Store software version 17.x.x.x. The relevant software version numbers are displayed as follows:

1. Login to the RMS Store Operations POS application
2. Click on the custom button “RR RMS Utilities – Store”



3. Click on “Weights and Measures – Version Control”

## **(ii) Electronic Indications**

Indications shall satisfy the requirements of document NMI M7, *Pattern Approval Specifications for Point of Sale Systems*.

An ELO 1919L LCD *Touchscreen Monitor* touch sensitive computer monitor or equivalent (\*) is connected to the POS controller to provide an indication for the operator (Figure 2).

- (\*) 'Equivalent' is defined to mean other proprietary equipment of the same or better specifications requiring no changes to the software specified in this approval for satisfactory operation of the system.

A Digpos model WD-2030 2 line display or equivalent (\*) may be connected to the controller as an indication for the customer (Figure 1).

## **(iii) Printing Devices**

Transaction records shall satisfy the requirements of document NMI M7, *Pattern Approval Specifications for Point of Sale Systems*.

An Epson model TM-T88V printer or equivalent (\*) is connected to the controller to provide transaction record printing facility. A typical record is shown in Figure 3.

- (\*) 'Equivalent' is defined to mean other proprietary equipment of the same or better specifications requiring no changes to the software specified in this approval for satisfactory operation of the system.

## **(iv) Additional System Facilities**

In addition, the system may include other facilities including point of sale cash drawers, magnetic card and/or barcode reader and electronic funds transfer (EFT), etc. The facilities shall not interact with the system in a way that would cause an incorrect indication of the measured quantity or price.

## **1.3 Verification Provision**

Provision is made for the application of a verification mark.

## **1.4 Descriptive Markings**

The POS controller is marked in a clear and permanent manner, in one location, with the following information:

Submittor's name or mark	.....
Serial number or other unique identifier	.....
Pattern approval number	NMI S603

## TEST PROCEDURE No S603

The POS system shall be tested in addition to any tests specified in the approval documentation for the measuring instrument/s to which the POS system is connected, as appropriate

The POS system shall be tested in the normal operational mode of the instrument and device, not in 'training mode' or any other management mode.

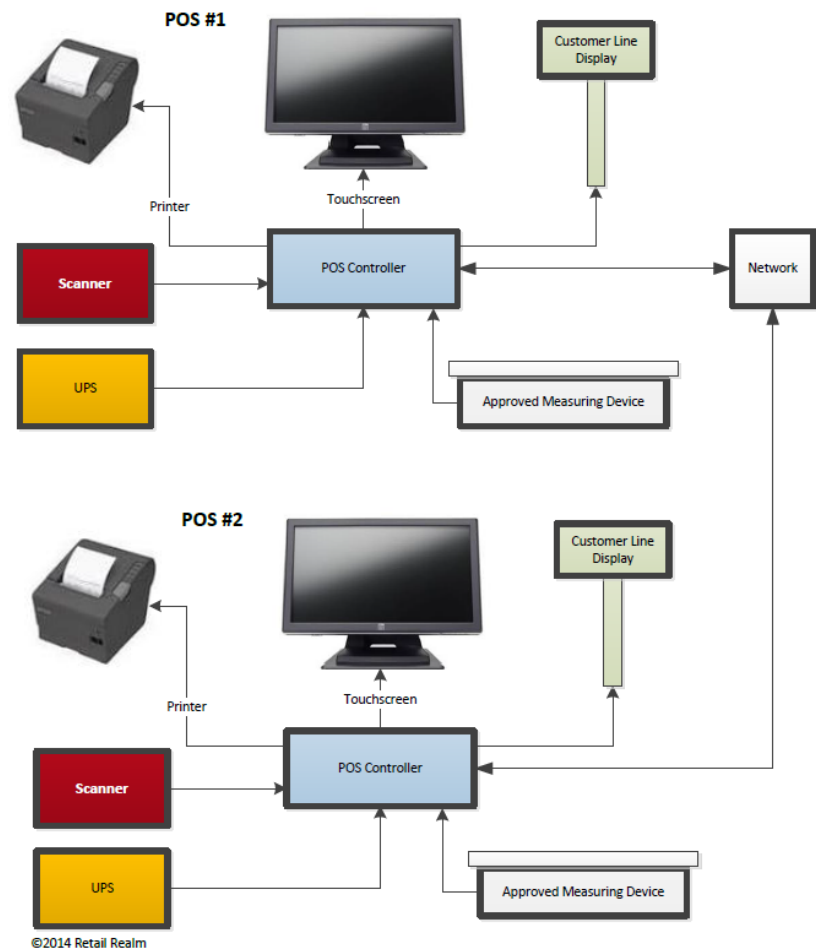
### **Maximum Permissible Error**

The maximum permissible error for price computation is  $\pm 0.5$  cent.

### **TESTS**

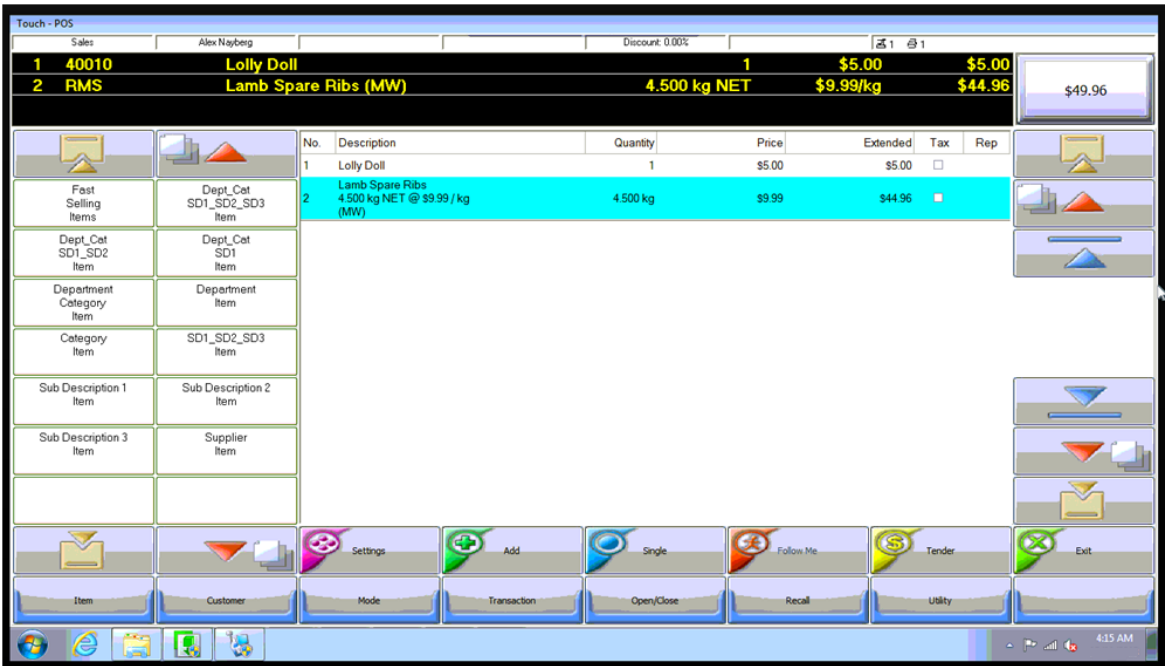
1. Check the software version number/s.
2. Check that the POS system faithfully reproduces the measurement data in the same units and scale interval as the connected approved measuring instrument, e.g. test by using a PLU without a stored tare.
3. Check that the system performs correct price computation, and computes and indicates a correct unrounded subtotal. For cash payment methods, check that any rounding calculation is correct.
4. Perform a measurement with a preset tare applied and confirm that the POS system correctly calculates and indicates a net measurement result.
5. Manually enter some pre-determined measurement data and ensure that the printed transaction record clearly indicates the transaction as such.
6. For network systems check to ensure that the measurement data printed on the transaction record is correctly reproduced.
7. Ensure that electronic indications and printed information are in accordance with document NMI M7.

FIGURE S603 – 1



Retail Realm Model RR RMS Touch Point of Sale (POS) System

FIGURE S603 – 2



Typical Operator Display

FIGURE S603 – 3


Tailspin Toys  
2934 N. Main Street  
Woodinville, WA 83743  
(425) 555-0103

**Sales Receipt**

Transaction #:	1560
Date: 26/07/2013	Time: 08:10:24
Cashier: 1	Register #: 1

Item	Description	Amount
*****	*****	*****
W-0	Lamb Chump Chops	\$19.49
	1.500kg @ \$12.99 / kg	
	Manual Weight	
		*****
	<b>Total</b>	<b>\$19.50</b>
		*****
	Cash Tendered	\$19.50
	Roundoff Cash	-\$0.01
		*****
	Change Due	\$0.00

\* Indicates Taxable Supply

  
 1560

Thank you for shopping  
Tailspin Toys  
We hope you'll come back soon!

A Typical Receipt

~ End of Document ~