



Bradfield Road, West Lindfield NSW 2070

Supplementary Certificate of Approval

NMI S590

Issued by the Chief Metrologist under Regulation 60
of the
National Measurement Regulations 1999

This is to certify that an approval for use for trade has been granted in respect of the instruments herein described.

Retail Edge Model V POS Retail Point of Sale (POS) System

submitted by Retail Edge Systems Pty Ltd
 10 Maranatha Street
 Epping VIC 3076

NOTE: This Certificate relates to the suitability of the pattern of the instrument for use for trade only in respect of its metrological characteristics. This Certificate does not constitute or imply any guarantee of compliance by the manufacturer or any other person with any requirements regarding safety.

This approval has been granted with reference to document NMI M7, *Pattern Approval Specifications for Point of Sale Systems*, dated June 2012.

This approval becomes subject to review on 1/10/17, and then every 5 years thereafter.

DOCUMENT HISTORY

Rev	Reason/Details	Date
0	Pattern provisionally approved – interim certificate issued	14/09/12
1	Pattern amended (validity date) – interim certificate issued	30/11/12
2	Pattern amended (validity date) – interim certificate issued	28/02/13
3	Pattern amended (validity date) – interim certificate issued	4/09/13
4	Pattern approved – certificate issued	15/11/13

CONDITIONS OF APPROVAL

General

Instruments purporting to comply with this approval shall be marked with pattern approval number 'NMI S590' and only by persons authorised by the submittor.

Instruments purporting to comply with this approval and currently marked 'NMI PS590' may be re-marked 'NMI S590' but only by persons authorised by the submittor.

It is the submittor's responsibility to ensure that all instruments marked with this approval number are constructed as described in the documentation lodged with the National Measurement Institute (NMI) and with the relevant Certificate of Approval and Technical Schedule. Failure to comply with this Condition may attract penalties under Section 19B of the National Measurement Act and may result in cancellation or withdrawal of the approval, in accordance with document NMI P 106.

Auxiliary devices used with this instrument shall comply with the requirements of General Supplementary Certificate No S1/0B.

Special

Certain aspects of this instrument (in particular transaction record printing formats) are able to be configured by the user. Whilst NMI believes that acceptable formats can be achieved for typical basic sales modes, it is also possible for the instrument to be configured to produce unacceptable formats, and use of some formats may be inappropriate for different sales modes. It is the responsibility of the user to ensure that acceptable and appropriate formats are used in any particular situation.

Signed by a person authorised by the Chief Metrologist to exercise their powers under Regulation 60 of the *National Measurement Regulations 1999*.



Dr A Rawlinson

TECHNICAL SCHEDULE No S590

1. Description of Pattern **provisionally approved on 14/09/12** **approved on 15/11/13**

A Retail Edge model V POS Retail system to provide certain additional facilities for transactions when interfaced to compatible (#) NMI-approved measuring instruments granted with reference to document NMI M7.

1.1 Key Features

- The system provides point of sale arrangements for a CAS model PDII self-indicating non-automatic weighing instrument (approval NMI 6/4C/237) or other compatible (#) NMI-approved measuring instruments.
 - The system receives measurement data from the output interface of the approved measuring instrument and computes prices using a product look up (PLU) facility.
 - The POS controllers may be connected in a network to share common PLU data, for totalisation, and to accumulate and retrieve management information.
- (#) 'Compatible' is defined to mean that no additions/changes to the hardware/software specified in this approval are required for satisfactory operation of the system.

1.2 System Description

The Retail Edge model V POS Retail point of sale (POS) system (Figure 1) comprises:

(i) POS Controller

The Retail Edge model V POS Retail controller is an AdvanPOS model ZL-1531 or equivalent (*) PC-based device that operates a Microsoft Windows operating system running V POS retail software version 4.xx software. The software version number is displayed by selecting 'help' and 'about' menu items from the login screen.

(ii) Electronic Indications

Indications shall satisfy the requirements of document NMI M7, *Pattern Approval Specifications for Point of Sale Systems*.

The AdvanPOS model ZL-1531 controller includes a built-in touch sensitive computer monitor or equivalent (*) to provide an indication for the operator (Figure 2).

A Philips model 160ES1B computer monitor or equivalent (*) is connected to the controller and provides an indication for the customer (Figure 3).

Information additional to that required by document NMI M7, including totalisation details and product images, may also be indicated.

- (*) 'Equivalent' is defined to mean other proprietary equipment of the same or better specifications requiring no changes to the software specified in this approval for satisfactory operation of the system.

(iii) Printing Devices

Transaction records shall satisfy the requirements of document NMI M7, *Pattern Approval Specifications for Point of Sale Systems*.

A Gravity model BTP-R880NP printer or equivalent (*) is connected to the controller to provide transaction record printing facility. A typical record is shown in Figure 4

- (*) 'Equivalent' is defined to mean other proprietary equipment of the same or better specifications requiring no changes to the software specified in this approval for satisfactory operation of the system.

(iv) Additional System Facilities

In addition, the system may include other facilities including point of sale cash drawers, magnetic card and/or barcode reader and electronic funds transfer (EFT). The facilities shall not interact with the system in a way that would cause an incorrect indication of the measured quantity or price.

1.3 Verification Provision

Provision is made for the application of a verification mark.

1.4 Descriptive Markings

The POS controller is marked in a clear and permanent manner, in one location, with the following information:

Submittor's name or mark
Serial number or other unique identifier
Pattern approval number	NMI S590

TEST PROCEDURE No S590

The POS system shall be tested in addition to any tests specified in the approval documentation for the measuring instrument/s to which the POS system is connected, as appropriate

The POS system shall be tested in the normal operational mode of the instrument and device, not in 'training mode' or any other management mode.

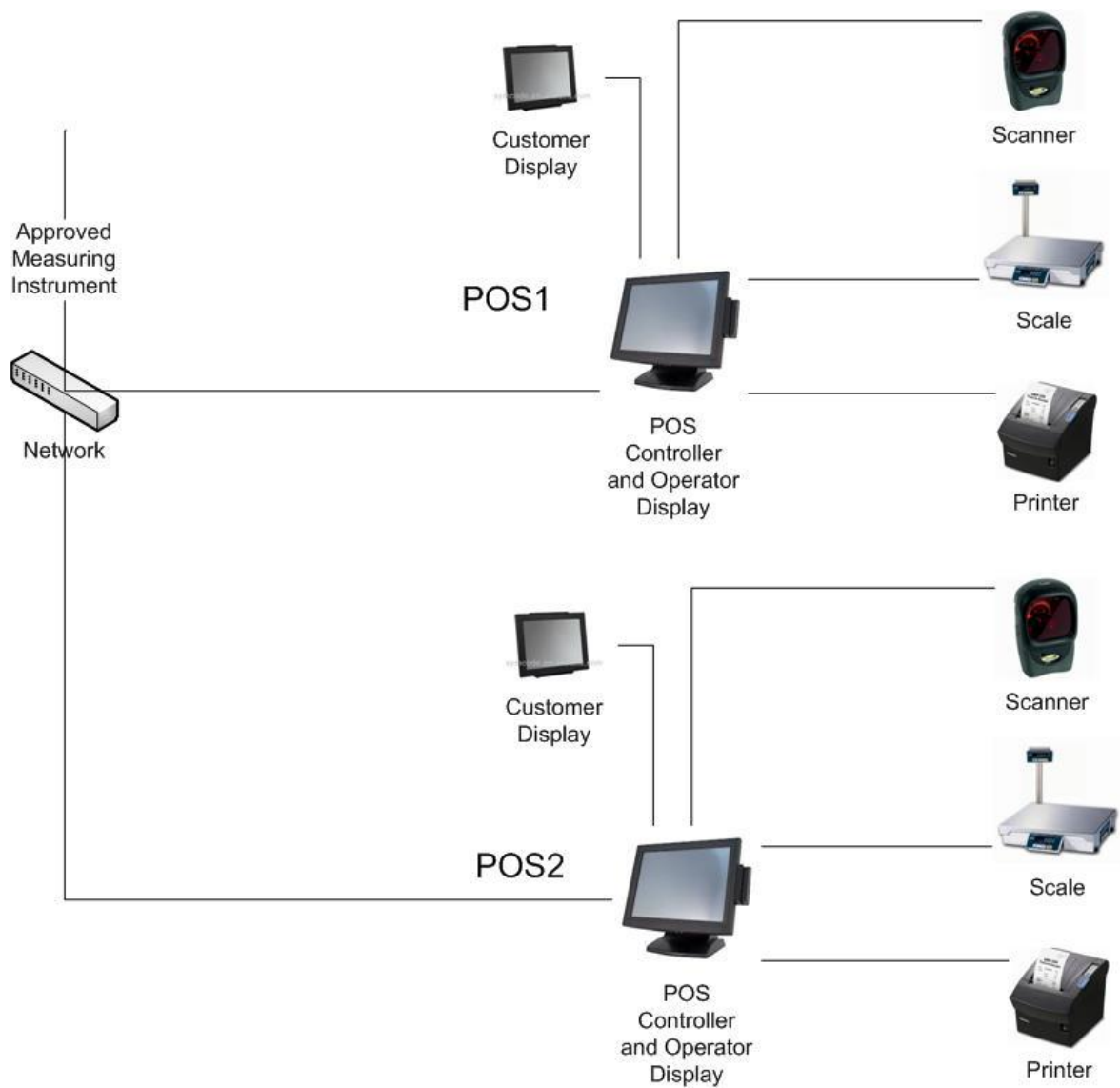
Maximum Permissible Error

The maximum permissible error for price computation is ± 0.5 cent.

TESTS

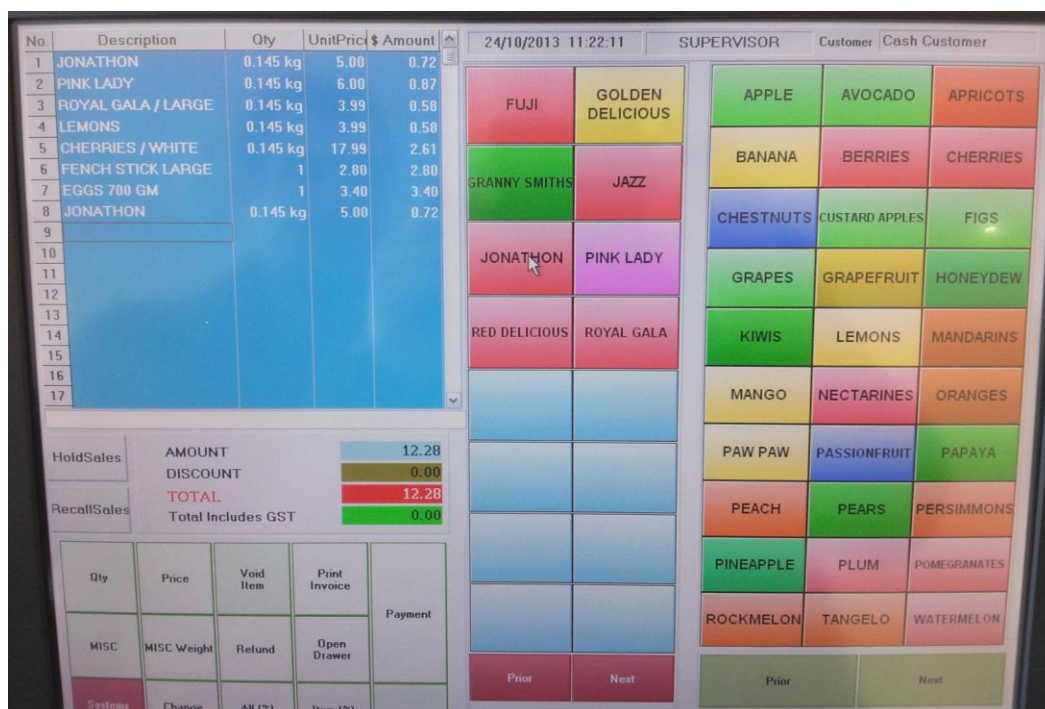
1. Check the software version number/s.
2. Check that the POS system faithfully reproduces the measurement data in the same units and scale interval as the connected approved measuring instrument, e.g. test by using a PLU without a stored tare.
3. Check that the system performs correct price computation, and computes and indicates a correct unrounded subtotal. For cash payment methods, check that any rounding calculation is correct.
4. For network systems check to ensure that the measurement data printed on the transaction record is correctly reproduced.
5. Ensure that electronic indications and printed information are in accordance with document NMI M7.

FIGURE S590 – 1



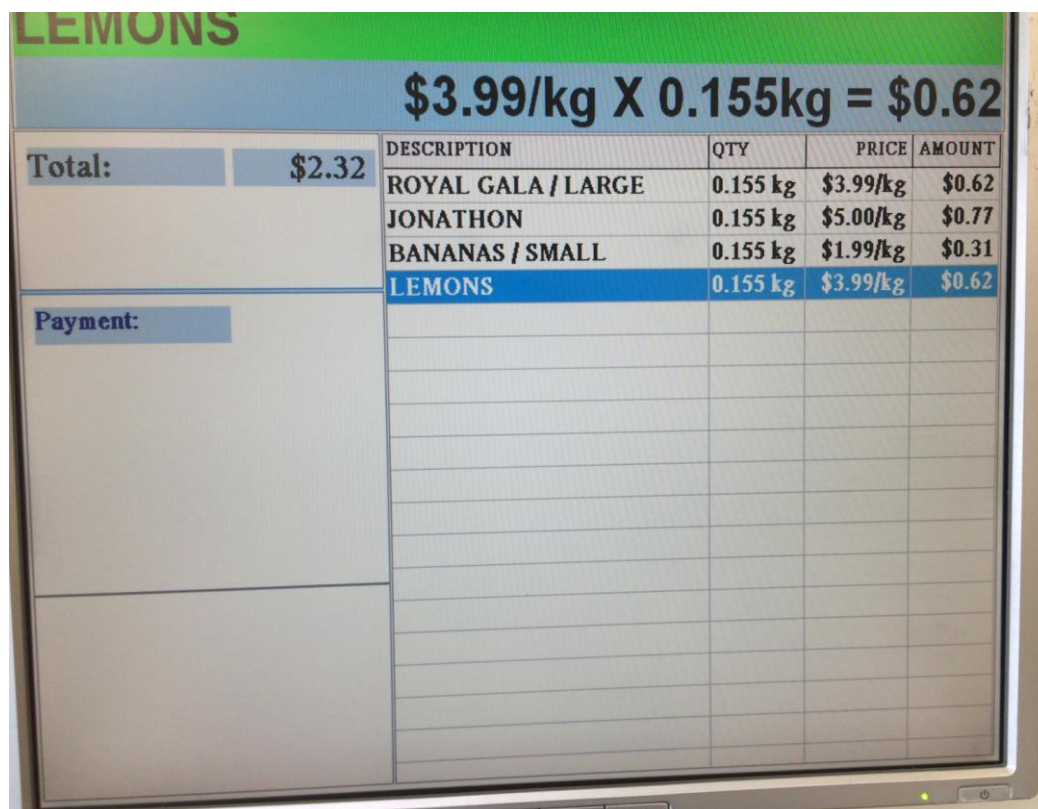
Retail Edge Model V POS Retail Point of Sale (POS) System

FIGURE S590 – 2



Typical Operator Display

FIGURE S590 – 3



Typical Customer Display

FIGURE S590 – 4

Retail Edge Systems Pty Ltd

TAX INVOICE

Date: 17/10/2013 No: P1310170001
Cashier: SUPERVISOR Register: POS

FUJI / LARGE 0.120kg @ \$4.99/kg = \$0.60
JAZZ 0.120kg @ \$4.99/kg = \$0.60
PINK LADY / LARGE 0.120kg @ \$4.99/kg = \$0.60
KIWI GOLD / EACH 1 X \$0.99 = \$0.99
RED GLOBE 0.120kg @ \$2.49/kg = \$0.30
BLUEBERRY 1 X \$9.99 = \$9.99
CHERRIES / AMERICAN 0.265kg @ \$17.99/kg = \$4.77

SUB TOTAL: \$17.85
GST INCLUDED IN TOTAL: \$0.00
CASH: \$17.85
TOTAL: \$17.85
BALANCE: \$0.00

* Indicates Items With GST
Print On: 17/10/2013 17:12:33

Typical Receipt

~ End of Document ~