



Australian Government
Department of Industry,
Innovation and Science

National Measurement Institute

Supplementary Certificate of Approval NMI S442

Issued by the Chief Metrologist under Regulation 60
of the
National Measurement Regulations 1999

This is to certify that an approval for use for trade has been granted in respect of the instruments herein described.

CAS Model WBK-10t Load Cell

submitted by CAS Corporation
19 Ganap-Ri, Gwangjoek-Myeon
Yangju-Si, Gyeonggi-Do
Republic of Korea

NOTE: This Certificate relates to the suitability of the pattern of the instrument for use for trade only in respect of its metrological characteristics. This Certificate does not constitute or imply any guarantee of compliance by the manufacturer or any other person with any requirements regarding safety.

This approval has been granted with reference to document NMI R 60, *Metrological Regulation for Load Cells*, dated July 2004.

This approval becomes subject to review on **1/07/21**, and then every 5 years thereafter.

DOCUMENT HISTORY

Rev	Reason/Details	Date
0	Pattern & variant 1 approved – interim certificate issued	11/06/04
1	Pattern & variant 1 approved – certificate issued	14/01/05
2	Pattern & variant 1 amended (Table 1) – notification of change issued	29/04/05
3	Pattern & variant 1 reviewed – notification of change issued	16/04/10
4	Pattern & variant 1 amended (Table 1), updated & reviewed – variant 2 approved – certificate issued	11/05/16

CONDITIONS OF APPROVAL

General

Instruments purporting to comply with this approval shall be marked with pattern approval number 'NMI (or NSC) S442' and only by persons authorised by the submitter.

Instruments incorporating a component purporting to comply with this approval shall be marked 'NMI (or NSC) S442' in addition to the approval number of the instrument, and only by persons authorised by the submitter.

It is the submitter's responsibility to ensure that all instruments marked with this approval number are constructed as described in the documentation lodged with the National Measurement Institute (NMI) and with the relevant Certificate of Approval and Technical Schedule. Failure to comply with this Condition may attract penalties under Section 19B of the National Measurement Act and may result in cancellation or withdrawal of the approval, in accordance with document NMI P 106.

The values of the performance criteria (maximum number of scale intervals etc.) applicable to an instrument incorporating the pattern approved herein shall be within the limits specified herein and in any approval documentation for the other components.

Signed by a person authorised by the Chief Metrologist to exercise their powers under Regulation 60 of the *National Measurement Regulations 1999*.



Dr A Rawlinson

TECHNICAL SCHEDULE No S442

1. Description of Pattern **approved on 11/06/04**

A CAS model WBK-10t load cell of 10 000 kg maximum capacity (Figure 1 and Table 1) approved for use with up to 3000 verification intervals.

1.1 Method of Mounting

Mounting is to be in accordance with the manufacturer's instructions and as shown in Figure 2.

1.2 Markings

Each load cell is marked with the following:

Manufacturer's mark, or name written in full	CAS Corp Korea
Model number
Serial number
Pattern approval mark	NMI (or NSC) S442
Maximum capacity	<i>E_{max}</i> kg

1.3 Table of Specifications

Specifications for the pattern are given in Table 1.

2. Description of Variant 1 **approved on 11/06/04**

Certain other models and capacities as listed in Table 1.

3. Description of Variant 2 **approved on 11/05/16**

The pattern and variants may have an alternative cable connection as shown in Figure 3.

TABLE 1

Type: CAS WBK Series, in models WBK- # where # is the value listed below:

Model #:		10t	20t	25t	30t	50t
Maximum capacity, <i>E_{max}</i>	kg	10 000	20 000	25 000	30 000	50 000
Accuracy class - Classification		C	C	C	C	C
Maximum number of verification intervals		3000	3000	3000	3000	3000
Minimum value of verification interval, <i>v_{min}</i>	kg	1.67	3.33	4.17	5	8.33
Minimum dead load output return value (DR)	kg	1.67	3.33	4.17	5	8.33
Output rating (nominal)	mV/V	2	2	2	2	2
Input impedance (nominal)	ohm	350	350	350	350	350
Supply voltage (AC or DC)	V	10-15	10-15	10-15	10-15	10-15
Number of leads (plus shield)		4	4	4	4	4
Cable length (± 0.1 m)	m	Various lengths between 0.5 and 25 metres (##)				

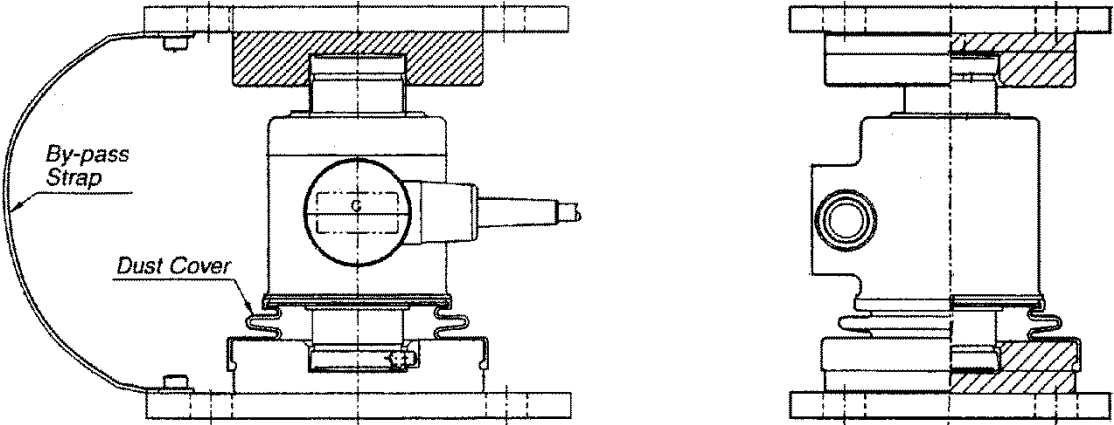
(##) The cable length must not be altered after manufacture.

FIGURE S442 – 1



CAS Model WBK-10t Load Cell (Pattern)

FIGURE S442 – 2



Mounting Method (Pattern & variants)

FIGURE S442 – 3



Alternative Cable Connection (Variant 2)

~ End of Document ~