



Australian Government

National Measurement
Institute

Bradfield Road, West Lindfield NSW 2070

Notification of Change

Supplementary Certificate of Approval No S361

Change No 2

Issued by the Chief Metrologist under Regulation 60
of the
National Measurement Regulations 1999

The following changes are made to the approval documentation for the
Mettler Toledo Model 0745 Load Cell

submitted by Mettler Toledo Limited
 Unit 3, 220 Turner Street
 Port Melbourne VIC 3207.

In Supplementary Certificate of Approval No S361 dated 28 September 1999;

1. The Condition of Approval referring to the review of the approval should be amended to read:
 “This approval becomes subject to review on 1 May **2015**, and then every 5 years thereafter.”
 Note: The review date was previously amended by Notification of Change No 1 dated 18 January 2006.
2. The FILING ADVICE should be amended by adding the following:
 “Notification of Change No 2 dated 8 April 2011”

Signed by a person authorised by the Chief Metrologist
to exercise his powers under Regulation 60 of the
National Measurement Regulations 1999.

A handwritten signature in black ink, consisting of stylized cursive letters, likely representing the Chief Metrologist.



National Standards Commission

Supplementary Certificate of Approval

No S361

Issued under Regulation 9
of the
National Measurement (Patterns of Measuring Instruments) Regulations

This is to certify that an approval for use for trade has been granted in respect of the

Mettler Toledo Model 0745 Load Cell

submitted by Mettler Toledo Limited
525 Graham Street
Port Melbourne VIC 3207.



NOTE: This Certificate relates to the suitability of the pattern of the instrument for use for trade only in respect of its metrological characteristics. This Certificate does not constitute or imply any guarantee of compliance by the manufacturer or any other person with any requirements regarding safety.

CONDITIONS OF APPROVAL

This approval becomes subject to review on 1 May **2004**, and then every 5 years thereafter.

Instruments purporting to comply with this approval shall be marked NSC No S361 and only by persons authorised by the submittor.



Instruments incorporating a component purporting to comply with this approval shall be marked NSC No S361 in addition to the approval number of the instrument.

It is the submitter's responsibility to ensure that all instruments marked with this approval number are constructed as described in the documentation lodged with the Commission and with the relevant Certificate of Approval and Technical Schedule. Failure to comply with this Condition may attract penalties under Section 19B of the National Measurement Act and may result in cancellation or withdrawal of the approval, in accordance with the Commission's Document 106.

The Commission reserves the right to examine any instrument or component of an instrument purporting to comply with this approval.

DESCRIPTIVE ADVICE

Pattern: approved 21 April 1999

- A Mettler Toledo model 0745 load cell of 4500 kg maximum capacity.

Variant: approved 21 April 1999

1. Certain other capacities as listed in Table 1.

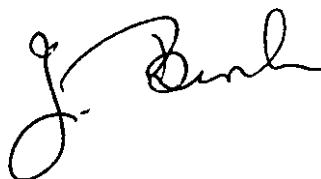
Technical Schedule No S361 describes the pattern and variant 1.

FILING ADVICE

The documentation for this approval comprises:

Supplementary Certificate of Approval No S361 dated 28 September 1999
Technical Schedule No S361 dated 28 September 1999 (incl. Table 1)
Figures 1 to 3 dated 28 September 1999

Signed and sealed by a person authorised under Regulation 9 of the National Measurement (Patterns of Measuring Instruments) Regulations to exercise the powers and functions of the Commission under this Regulation.



TECHNICAL SCHEDULE No S361

Pattern: Mettler Toledo Model 0745 Load Cell.

Submitter: Mettler Toledo Limited
525 Graham Street
Port Melbourne VIC 3207.



1. Description of Pattern

A Mettler Toledo model 0745 load cell of 4500 kg maximum capacity (Figure 1 and Table 1) approved for use with up to 3 000 verification scale intervals.

1.1 Method of Mounting

Mounting is to be in accordance with the manufacturer's instructions and as shown in Figures 2 and 3.

1.2 Markings

Each load cell is marked with the following:

Manufacturer's mark, or name written in full	Mettler-Toledo Inc.
Model number	0745
Serial number
Pattern approval mark	NSC No S361
Maximum capacity E_{max} kg

1.3 Table of Specifications

Specifications are given in Table 1.

2. Description of Variant 1

Certain other capacities as listed in Table 1.

Note: The 1100 kg capacity version has a different profile to the cell shown in Figure 1, in that it has a small step at the bottom at the nose-end; see the diagram of Figure 2 and the photograph of Figure 3.

TABLE 1

Type: Mettler Toledo Model 0745

Maximum capacity	kg	220	550	1100	2200	4500
Accuracy class		C	C	C	C	C
Maximum number of verification scale intervals		3000	3000	3000	3000	3000
Minimum value of verification scale interval	kg	0.023	0.056	0.113	0.226	0.44
Minimum dead load output return value (DR)	kg	0.024	0.059	0.12	0.24	0.47
Output rating (nominal)	mV/V	1.94	1.94	1.94	1.94	1.94
Input impedance (nominal)	Ω	385	385	385	385	385
Supply voltage (AC or DC)	V	5 - 15	5 - 15	5 - 15	5 - 15	5 - 15
Number of leads (plus shield		4	4	4	4	4
Cable length (± 0.1 m)		Manufactured in various lengths between 1.5 and 22 metres; the cable length must not be altered after manufacture.				

Note: The 1100 kg capacity version has a different profile to the cell shown in Figure 1, in that it has a small step at the bottom at the nose-end; see the diagram of Figure 2 and the photograph of Figure 3.



Australian Government
**National Measurement
Institute**

12 Lyonpark Road, North Ryde NSW 2113

Notification of Change
Supplementary Certificate of Approval No S361
Change No 1

Issued by the Chief Metrologist under Regulation 60
of the
National Measurement Regulations 1999

The following changes are made to the approval documentation for the
Mettler Toledo Model 0745 Load Cell

submitted by Mettler Toledo Pty Ltd
525 Graham Street
Port Melbourne VIC 3207.

- A. In Supplementary Certificate of Approval No S361 dated 28 September 1999;
- (i) the Condition of Approval referring to the review of the approval should be amended to read:
"This approval becomes subject to review on 1 May 2010, and then every 5 years thereafter."
 - (ii) the FILING ADVICE should be amended by adding the following:
"Notification of Change No 1 dated 18 January 2006"
- B. In Supplementary Certificate of Approval No S361 and its Technical Schedule both dated 28 September 1999;
- (i) the references to the address of the submitter should be amended to read:
" **220 Turner Street**
Port Melbourne VIC 3207."

Signed by a person authorised by the Chief Metrologist
to exercise his powers under Regulation 60 of the
National Measurement Regulations 1999.

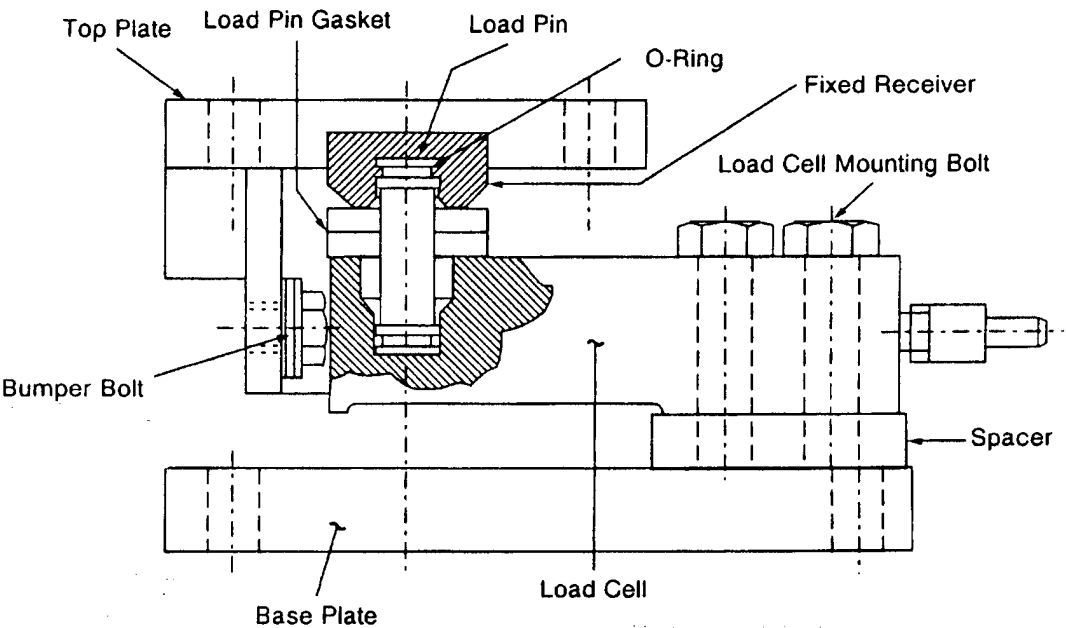
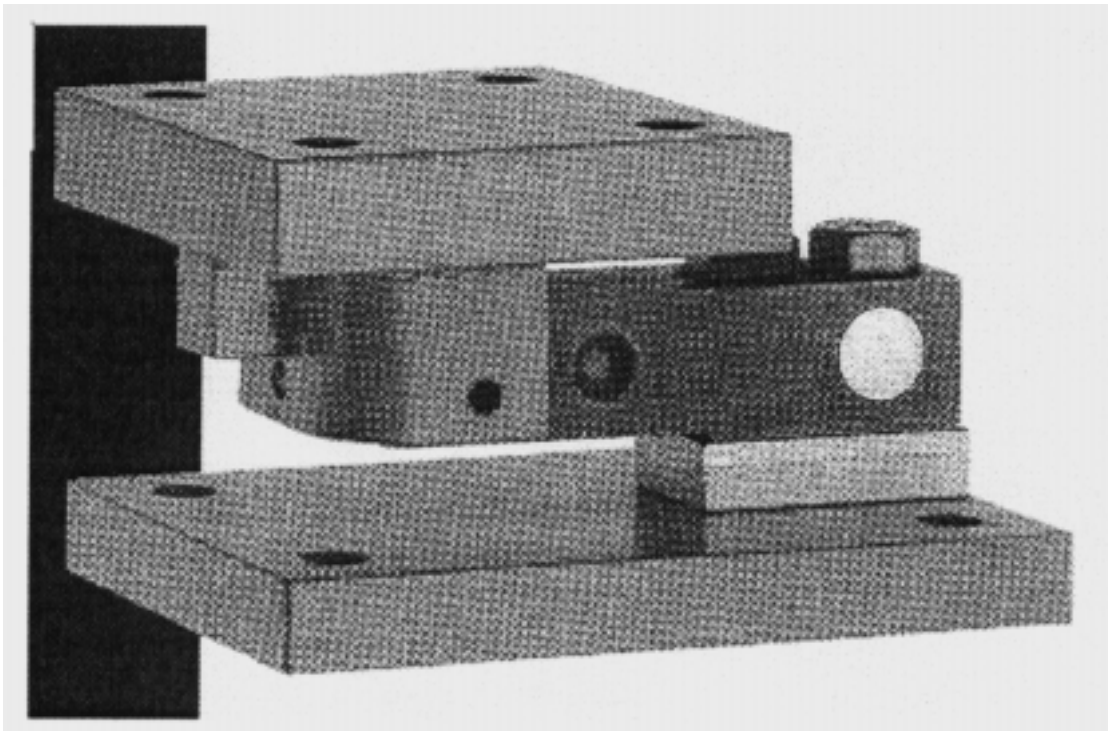
A handwritten signature in black ink, appearing to be 'J. K. T.', is located at the bottom right of the page.

FIGURE S361 - 1



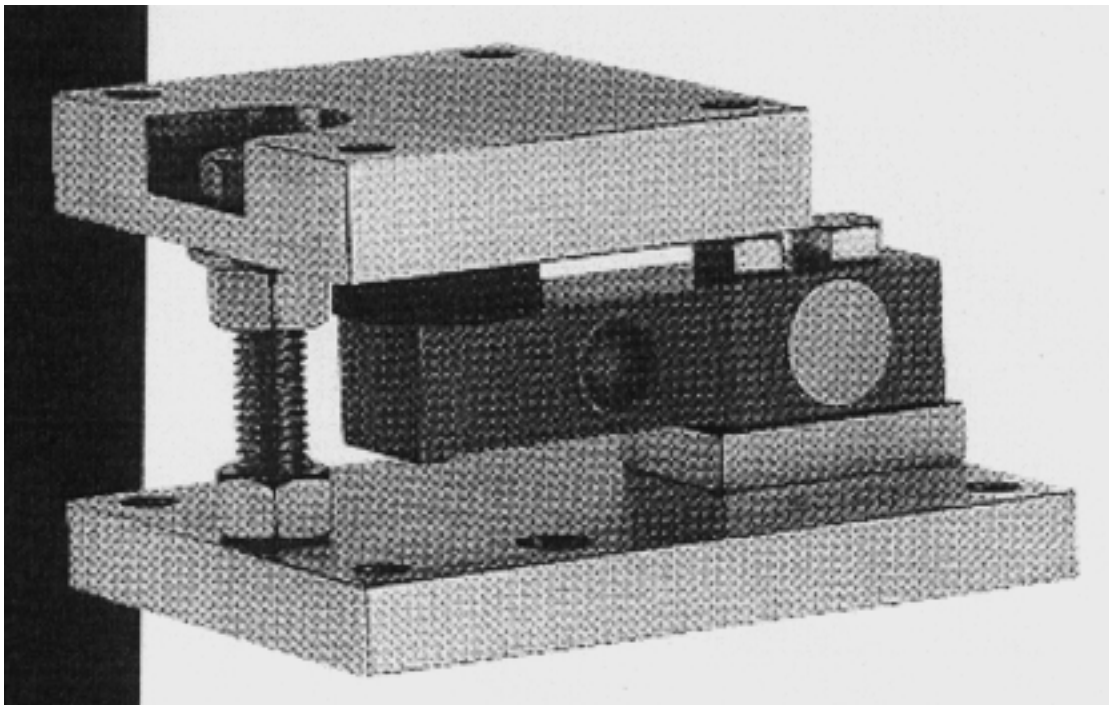
Mettler Toledo Model 0745 Load Cell

FIGURE S361 - 2

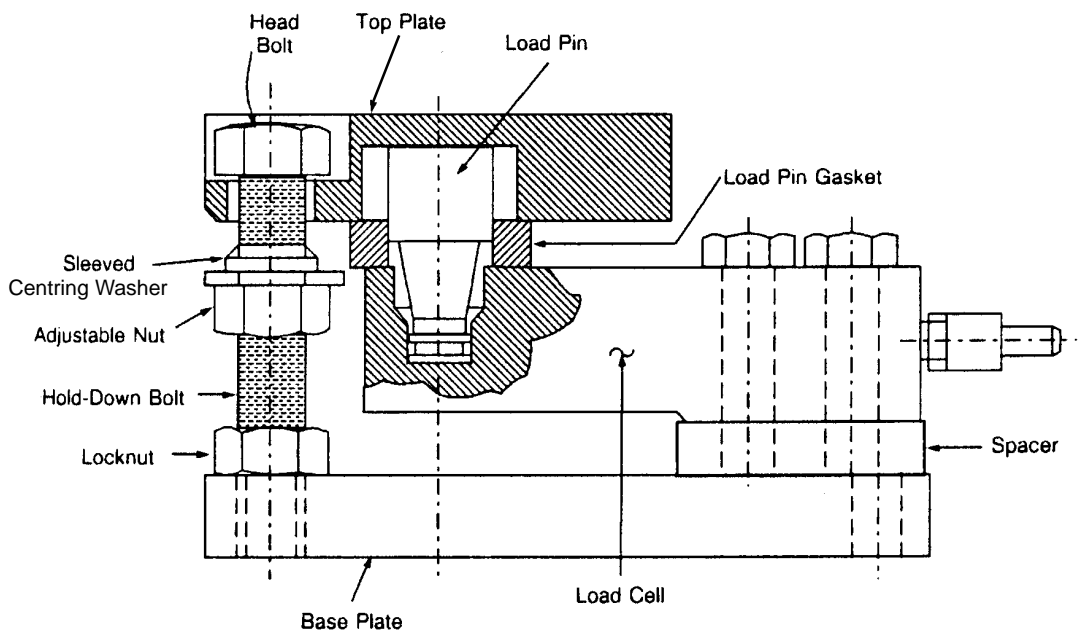


Note: The cell shown in the diagram above is the 1100 kg capacity version indicated by the small step at the bottom at the nose-end.

FIGURE S361 - 3



Note: The cell shown in the photograph above is the 1100 kg capacity version indicated by the small step at the bottom at the nose-end.



Alternative Mounting Method