



**Australian Government**  

---

**National Measurement  
Institute**

12 Lyonpark Road, North Ryde NSW 2113

**Cancellation**  
**Supplementary Certificate of**  
**Approval No S290**

Issued by the Chief Metrologist under Regulation 60  
of the  
National Measurement Regulations 1999

This is to certify that the approval for use for trade granted in respect of the  
Revere Transducers Model BSP-A3-500-30P5 Load Cell  
submitted by Thermo Ramsey Pty Ltd  
(formerly Ramsey Technology)  
now of 11 Box Road  
Taren Point NSW 2229

has been cancelled in respect of new instruments as from 1 June 2005.

Signed by a person authorised by the Chief Metrologist  
to exercise his powers under Regulation 60 of the  
National Measurement Regulations 1999.

A handwritten signature in black ink, appearing to be 'J. G. T.', is located in the bottom right corner of the page.

# National Standards Commission



## Supplementary Certificate of Approval

No S290

Issued under Regulation 9  
of the  
National Measurement (Patterns of Measuring Instruments) Regulations

This is to certify that an approval for use for trade has been granted in respect of the

Revere Transducers Model BSP-A3-500-30P5 Load Cell

submitted by Ramsey Technology  
20-22 Box Road  
Taren Point NSW 2229.

**NOTE:** This Certificate relates to the suitability of the pattern of the instrument for use for trade only in respect of its metrological characteristics. This Certificate does not constitute or imply any guarantee of compliance by the manufacturer or any other person with any requirements regarding safety.

### CONDITIONS OF APPROVAL

This approval is subject to review on or after 1 October 1997.  
This approval expires in respect of new instruments on October 1998.

Instruments purporting to comply with this approval shall be marked NSC No S290 and only by persons authorised by the submitter.

Instruments incorporating a component purporting to comply with this approval shall be marked NSC No S290 in addition to the approval number of the instrument.

The Commission reserves the right to examine any instrument or component of an instrument purporting to comply with this approval.

It is the submittor's responsibility to ensure that all instruments marked with this approval number are constructed as described in the documentation lodged with the Commission and with the relevant Certificate of Approval and Technical Schedule. Failure to comply with this Condition may attract penalties under Section 19B of the National Measurement Act and may result in cancellation or withdrawal of the approval, in accordance with the Commission's Document 106.

The values of the performance criteria (maximum number of scale intervals etc.) applicable to an instrument incorporating the pattern approved herein shall be within the limits specified herein and in any approval documentation for the other components.

#### DESCRIPTIVE ADVICE

**Pattern:** approved 21 September 1992

- . A Revere Transducers model BSP-A3-500-30P5 load cell of 227 kg capacity.

**Variant:** approved 21 September 1992

1. Model BSP-A3-250-30P5 of 120 kg capacity.

Technical Schedule No S290 describes the pattern and variant 1.

**Variant:** approved 24 December 1993

2. Model BSP-A3-2.5K-30P5 of 1134 kg capacity.

Technical Schedule No S290 Variation No 1 describes variant 2.

**Variant:** approved 12 April 1994

3. Model BSP-A3-1K-30P5 of 450 kg capacity.

Technical Schedule No S290 Variation No 2 describes variant 3.

FILING ADVICE

Supplementary Certificate of Approval No S290 dated 14 March 1994 is superseded by this Certificate and may be destroyed.

The documentation for this approval now comprises:

Supplementary Certificate of Approval No S290 dated 8 July 1994  
Technical Schedule No S290 dated 17 November 1992 (incl. Table 1)  
Technical Schedule No S290 Variation No 1 dated 14 March 1994  
(incl. Table 2)  
Technical Schedule No S290 Variation No 2 dated 8 July 1994  
(incl. Table 3 and Notification of Change)  
Figures 1 and 2 dated 17 November 1992

Signed and sealed by a person authorised under Regulation 9 of the National Measurement (Patterns of Measuring Instruments) Regulations to exercise the powers and functions of the Commission under this Regulation.

A handwritten signature in black ink, appearing to read "J. Birch". The signature is written in a cursive style with a long horizontal stroke extending to the right.



# National Standards Commission

## TECHNICAL SCHEDULE No S290

**Pattern:** A Revere Transducers Model BSP-A3-500-30P5 Load Cell.

**Submittor:** Ramsey Engineering Pty Ltd  
20-22 Box Road  
Taren Point NSW 2229.

### 1. Description of Pattern

A Revere Transducers model BSP-A3-500-30P5 load cell of 227 kg capacity (refer Figure 1 and Table 1) approved for use with a maximum of 500 verification scale intervals.

#### 1.1 Method of Mounting

Mounting is to be in accordance with the manufacturer's instructions and as shown in Figure 2.

#### 1.2 Markings

The following is the minimum data required to be marked on the load cells:

Manufacturer's name or mark	
Model number	
Serial number	
NSC approval number	NSC No S290
Maximum rated capacity	

### 2. Description of Variant 1

Model BSP-A3-250-30P5 of 120 kg capacity approved for use with a maximum of 1500 verification scale intervals (refer Table 1).

TABLE 1

Type: Revere Transducers BSP-A3-###-30P5

Maximum capacity	120 kg	227 kg
Maximum number of verification scale intervals	1500	500
Minimum value of verification scale interval	0.031 kg	0.035 kg
Minimum dead load output return for multi-range instruments (DR)	0.031 kg	0.059 kg
Output rating (nominal)	3 (mV/V)	3 (mV/V)
Input impedance (nominal)	350 (ohms)	350 (ohms)
Supply voltage (AC or DC)	10 (V)	10 (V)
Cable length ( $\pm 0.1$ m)	5 (m)	5 (m)
Number of leads (plus shield)	4	4

NOTE: ### - '500' for the pattern (227 kg) and '250' for variant 1 (120 kg).



# National Standards Commission

## TECHNICAL SCHEDULE No S290

### VARIATION No 1

**Pattern:** A Revere Transducers Model BSP-A3-500-30P5 Load Cell.

**Submitter:** Ramsey Technology  
20-22 Box Road  
Taren Point NSW 2229.

#### 1. Description of Variant 2

A Revere Transducers model BSP-A3-2.5K-30P5 load cell of 1134 kg capacity (refer Figure 1 and Table 2) approved for use with a maximum of 2000 verification scale intervals.

##### 1.1 Method of Mounting

Mounting is to be in accordance with the manufacturer's instructions and as shown in Figure 2.

TABLE 1

Type: Revere Transducers BSP-A3-2.5K-30P5

Maximum capacity	1134 kg
Maximum number of verification scale intervals	2000
Minimum value of verification scale interval	0.15 kg
Minimum dead load output return for multi-range instruments (DR)	0.245 kg
Output rating (nominal)	3 mV/V
Input impedance (nominal)	350 ohms
Supply voltage (AC or DC)	10 V
Cable length ( $\pm 0.1$ m)	4 m
Number of leads (plus shield)	4



# National Standards Commission

TECHNICAL SCHEDULE No S290

VARIATION No 2

**Pattern:** A Revere Transducers Model BSP-A3-500-30P5 Load Cell.

**Submitter:** Ramsey Technology  
20-22 Box Road  
Taren Point NSW 2229.

## 1. Description of Variant 3

A Revere Transducers model BSP-A3-1K-30P5 load cell of 450 kg capacity (refer Figure 1 and Table 3) approved for use with a maximum of 1000 verification scale intervals.

### 1.1 Method of Mounting

Mounting is to be in accordance with the manufacturer's instructions and as shown in Figure 2.

TABLE 3

Type: Revere Transducers BSP-A3-1K-30P5

Maximum capacity	450 kg
Maximum number of verification scale intervals	1000
Minimum value of verification scale interval	0.091 kg
Minimum dead load output return for multi-range instruments (DR)	0.0675 kg
Output rating (nominal)	3 mV/V
Input impedance (nominal)	350 ohms
Supply voltage (AC or DC)	10 V
Cable length ( $\pm 0.1$ m)	4 m
Number of leads (plus shield)	4

## NOTIFICATION OF CHANGE

In Technical Schedule No S290 Variation No 1 dated 14 March 1994 the caption for the table should be amended to read 'Table 2'.





**National Standards Commission**  
**Notification of Change**  
**Supplementary Certificate of Approval No S290**  
**Change No 1**

The following changes are made to the approval documentation for the

Revere Transducers Model BSP-A3-500-30P5 Load Cell

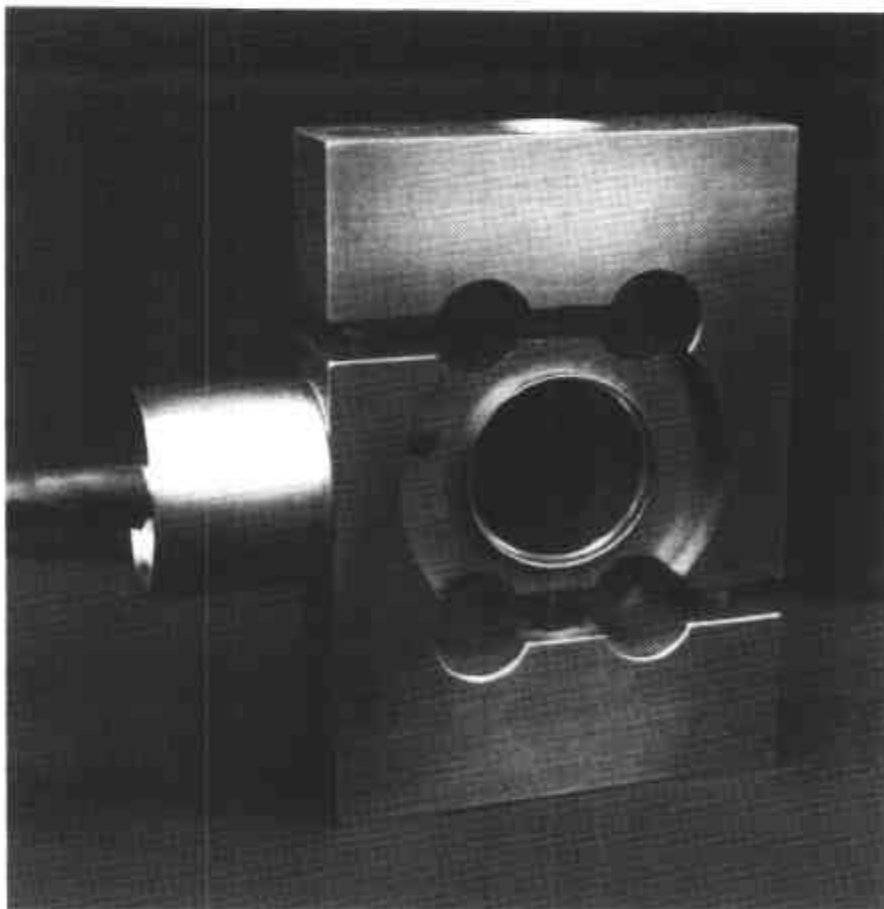
submitted by Ramsey Technology  
20-22 Box Road  
Taren Point NSW 2229.

In Supplementary Certificate of Approval No S290 dated 8 July 1994;

- (i) The Condition of Approval referring to the review of the approval should be amended to read:  
"This approval becomes subject to review on or after 1 October 2002."
- (ii) The Condition of Approval referring to the expiry of the approval should be deleted.

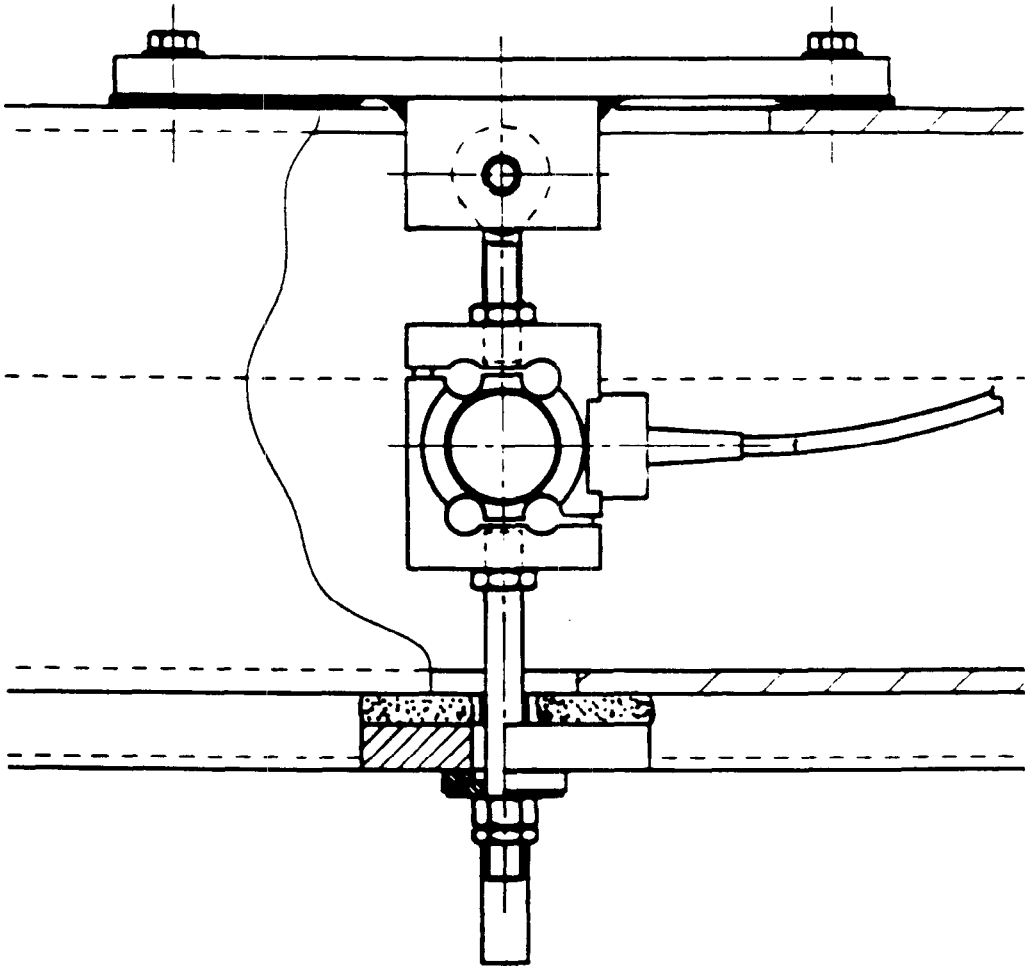
Signed and sealed by a person authorised under Regulation 9 of the National Measurement (Patterns of Measuring Instruments) Regulations to exercise the powers and functions of the Commission under this Regulation.

FIGURE S290 - 1



Revere Transducers Model BSP-A3-500-30P5 Load Cell

FIGURE S290 - 2



Typical Mounting Method