

National Standards Commission



Supplementary Certificate of Approval

No S268

Issued under Regulation 9
of the
National Measurement (Patterns of Instruments) Regulations

This is to certify that an approval for use for trade has been granted in respect of the

Toledo-Werk Model RLC 5000 Load Cell

submitted by Toledo Scale (Australia) Ltd
525 Graham Street
Port Melbourne VIC 3207.

Signed and sealed by a person authorised under
Regulation 9 of the National Measurement
(Patterns of Instruments) Regulations to exercise
the powers and functions of the Commission under
this Regulation.

A handwritten signature in black ink, appearing to read 'J. Birch'.

CONDITIONS OF APPROVAL

This approval is subject to review on or after 1/7/95.

This approval expires in respect of new instruments on 1/7/96.

Instruments purporting to comply with this approval shall be marked NSC No S268 and only by persons authorised by the submitter.

Instruments incorporating a component purporting to comply with this approval shall be marked NSC No S268 in addition to the approval number of the instrument.

It is the submitter's responsibility to ensure that all instruments marked with this approval number are constructed as described in the drawings and specifications lodged with the Commission and with the relevant Certificate of Approval and Technical Schedule. Failure to comply with this Condition may attract penalties under Section 19B of the National Measurement Act and may result in cancellation or withdrawal of the approval, in accordance with the Commission's Document 106.

The values of the performance criteria (maximum number of scale intervals etc.) applicable to an instrument incorporating the pattern approved herein shall be within the limits specified herein and in any approval documentation for the other components.

The Commission reserves the right to examine any instrument or component of an instrument purporting to comply with this approval.

DESCRIPTIVE ADVICE

Pattern: approved 20/6/90

- A Toledo-Werk model RLC 5000 load cell of 5 000 kg maximum capacity.

Technical Schedule No S268 describes the pattern.

FILING ADVICE

The documentation for this approval comprises.

Supplementary Certificate of Approval No S268 dated 13/8/90
Technical Schedule No S268 dated 13/8/90 (incl. Table 1)
Figures 1 and 2 dated 13/8/90



National Standards Commission

S268
13/8/90

TECHNICAL SCHEDULE No S268

Pattern: Toledo-Werk Model RLC 5000 Load Cell.

Submitter: Toledo Scale (Australia) Ltd
525 Graham Street
Port Melbourne VIC 3027.

1. Description of Pattern

The pattern is a Toledo-Werk model RLC 5000 load cell of 5 000 kg capacity (refer Figure 1 and Table 1) approved for use with a maximum of 3 000 verification scale intervals.

1.1 Method of Mounting

Mounting is to be in accordance with the manufacturer's instructions. Figure 2 shows typical methods.

1.2 Markings

The following is the minimum data required to be marked on the load cells:

Manufacturer's name or mark
Model number
Serial number
NSC approval number
Maximum rated capacity

NSC No S268

TABLE 1

Type: Toledo-Werk model RLC 5000

Maximum capacity		5 000 kg
Maximum number of verification	(a)	3 000
scale intervals	(b)	3 000
Minimum value of verification	(a)	0.37 kg
scale interval	(b)	0.93 kg
Output rating (nominal)		2.0 mV/V
Input impedance (nominal)		1 115 ohms
Supply voltage (AC or DC)		10-30 V
Number of leads (plus shield)		4
Cable length (± 0.1 m)		5.0 m

(a) Instruments with automatic zero track.

(b) Instruments without automatic zero track.

National Standards Commission



NOTIFICATION OF CHANGE

VARIOUS CERTIFICATES OF APPROVAL

The following changes are made to the approval documentation for various approvals

submitted by Toledo Scale (Australia) Ltd
525 Graham Street
Port Melbourne VIC 3207.

In the Certificates and Technical Schedules listed overleaf, the following changes should be made: (Note: Only current approvals are listed.)

1. The submitter should be changed to read;

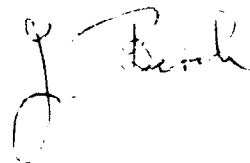
Mettler Toledo Limited

(the address remains unchanged)
2. All references to 'Toledo' instruments or components should be amended to read 'Toledo (or Mettler or Mettler Toledo)'.

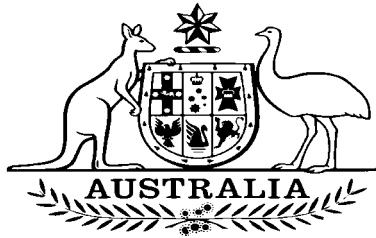
NOTE: Any 'Toledo' instrument or component described in the approval documentation may now also be known as 'Mettler or Mettler Toledo'.

APPROVAL NUMBER	PATTERN
6/4C/65	8214 Weighing Instrument
6/4C/68	8215 Weighing Instrument
6/4D/242	8421 Weighing Instrument
6/9C/2A	2191 Weighing Instrument
6/9C/24A	2503 Weighing Instrument
6/9C/28	2020 Weighing Instrument
6/9C/24A 44A	2985 Weighing Instrument
6/9C/76	2295 Weighing Instrument
6/9C/87	2375 Weighing Instrument
6/9C/97	2155 Weighing Instrument
6/9C/98	9118 Weighing Instrument
6/9C/206	6303 Weighing Instrument
6/9C/231	1938 Weighing Instrument
6/10B/46A	7560 Weighing Instrument
6/14B/9A	2352 Hopper Weighing Instrument
6/18/21	2299 Overhead Weighing Instrument
S253	8530 Digital Indicator
S266	8520 Digital Indicator
S283	8510 Digital Indicator
S111A	0721 Load Cell
S112A	0723 Load Cell
S143	0752 Load Cell
S172	0725 Load Cell
S211	0742 Load Cell
S252	0760 Load Cell
S264	0752 Load Cell
S268	RLC 5000 Load Cell

Signed and sealed by a person authorised under Regulation 9 of the National Measurement (Patterns of Measuring Instruments) Regulations to exercise the powers and functions of the Commission under this Regulation.



National Standards Commission



Notification of Change Supplementary Certificate of Approval No S268 Change No 1

The following change is made to the approval documentation for the

Toledo-Werk Model RLC 5000 Load Cell

submitted by Mettler Toledo Limited
(formerly Toledo Scale (Australia) Ltd)
525 Graham Street
Port Melbourne VIC 3207.

In Supplementary Certificate of Approval No S268 dated 13 August 1990, the Condition of Approval referring to the expiry of the approval should be amended to read:

“This approval expires in respect of new instruments on 1 July 1998.”

Signed and sealed by a person authorised under Regulation 9 of the National Measurement (Patterns of Measuring Instruments) Regulations to exercise the powers and functions of the Commission under this Regulation.

A handwritten signature in black ink, consisting of a large, stylized initial 'J' followed by several loops and a long horizontal stroke at the end.

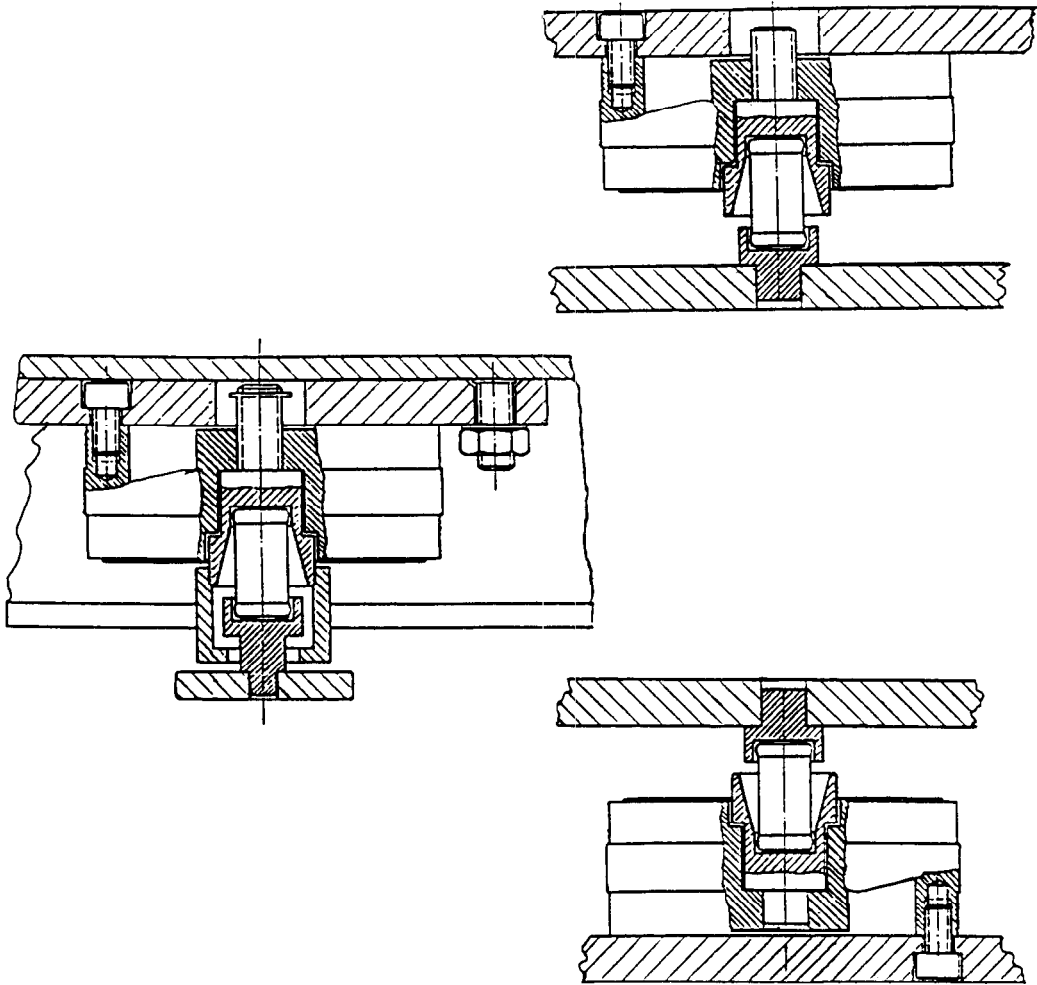
S268
13/8/90

FIGURE S268 - 1



Toledo-Werk Model RLC 5000 Load Cell

FIGURE S268 - 2



Typical Mounting Methods