



# NATIONAL STANDARDS COMMISSION

S252  
28/8/89

## NATIONAL MEASUREMENT (PATTERNS OF INSTRUMENTS) REGULATIONS

### REGULATION 9

#### SUPPLEMENTARY CERTIFICATE OF APPROVAL No S252

This is to certify that an approval for use for trade has been granted in respect of the pattern and variant of the

Toledo Model 0760 Load Cell

submitted by Toledo Scale (Australia) Limited  
525 Graham Street  
Port Melbourne VIC 3207.

#### CONDITIONS OF APPROVAL

##### General:

This approval is subject to review on or after 1/8/94.  
This approval expires in respect of new instruments on 1/8/95.

Load cells purporting to comply with this approval shall be marked NSC No S252. Instruments incorporating a load cell purporting to comply with this approval shall be marked NSC No S252 in addition to the approval number of the instrument.

This approval may be withdrawn if load cells are constructed other than in accordance with the drawings and specifications lodged with the Commission.

The values of the performance criteria (maximum number of scale intervals etc.) applicable to an instrument incorporating these load cells shall be within the limits specified in this approval and in any approval documentation for the other components.

The load cells shall be subject to regular certification by the Commission.

##### Special:

These load cells shall only be used with a Toledo indicator which is Commission-approved for use with Toledo 'Digitol' load cells.

Signed

Executive Director

#### Descriptive Advice

Pattern: approved 4/7/89

- Toledo model 0760 ('Digitol') load cell of 22 700 kg maximum capacity.

Variant: approved 4/7/89

1. Of 45 000 kg maximum capacity.

Technical Schedule No S252 describes the pattern and variants 1 and 2.

Filing Advice

The documentation for this approval comprises:

Supplementary Certificate of Approval No S252 dated 28/8/89  
Technical Schedule No S252 dated 28/8/89 (Incl. Table 1)  
Figures 1 and 2 dated 28/8/89



# NATIONAL STANDARDS COMMISSION

S252  
28/8/89

## TECHNICAL SCHEDULE No S252

Pattern: Toledo Model 0760 ('Digitol') Load Cell.

Submittor: Toledo Scale (Australia) Limited  
525 Graham Street  
Port Melbourne VIC 3207.

### 1. Description of Pattern

The pattern is a Toledo model 0760 ('Digitol') load cell of 27 000 kg maximum capacity (refer Figure 1 and Table 1).

These load cells shall only be used with a Toledo indicator which is Commission-approved for use with Toledo 'Digitol' load cells.

#### 1.1 Method of Mounting

Mounting is to be in accordance with the manufacturer's instructions. A typical method is shown in Figure 2.

#### 1.2 Markings

The following is the minimum data required to be marked on the load cells:

Manufacturer's name or mark	
Model number	
Serial number	
NSC approval number	NSC No S252
Maximum rated capacity	

### 2. Description of Variant 1

Of 45 000 kg capacity (refer Table 1).

TABLE 1

Type:	Toledo model 0760	
Maximum capacity	22 700 kg	45 000 kg
Maximum number of verification	(a) 3000	(a) 3000
scale intervals	(b) 3000	(b) 3000
Minimum value of verification	(a) 0.81 kg	(a) 2.29 kg
scale interval	(b) 2.03 kg	(b) 5.72 kg

(a) Instruments with automatic zero track.

(b) Instruments without automatic zero track.

# National Standards Commission



## NOTIFICATION OF CHANGE

### SUPPLEMENTARY CERTIFICATE OF APPROVAL No S252

#### CHANGE No 1

The following change is made to the approval documentation for the

Toledo Model 0760 Load Cell

submitted by Toledo Scale (Australia) Ltd  
(now Mettler Toledo Limited)  
525 Graham Street  
Port Melbourne VIC 3207.

In Certificate of Approval No S252 dated 28 August 1989, the Condition of Approval referring to the expiry of the approval should be amended to now read as shown below:

"This approval expires in respect of new instruments on 1 February 1996."

Signed and sealed by a person authorised under Regulation 9 of the National Measurement (Patterns of Measuring Instruments) Regulations to exercise the powers and functions of the Commission under this Regulation.

A handwritten signature in black ink, appearing to read 'J. Birch'.

# National Standards Commission



NOTIFICATION OF CHANGE  
SUPPLEMENTARY CERTIFICATE OF APPROVAL No S252  
CHANGE No 2

The following change is made to the approval documentation for the

Toledo Model 0760 Load Cell

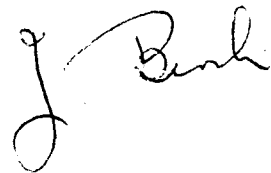
submitted by Toledo Scale (Australia) Ltd  
(now Mettler Toledo Limited)  
525 Graham Street  
Port Melbourne VIC 3207.

In Certificate of Approval No S252 dated 28 August 1989, the Condition of Approval referring to the expiry of the approval should be amended to now read as shown below:

"This approval expires in respect of new instruments on 1 August 1996."

NOTE: This was previously amended by Notification of Change No 1 dated 10 September 1995.

Signed and sealed by a person authorised under Regulation 9 of the National Measurement (Patterns of Measuring Instruments) Regulations to exercise the powers and functions of the Commission under this Regulation.



# National Standards Commission



## NOTIFICATION OF CHANGE

### VARIOUS CERTIFICATES OF APPROVAL

The following changes are made to the approval documentation for various approvals

submitted by Toledo Scale (Australia) Ltd  
525 Graham Street  
Port Melbourne VIC 3207.

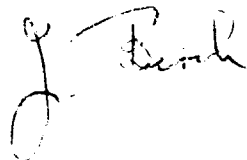
In the Certificates and Technical Schedules listed overleaf, the following changes should be made: (Note: Only current approvals are listed.)

1. The submittor should be changed to read;  
Mettler Toledo Limited  
(the address remains unchanged)
2. All references to 'Toledo' instruments or components should be amended to read 'Toledo (or Mettler or Mettler Toledo)'.

NOTE: Any 'Toledo' instrument or component described in the approval documentation may now also be known as 'Mettler or Mettler Toledo'.

APPROVAL NUMBER	PATTERN
6/4C/65	8214 Weighing Instrument
6/4C/68	8215 Weighing Instrument
6/4D/242	8421 Weighing Instrument
6/9C/2A	2191 Weighing Instrument
6/9C/24A	2503 Weighing Instrument
6/9C/28	2020 Weighing Instrument
6/9C/24A 44A	2985 Weighing Instrument
6/9C/76	2295 Weighing Instrument
6/9C/87	2375 Weighing Instrument
6/9C/97	2155 Weighing Instrument
6/9C/98	9118 Weighing Instrument
6/9C/206	6303 Weighing Instrument
6/9C/231	1938 Weighing Instrument
6/10B/46A	7560 Weighing Instrument
6/14B/9A	2352 Hopper Weighing Instrument
6/18/21	2299 Overhead Weighing Instrument
S253	8530 Digital Indicator
S266	8520 Digital Indicator
S283	8510 Digital Indicator
S111A	0721 Load Cell
S112A	0723 Load Cell
S143	0752 Load Cell
S172	0725 Load Cell
S211	0742 Load Cell
S252	0760 Load Cell
S264	0752 Load Cell
S268	RLC 5000 Load Cell

Signed and sealed by a person authorised under Regulation 9 of the National Measurement (Patterns of Measuring Instruments) Regulations to exercise the powers and functions of the Commission under this Regulation.



5252  
28/8/89

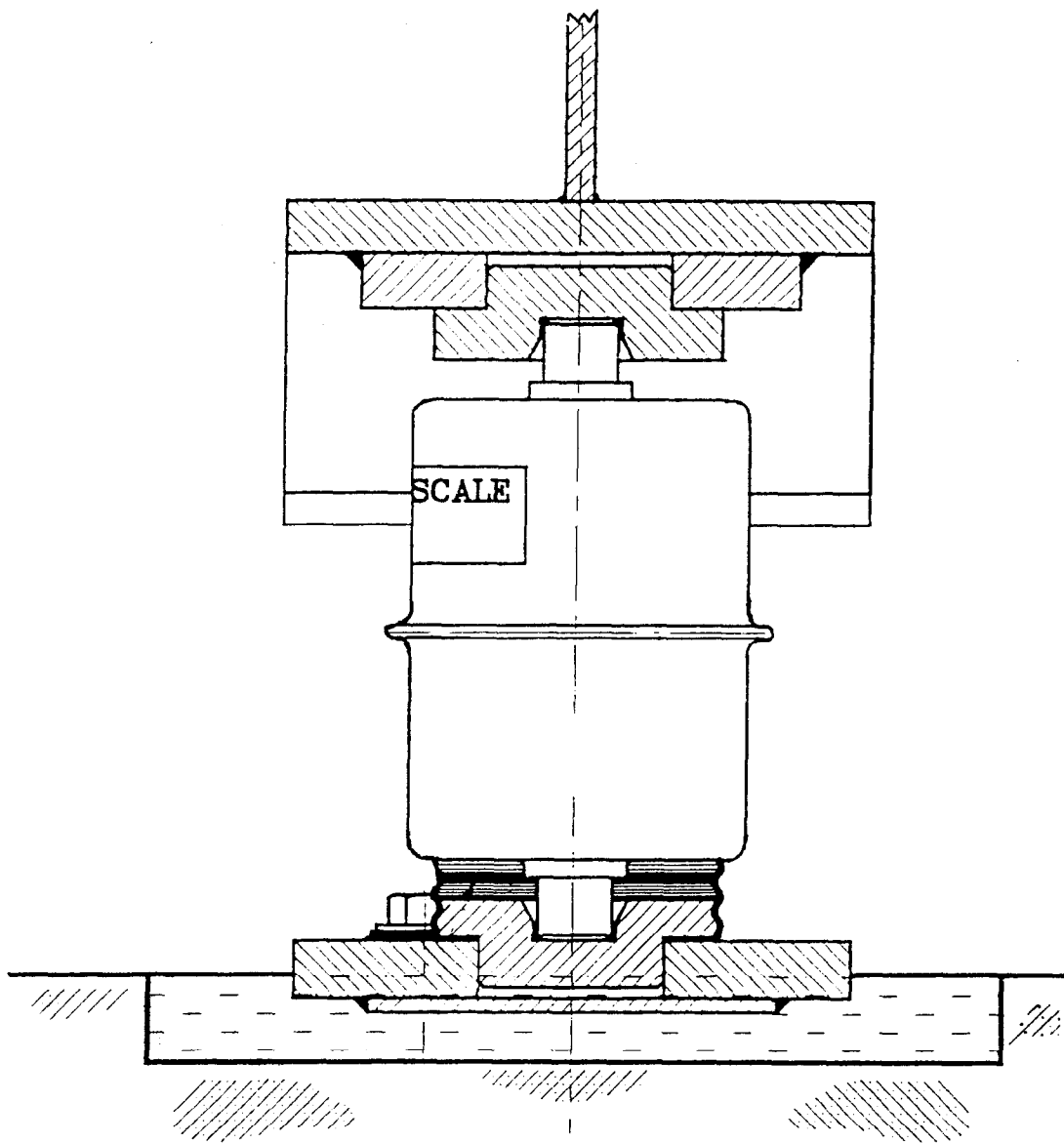
Figure S252 - 1



Toledo 0760 Load Cell



Figure S252 - 2



Typical Method of Mounting