



NATIONAL STANDARDS COMMISSION

CANCELLED 0/7

NATIONAL MEASUREMENT (PATTERNS OF INSTRUMENTS) REGULATIONS

REGULATION 9

SUPPLEMENTARY CERTIFICATE OF APPROVAL No S203

This is to certify that an approval for use for trade has been granted in respect of the pattern and variant of the

Avery Model 8713 Load Cell

submitted by Avery Australia Limited
3-5 Birmingham Avenue
Villawood NSW 2163.

CONDITIONS OF APPROVAL

This approval is subject to review on or after 1/3/91.

Instruments incorporating a load cell purporting to comply with this approval shall be marked NSC No S203 in addition to the approval number of the instrument.

This approval may be withdrawn if instruments are constructed and used other than in accordance with the drawings and specifications lodged with the Commission.

The number of scale intervals applicable to the instrument shall be no greater than the number of verification scale intervals approved for the basework or the load cell or the indicator, whichever is the smallest.

The load cells used shall be subject to regular certification by the Commission.

Signed

Executive Director

Descriptive Advice

Pattern: approved 27/2/86

. Avery model 8713 load cell of 250 kg capacity.

Variant: approved 27/2/86

1. Of other capacities as listed in Table 1.

Technical Schedule No S203 describes the pattern and variant.

Filing Advice

The documentation for this approval comprises:

Supplementary Certificate of Approval No S203 dated 27/5/86
Technical Schedule No S203 dated 27/5/86 including Table 1
Figures 1 to 3 dated 27/5/86



NATIONAL STANDARDS COMMISSION

TECHNICAL SCHEDULE No S203

Pattern: Avery Model 8713 Load Cell

Submittor: Avery Australia Limited
3-5 Birmingham Avenue
Villawood NSW 2163

1. Description of Pattern

An Avery model 8713 load cell of 250 kg capacity (refer Figure 1 and Table 1).

1.1 Method of Mounting

Mounting is to be in accordance with one of the methods shown in Figures 2 and 3.

1.2 Marking

The following is the minimum data required to be marked on the load cell:

Manufacturer's name or mark	
Model number	
Serial number	
NSC approval number	NSC S203
Maximum rated capacity	

2. Description of Variant 1

In other capacities as listed in Table 1.

TABLE 1

Type: Avery 8713			
Maximum capacity	125 kg	250 kg	500 kg
Maximum number of verification scale intervals (*)	(a) 3000 (b) 3000 (c) 3000 (d) 3000	(a) 3500 (b) 3500 (c) 3500 (d) 3500	(a) 3500 (b) 3500 (c) 3500 (d) 3500
Minimum value of verification scale intervals (*)	(a) 0.013 kg (b) 0.02 kg (c) 0.013 kg (d) 0.02 kg	(a) 0.02 kg (b) 0.02 kg (c) 0.03 kg (d) 0.05 kg	(a) 0.04 kg (b) 0.05 kg (c) 0.07 kg (d) 0.10 kg
Output rating (nominal)	1.4 mV/V	1.7 mV/V	1.7 mV/V
Input impedance (nominal)	415 ohms	415 ohms	415 ohms
Supply voltage (AC or DC)	10-15 V	10-15 V	10-15 V
Cable length (\pm 0.01 m)	3.0 m	3.0 m	3.0 m
Number of leads (plus shield)	4	4	4

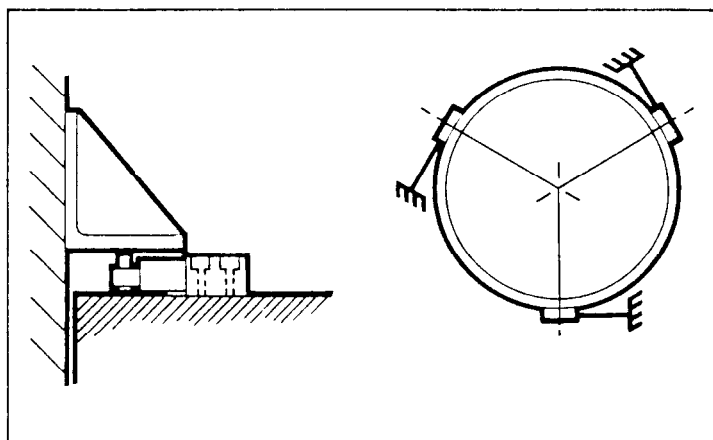
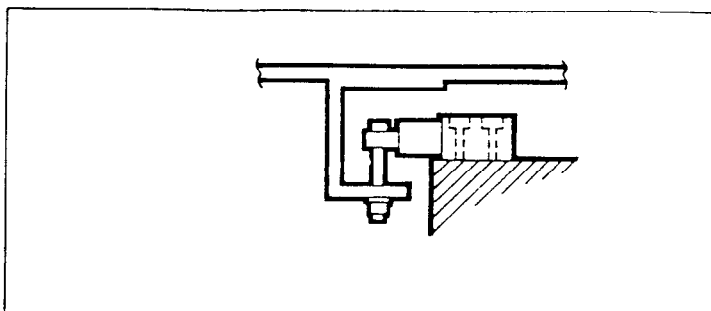
- *(a) Instruments with automatic zero track - multi cell applications
- (b) Instruments with automatic zero track - single cell applications
- (c) Instruments without automatic zero track - multi cell applications
- (d) Instruments without automatic zero track - single cell applications

FIGURE S203 - 1



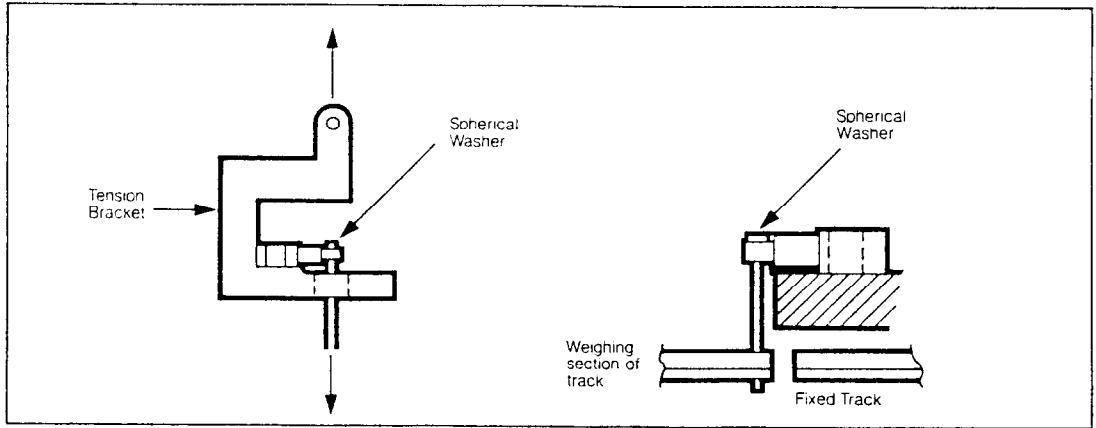
Avery 8713 Load Cell

FIGURE S203 - 2

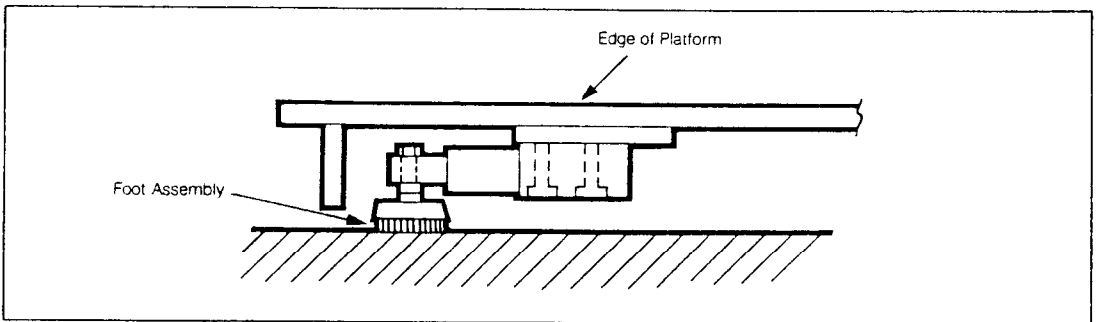


Alternative Mounting Methods

FIGURE S203 - 3



Overhead Track Scale



Low Profile Platform Scale

Alternative Mounting Methods