



CANCELLED ^{d3} 31-12-90

S188
17/7/85

NATIONAL STANDARDS COMMISSION

NATIONAL MEASUREMENT (PATTERNS OF INSTRUMENTS) REGULATIONS

REGULATION 9

SUPPLEMENTARY CERTIFICATE OF APPROVAL No S188

This is to certify that an approval has been granted that the pattern of the
Toyo Baldwin Model LBP-1 Load Cell

submitted by J W Wedderburn & Sons Pty Ltd
90 Parramatta Road
Summer Hill NSW 2130

is suitable for use for trade.

CONDITIONS OF APPROVAL

This approval is subject to review on or after 1/1/90.

Instruments incorporating a load cell purporting to comply with this approval shall be marked NSC No S188 in addition to the approval number of the instrument.

This approval may be withdrawn if load cells are constructed and used other than in accordance with the drawings and specifications lodged with the Commission.

The number of scale intervals applicable to the instrument shall be no greater than the number of verification scale intervals approved for the basework or the load cell(s) or the indicator, whichever is the smallest.

The load cells used shall be subject to regular certification by the Commission.

Signed

Executive Director

Descriptive Advice

Pattern: approved 12/11/84

. Toyo Baldwin model LBP-1 load cell of 1 t capacity.

Technical Schedule No S188 describes the pattern.

Filing Advice

The documentation for this approval comprises:

Certificate of Approval No S188 dated 17/7/85
Technical Schedule No S188 dated 17/7/85
Figures 1 and 2 dated 17/7/85



NATIONAL STANDARDS COMMISSION

TECHNICAL SCHEDULE No S188

Pattern: Toyo Baldwin Model LBP-1 Load Cell

Submittor: J W Wedderburn & Sons Pty Ltd
90 Parramatta Road
Summer Hill NSW 2130

1. Description of Pattern

The pattern is a Toyo Baldwin model LBP-1 load cell of 1 t capacity (Figure 1 and Table 1) assembled in a Commission-approved basework.

1.1 Method of Mounting

Mounting is to be in accordance with the method shown in Figure 2.

1.2 Marking

The following is the minimum data required to be marked on the load cell:

Manufacturer's name or mark	
Model number	
Serial number	
Approval number	NSC No S188
Maximum capacity	

TABLE 1

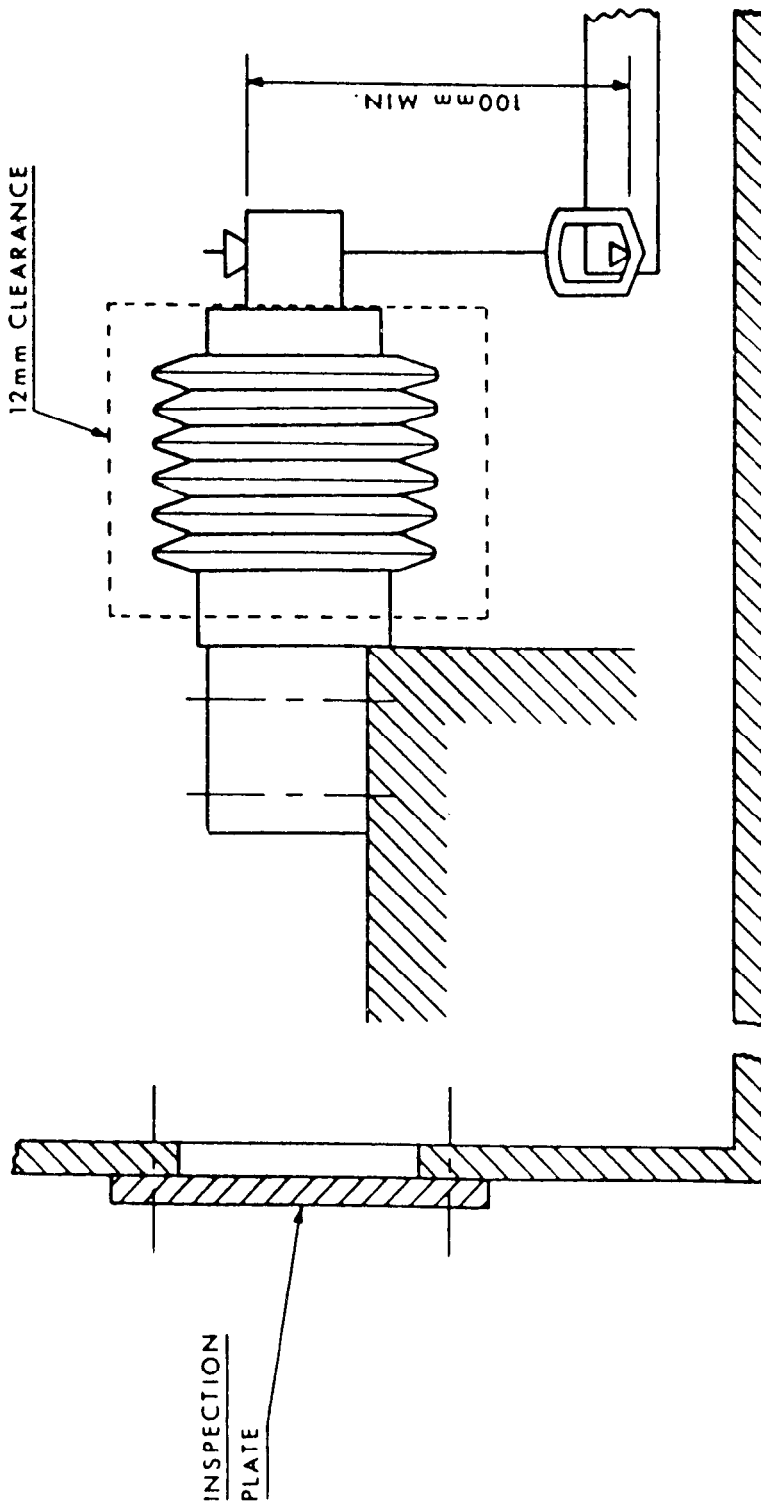
Type: Toyo Baldwin	LBP-1
Maximum capacity	1 t
Maximum number of verification scale intervals	1500
Minimum dead load	50 kg
Minimum value of verification scale interval	0.2 kg
Output rating (nominal)	2 mV/V
Input impedance (nominal)	390 ohms
Supply voltage (AC or DC)	12 V
Cable length (\pm 0.1 m)	4.1 m
Number of leads	5 (including shield)

FIGURE S188 - 1



Toyo Baldwin LBP-1 Load Cell

FIGURE S188 - 2



Typical Mounting Method