



## National Standards Commission

12 Lyonpark Road, North Ryde NSW

### **Cancellation Supplementary Certificate of Approval No S184**

This is to certify that the approval for use for trade granted in respect of the

Veeder-Root Model 788700 Bulk Flowmeter Indicator

submitted by Veeder-Root Australia Pty Ltd  
82 Herald Street  
Cheltenham VIC 3175

has been cancelled in respect of new instruments as from 1 August 2001.

Instruments which were verified/certified before that date may, with the concurrence of the relevant verifying authority, be submitted for reverification.

Signed by a person authorised under Regulation 60 of the National Measurement Regulations 1999 to exercise the powers and functions of the Commission under this Regulation.





# NATIONAL STANDARDS COMMISSION

## NATIONAL MEASUREMENT (PATTERNS OF INSTRUMENTS) REGULATIONS

### REGULATION 9

#### SUPPLEMENTARY CERTIFICATE OF APPROVAL No S184

This is to certify that an approval for use for trade has been granted in respect of the pattern and variant of the

Veeder-Root Model 788700 Bulk Flowmeter Indicator

submitted by Veeder-Root Australia Pty Ltd  
82 Herald Street  
Cheltenham Vic 3175.

#### CONDITIONS OF APPROVAL

##### General:

This approval is subject to review on or after 1/1/91.

Instruments purporting to comply with this approval shall be marked NSC No S184 in addition to the approval number of the pattern(s) to which they are connected.

This approval may be withdrawn if instruments are constructed and used other than as described in the drawings and specifications lodged with the Commission.

##### Special:

Any additional auxiliary devices used with this instrument shall comply with the requirements of General Supplementary Certificate No S1/0.

Signed

Acting Executive Director

#### Descriptive Advice

Pattern: approved 3/12/85

. Veeder-Root model 788700 bulk flowmeter indicator.

Variant: approved 3/12/85

1. Model 789000 indicator/printer.

Technical Schedule No S184 describes the pattern and variant.

#### Filing Advice

The documentation for this approval comprises:

Supplementary Certificate of Approval No S184 dated 12/5/86  
Technical Schedule No S184 dated 12/5/86 (including Test Procedure)  
Figures 1 and 2 dated 12/5/86



# NATIONAL STANDARDS COMMISSION

## TECHNICAL SCHEDULE No S184

Pattern: Veeder-Root Model 788700 Bulk Flowmeter Indicator

Submitter: Veeder-Root Australia Pty Ltd  
82 Herald Street  
Cheltenham Vic 3192

### 1. Description of Pattern

Veeder-Root model 788700 zero-start mechanical indicator which may be fitted to any Commission-approved bulk flowmeter.

The indicator has five elements indicating volume in 1 litre increments with the first element marked and numbered 0 to 9 (Figure 1). To reset the indicator to zero, the handle is rotated in the clockwise direction; a shutter covers the indicator elements until resetting is completed.

The maximum speed of rotation of the right-hand element of the indicator shall not exceed 200 rpm.

#### 1.1 Markings

Instruments shall be marked with the following data, together in one location:

Manufacturer's name or mark	
NSC approval number	NSC No S184
Model number	
Serial number	

#### 1.2 Verification Provision

Provision is made for the application of a verification mark.

### 2. Description of Variant 1

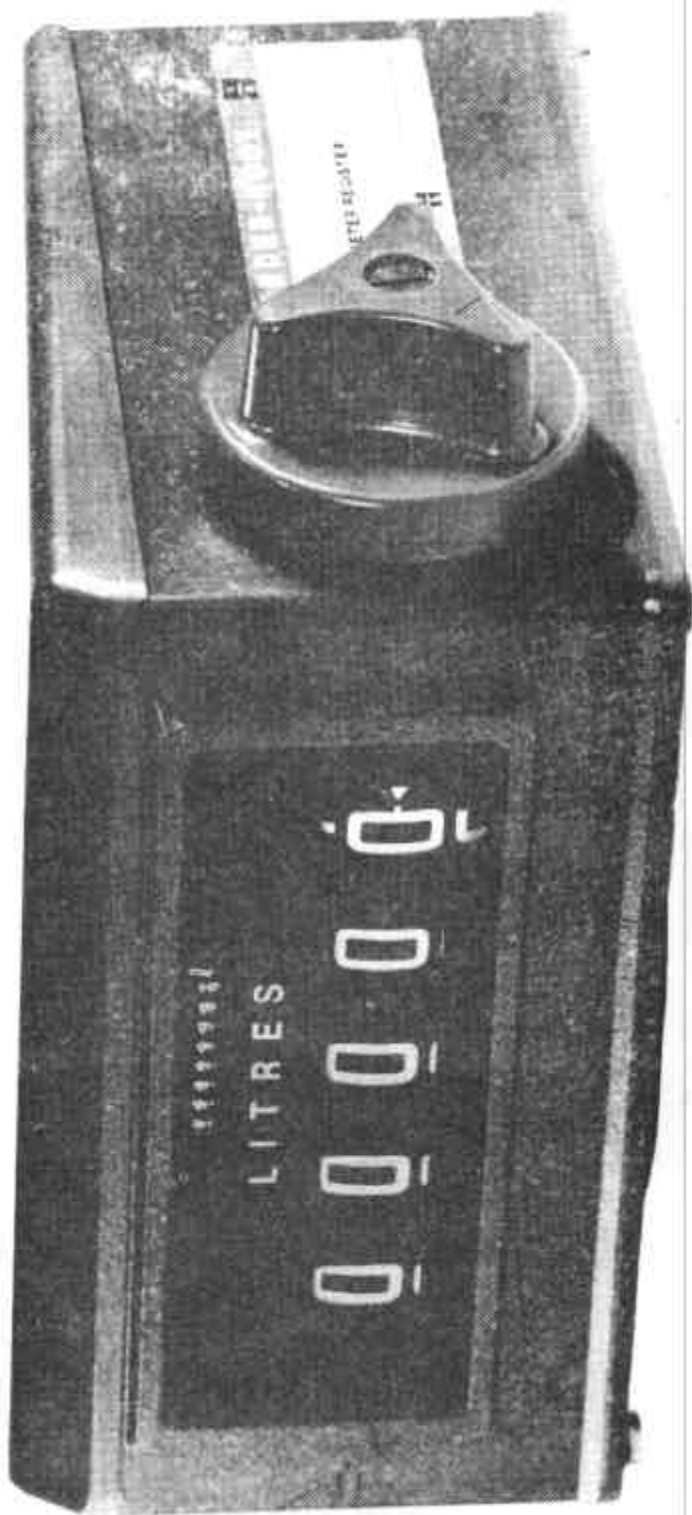
The indicator may be fitted with a model 788800 zero-start printer with single-handle reset mechanism, in which case it is known as a model 789000 indicator/printer (Figure 2). To operate the printer, insert a ticket and rotate the handle until an internal stop is reached. Complete the delivery and, before removing the ticket, rotate the handle as above to print the ticket.

The maximum speed of rotation of the right-hand element of the indicator/printer, which uses 1 litre increments, shall not exceed 200 rpm.

## TEST PROCEDURE No S184

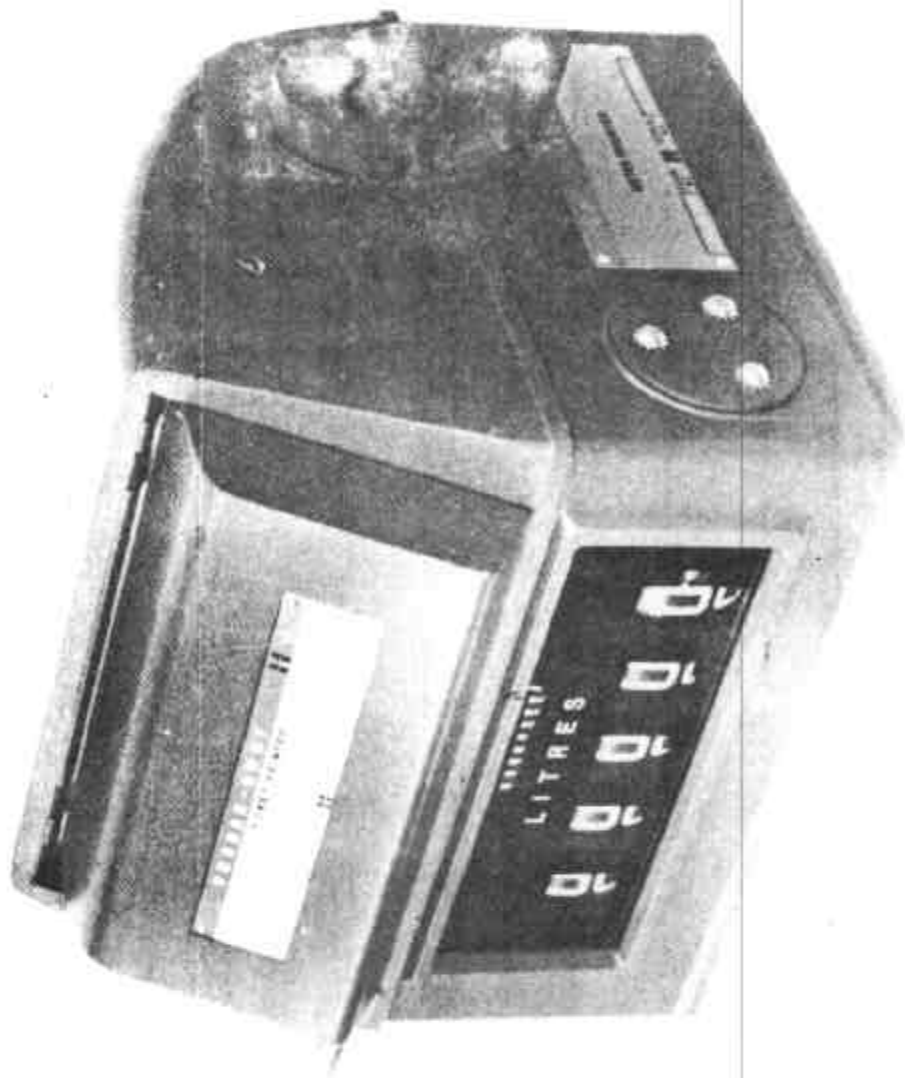
Instruments should be tested in conjunction with any tests specified in the approval documentation for the patterns to which they are connected.

FIGURE S184 - 1



Veeder-Root VR 788700 Indicator

FIGURE S184 - 2



Feeder-Root VR 769000 Indicator/Printer