

National Standards Commission



Supplementary Certificate of Approval

No S176A

Issued under Regulation 9
of the
National Measurement (Patterns of Instruments) Regulations

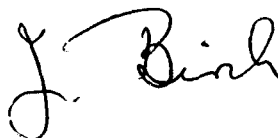
This is to certify that an approval for use for trade has been granted in respect of the

GEC-Avery Model 8708 Load Cell

submitted by GEC-Avery Australia Limited
3 Birmingham Avenue
Villawood NSW 2163.

- This Certificate is issued upon completion of a review of NSC approval No S176.

Signed and sealed by a person authorised under Regulation 9 of the National Measurement (Patterns of Instruments) Regulations to exercise the powers and functions of the Commission under this Regulation.



CONDITIONS OF APPROVAL

This approval is subject to review on or after 1/6/96.
This approval expires in respect of new instruments on 1/6/97.

Instruments purporting to comply with this approval shall be marked NSC No S176A and only by persons authorised by the submitter. Instruments incorporating a component purporting to comply with this approval shall be marked NSC No S176A in addition to the approval number of the instrument.

It is the submitter's responsibility to ensure that all instruments marked with this approval number are constructed as described in the drawings and specifications lodged with the Commission and with the relevant Certificate of Approval and Technical Schedule. Failure to comply with this Condition may attract penalties under Section 19B of the National Measurement Act and may result in cancellation or withdrawal of the approval, in accordance with the Commission's Document 106.

The values of the performance criteria (maximum number of scale intervals etc.) applicable to an instrument incorporating the pattern approved herein shall be within the limits specified herein and in any approval documentation for the other components.

The Commission reserves the right to examine any instrument or component of an instrument purporting to comply with this approval.

DESCRIPTIVE ADVICE

Pattern: approved 31/5/91

. A GEC-Avery model 8708 load cell of 1 500 kg capacity.

Variants: approved 31/5/91

1. Of 3 000 kg capacity.
2. Of 7 000 kg capacity.

Technical Schedule No S176A describes the pattern and variants 1 and 2.

FILING ADVICE

The documentation for this approval comprises:

Supplementary Certificate of Approval No S176A dated 10/7/91
Technical Schedule No S176A dated 10/7/91 (incl. Table 1)
Figures 1 to 5 dated 10/7/91



National Standards Commission

TECHNICAL SCHEDULE No S176A

Pattern: GEC-Avery Model 8708 Load Cell.

Submittor: GEC-Avery Australia Limited
3 Birmingham Avenue
Villawood NSW 2163.

1. Description of Pattern

The pattern is a GEC-Avery model 8708 load cell of 1 500 kg capacity (refer Figure 1 and Table 1) approved for use with a maximum of 2 500 verification scale intervals.

1.1 Method of Mounting

Mounting is to be in accordance with the manufacturer's instructions. Figures 2 to 5 show typical mounting methods.

1.2 Markings

The following is the minimum data required to be marked on the load cells:

Manufacturer's name or mark	
Model number	
Serial number	
NSC approval number	NSC No S176A
Maximum rated capacity	

2. Description of Variants (refer Table 1)

2.1 Variant 1

Of 3 000 kg capacity.

2.2 Variant 2

Of 7 000 kg capacity.

TABLE 1

Type: GEC-Avery 8708

Maximum capacity		1 500 kg	3 000 kg	7 000 kg
Maximum number of verification scale intervals	(a)	2 500	2 500	3 000
	(b)	2 500	2 500	3 000
Minimum value of verification scale interval	(a)	0.18 kg	0.36 kg	0.70 kg
	(b)	0.18 kg	0.36 kg	1.39 kg
Output rating (nominal)		1.75 mV/V	1.75 mV/V	1.75 mV/V
Input impedance (nominal)		390 ohms	390 ohms	410 ohms
Supply voltage (AC or DC)		10-17 V	10-17 V	10-17 V
Cable lengths (nominal)		1.5 or 4 m	1.5 or 4 m	1.5 to 10 m
Number of leads (plus shield)		4	4	6

(a) Instruments with automatic zero track.

(b) Instruments without automatic zero track.

National Standards Commission



NOTIFICATION OF CHANGE

SUPPLEMENTARY CERTIFICATE OF APPROVAL No S176A

CHANGE No 1

The following change is made to the approval documentation for the

GEC Avery Model 8708 Load Cell

submitted by GEC Avery Australia Limited
12 Rachael Close
Silverwater NSW 2141.

In Technical Schedule No S176A dated 10 July 1991, Table 1 is replaced by the Table below which includes amended data for the pattern and variants 1 & 2 (1500, 3000 and 7000 kg capacity cells, respectively.)

Type: GEC Avery Model 8708

Maximum capacity	kg	1500	3000	7000
Maximum number of verification scale intervals		1500	2500	3000
Minimum value of verification scale interval	kg	0.193	0.36	1.39
Minimum dead load output return for multi-range instruments (DR)	kg	0.386	0.216	1.58
Output rating (nominal)	mV/V	1.75	1.75	1.75
Input impedance (nominal)	Ω	390	390	410
Supply voltage (AC or DC)	V	10-17	10-17	10-17
Cable length (nominal)	m	1.5, 4	1.5, 4	1.5-10
Number of leads (plus shield)		4	4	6

Signed and sealed by a person authorised under Regulation 9 of the National Measurement (Patterns of Measuring Instruments) Regulations to exercise the powers and functions of the Commission under this Regulation.

National Standards Commission



Notification of Change Supplementary Certificate of Approval No S176A Change No 2

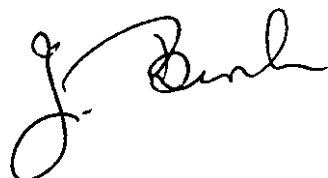
The following changes are made to the approval documentation for the

GEC Avery Model 8708 Load Cell

submitted by GEC Avery Australia Limited
12 Rachael Close
Silverwater NSW 2141.

- A. In Certificate of Approval No S176A dated 10 July 1991, the Condition of Approval referring to the expiry of the approval should be amended to read:
"This approval expires in respect of new instruments on 1 January 1998."
- B. In Table 1 issued as part of Notification of Change No 1 dated 27 April 1995, the value for the 'maximum number of verification scale intervals' for the 1500 kg capacity load cell, should be amended to read '2500'.

Signed and sealed by a person authorised under Regulation 9 of the National Measurement (Patterns of Measuring Instruments) Regulations to exercise the powers and functions of the Commission under this Regulation.



National Standards Commission



Notification of Change Supplementary Certificate of Approval No S176A Change No 3

The following change is made to the approval documentation for the

GEC Avery Model 8708 Load Cell

submitted by GEC Avery Australia Limited
12 Rachael Close
Silverwater NSW 2141.

In Supplementary Certificate of Approval No S176A dated 10 July 1991, the Condition of Approval referring to the expiry of the approval should be amended to read:

“This approval expires in respect of new instruments on 1 July 1998.”

NOTE: This was previously extended by Notification of Change No 2 dated 29 August 1997.

Signed and sealed by a person authorised under Regulation 9 of the National Measurement (Patterns of Measuring Instruments) Regulations to exercise the powers and functions of the Commission under this Regulation.



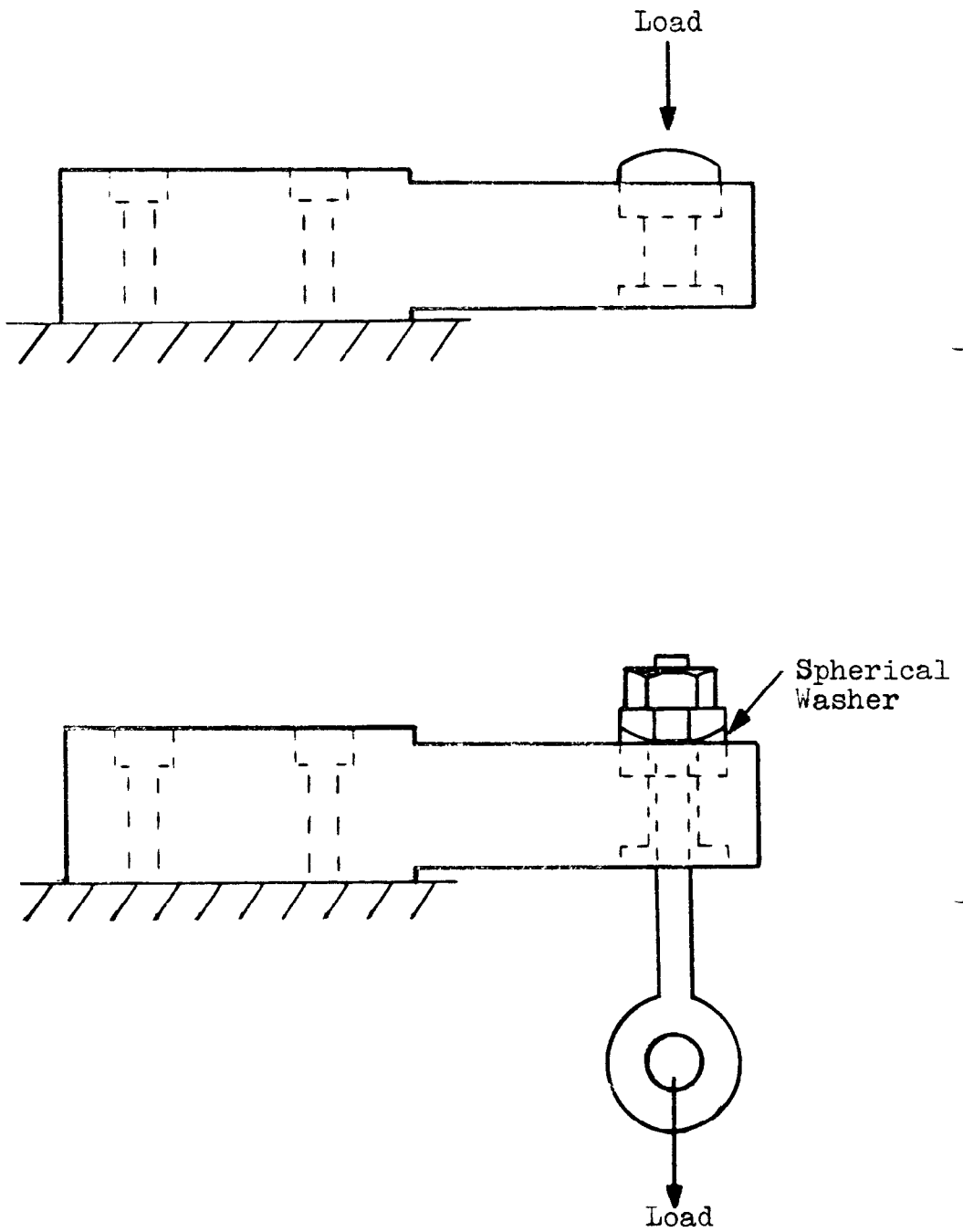
FIGURE S176A - 1



S176A
10/7/91

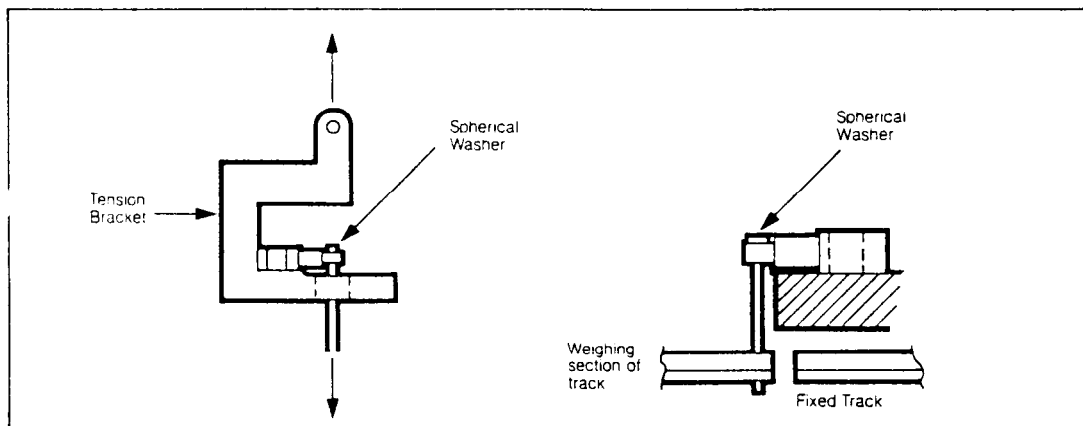
Avery Model 8708 Load Cell

FIGURE S176A - 2

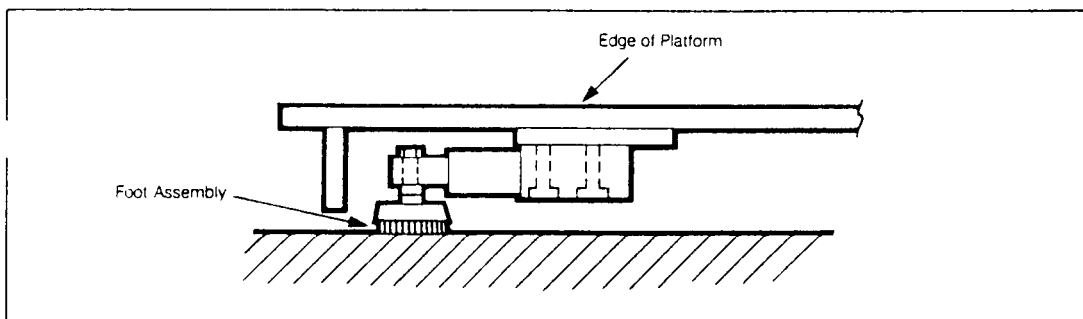


Typical Mounting Method

FIGURE S176A - 3



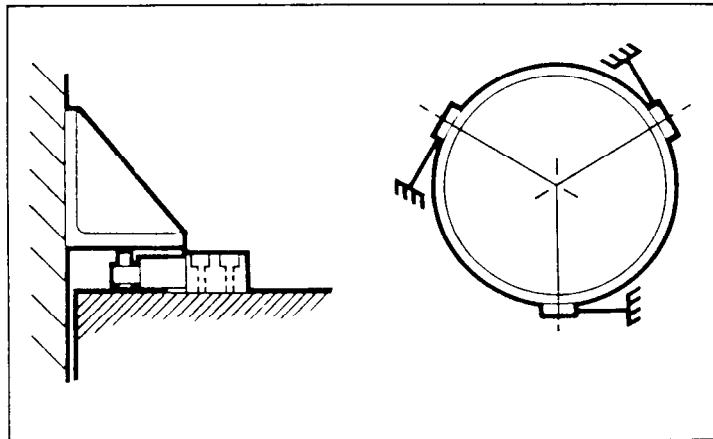
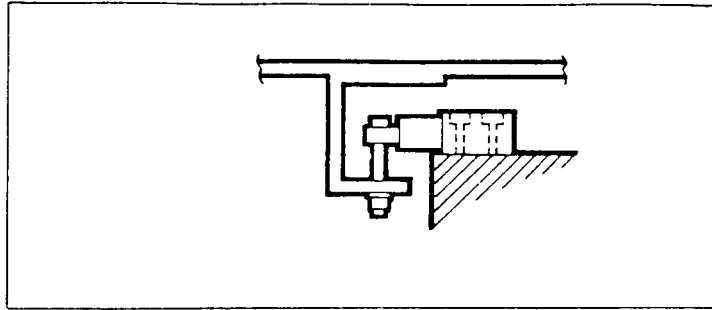
Overhead Track Scale



Low Profile Platform Scale

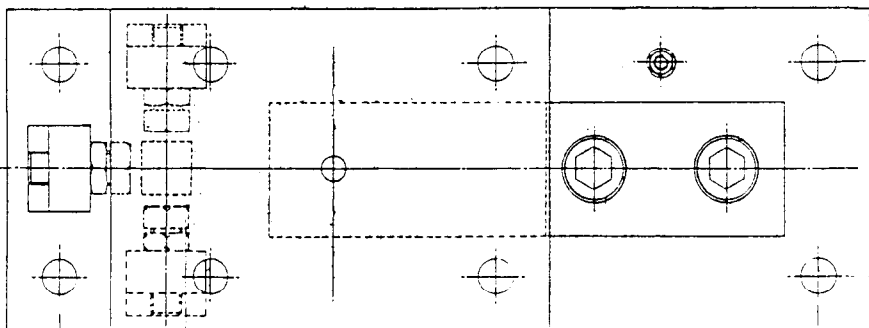
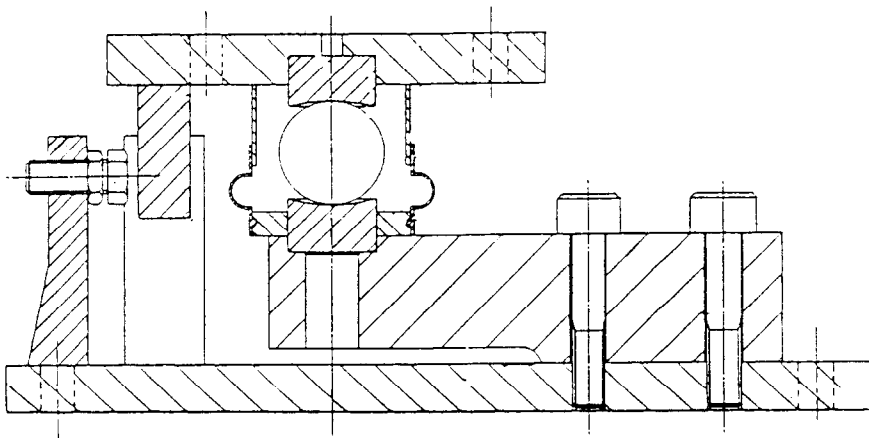
Alternative Mounting Methods

FIGURE S176A - 4



Alternative Mounting Methods

FIGURE S176A - 5



Alternative Mounting Method