



# NATIONAL STANDARDS COMMISSION

## NATIONAL MEASUREMENT (PATTERNS OF INSTRUMENTS) REGULATIONS

### REGULATION 9

#### SUPPLEMENTARY CERTIFICATE OF APPROVAL No S172

This is to certify that an approval for use for trade has been granted in respect of the pattern and variant of the

Toledo Model 0725 Load Cell

submitted by Toledo Scale (Australia) Ltd  
525 Graham Street  
Port Melbourne Vic 3207.

#### CONDITIONS OF APPROVAL

This approval is subject to review on or after 1/5/90.

Instruments incorporating a load cell purporting to comply with this approval shall be marked NSC No S172 in addition to the approval number of the instrument.

This approval may be withdrawn if load cells are constructed and used other than in accordance with the drawings and specifications lodged with the Commission.

The number of scale intervals applicable to the whole instrument shall be no greater than the number of verification scale intervals approved for the basework or the load cell(s) or the indicator, whichever is the smallest.

The load cells shall be subject to regular certification by the Commission.

Signed

Acting Executive Director

#### Descriptive Advice

Pattern: approved 29/3/85

. Toledo model 0725 load cell of 227 kg capacity.

Variant: approved 2/4/85

1. In various capacities as listed in Table 1.

Technical Schedule No S172 describes the pattern and variant.

#### Filing Advice

The documentation for this approval comprises:

Supplementary Certificate of Approval No S172 dated 20/12/85  
Technical Schedule No S172 (including Table 1) dated 20/12/85  
Figures 1 and 2 dated 20/12/85



# NATIONAL STANDARDS COMMISSION

## TECHNICAL SCHEDULE No S172

Pattern: Toledo Model 0725 Load Cell

Submittor: Toledo Scale (Australia) Ltd  
525 Graham Street  
Port Melbourne Vic 3207

### 1. Description of Pattern

The pattern is a Toledo model 0725 load cell of 227 kg capacity (refer Figure 1 and Table 1).

#### 1.1 Method of Mounting

Mounting is to be in accordance with one of the methods shown in Figure 2.

#### 1.2 Marking

The following is the minimum data required to be marked on the load cell:

Manufacturer's name or mark	
Model number	
Serial number	
NSC approval number	NSC No S172
Maximum rated capacity	

### 2. Description of Variant 1

In various capacities as listed in Table 1.

TABLE 1

Type: Toledo 0725			
Maximum capacity	227 kg	454 kg	907 kg
Maximum number of verification scale intervals	(a) 3000 (b) 3000 (c) 3000 (d) 3000	3000 3000 3000 3000	5000 5000 4500 3500
Minimum value of verification scale interval	(a) 0,023 kg (b) 0,05 kg (c) 0,032 kg (d) 0,05 kg	0,045 kg 0,05 kg 0,058 kg 0,10 kg	0,054 kg 0,10 kg 0,16 kg 0,20 kg
Output rating (nominal)	2 mV/V	2 mV/V	2 mV/V
Input impedance (nominal)	425 ohms	425 ohms	425 ohms
Supply voltage (AC or DC)	15-20 V	15-20 V	15-20 V
Cable length ( $\pm$ 0.1 m)	3,6 m	3,6 m	3,6 m
Number of leads (including shield)	7	7	7

- (a) Instruments with automatic zero track - multi cell applications
- (b) Instruments with automatic zero track - single cell applications
- (c) Instruments without automatic zero track - multi cell applications
- (d) Instruments without automatic zero track - single cell applications

# National Standards Commission



## NOTIFICATION OF CHANGE VARIOUS CERTIFICATES OF APPROVAL

The following changes are made to the approval documentation for various approvals

submitted by Toledo Scale (Australia) Ltd  
525 Graham Street  
Port Melbourne VIC 3207.

In the Certificates and Technical Schedules listed overleaf, the following changes should be made: (Note: Only current approvals are listed.)

1. The submitter should be changed to read;  
Mettler Toledo Limited  
(the address remains unchanged)
2. All references to 'Toledo' instruments or components should be amended to read 'Toledo (or Mettler or Mettler Toledo)'.

NOTE: Any 'Toledo' instrument or component described in the approval documentation may now also be known as 'Mettler or Mettler Toledo'.

APPROVAL NUMBER	PATTERN
6/4C/65	8214 Weighing Instrument
6/4C/68	8215 Weighing Instrument
6/4D/242	8421 Weighing Instrument
6/9C/2A	2191 Weighing Instrument
6/9C/24A	2503 Weighing Instrument
6/9C/28	2020 Weighing Instrument
6/9C/24A <i>44A</i>	2985 Weighing Instrument
6/9C/76	2295 Weighing Instrument
6/9C/87	2375 Weighing Instrument
6/9C/97	2155 Weighing Instrument
6/9C/98	9118 Weighing Instrument
6/9C/206	6303 Weighing Instrument
6/9C/231	1938 Weighing Instrument
6/10B/46A	7560 Weighing Instrument
6/14B/9A	2352 Hopper Weighing Instrument
6/18/21	2299 Overhead Weighing Instrument
S253	8530 Digital Indicator
S266	8520 Digital Indicator
S283	8510 Digital Indicator
S111A	0721 Load Cell
S112A	0723 Load Cell
S143	0752 Load Cell
S172	0725 Load Cell
S211	0742 Load Cell
S252	0760 Load Cell
S264	0752 Load Cell
S268	RLC 5000 Load Cell

Signed and sealed by a person authorised under Regulation 9 of the National Measurement (Patterns of Measuring Instruments) Regulations to exercise the powers and functions of the Commission under this Regulation.

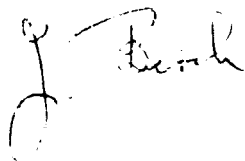
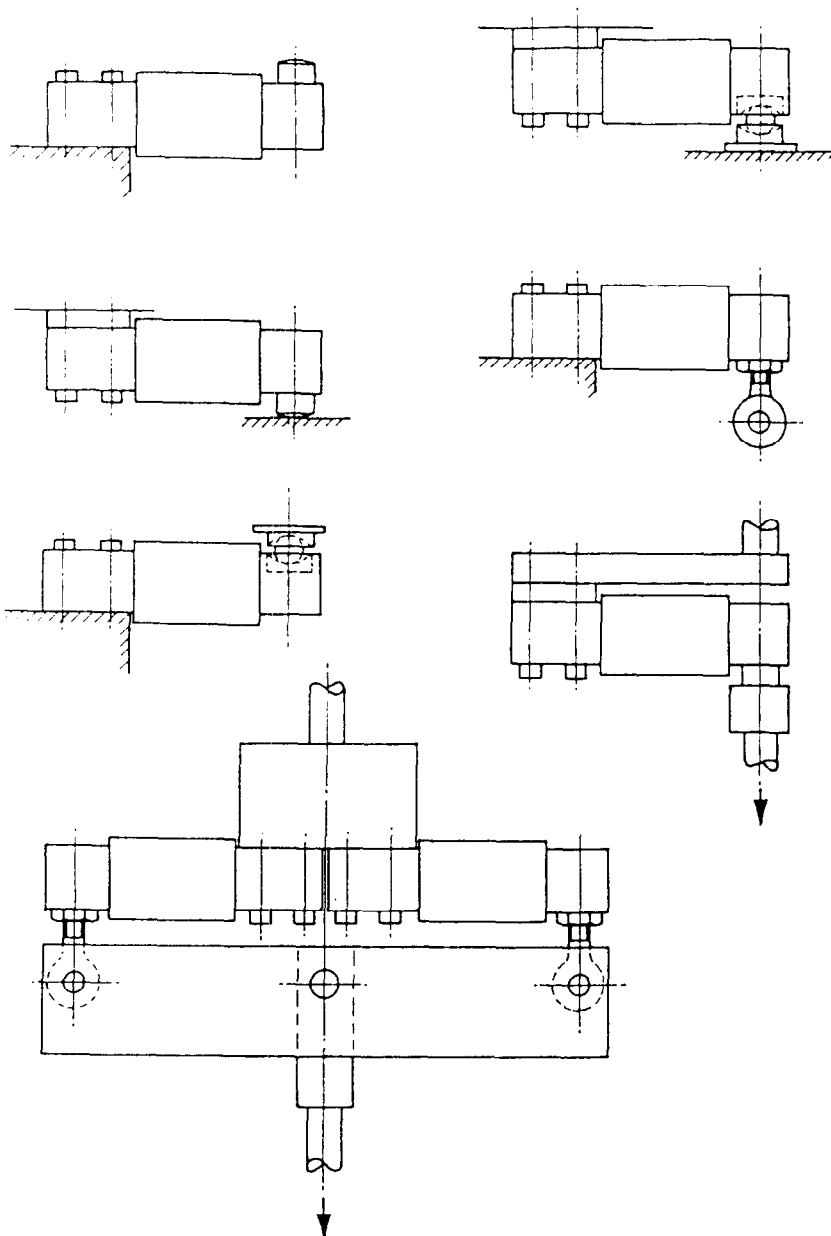


FIGURE S172 - 1



Toledo 0725 Load Cell

FIGURE S172 - 2



Mounting Methods