



CANCELLED

0/3  
31-12-90

**NATIONAL STANDARDS COMMISSION**  
**WEIGHTS & MEASURES (PATTERNS OF INSTRUMENTS) REGULATIONS**

REGULATION 9

SUPPLEMENTARY CERTIFICATE OF APPROVAL No S153

This is to certify that an approval has been granted by the Commission that the pattern of the

HBM Model Z3H3 Load Cell Of 500 kg Capacity

submitted by Material Control Systems Pty Ltd  
26 Banksia Road  
Caringbah, NSW, 2229,

is suitable for use for trade, when used in a Commission-approved weighing instrument.

The approval is subject to review on or after 1/6/88.

Instruments incorporating a load cell purporting to comply with this approval shall be marked NSC No S153 in addition to the approval number of the instrument.

Relevant drawings and specifications are lodged with the Commission.

Conditions of Approval

1. Any instrument incorporating a load cell purporting to comply with this approval shall have a maximum number of 3000 scale intervals.
2. The number of scale intervals applicable to the weighing instrument shall be no greater than the number of verification scale intervals approved for the basework, or the load cell(s), or the headwork, whichever is the smallest.
3. The load cell(s) to be used shall be subject to regular certification by the National Standards Commission.

Signed

*Raymond Speck*  
Acting Executive Director

Descriptive Advice

Pattern: approved 5/5/83

. HBM model Z3H3 load cell of 500 kg capacity.

Technical Schedule No S153 dated 25/5/83 describes the pattern.

Filing Advice

The documentation for this approval consists of:

Certificate of Approval No S153 dated 25/5/83  
Technical Schedule No S153 dated 25/5/83 (including Table 1)  
Figures 1 and 2 dated 25/5/83.

25/5/83.



# NATIONAL STANDARDS COMMISSION

## TECHNICAL SCHEDULE No S153

Pattern: HBM Model Z3H3 Load Cell Of 500 kg Capacity

Submittor: Material Control Systems Pty Ltd  
26 Banksia Road  
Caringbah, NSW, 2229.

### 1. Description of Pattern

The pattern is an HBM model Z3H3 load cell of 500 kg capacity (Figure 1 and Table 1) and is assembled in a Commission-approved weighing instrument.

#### 1.1 Method of mounting

Mounting is to be in accordance with the manufacturer's instructions and as shown in Figure 2.

The load cell cable is to be terminated in a sealed junction box.

#### 1.2 Marking

The following is the minimum data required to be marked on the load cell:

Manufacturer's name or mark	HBM
Model number	Z3H3
Serial number	.....
Maximum rated capacity	500 kg

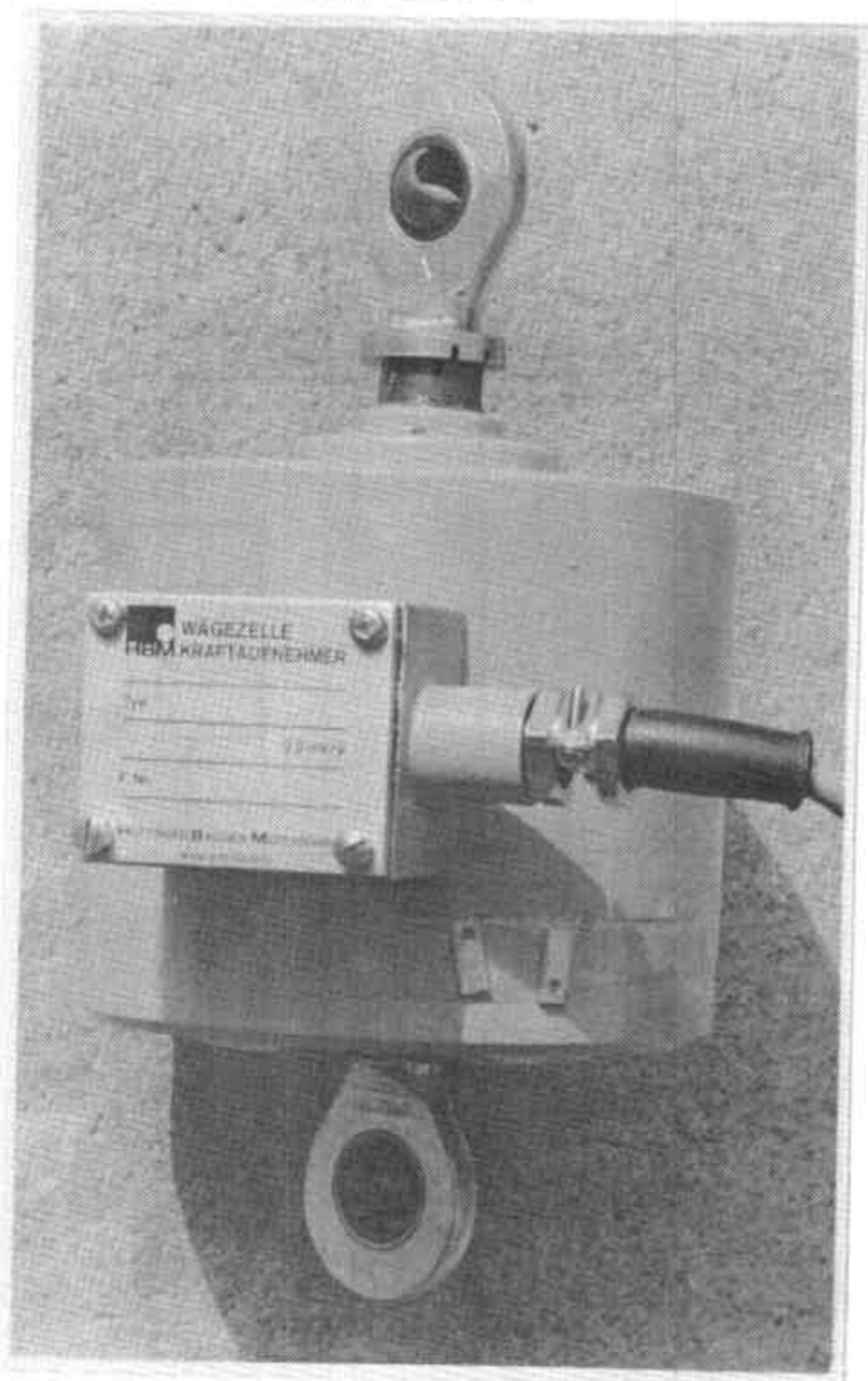
Table 1

Type:	HBM	Z3H3
Maximum capacity		500 kg
Maximum number of verification scale intervals		3000
Minimum dead load		25 kg
Minimum verification scale interval		0.1 kg*
Cable length		3 m $\pm$ 0.1 m

---

\* 0.09 kg if more than one load cell of the pattern is used.

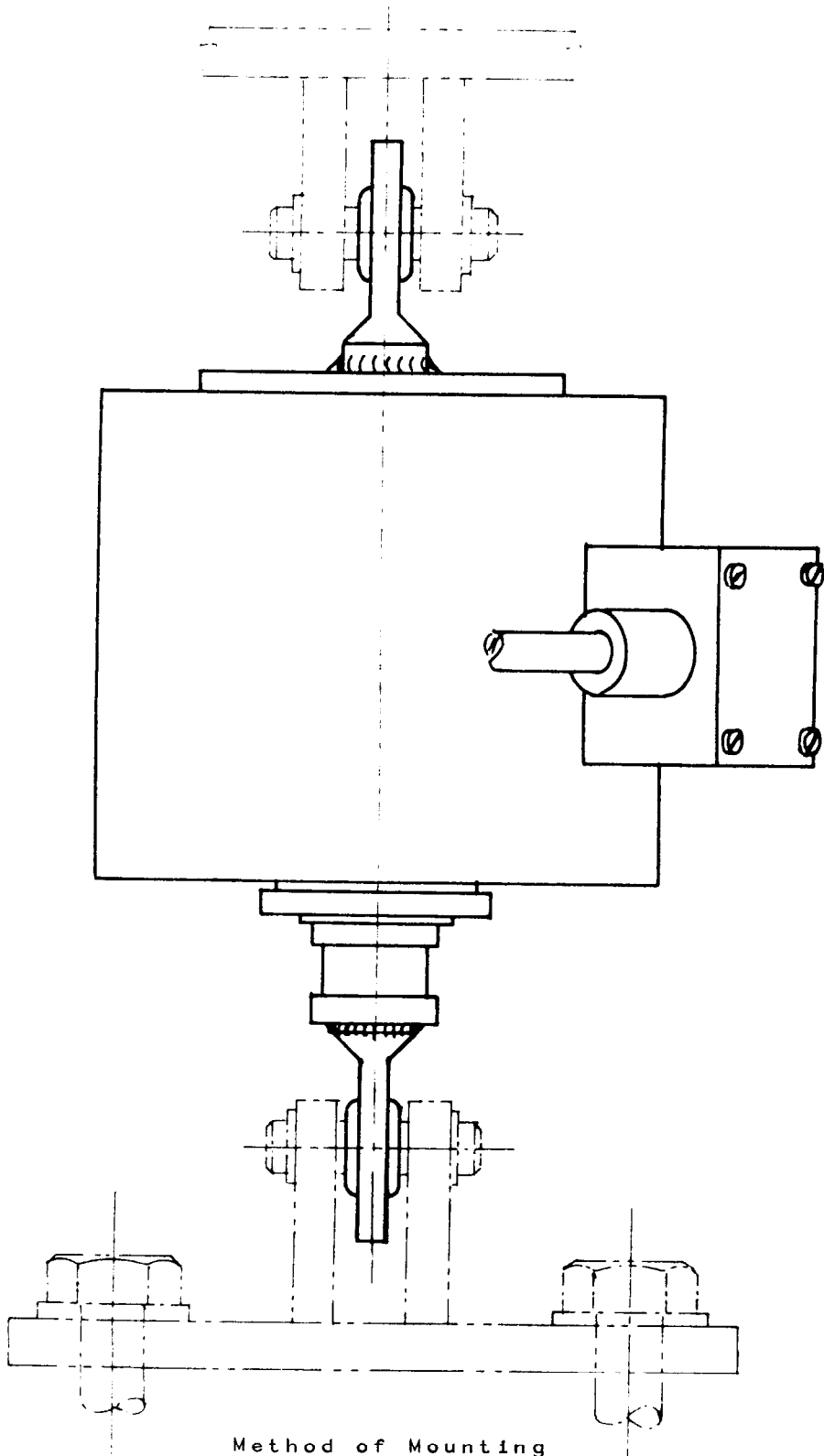
FIGURE S153 - 1



HBM Model Z3H3 Load Cell

25/5/83

FIGURE S153 - 2



Method of Mounting