



CANCELLED 0/3 FG
31-12-90

NATIONAL STANDARDS COMMISSION

WEIGHTS & MEASURES (PATTERNS OF INSTRUMENTS) REGULATIONS - REGULATION 9

SUPPLEMENTARY CERTIFICATE OF APPROVAL No S119

This is to certify that an approval has been granted by the Commission that the pattern and variants of the

Tedea Beam Load Cell Model 311F of 50 kg Capacity

submitted by J.W. Wedderburn & Sons Pty Ltd,
90 Parramatta Road,
Summer Hill, New South Wales, 2130,

are suitable for use for trade, when used in a Commission-approved weighing instrument.

The approval of the pattern and variants is subject to review on or after 1/12/85.

All instruments modified in accordance with this Certificate shall be marked with the approval number "NSC No S119", in addition to the approval number of the unmodified pattern.

Relevant drawings and specifications are lodged with the Commission.

Conditions of Approval

1. The number of scale intervals applicable to the whole instrument will be no greater than the number of verified scale intervals approved for the basework, or the load cell, or the headwork, whichever is the smallest.
2. The load cells to be used shall be subject to regular certification by the National Standards Commission.

Signed

J. (John) ...
Executive Director

Descriptive Advice

Pattern: approved 16/2/81

. Tedea Beam Load Cell Model 311F of 50 kg capacity.

Technical Schedule No S119 dated 11/5/81 describes the pattern.

Variants: approved 8/4/81

1. Of capacities 100 kg and 200 kg.

Technical Schedule No S119 Variation No 1 dated 11/5/81 describes Variant 1.

Filing Advice

Certificate of Approval No S119 dated 13/3/81 is superseded by this Certificate and may be destroyed.

Table 1 of Technical Schedule No S119 Variation No 1 dated 11/5/81 replaces Table 1 of the Technical Schedule dated 13/3/81.

11/5/81



NATIONAL STANDARDS COMMISSION

TECHNICAL SCHEDULE No S119

Pattern: Tedeo Beam Load Cell Model 311F of 50 kg capacity

Submittor: J.W. Wedderburn & Sons Pty Ltd,
90 Parramatta Road,
Summer Hill, New South Wales, 2130.

1. Description of Pattern

The pattern is a Tedeo Beam Load Cell Model 311F of 50 kg capacity (see Figure 1 and Table 1) assembled in a Commission-approved basework.

1.1 Method of mounting

1.1.1 Mounting is to be as shown in Figure 2.

1.1.2 An inspection port is to be provided in proximity to the load cell mounting.

1.2 Marking

The following is the minimum of data required to be permanently marked on the load cell:

Manufacturer's name
Model number
Serial number
Output in the form
Maximum rated capacity

mV/V

TABLE 1

Type	311F
Capacity	50 kg
Max No of Verification Scale Intervals	2500
Min Dead load	6.5 kg
Min Measuring range	20.0 kg
Max " "	50.0 kg

Tedea Series 311F Load Cell - approved capacities



NATIONAL STANDARDS COMMISSION

TECHNICAL SCHEDULE No S119

VARIATION No 1

Pattern: Teda Beam Load Cell Model 311F of 50 kg capacity.

Submitter: J.W. Wedderburn & Sons Pty Ltd,
90 Parramatta Road,
Summer Hill, New South Wales, 2130.

1. Description of Variant

1.1 Variant 1

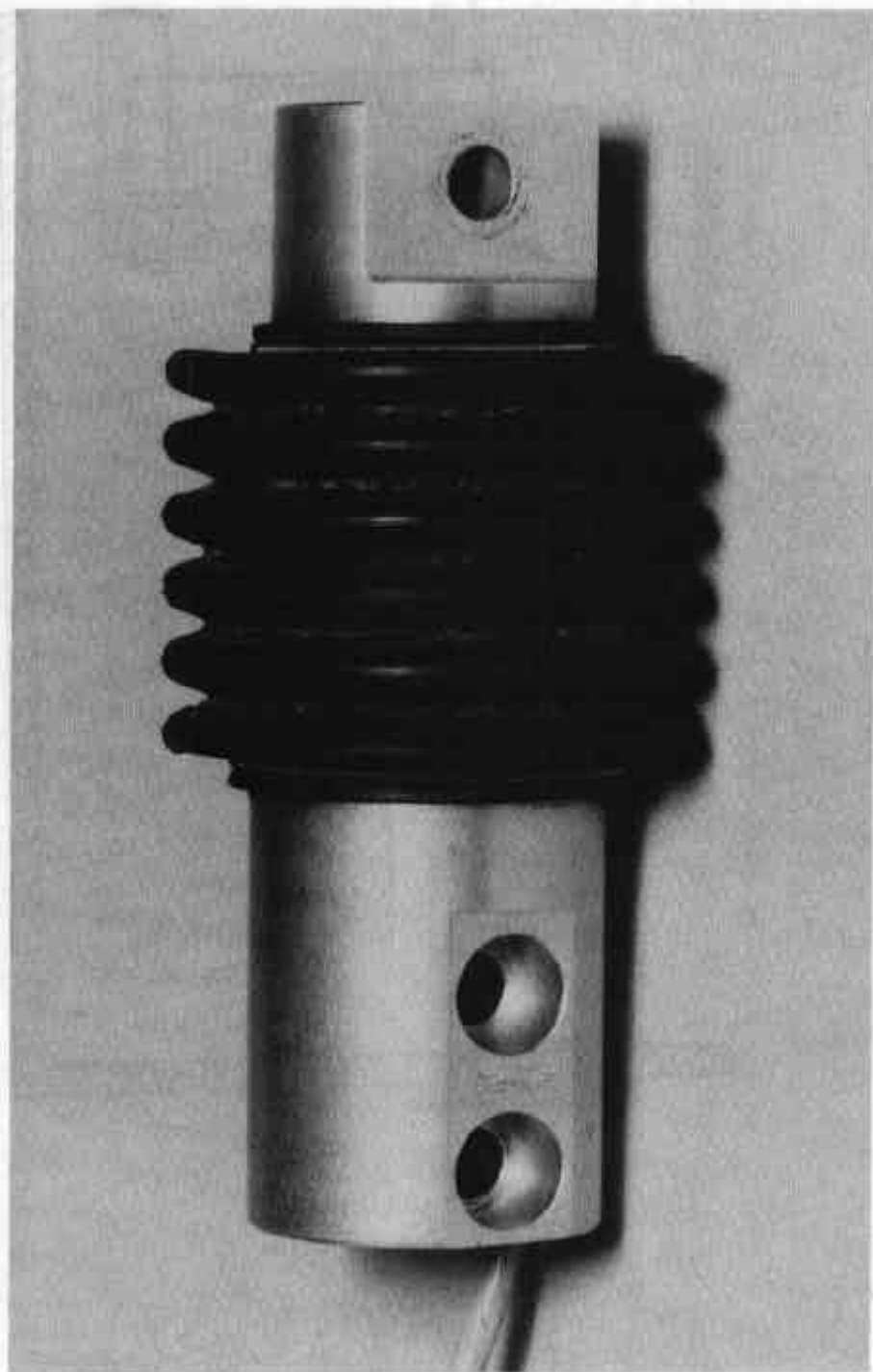
Of capacities 100 kg and 200 kg - See Table 1 below, which replaces Table 1 dated 13/3/81.

TABLE 1

Capacity	50 kg	100 kg	200 kg
Max. No. of verification scale intervals	2500	2500	2500
Min. Dead load	6.5 kg	9 kg	17 kg
Min. Measuring range	20 kg	40 kg	80 kg
Max. Measuring range	50 kg	100 kg	200 kg

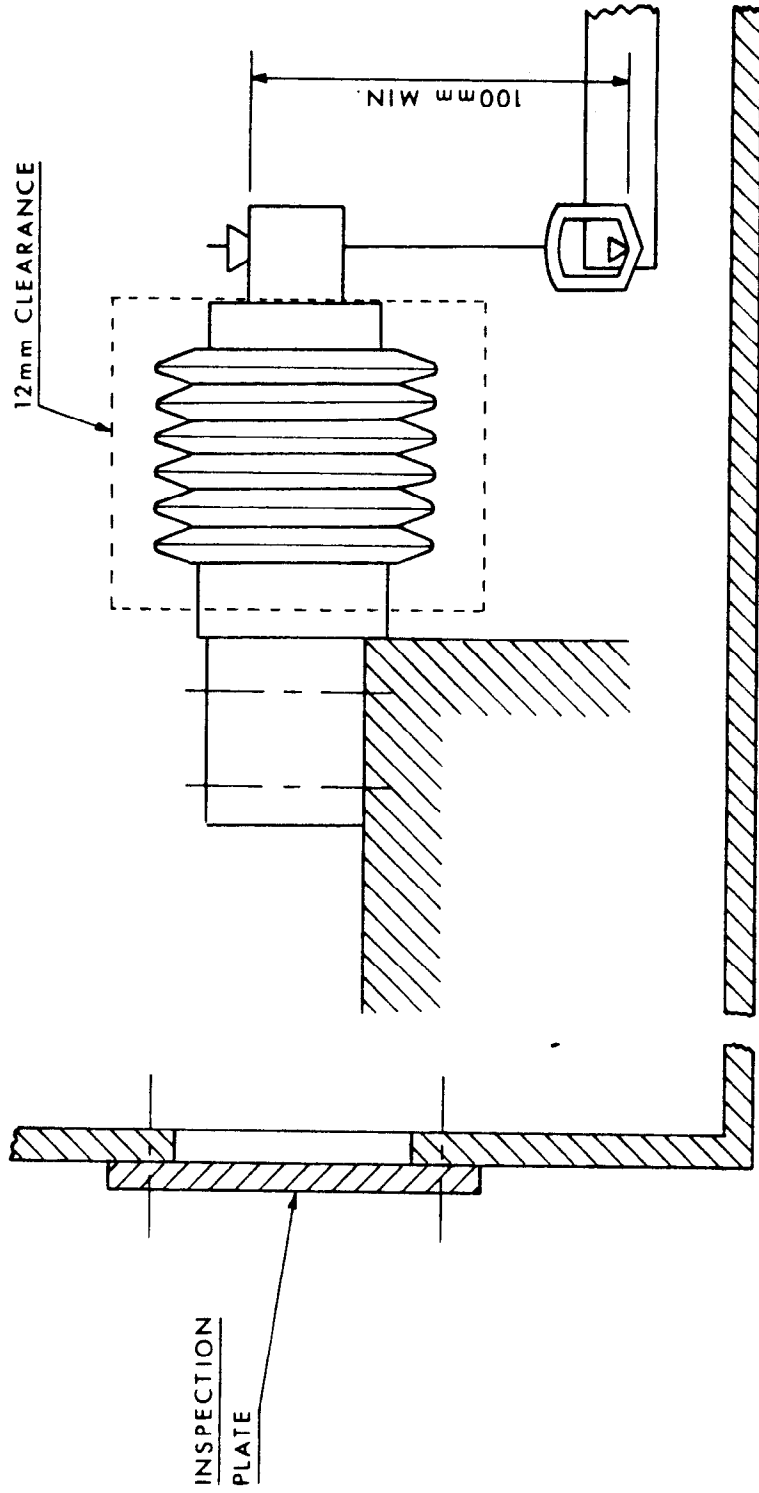
Teda Model 311F Load Cell - approved capacities

FIGURE S119 - 1



Tedea Load Cell Model 311F

FIGURE S119 - 2



Load Cell Mounting - Schematic Diagram