

# National Standards Commission



## Supplementary Certificate of Approval

**No S107A**

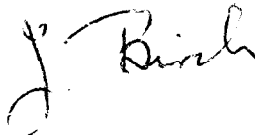
Issued under Regulation 9  
of the  
National Measurement (Patterns of Instruments) Regulations

This is to certify that an approval for use for trade has been granted in respect of the

Veeder-Root Model VR2091 Driveway Flowmeter Indicator

submitted by Veeder-Root (Australia) Pty Ltd  
82 Herald Street  
Cheltenham VIC 3192.

Signed and sealed by a person authorised under Regulation 9 of the National Measurement (Patterns of Instruments) Regulations to exercise the powers and functions of the Commission under this Regulation.



### CONDITIONS OF APPROVAL

This approval is subject to review on or after 1/3/96.

This approval expires in respect of new instruments on 1/3/97.

Instruments purporting to comply with this approval shall be marked NSC No S107A and only by persons authorised by the submittor.

Instruments incorporating a component purporting to comply with this approval shall be marked NSC No S107A in addition to the approval number of the instrument.

It is the submittor's responsibility to ensure that all instruments marked with this approval number are constructed as described in the drawings and specifications lodged with the Commission and with the relevant Certificate of Approval and Technical Schedule. Failure to comply with this Condition may attract penalties under Section 19B of the National Measurement Act and may result in cancellation or withdrawal of the approval, in accordance with the Commission's Document 106.

Auxiliary devices used with this instrument shall comply with the requirements of General Supplementary Certificate No S1/0.

The Commission reserves the right to examine any instrument or component of an instrument purporting to comply with this approval.

### DESCRIPTIVE ADVICE

Pattern: approved 14/2/91

. A Veeder-Root model VR2091 mechanical driveway flowmeter indicator.

Technical Schedule No S107A describes the pattern.

### FILING ADVICE

The documentation for this approval comprises:

Supplementary Certificate of Approval No S107A dated 24/4/91  
Technical Schedule No S107A dated 24/4/91 (incl. Test Procedure)  
Figure 1 dated 24/4/91



# National Standards Commission

## TECHNICAL SCHEDULE No S107A

**Pattern:** Veeder-Root Model VR2091 Driveway Flowmeter Indicator.

**Submittor:** Veeder-Root (Australia) Pty Ltd  
82 Herald Street  
Cheltenham VIC 3192.

### 1. Description of Pattern

The pattern is a Veeder-Root model VR2091 mechanical price-computing indicator for use in compatible Commission-approved attendant-operated or locally-authorized driveway flowmeters. Instruments may be as shown in Figure 1 or with small digits on the "dollar" price wheels.

#### 1.1 Performance Limit

The indicator's performance is limited by the speed of the right-hand price wheel which shall not exceed 150 revs/min. This can be checked by the following formula:

$$\frac{\text{litres/min} \times \text{cents/litre}}{\text{number of cents/rev of right-hand price wheel}} \leq 150 \text{ revs/min}$$

#### 1.2 Indicator Display

The indicator uses 3 separate analogue displays which indicate the price, volume and unit price respectively.

Price	Up to \$999.99 in \$0.01 increments
Volume	Up to 999.9 L in 0.1 L increments
Unit price	Up to 299.9 c/L in 0.1 c increments
Totaliser	Up to 9999999.9 L in 0.1 L increments and Up to \$999999.9 in 0.1\$ increments

#### 1.3 Unit Price Setting

Unit price setting is by means of change-gear levers located inside the computer housing.

#### 1.4 Verification Provision

Provision is made for a verification mark to be applied.

## 1.5 Markings

Instruments are marked with the following data, together in one location:

Manufacturer's name or mark

Model number

Serial number \*

Approval number

NSC No S107A

- \* The serial number may be located separately from the other markings.

## TEST PROCEDURE

Instruments shall be tested in conjunction with any tests specified in the approval documentation for the instrument to which the pattern is connected, as appropriate, and in accordance with any relevant tests specified in the Inspector's Handbook.

The maximum permissible errors applicable are those applicable to the system to which the instrument approved herein is fitted, as stated in the approval documentation for the system.

Refer to the formula in the description of the pattern to check the speed of the right-hand price wheel.

# National Standards Commission



## NOTIFICATION OF CHANGE

### SUPPLEMENTARY CERTIFICATE OF APPROVAL No S107A

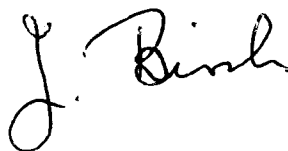
#### CHANGE No 1

The following changes are made to the approval documentation for the

Veeder-Root Model VR2091 Driveway Flowmeter Indicator

submitted by Veeder-Root (Australia) Pty Ltd  
82 Herald Street  
Cheltenham VIC 3192.

Signed and sealed by a person authorised under Regulation 9 of the National Measurement (Patterns of Instruments) Regulations to exercise the powers and functions of the Commission under this Regulation.

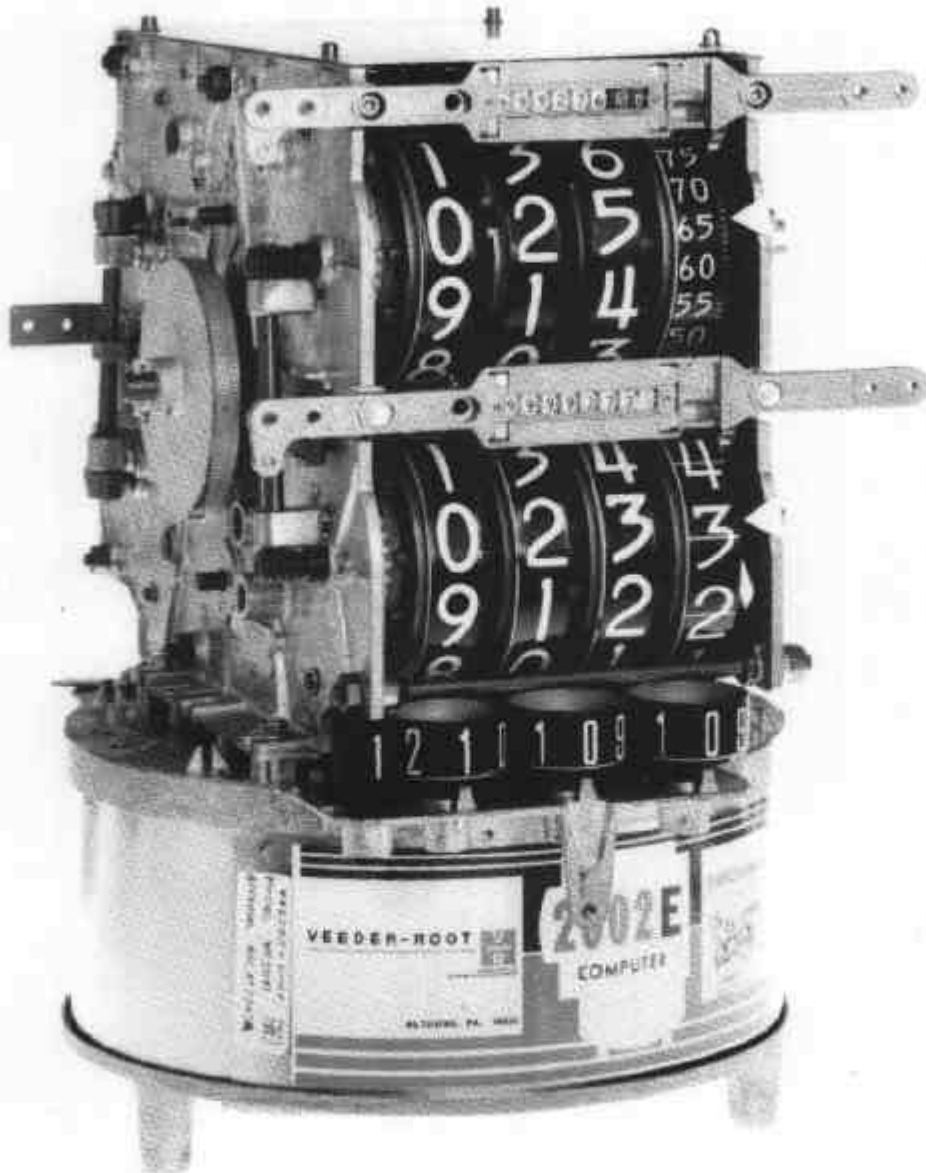


In Technical Schedule No S107A dated 24/4/91, clause 1.2 Indicator Display is amended by adding the following:

"The index on the price indicator is clearly visible, if necessary through a cut-out not less than 10 mm x 10 mm in the faceplate (Figure 2).

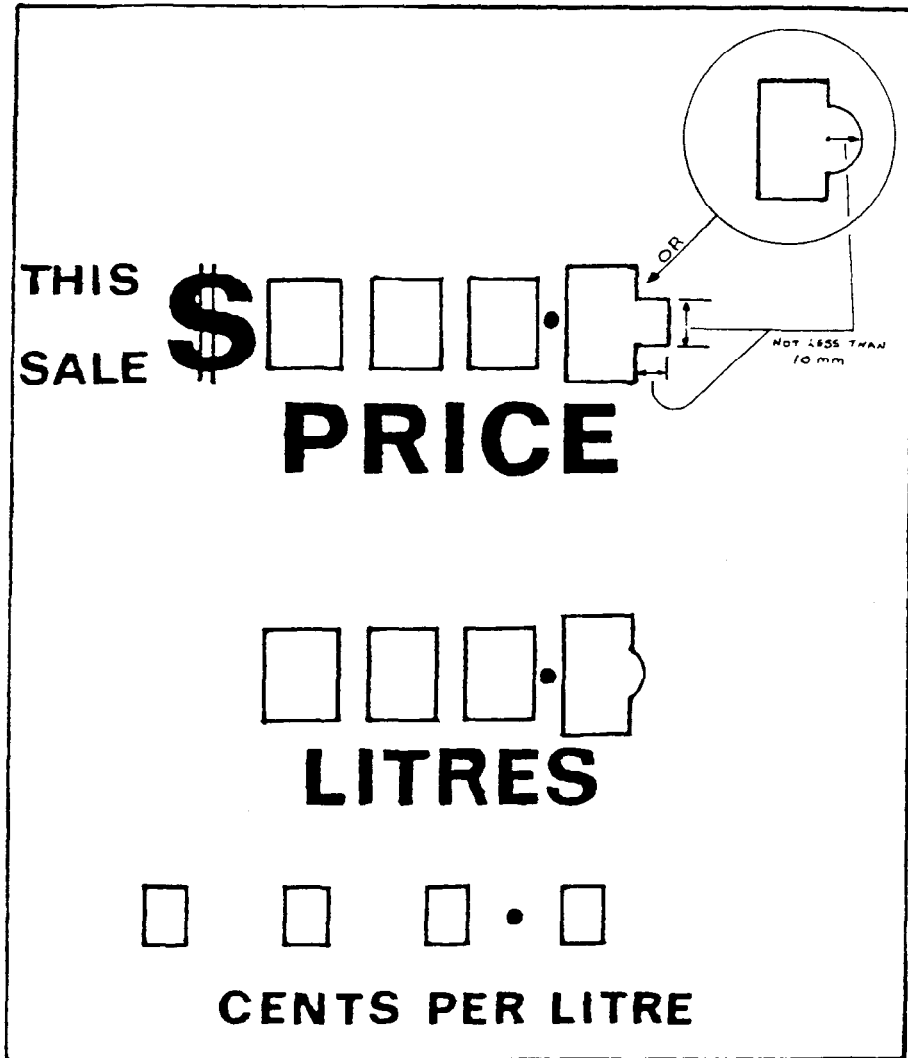
The index and the decimal point are positioned at mid-height of the digits."

FIGURE S107A - 1



Veeder-Root Model VR2091 Driveway Flowmeter Indicator

FIGURE S107A - 2



Sample Faceplate