



CANCELLED

0/3
31-12-90

NATIONAL STANDARDS COMMISSION

WEIGHTS & MEASURES (PATTERNS OF INSTRUMENTS) REGULATIONS

REGULATION 9

SUPPLEMENTARY CERTIFICATE OF APPROVAL No S105

This is to certify that an approval has been granted by the Commission that the pattern and variants of the

Avery Model 8782 Load Cell of 1600 kg Capacity

submitted by Avery Australia Limited,
3-5 Birmingham Avenue,
Villawood, New South Wales, 2163,

are suitable for use for trade.

The approval of the pattern and variants is subject to review on or after 30/5/86.

All instruments purporting to comply with this approval shall be marked NSC No S105.

Relevant drawings and specifications are lodged with the Commission.

Conditions of Approval

1. The number of scale intervals applicable to the whole instrument will be no greater than the number of verified scale intervals approved for the basework, or the load cell, or the headwork, whichever is the smallest.
2. The load cells to be used shall be subject to regular certification by the National Standards Commission.

Signed

Executive Director

Descriptive Advice

Pattern: approved 27/4/81

. Avery Model 8782 load cell of 1600 kg capacity

Variants: approved 27/4/81

1. Avery Model 8782 load cell of 750 kg capacity.

Technical Schedule No S105 dated 22/5/81 describes the pattern and variant 1.

22/5/81



NATIONAL STANDARDS COMMISSION

TECHNICAL SCHEDULE No S105

Pattern: Avery Model 8782 Load Cell of 1600 kg capacity

Submittor: Avery Australia Ltd,
3-5 Birmingham Avenue,
Villawood, New South Wales, 2163.

1. Description of Pattern

The pattern is an Avery Model 8782 Load Cell of 1600 kg capacity operated in tension (see Figure 1 and Table 1) assembled in a Commission approved basework.

2. Description of Variant

Avery Load Cell Model 8782 of 750 kg capacity, as described in Table 1.

2.1 Method of mounting

2.1.1 Mounting is as shown in Figure 2 with a minimum free length of 200 mm.

2.1.2 The load cell cable is terminated in an adequately constructed junction box (Figures 3 and 4).

2.2 Marking

The following is the minimum of data required to be marked on the load cell:

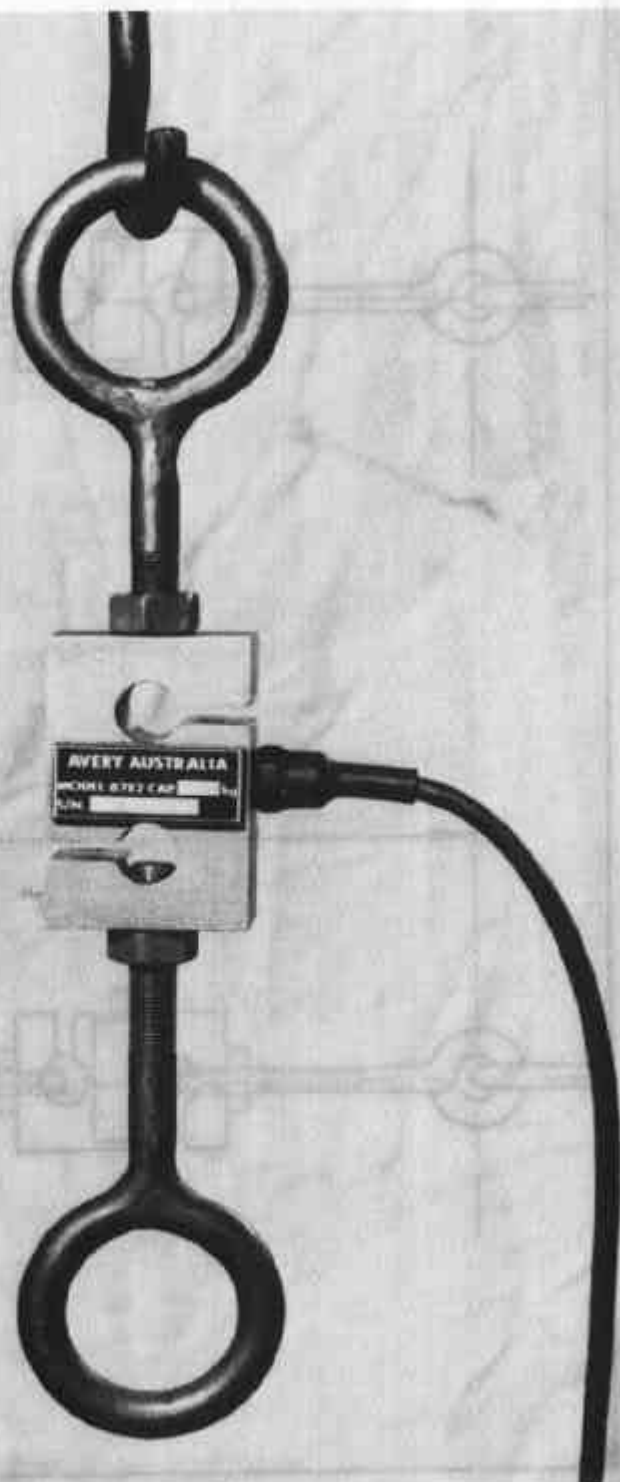
Manufacturer's name	
Model number	
Serial number	
Output in the form	mV/V
Maximum rated capacity	

TABLE 1

Type	8782	8782
Capacity	1600 kg	750 kg
Maximum number of verification scale intervals	2000	1500
Minimum dead load	160 kg	160 kg
Minimum measuring range	640 kg	300 kg
Maximum " "	1600 kg	750 kg

Avery Model 8782 Load Cell - approved capacities

FIGURE S105 - 1

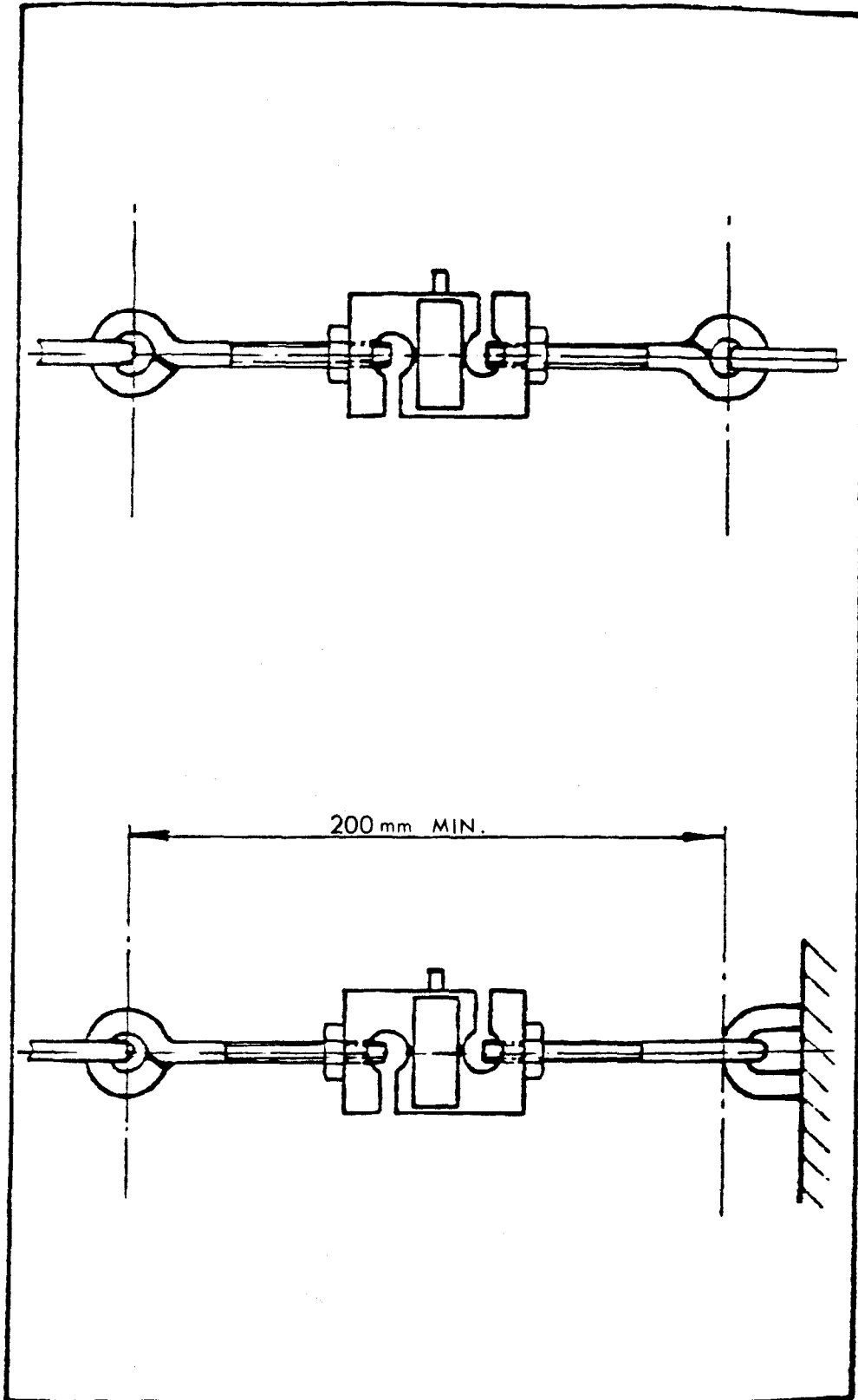


Avery Load Cell Model 8782

22/5/81

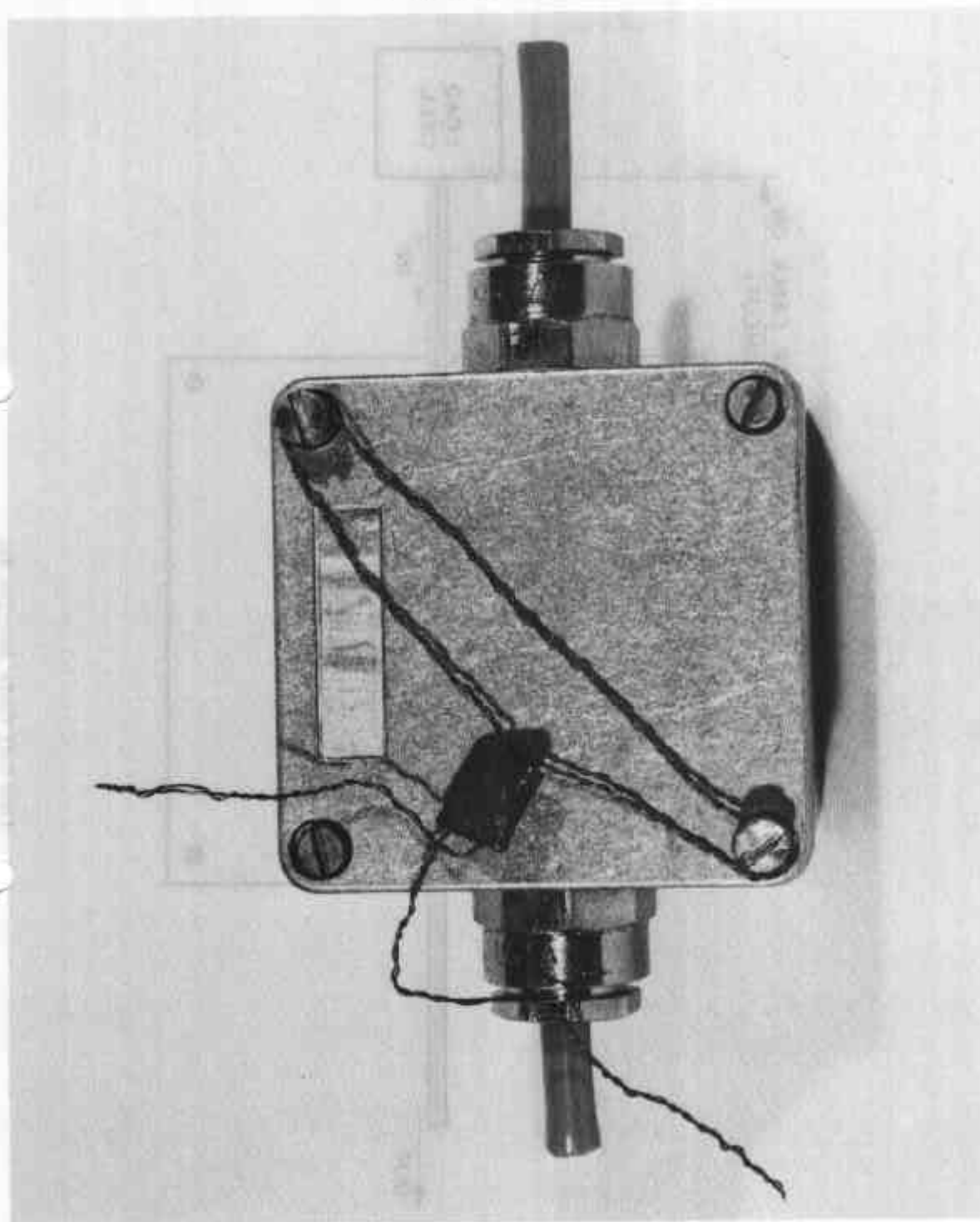
481722

FIGURE S105 - 2



Mounting of Load Cell

FIGURE S105 - 3

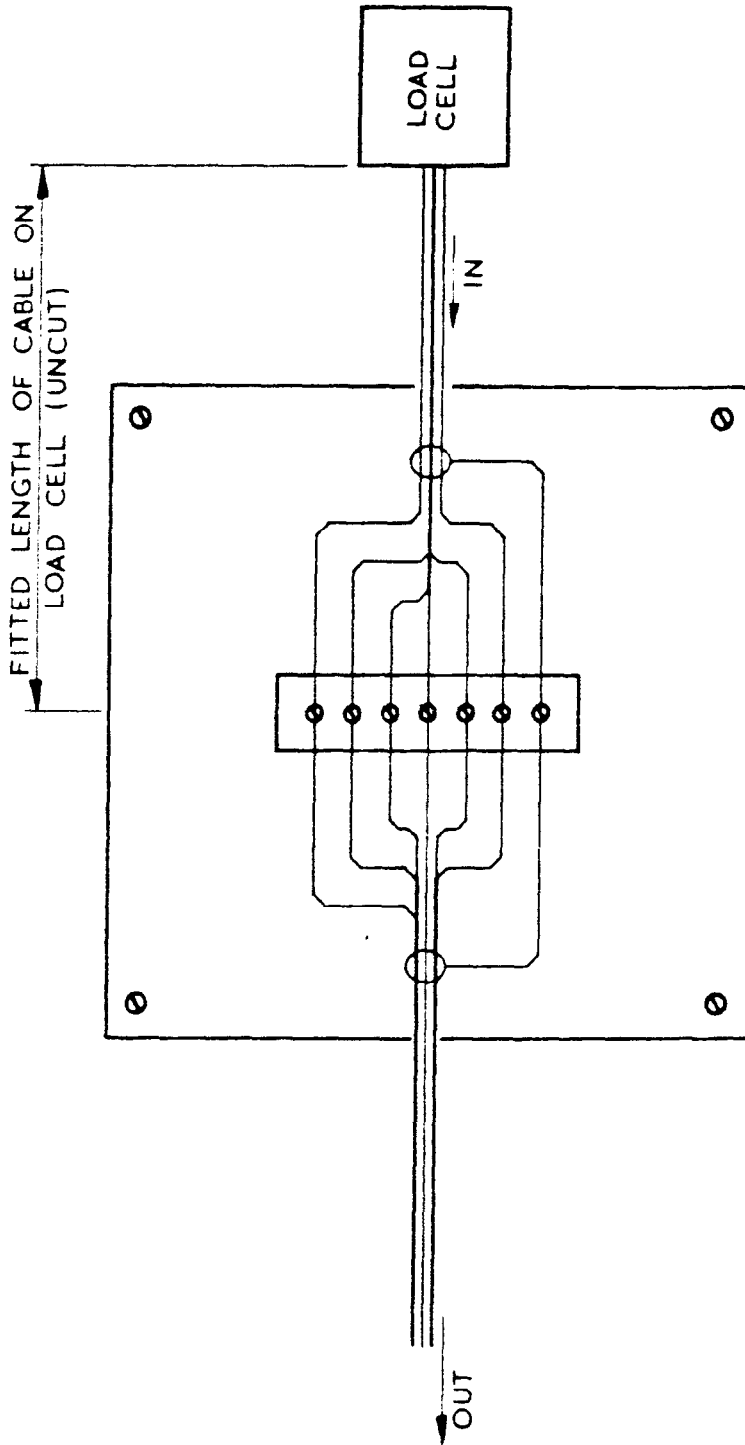


Load Cell Cable Junction Box

22/5/81

186/5/82

FIGURE S105 - 4



Load Cell Cable Junction Box