



CANCELLED

013  
31-12-90

COMMONWEALTH OF AUSTRALIA

NATIONAL STANDARDS COMMISSION

Weights and Measures  
(National Standards)  
Act 1960-1966

Weights and Measures  
(Patterns of Instruments)  
Regulations

## *Certificate of Approval*

CERTIFICATE NUMBER 8/7

This Certificate replaces Certificate No 8/7 dated 12th May 1972. \*

In respect of the pattern of

Dairy-Kold Farm Milk Tank and Variants.

Submitted and

manufactured by: M. J. Marshall Pty. Ltd.,  
92 Belmore Road,  
Riverwood,  
New South Wales. 2210.

This is to certify that the pattern and variants of the instrument illustrated and described in this Certificate have been examined by the National Standards Commission under the provisions of the abovementioned Regulations and have been approved as being suitable for use for trade.

The pattern and variants 1 to 4 were approved on 24th November 1966, and variants 5 to 8 were approved on 19th December 1967. Variant 9 was approved on 24th April 1972.

Approval was granted on condition that:

1. all instruments conforming to this Certificate:
  - (a) are appropriately marked NSC No 8/7; and

---

\* NOTE: Pages 3 and 4 dated 12th May 1972 and Figures 8/7 - 1 to 7 dated 28th May 1971 of the previous issue form part of the Certificate and must be retained.

(b) comply with the General Specifications for Measuring Instruments to be Used for Trade;

2. the approval of the pattern and variants 1 to 4 is limited to instruments with serial numbers less than 1799.

This Certificate comprises:

Pages 1 and 2 dated 9th June 1972.

Pages 3 and 4 dated 12th May 1972.

Figures 8/7 - 1 to 7 dated 28th May 1971.

Date of issue 9th June 1972.

Signed

A handwritten signature in black ink, appearing to read "Philip A. Maffio". The signature is fluid and cursive, with a long horizontal stroke at the end.

A person authorized by the Commission  
to sign Certificates under the  
abovementioned Regulations.

## † DESCRIPTION OF PATTERN

The pattern (see Figure 1) is of a farm milk tank of 700-gallons capacity.

It consists of a stainless steel tank of rectangular cross-section with slightly concave sides, 4 feet 5 inches wide, 10 feet 1 inch long, and 2 feet 11 inches in depth at the outlet, sheathed in a flat-sided outer casing of stainless steel; the cavity between is filled with insulating material (see Figure 2). The bottom of the tank, which is refrigerated, slopes towards the outlet, which is sealed by an internal plug. The tank is supported on eight adjustable legs.

Two bridges span the top of the tank; each slopes downward from the centre and has upturned flanges along each side. Each bridge carries an agitator motor; one bridge carries a level indicator which is located at one end of the bridge, and a dipstick in a tapered socket (see Figures 3 and 4).

A lid is hinged from the outside of each bridge and a lift-off lid is fitted between the two bridges.

The liquid level at capacity is not less than  $1\frac{1}{2}$  inches from the brim of the tank.

## DESCRIPTION OF VARIANTS

†1. In other capacities, namely:

<u>Capacity</u>	<u>Width</u> (± 1 inch)		<u>Maximum</u> <u>Length</u>		<u>Maximum</u> <u>Depth at</u> <u>Outlet</u>		<u>Number</u> <u>of Legs</u>
gallons	ft	in	ft	in	ft	in	
201 to 250	3	5	6	0	3	0	4
250 to 500	4	6	7	0	3	0	4
501 to 600	4	6	9	0	3	0	6
*601 to 800	4	6	11	0	3	0	8

\* includes the pattern.

† See Condition of Approval No 2.

12/5/72

Tanks of 201 to 500-gallons capacity have only one bridge, which supports two hinged lids, and only one agitator motor.

- †2. Calibrated in pounds.
- †3. With a combined dial thermometer and thermostat located in one bridge.
- †4. With an external draincock instead of the internal plug.
- 5. With a bridge stiffened at each end by gussets located within the insulated space between the tank and the outer sheath (see Figures 5, 6 and 7) and in other capacities, namely:

<u>Capacity</u>	<u>Width</u> (± 1 inch)		<u>Maximum</u> <u>Length</u>		<u>Maximum</u> <u>Depth at</u> <u>Outlet</u>		<u>Number</u> <u>of Legs</u>
gallons	ft	in	ft	in	ft	in	
250 to 500	4	6	7	0	3	0	4
501 to 600	5	4	11	9	3	6	6
601 to 850	5	4	11	9	3	6	8
851 to 1000	5	8	10	10	3	6	8
1001 to 1100	5	8	13	6	3	6	8

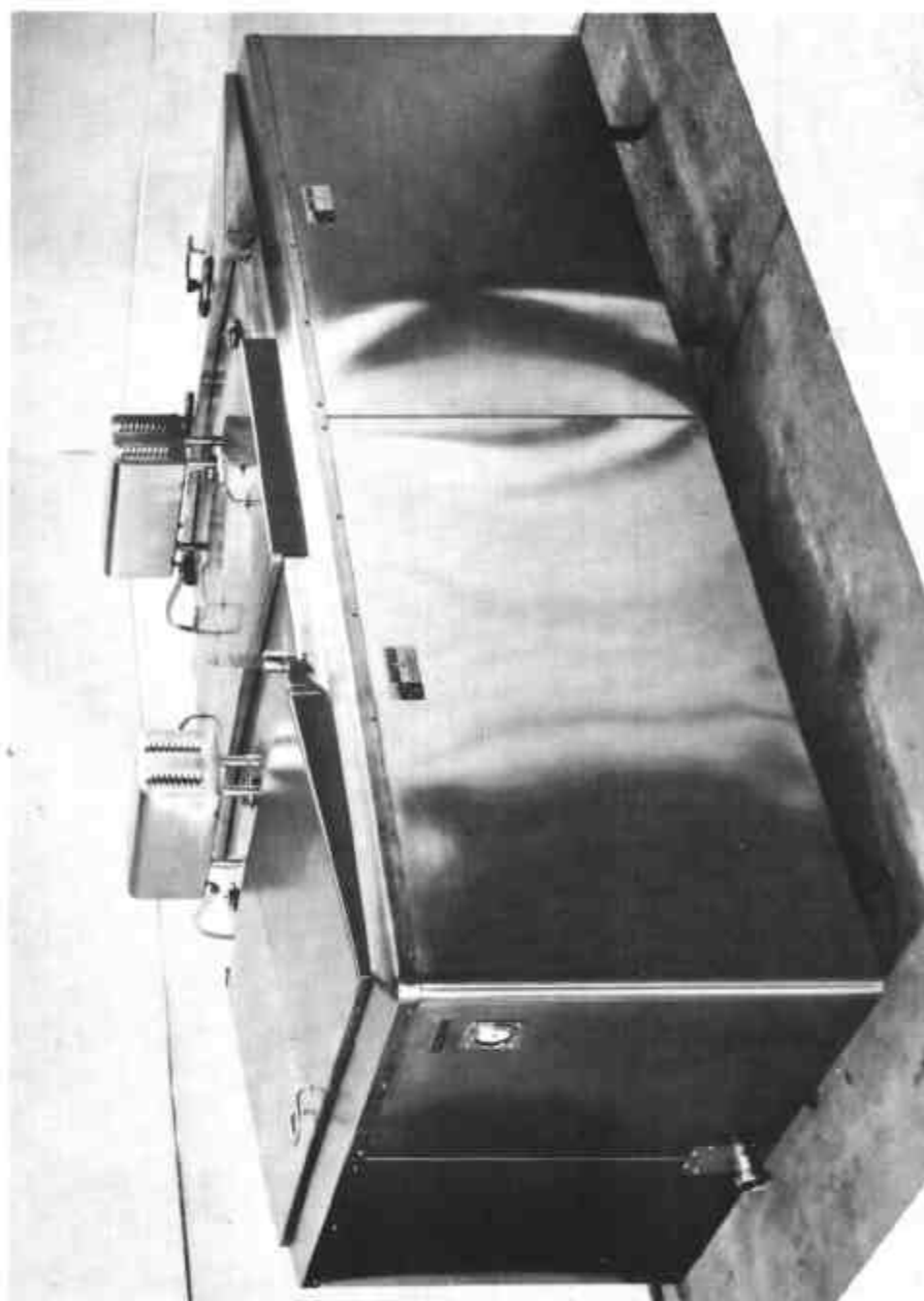
Tanks of 250 to 500-gallons capacity have only one bridge, which supports two hinged lids, and only one agitator motor.

- 6. Variant 5 calibrated in pounds.
- 7. Variants 5 or 6 with a combined dial thermometer and thermostat located in one bridge.
- 8. Variants 5, 6 or 7 with an external draincock instead of the internal plug.
- 9. Variants 5, 6, 7 or 8 with tanks of 250 to 560-gallons capacity having only one bridge.

---

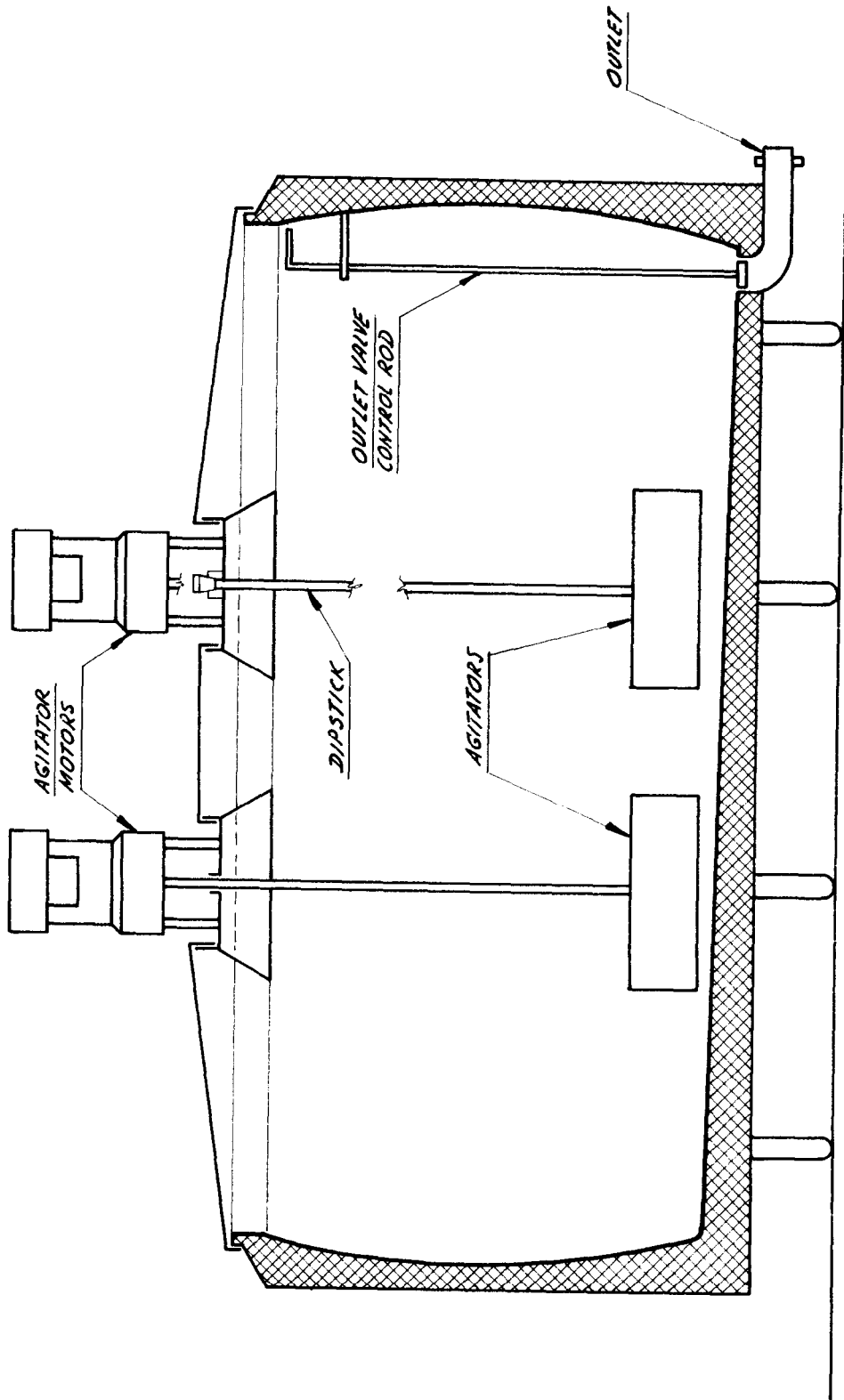
† See Condition of Approval No 2.

FIGURE 8/7 - 1



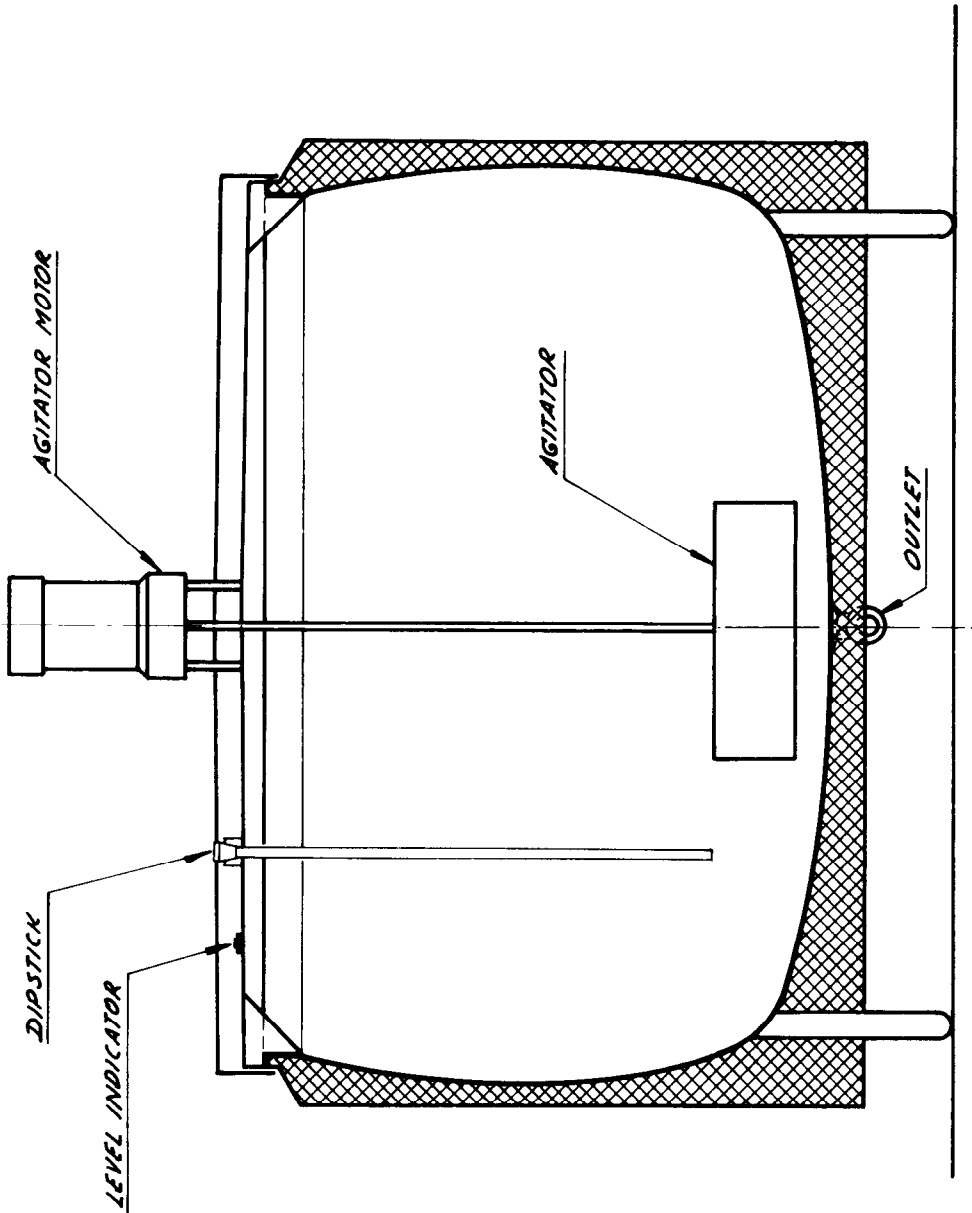
Dairy-Kold Farm Milk Tank — 700 Gallons Capacity

FIGURE 8/7 - 2



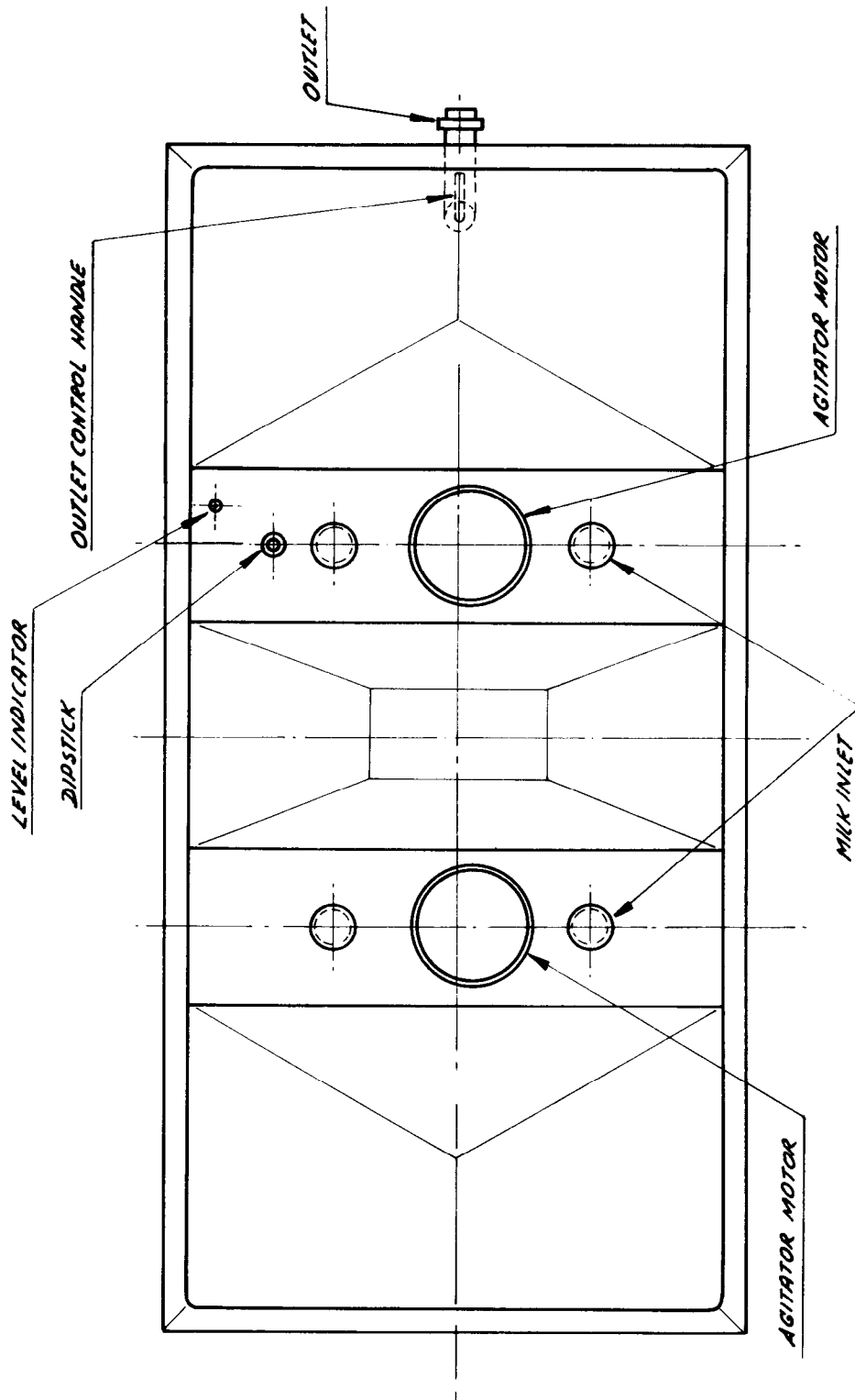
Dairy-Kold Farm Milk Tank — Cross-sectional Elevation — Side

FIGURE 8/7 - 3



Dairy-Kold Farm Milk Tank — Cross-sectional Elevation — End

FIGURE 8/7 - 4



Dairy-Kold Farm Milk Tank — Plan View

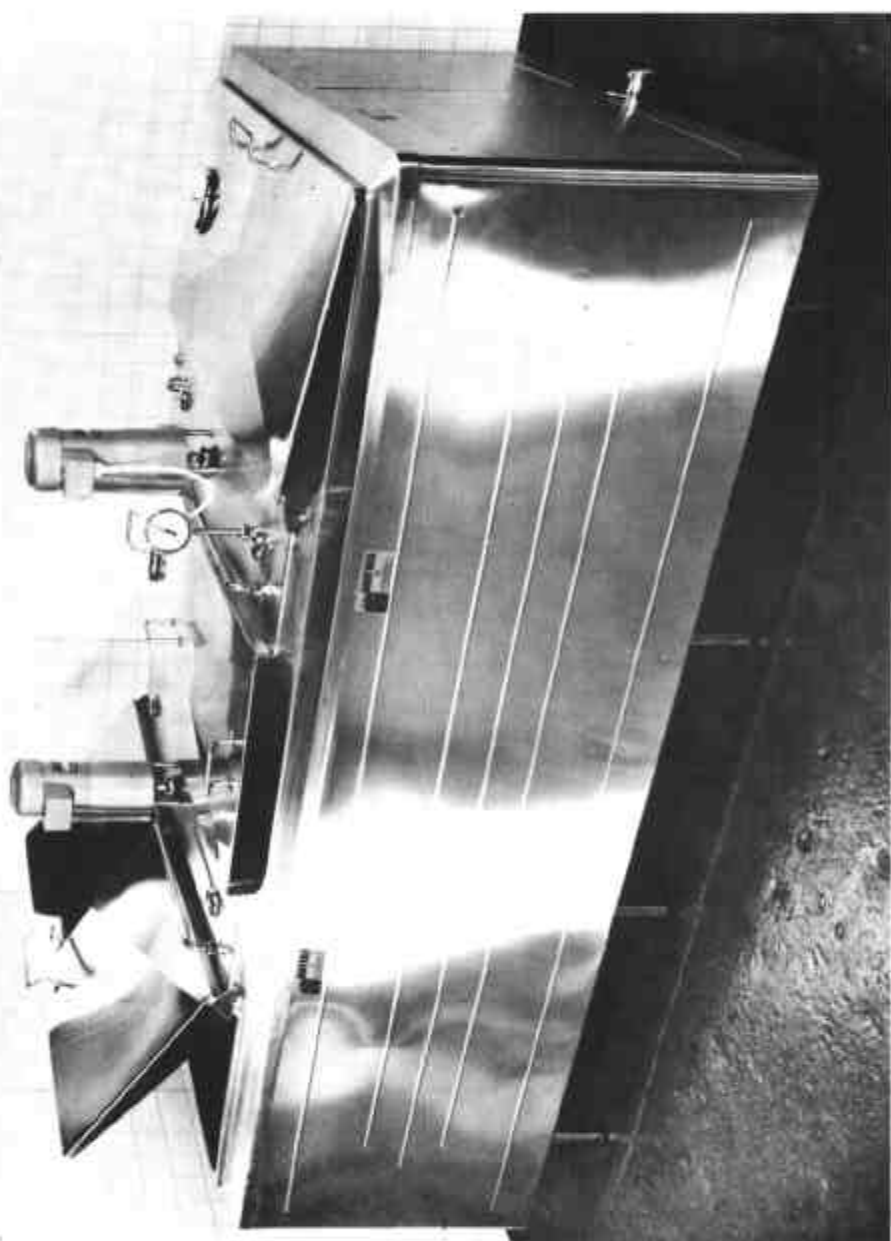


FIGURE 8/7 - 5



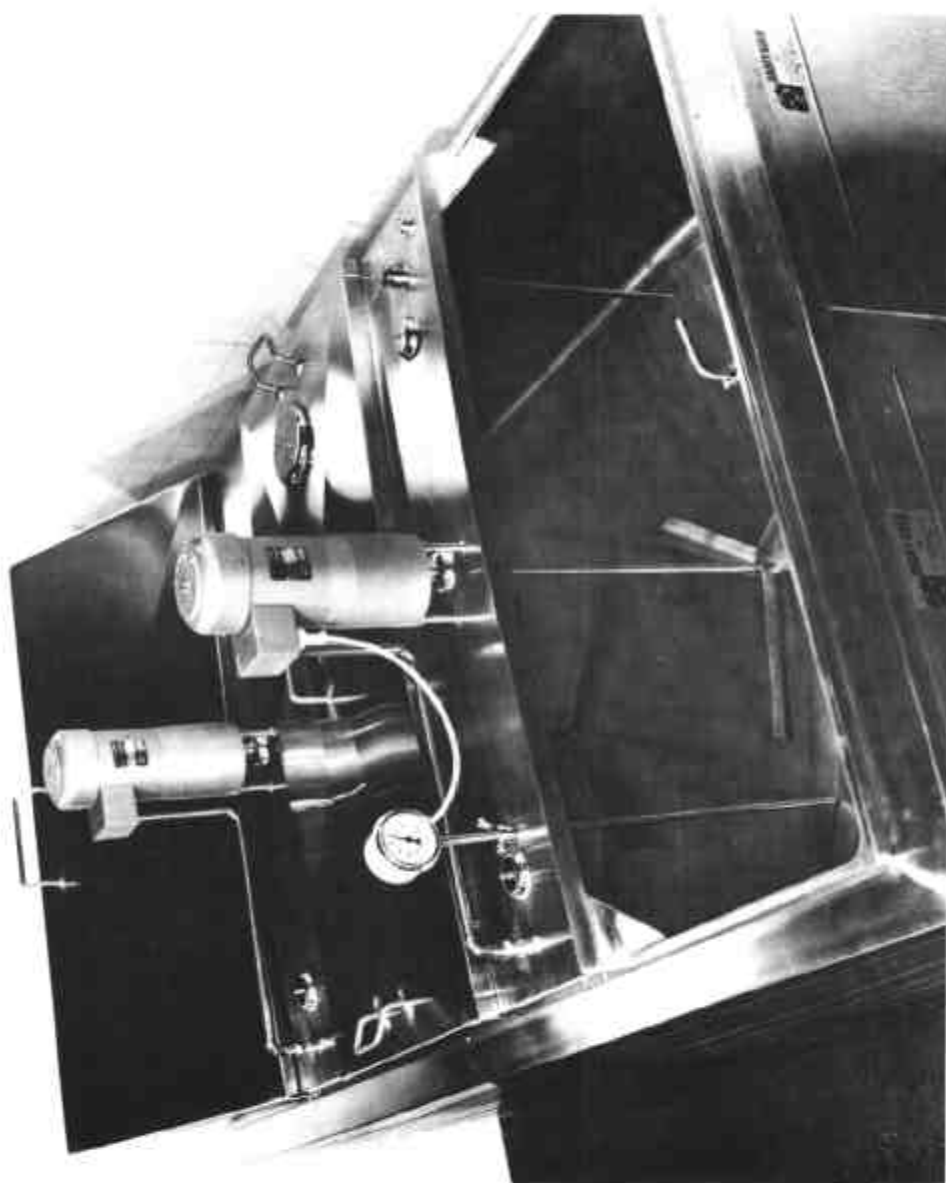
Dairy-Kold Farm Milk Tank — Bridge-stiffening Gussets  
28/5/71

FIGURE 8/7 - 6



Dairy-Kold Farm Milk Tank — Bridge Stiffened by Gussets

FIGURE 8/7 - 7



Dairy-Kold Farm Milk Tank — One Lid Removed