

CANCELLED

0/3
31-12-90



Weights and Measures
(National Standards)
Act 1960-1966

Weights and Measures
(Patterns of Instruments)
Regulations

COMMONWEALTH OF AUSTRALIA

NATIONAL STANDARDS COMMISSION

Certificate of Approval

CERTIFICATE NUMBER 8/6

This Certificate replaces Certificate No 8/6 dated 17th June, 1971. *

In respect of the pattern of

Way Farm Milk Tank and Variants.

Submitted and
manufactured by:

F. V. Way Industries Pty. Ltd.,
Colchester Road,
Croydon,
Victoria. 3136.

This is to certify that the pattern and variants of the instrument illustrated and described in this Certificate have been examined by the National Standards Commission under the provisions of the abovementioned Regulations and have been approved as being suitable for use for trade.

The pattern and variants 1 to 3 were approved on 12th December, 1967, and variant 4 was approved on 25th February, 1972.

Approval was granted on condition that all instruments made in conformity with this Certificate:

1. are appropriately marked NSC No 8/6; and

* NOTE: Figures 8/6 - 1 to 3 of the previous issue form part of the Certificate and must be retained.

6/3/72

Cont'd over

2. comply with the General Specifications for Measuring Instruments to be Used for Trade.

This Certificate comprises:

Pages 1 to 4 dated 6th March, 1972.

Figures 8/6 - 1 to 3 dated 17th June, 1971.

Figures 8/6 - 4 and 5 dated 6th March, 1972.

Date of issue 6th March, 1972.

Signed



A person authorized by the Commission
to sign Certificates under the
abovementioned Regulations.

DESCRIPTION OF PATTERN

The pattern (see Figure 1) is of a farm milk tank of 650 gallons capacity.

It consists of a vertical stainless steel cylinder (0.064-inch thick) of circular cross-section, 6 feet 0 inches internal diameter, sheathed in an outer casing of stainless steel 0.048-inch thick; the cavity between is filled with insulating material (see Figure 2). The bottom (0.080-inch thick) is in the form of an offset cone sloping to the outlet, which is located at right angles to the bridge. The outlet is sealed by an internal plug, the handle of which is secured by a cantilevered bracket fixed to the inside wall of the tank. The bottom of the tank is refrigerated. The tank is supported on four adjustable legs.

The bridge spanning the top of the tank (see Figure 3) has upturned flanges along each side. It carries an agitator motor and a dipstick in a tapered socket. A level indicator is located at the brim of the tank and attached by monel pop-rivets with the holes filled with solder. Supported from the bridge are two hinged lids.

DESCRIPTION OF VARIANTS

1. In other capacities, namely:

<u>Capacity</u>	<u>Inside Diameter</u>	
	(\pm 1 inch)	
gallons	ft	in
100 to 200	4	0
201 to 500	5	0
201 to 650	5	9
*300 to 650	6	0

* Includes the pattern.

2. Calibrated in pounds.
3. With the outlet located beneath the bridge, in which case the outlet plug handle passes through the bridge.
4. The pattern with a sloping slightly concave bottom (see Figures 4

and 5), the concavity being not less than $\frac{3}{8}$ inch in any 3-ft length. The bridge is stiffened by two $1\frac{1}{2}$ -inch outside diameter stainless steel tubes of 0.064-inch wall thickness with spacing pieces between the tubes and the bridge.

Tanks so made have the following capacities and diameters:

<u>Capacity</u>	<u>Inside Diameter</u>	
	(± 1 inch)	
gallons	ft	in
100 to 200	4	0
201 to 500	5	0
201 to 650	5	9

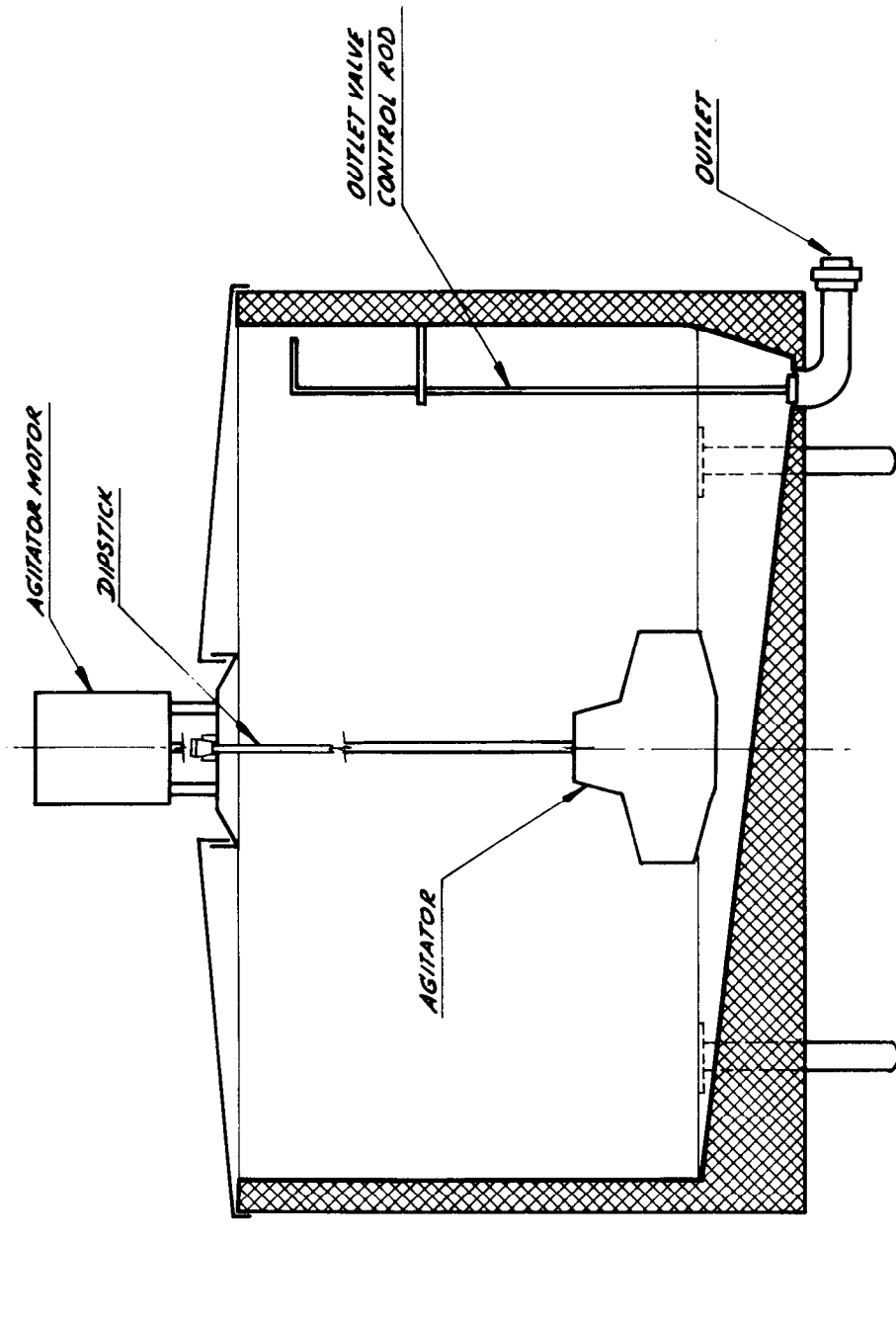
FIGURE 8/6 - 1



Way Farm Milk Tank — 650 Gallons Capacity

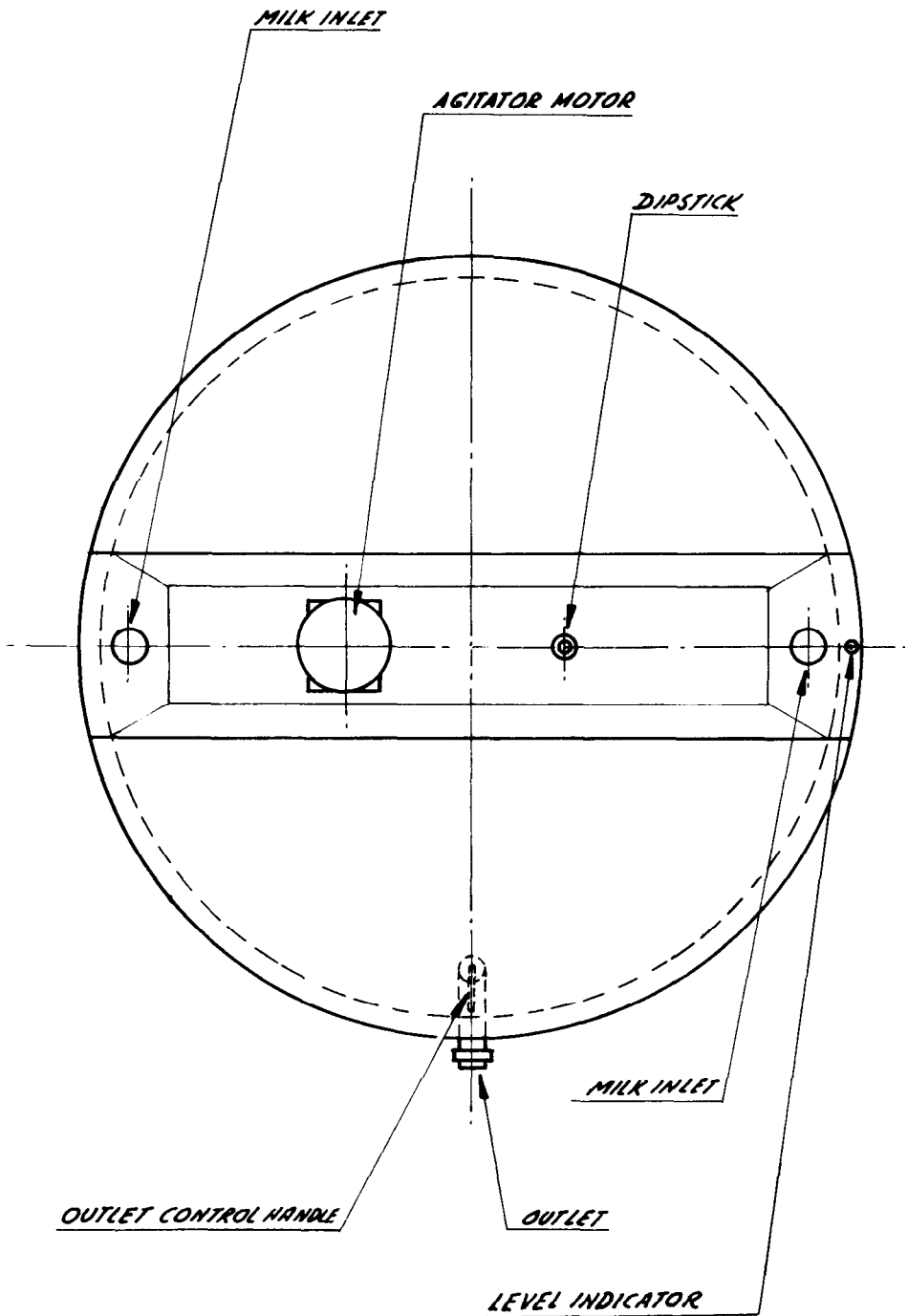
17/6/71

FIGURE 8/6 - 2



Way Farm Milk Tank — Cross-sectional Elevation

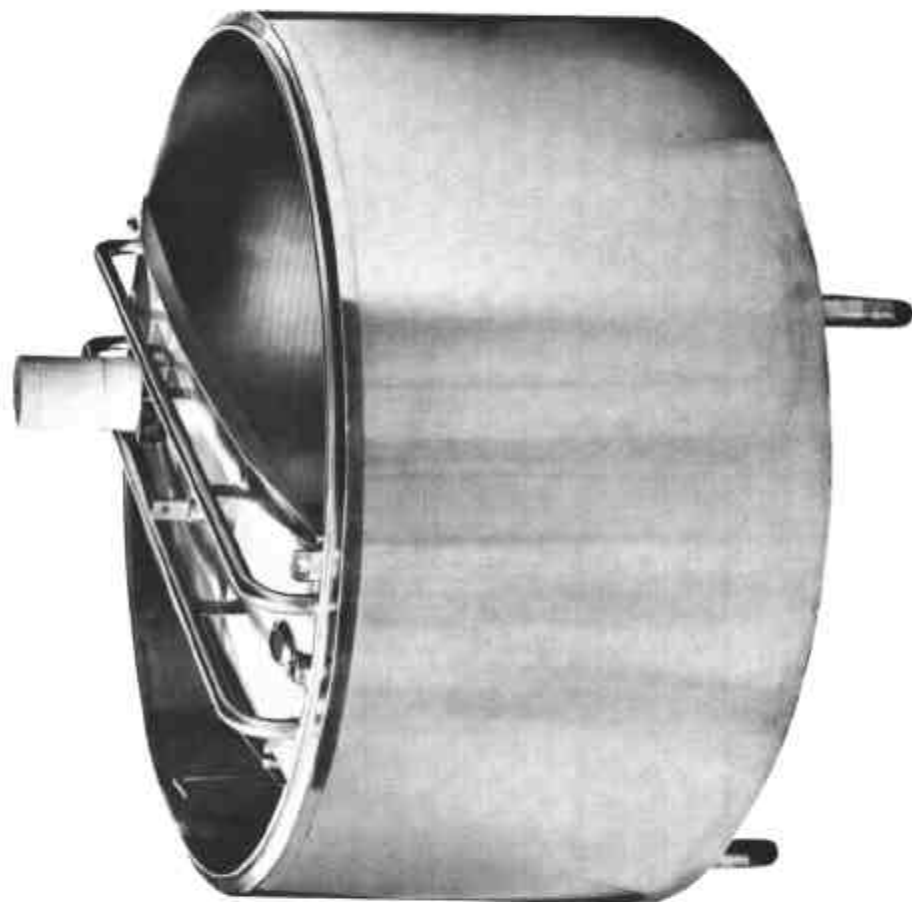
FIGURE 8/6 - 3



Way Farm Milk Tank — Plan View

17/6/71

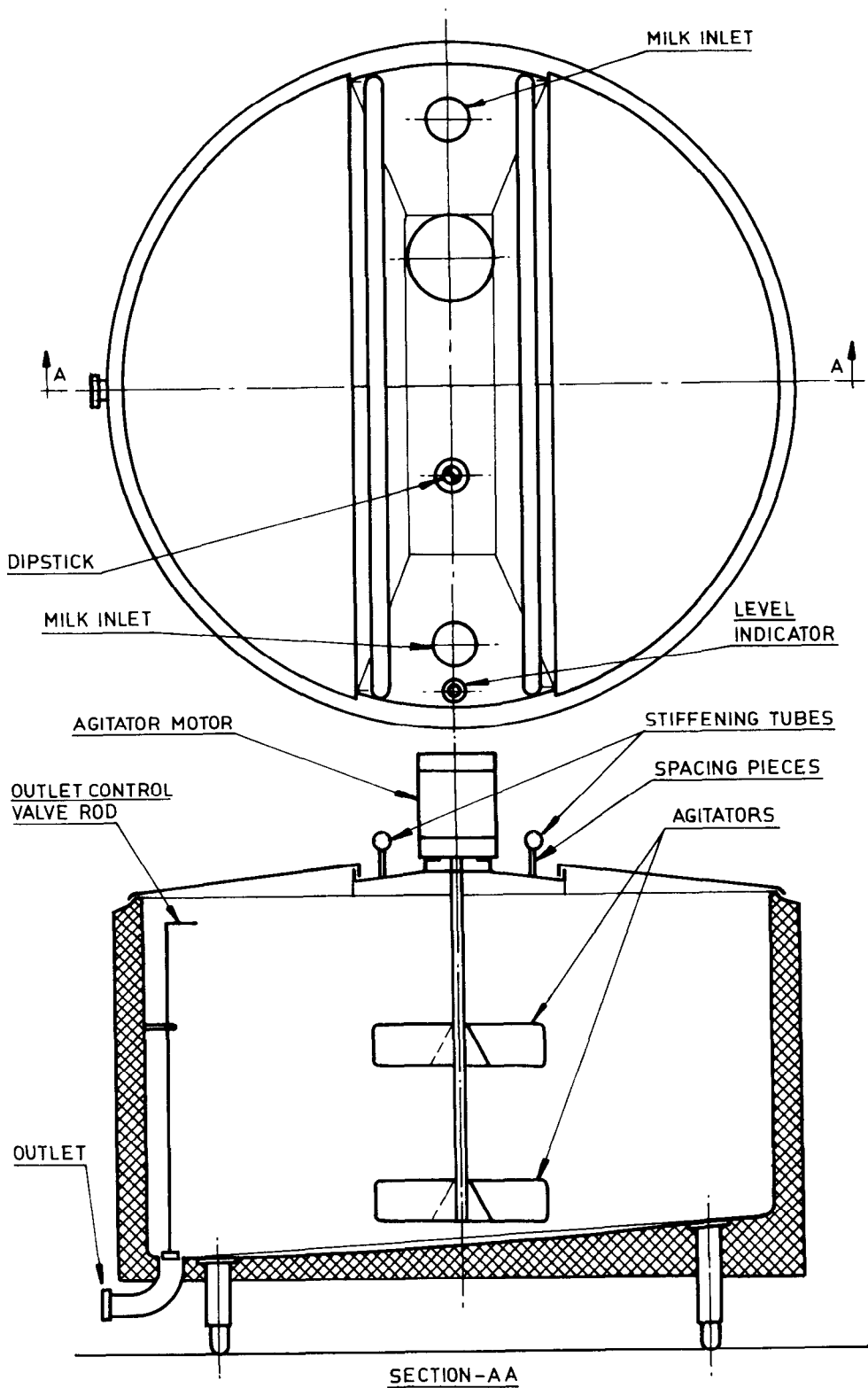
FIGURE 8/6 - 4



Modified Way Farm Milk Tank

6/3/72

FIGURE 8/6 - 5



Modified Way Farm Milk Tank

6/3/72