



Australian Government

**National Measurement
Institute**

12 Lyonpark Road, North Ryde NSW 2113

**Cancellation
Certificate of
Approval No 8/47**

Issued by the Chief Metrologist under Regulation 60
of the
National Measurement Regulations 1999

This is to certify that the approval for use for trade granted in NSC approval
8/47 in respect of the

Byford Model BMH 09 Milk Tank

submitted by Byford Fabrications Pty Ltd
now of Moama Business Park
Cobb Hwy Moama 2731

has been cancelled in respect of new instruments as from 1 May 2005.

Signed by a person authorised by the Chief Metrologist
to exercise his powers under Regulation 60 of the
National Measurement Regulations 1999.

A handwritten signature in black ink, appearing to be the initials "JFT" with a large, stylized flourish extending downwards from the letter "T".

National Standards Commission



Certificate of Approval

No 8/47

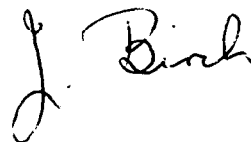
Issued under Regulation 9
of the
National Measurement (Patterns of Measuring Instruments) Regulations

This is to certify that an approval for use for trade has been granted in respect of the

Byford Model BMH 09 Farm Milk Tank

submitted by Byford Fabrications Pty Ltd
Murray Valley Highway
Strathmerton VIC 3641.

Signed and sealed by a person authorised under Regulation 9 of the National Measurement (Patterns of Measuring Instruments) Regulations to exercise the powers and functions of the Commission under this Regulation.



CONDITIONS OF APPROVAL

This approval is subject to review on or after 1/3/97.

This approval expires in respect of new instruments on 1/3/98.

Instruments purporting to comply with this approval shall be marked NSC No 8/47 and only by persons authorised by the submitter.

It is the submitter's responsibility to ensure that all instruments marked with this approval number are constructed as described in the documentation lodged with the Commission and with the relevant Certificate of Approval and Technical Schedule. Failure to comply with this Condition may attract penalties under Section 19B of the National Measurement Act and may result in cancellation or withdrawal of the approval, in accordance with the Commission's Document 106.

The Commission reserves the right to examine any instrument or component of an instrument purporting to comply with this approval.

DESCRIPTIVE ADVICE

Pattern: approved 28/2/92

- A Byford model BMH 09 refrigerated farm milk tank of 9000 L maximum capacity.

Variant: approved 28/2/92

1. Model BHM 09 in certain capacities as listed in Table 1.

Variant: approved 6/5/92

2. Model BFM 25 of 25 000 L capacity.

Technical Schedule No 8/47 describes the pattern and variants 1 and 2.

FILING ADVICE

The documentation for this approval comprises:

- Certificate of Approval No 8/47 dated 1/6/92
- Technical Schedule No 8/47 dated 1/6/92 (incl. Table 1 and Test Procedure)
- Figures 1 to 3 dated 1/6/92



National Standards Commission

TECHNICAL SCHEDULE No 8/47

Pattern: Byford Model BMH 09 Farm Milk Tank.

Submittor: Byford Fabrications Pty Ltd
Murray Valley Highway
Strathmerton VIC 3641.

1. Description of Pattern

A Byford model BMH 09 horizontal refrigerated farm milk tank of 9000 L capacity (Figure 1 and Table 1) incorporating a sight-gauge for the measurement of the volume.

1.1 Details

(i) The tank is a horizontal stainless steel cylinder sheathed in an outer casing of stainless steel; the cavity between is filled with insulating material. The bottom slopes towards the outlet control valve.

A milk-sampling valve is fitted to the tank.

(ii) A single sight-gauge mounted in a vertical position is located in the vicinity of the outlet valve (Figure 1) and comprises a transparent polycarbonate sight-tube fitted in a rigid support channel fixed to the side of the tank adjacent to a stainless steel scale.

The scale is graduated in 20 L increments.

(iii) Levelling is effected by means of 6 adjustable legs with reference to the datum level marks permanently marked on the tank. The volume represented by the datum level marks is marked on the sight-gauge scale. Each leg has provision for fixing the leg to the floor, and provision for a lead and wire seal to be attached, after levelling.

(iv) Provision is made for a CIP (clean-in-place) system for both the tank and the sight-gauge.

(v) Access for inspection is provided in the vicinity of the outlet valve.

1.2 Verification/Certification Provision

Provision is made for a verification/certification mark to be applied.

1.3 Markings

The following is marked on a nameplate permanently attached to the instrument in a clearly visible location:

Manufacturer's name or mark	
Model number	
Serial number	
NSC approval number	NSC No 8/47
Maximum capacity L
Year of manufacture	

In addition, the volume represented by the datum level marks shall be marked on the sight-gauge scale.

2. Description of Variants

2.1 Variant 1

Model BMH 09 in certain other capacities, and with up to 12 legs, as listed in Table 1.

TABLE 1

Maximum Capacity (litres)	Number of legs	Minimum Graduation Size (litres)
5 000	6	20
7 500	6	20
9 000	6	20
12 000	8	50
15 000	8	50
18 000	10	50
25 000	12	50

Approved Capacities

2.2 Variant 2

Model BFM 25 of 25 000 litres capacity with a minimum graduation size of 50 litres, and with 12 legs (Figures 2 and 3).

TEST PROCEDURE

Instruments should be tested in conjunction with any relevant tests specified in the Inspector's Handbook.

Maximum Permissible Error at Verification/Certification

The maximum permissible error for farm milk tanks incorporating a sight-gauge is ± 1 scale interval.



National Standards Commission

Notification of Change

Certificate of Approval No 8/47

Change No 1

The following changes are made to the approval documentation for

Byford Model BMH 09 Milk Tank

submitted by Byford Fabrications Pty Ltd
Murray Valley Highway
Strathmerton VIC 3641.

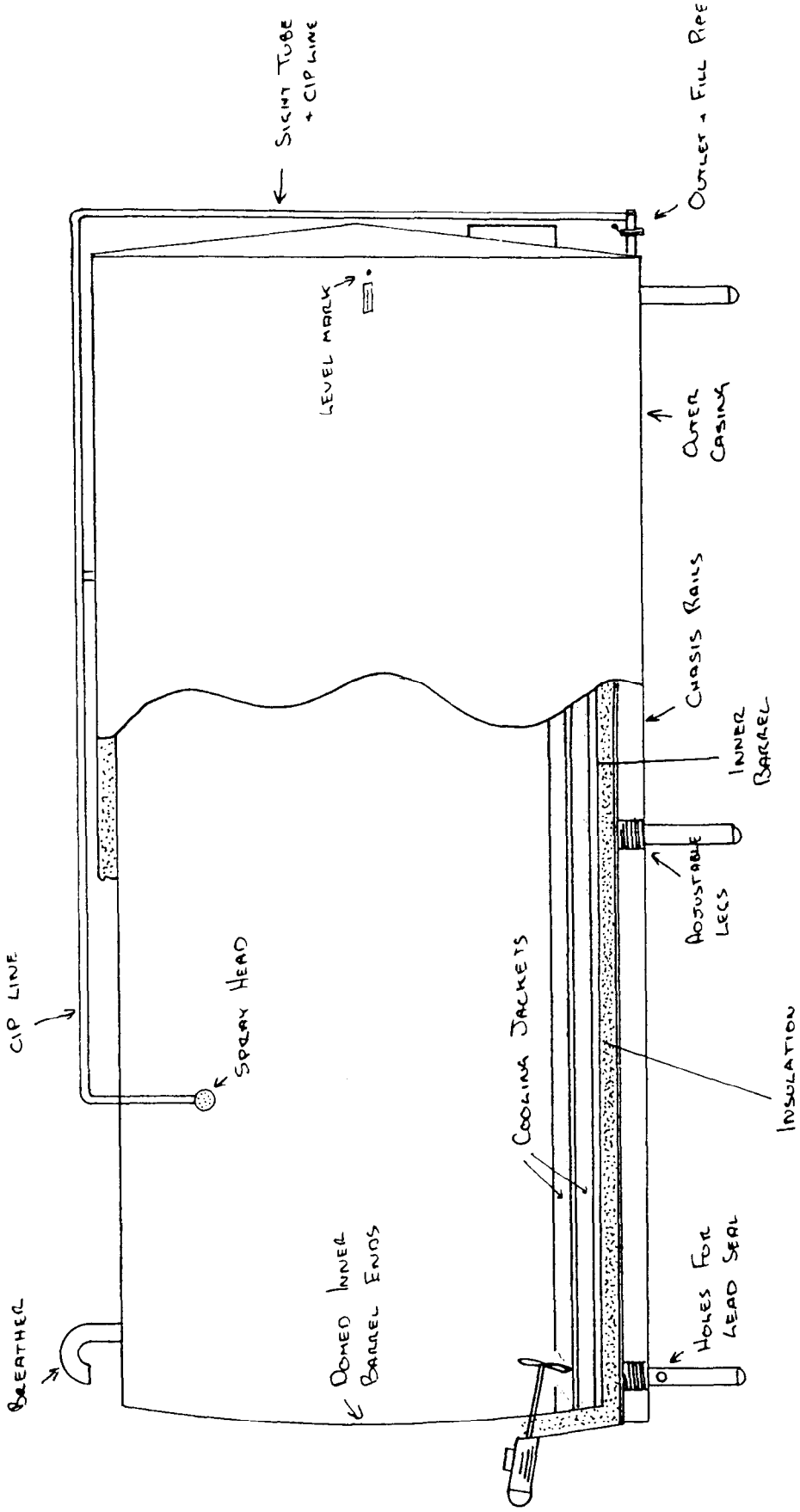
In Certificate of Approval No 8/47 dated 1 June 1992;

1. The Condition of Approval referring to the review of the approval should be amended to read:

"This approval becomes subject to review on 1 June 2002, and then every 5 years thereafter."
2. The Condition of Approval referring to the expiry of the approval should be deleted.

Signed and sealed by a person authorised under Regulation 9 of the National Measurement (Patterns of Measuring Instruments) Regulations to exercise the powers and functions of the Commission under this Regulation.

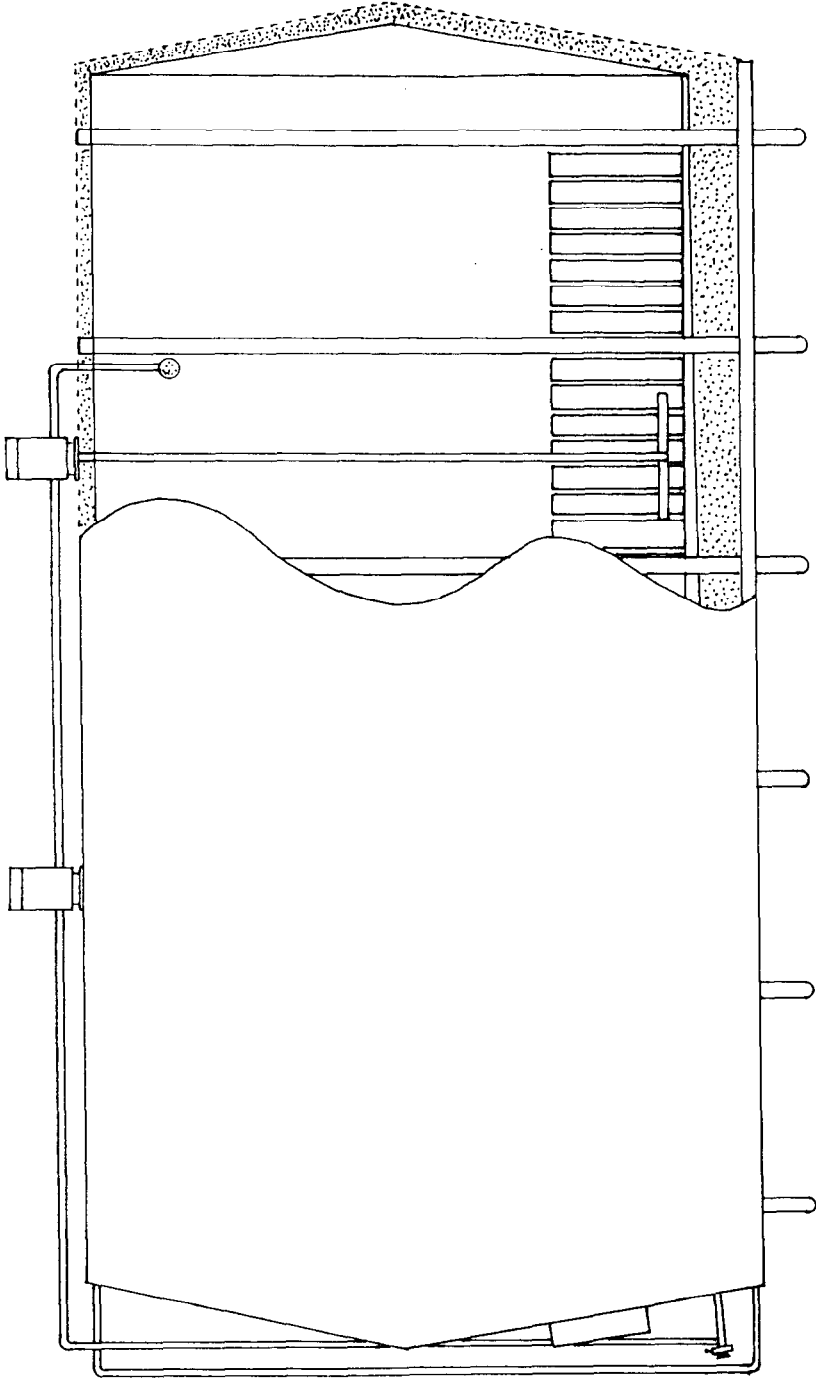
FIGURE 8/47 - 1



Byford Model BMH 09 Farm Milk Tank

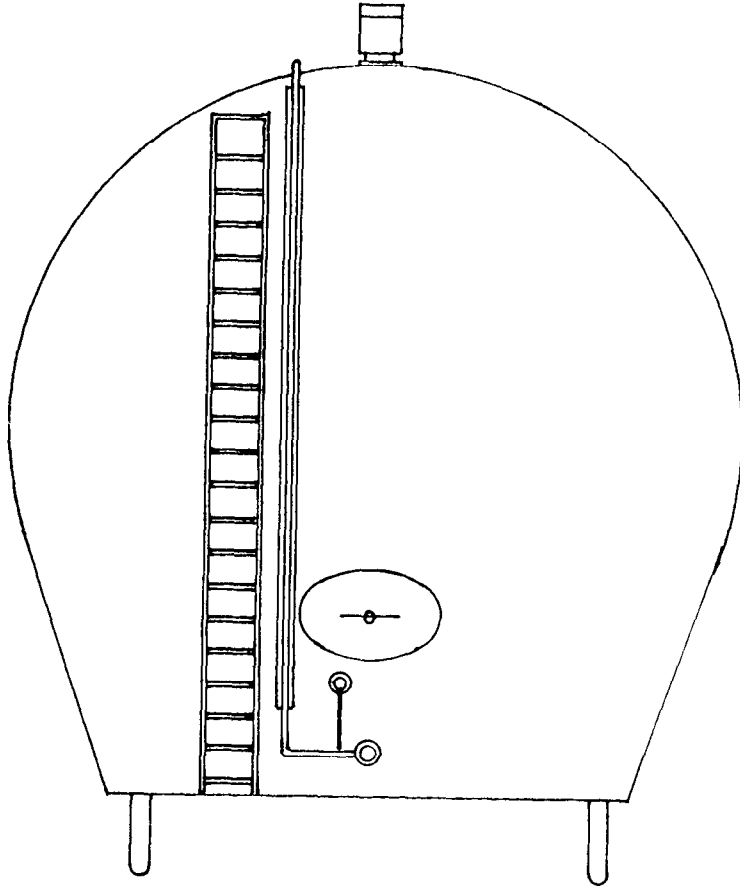
8/47
1/6/92

FIGURE 8/47 - 2



Model BFM 25 Farm Milk Tank

FIGURE 8/47 - 3



End View of Model BFM 25