

National Standards Commission



Certificate of Approval

No 8/39

Issued under Regulation 9
of the
National Measurement (Patterns of Instruments) Regulations

This is to certify that an approval for use for trade has been granted in respect of the

NDA Engineering Model FHT92 Mk III Farm Milk Tank

submitted by NDA Engineering Ltd
709 Te Rapa Road
Hamilton New Zealand.

Signed and sealed by a person authorised under Regulation 9 of the National Measurement (Patterns of Instruments) Regulations to exercise the powers and functions of the Commission under this Regulation.

A handwritten signature in black ink, appearing to read "J. Birch".

CONDITIONS OF APPROVAL

This approval is subject to review on or after 1/4/95.
This approval expires in respect of new instruments on 1/4/96.

Instruments purporting to comply with this approval shall be marked NSC No 8/39 and only by persons authorised by the submittor.

It is the submittor's responsibility to ensure that all instruments marked with this approval number are constructed as described in the drawings and specifications lodged with the Commission and with the relevant Certificate of Approval and Technical Schedule. Failure to comply with this Condition may attract penalties under Section 19B of the National Measurement Act and may result in cancellation or withdrawal of the approval, in accordance with the Commission's Document 106.

The Commission reserves the right to examine any instrument or component of an instrument purporting to comply with this approval.

Special:

Instruments purporting to comply with this approval shall conform with the relevant requirements of Australian Standard AS 1187-1977 for Refrigerated Farm Milk Tank-units.

DESCRIPTIVE ADVICE

Pattern: approved 13/3/90

- An NDA Engineering model FHT92 Mk III refrigerated farm milk tank of 5 050 L capacity.

Variant: approved 13/3/90

1. In other capacities as listed in Table 1.

Technical Schedule No 8/39 describes the pattern and variant 1.

FILING ADVICE

The documentation for this approval comprises:

- Certificate of Approval No 8/39 dated 25/6/90
- Technical Schedule No 8/39 dated 25/6/90 (Incl. Table 1 and Test Procedure)
- Figures 1 to 4 dated 25/6/90



National Standards Commission

TECHNICAL SCHEDULE No 8/39

Pattern: NDA Engineering Model FHT92 Mk III Farm Milk Tank.

Submittor: NDA Engineering Ltd
709 Te Rapa Road
Hamilton New Zealand.

1. Description of Pattern

An NDA Engineering model FHT92 Mk III refrigerated farm milk tank of 5 050 L capacity (Figure 1 and Table 1) incorporating a sight-gauge for indicating the volume.

1.1 Details

(i) The tank (Figures 2 and 3) is a vertical stainless steel cylinder sheathed in an outer casing of stainless steel; the cavity between is filled with insulating material. The bottom slopes towards the outlet control valve.

A milk-sampling valve is fitted to the tank.

(ii) A single sight-gauge mounted in a vertical position is located in the vicinity of the outlet valve and comprises a plastic sight-tube fitted in a rigid support channel fixed to the side of the tank adjacent to a stainless steel scale (Figure 4).

The scale is graduated in 20 L increments.

(iii) Levelling is effected by means of 4 adjustable legs with reference to the datum level marks permanently marked on the tank. The volume represented by the datum level marks shall be marked on the nameplate. Each leg has an integral footplate with provision for fixing the leg to the floor using dynaboits. Provision is made for a lead and wire seal to be attached after levelling.

(iv) Provision is made for a CIP (clean-in-place) system for both the tank and the sight-gauge.

(v) A side entry or a top entry opening is provided for inspection.

1.2 Verification Provision

Provision is made for a verification mark to be applied.

1.3 Markings

The following is marked on a nameplate permanently attached to the Instrument in a clearly visible location:

Manufacturer's name or mark	
Model number	
Serial number	
NSC approval number	NSC No 8/39
Maximum capacity L
Datum level L
Year of manufacture	

2. Description of Variant 1

In other capacities, with 4 or 5 legs, as listed in Table 1.

TABLE 1

Maximum Capacity (litres)	Number of legs
5 050	4
5 700	4
6 800	4
7 950	4
9 100	4
11 000	5
12 000	5
14 000	5
16 000	5
18 000	5

Approved Capacities

TEST PROCEDURE

Instruments should be tested in conjunction with any relevant tests specified in the Inspector's Handbook.

Maximum Permissible Error at Verification/Certification

The maximum permissible error for farm milk tanks incorporating a sight-gauge is ± 1 scale interval.

National Standards Commission



NOTIFICATION OF CHANGE

CERTIFICATE OF APPROVAL No 8/39

CHANGE No 1

The following changes are made to the approval documentation for the

NDA Engineering Model FHT92 Mk III Farm Milk Tank

submitted by NDA Engineering Ltd
709 Te Rapa Road
Hamilton New Zealand.

In Technical Schedule No 8/39 dated 25/6/90, Table 1 should be amended by replacing the '5 050' litre capacity tank with '5 060' and the '7 950' litre with '8 000'.

Signed and sealed by a person authorised under Regulation 9 of the National Measurement (Patterns of Instruments) Regulations to exercise the powers and functions of the Commission under this Regulation.

A handwritten signature in black ink, appearing to read 'J. Birch', is written over a faint circular stamp.

National Standards Commission



NOTIFICATION OF CHANGE

CERTIFICATE OF APPROVAL No 8/39

CHANGE No 2

The following changes are made to the approval documentation for the
NDA Engineering Model FHT92 MkIII Milk Tank

submitted by NDA Engineering Ltd
709 Te Rapa Road
Hamilton NEW ZEALAND.

1. In Certificate of Approval No 8/39 dated 25/6/90, the **DESCRIPTIVE ADVICE** for the Pattern should be amended by adding the following:

"May also be known as a model FHT93 Mk1."
2. In Technical Schedule No 8/39 dated 25/6/90;
 - (i) **Clause 1. Description of Pattern** should be amended by adding the following:

"May also be known as a model FHT93 Mk1."
 - (ii) The first paragraph of sub-clause (i) of clause **1.1 Details** should be amended by adding the following:

"NOTE: The position of the legs, the agitator and the outlet valve, and the angle of the sloping bottom, may be slightly different from the details shown in Figures 2 and 3."
 - (iii) Sub-clause (ii) of clause **1.1 Details** should be amended by adding the following:

"Provision is made for the scale to be sealed after adjustment."

Signed and sealed by a person authorised under Regulation 9 of the National Measurement (Patterns of Measuring Instruments) Regulations to exercise the powers and functions of the Commission under this Regulation.

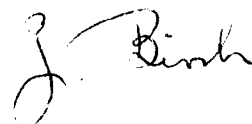


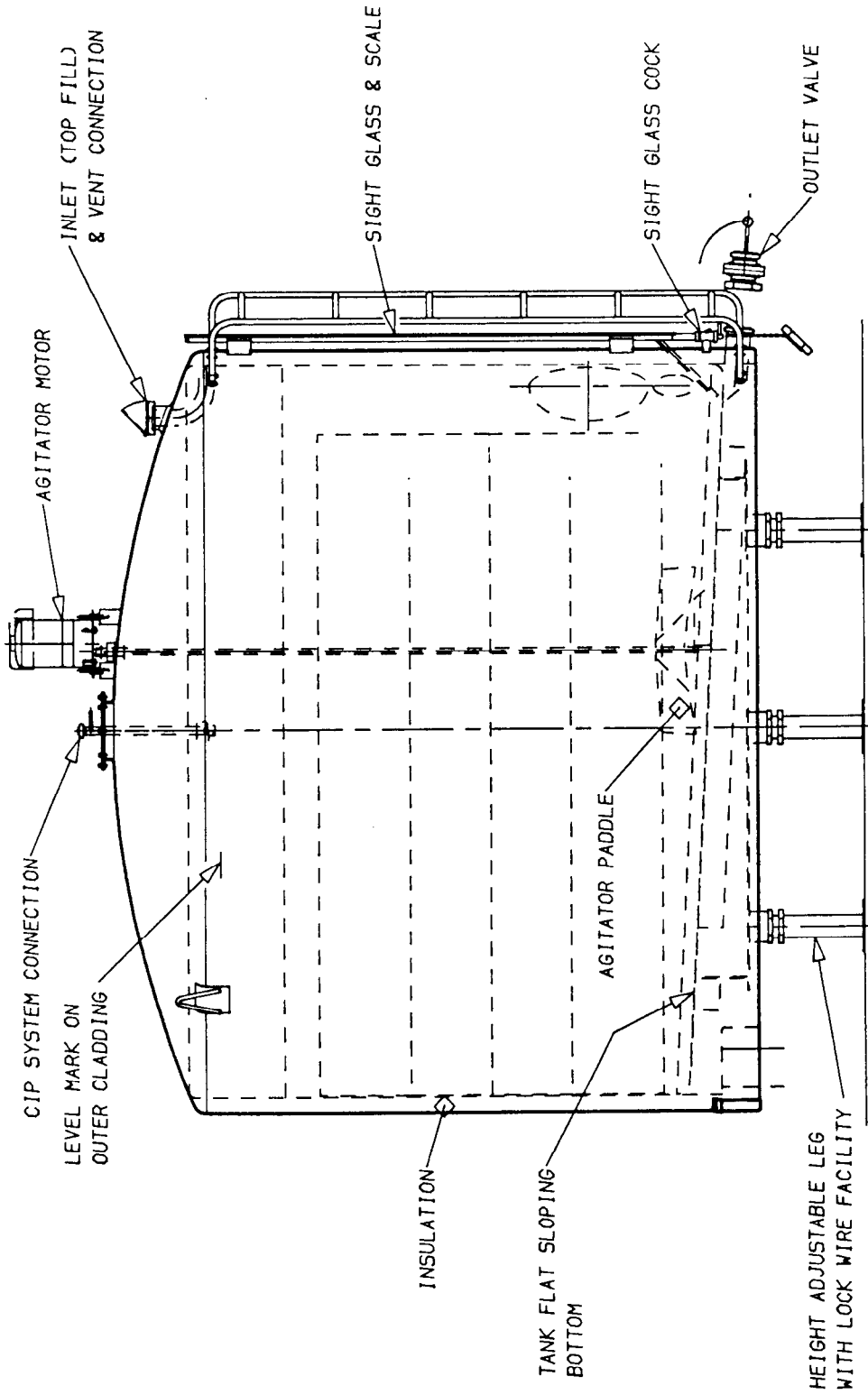
Figure 8/39 - 1



Typical FHT92 Mk III Farm Milk Tanks

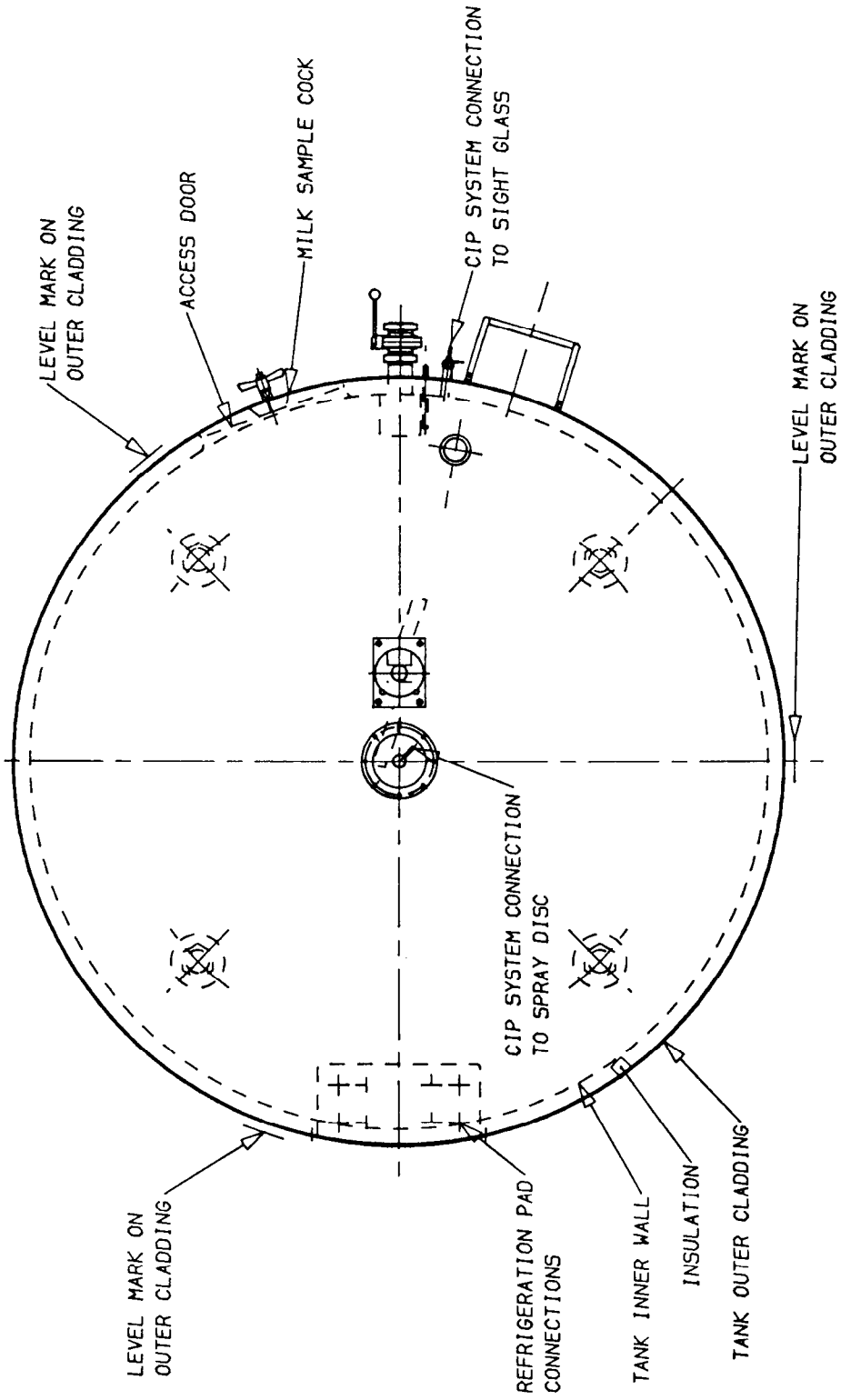
8/39
25/6/90

Figure 8/39 - 2



Side Elevation - Typical

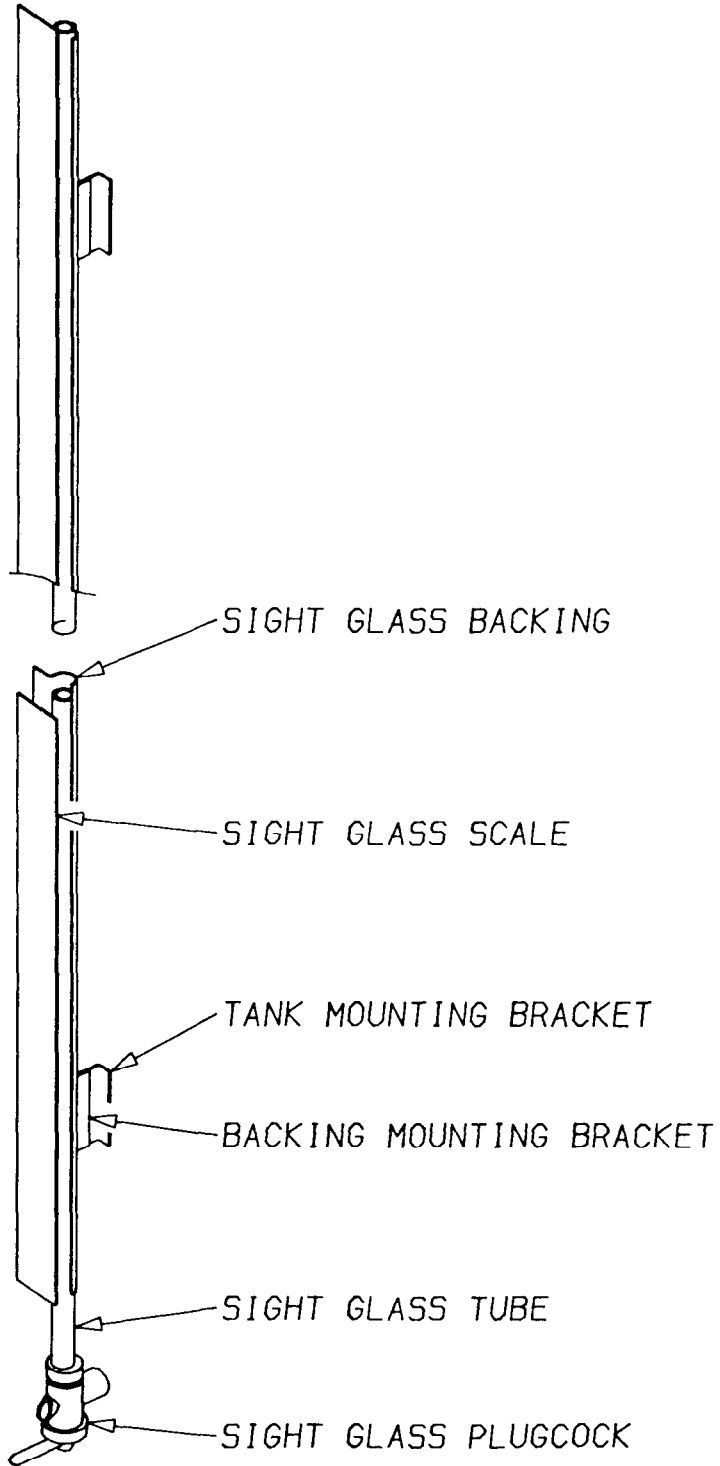
Figure 8/39 - 3



Plan View - Typical

8/39
25/6/90

Figure 8/39 - 4



Sight-gauge