

National Standards Commission



Certificate of Approval No 8/28A

Issued under Regulation 9
of the
National Measurement (Patterns of Instruments) Regulations

This is to certify that an approval for use for trade has been granted in respect of the

Zero Vacuum Model ZV 420 Farm Milk Tank

submitted by Frigrite Refrigeration
27 Grange Road
Cheltenham Victoria 3192.

This Certificate is issued upon completion of a review of NSC approval No 8/28.

Signed and sealed by a person authorised under Regulation 9 of the National Measurement (Patterns of Instruments) Regulations to exercise the powers and functions of the Commission under this Regulation.

A handwritten signature in cursive script, appearing to read "J. Birch".

CONDITIONS OF APPROVAL

This approval is subject to review on or after 1/11/94.
This approval expires in respect of new Instruments on 1/11/95.

Instruments purporting to comply with this approval shall be marked NSC No 8/28A and only by persons authorised by the submittor.

It is the submittor's responsibility to ensure that all instruments marked with this approval number are constructed as described in the drawings and specifications lodged with the Commission and with the relevant Certificate of Approval and Technical Schedule. Failure to comply with this Condition may attract penalties under Section 19B of the National Measurement Act and may result in cancellation or withdrawal of the approval, in accordance with the Commission's Document 106.

The Commission reserves the right to examine any instrument or component of an instrument purporting to comply with this approval.

Special:

Instruments purporting to comply with this approval shall conform with the relevant requirements of Australian Standard AS 1187-1988 for Refrigerated Farm Milk Tank-units.

DESCRIPTIVE ADVICE

Pattern: approved 18/10/89

- A Zero Vacuum model ZV 420 refrigerated farm milk tank of 4200 L maximum capacity.

Variant: approved 18/10/89

1. In other models and capacities as listed in Table 1.

Technical Schedule No 8/28A describes the pattern and variant 1.

FILING ADVICE

The documentation for this approval comprises:

Certificate of Approval No 8/28A dated 13/4/90
Technical Schedule No 8/28A dated 13/4/90 (Incl. Test Procedure)
Figures 1 to 4 dated 13/4/90



National Standards Commission

TECHNICAL SCHEDULE No 8/28A

Pattern: Zero Vacuum Model ZV 420 Farm Milk Tank.

Submitter: Frigrice Refrigeration
27 Grange Road
Cheltenham Victoria 3192.

1. Description of Pattern

A Zero Vacuum model ZV 420 horizontal cylindrical refrigerated farm milk tank (Figures 1 and 2) of 4200 L maximum capacity incorporating a dipstick for the measurement of the volume of contents.

1.1 Details

- (i) The tank is provided with 6 adjustable legs, each having an integral footplate (Figure 3) with provision for fixing the leg to the floor using dynabolts. One dynabolt at each end of the tank is drilled to allow a lead and wire seal to be attached after levelling.
- (ii) A top-mounted access hole is provided at the outlet end of the tank and incorporates a dipstick socket (Figure 4).
- (iii) The tank is in its prescribed position when it slopes towards the outlet at a gradient of not less than 1:220, and the liquid level at approximately half capacity corresponds with the level mark engraved on the rear of the dipstick and with the level marks on the external surface of each corner of the tank (Figure 1).
- (iv) The dipstick is graduated in accordance with Australian Standard AS 1187-1988.

1.2 Markings

The following data is marked on a nameplate permanently attached to the tank in a clearly visible location:

Manufacturer's name or mark	
Model number	
Serial number	
NSC approval number	NSC No 8/28A
Maximum capacity L

The dipstick is marked with the following data:

Manufacturer's name or mark
Datum level
Serial number corresponding with the serial number of the tank
Scale Interval

1.3 Verification Provision

Provision is made for a verification mark to be applied to both the tank and the dipstick.

2. Description of Variant 1

Other models with 4, 6 or 8 legs, and in capacities as listed in Table 1.

TABLE 1

Model	Maximum Capacity (litres)	Number of legs
ZV 250	2 500	4
ZV 460	4 600	6
ZV 530	5 300	6
ZV 610	6 100	8
ZV 680	6 800	8
ZV 760	7 600	6
ZV 850	8 600	8
ZV 950	9 600	8
ZV 1000	10 000	8
ZV 1150	11 500	8
ZV 1200	12 000	8
ZV 1400	14 000	8

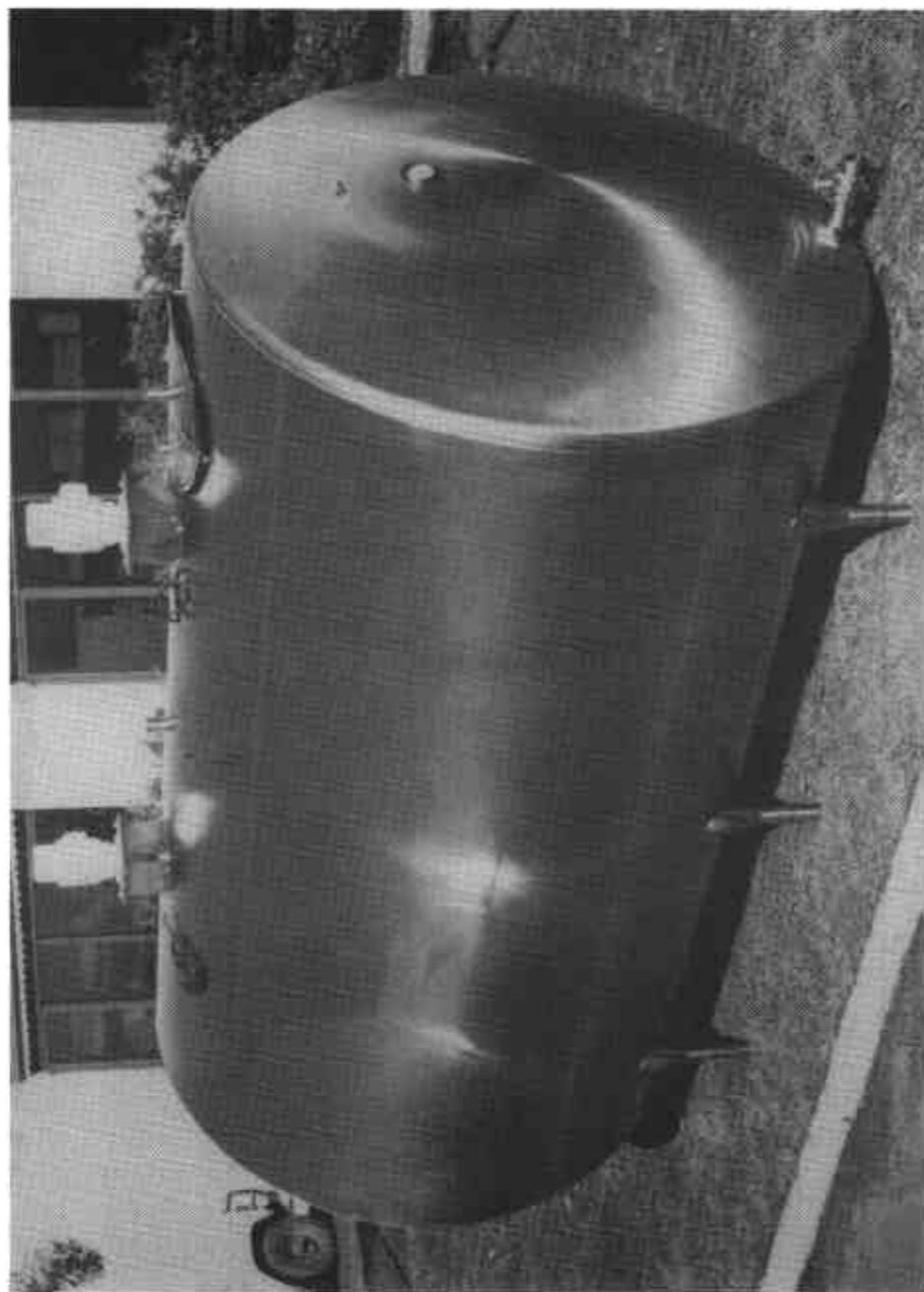
TEST PROCEDURE

Instruments should be tested in conjunction with any relevant tests specified in the Inspector's Handbook.

Maximum Permissible Error at Verification/Certification

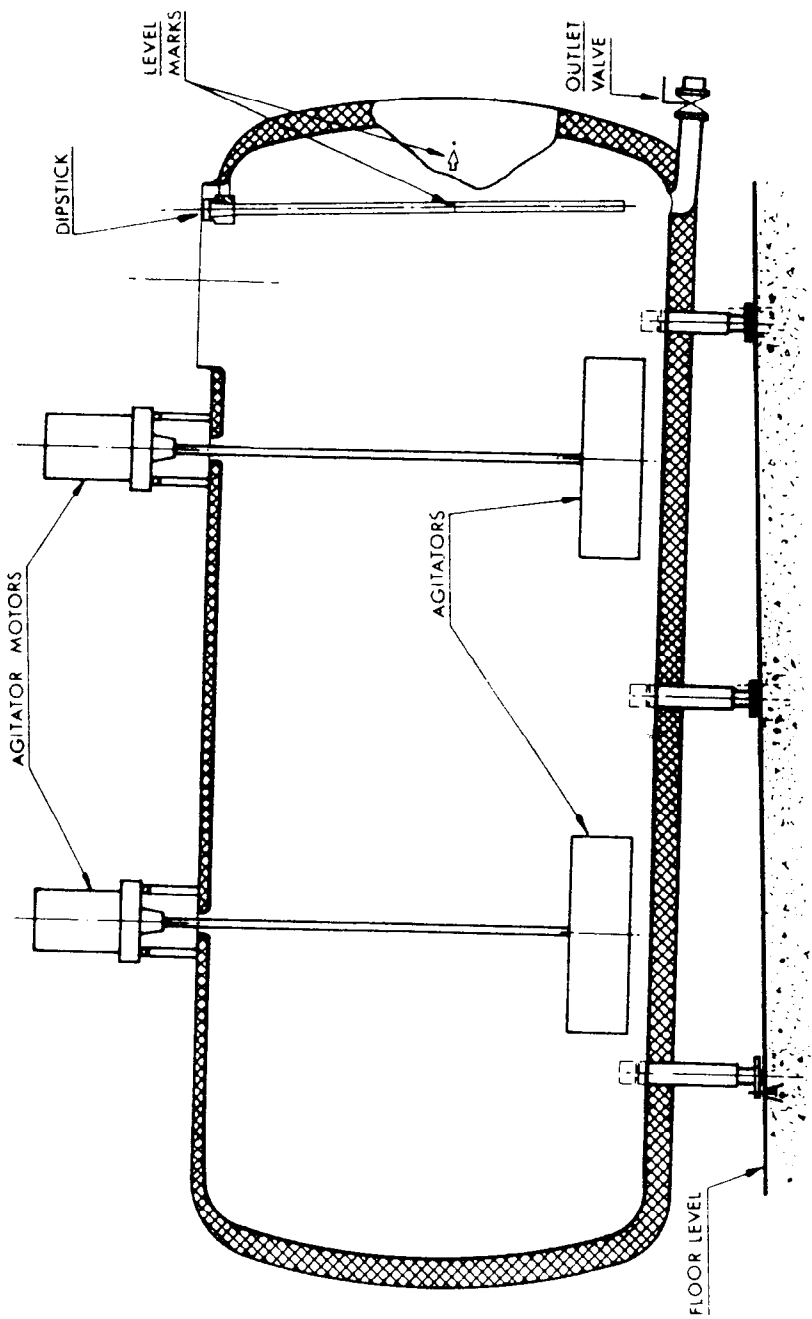
The maximum permissible error for all scale marks on the dipstick is ± 1 scale interval.

Figure 8/28A - 1



Zero Vacuum ZV 420 Farm Milk Tank

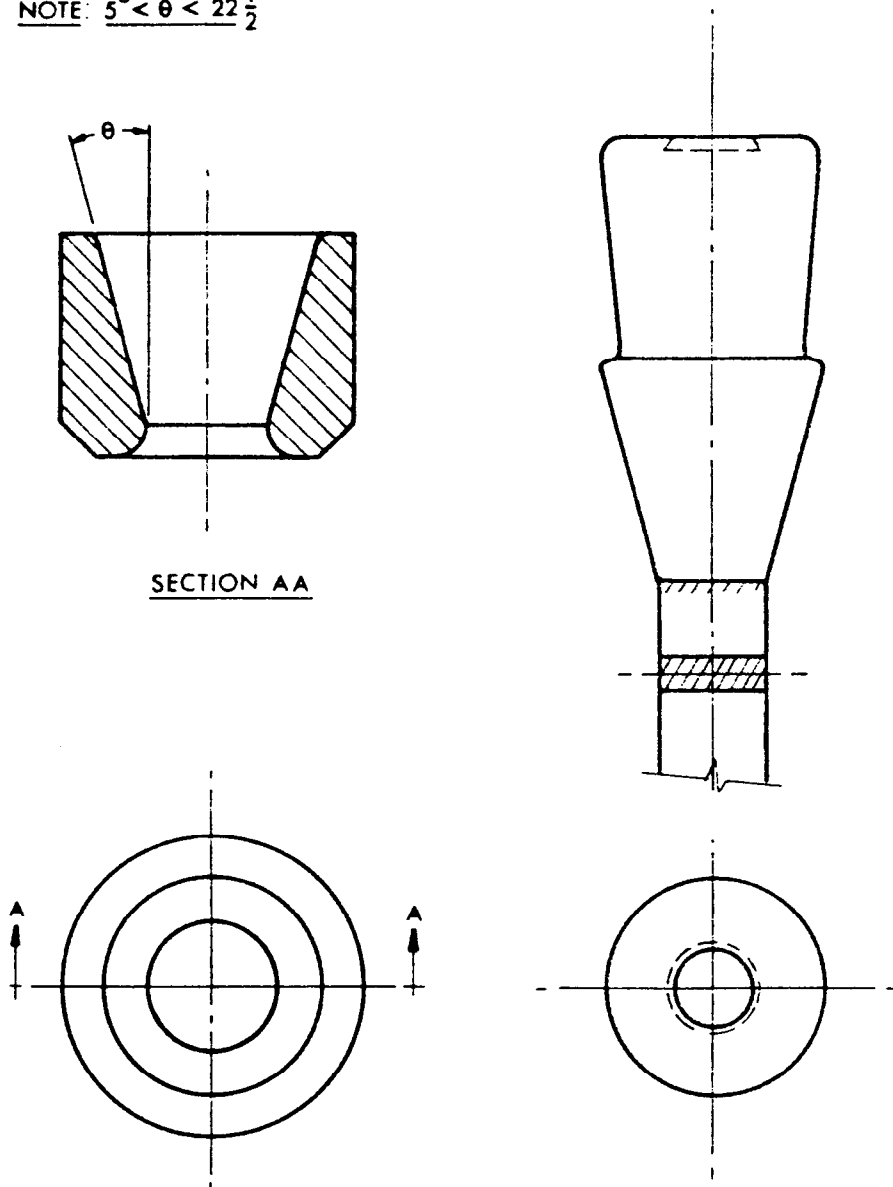
Figure 8/28A - 2



Cross-sectional Elevation - Side View

Figure 8/28A - 3

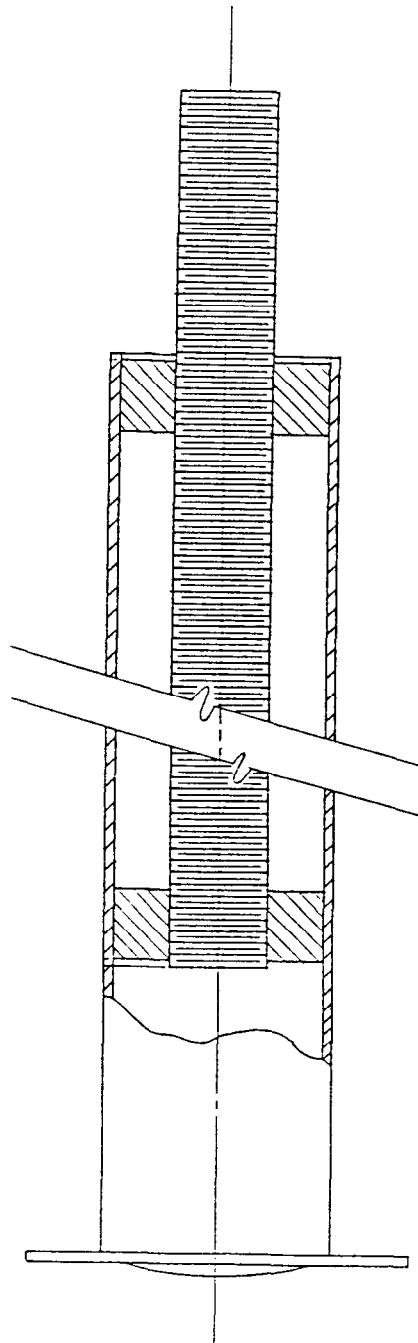
NOTE: $5^{\circ} < \theta < 22\frac{1}{2}^{\circ}$



Dipstick Socket and Boss

8/28A
13/4/90

Figure 8/28A - 4



Combination Leg/Footplate