



Weights and Measures  
(National Standards)  
Act 1960-1966

Weights and Measures  
(Patterns of Instruments)  
Regulations

COMMONWEALTH OF AUSTRALIA

NATIONAL STANDARDS COMMISSION

## *Certificate of Approval*

---

CERTIFICATE NUMBER 8/27

*In respect of the pattern of*

Anderson Farm Milk Tank and Variants.

Submitted and  
manufactured by: Anderson Equipment Co-operative Ltd,  
Wetherill and Egerton Streets,  
Lidcombe,  
New South Wales. 2141.

This is to certify that the pattern and variants of the instrument illustrated and described in this Certificate have been examined by the National Standards Commission under the provisions of the abovementioned Regulations and have been approved as being suitable for use for trade.

The pattern and variants were approved on 30th August 1972.

The pattern and variants are marked "NSC No 8/27", and comply with the General Specifications for Measuring Instruments to be Used for Trade, excluding those requirements which relate to the fitting of a level indicator.

5/9/72

Cont'd over

This Certificate comprises:

Pages 1 to 3 dated 5th September 1972.

Figures 8/27 - 1 to 3 dated 5th September 1972.

Date of issue 5th September 1972.

Signed

A handwritten signature in cursive script, appearing to read "Philip A. Thompson". The signature is written in dark ink and is positioned centrally below the "Signed" label.

A person authorized by the Commission  
to sign Certificates under the  
abovementioned Regulations.

### DESCRIPTION OF PATTERN

The pattern (see Figure 1) is of a farm milk tank of 2800-litres capacity fitted with two dipstick sockets and one dipstick.

The tank consists of a vertical stainless steel cylinder having a minimum thickness of 16 SWG, and of  $2080 \pm 10$  mm internal diameter, sheathed in an outer casing of stainless steel; the cavity between is filled with insulating material (see Figure 1). The bottom is in the form of an offset cone sloping to the outlet. The lower portion of the tank is refrigerated.

The outlet is a sloping 2-inch OD tube closed externally to the vessel by a butterfly valve.

The bridge is welded to the inner cylinder (see Figure 2) and carries two sockets equidistant from the centre, either to accept the one dipstick. It supports an agitator motor as well as incorporating milk-entry holes, temperature-measuring equipment and a notice stating "measurement incorrect if dipstick readings in both sockets do not agree".

The boss of the dipstick and the sockets are of the dimensions shown in Figure 3. The sockets, which are marked A and B respectively, are on the diameter of the tank along the axis of the bridge and are equidistant each side of the centre of the tank.

Levelling is effected by means of four adjustable legs.

Capacity level marks are three centre-punch indentations on the inner surface of the tank.

### DESCRIPTION OF VARIANTS

In other capacities, as follows:

<u>Capacity</u>	<u>Inside Diameter</u>	<u>Number of Legs</u>
litres	mm $\pm$ 10 mm	
1005 to 2500	1730	3
2510 to 5000	2080	4



# NATIONAL STANDARDS COMMISSION

8/27  
14/11/86

## CANCELLATION CERTIFICATE OF APPROVAL No 8/27

This is to certify that the approval for use for trade granted in respect of the pattern of the

Anderson Farm Milk Tank and Variants

submitted by Anderson Equipment Co-operative Ltd  
Wetherill and Egerton Streets  
Lidcombe NSW 2141

has been cancelled in respect of new instruments as from 1 October 1986.

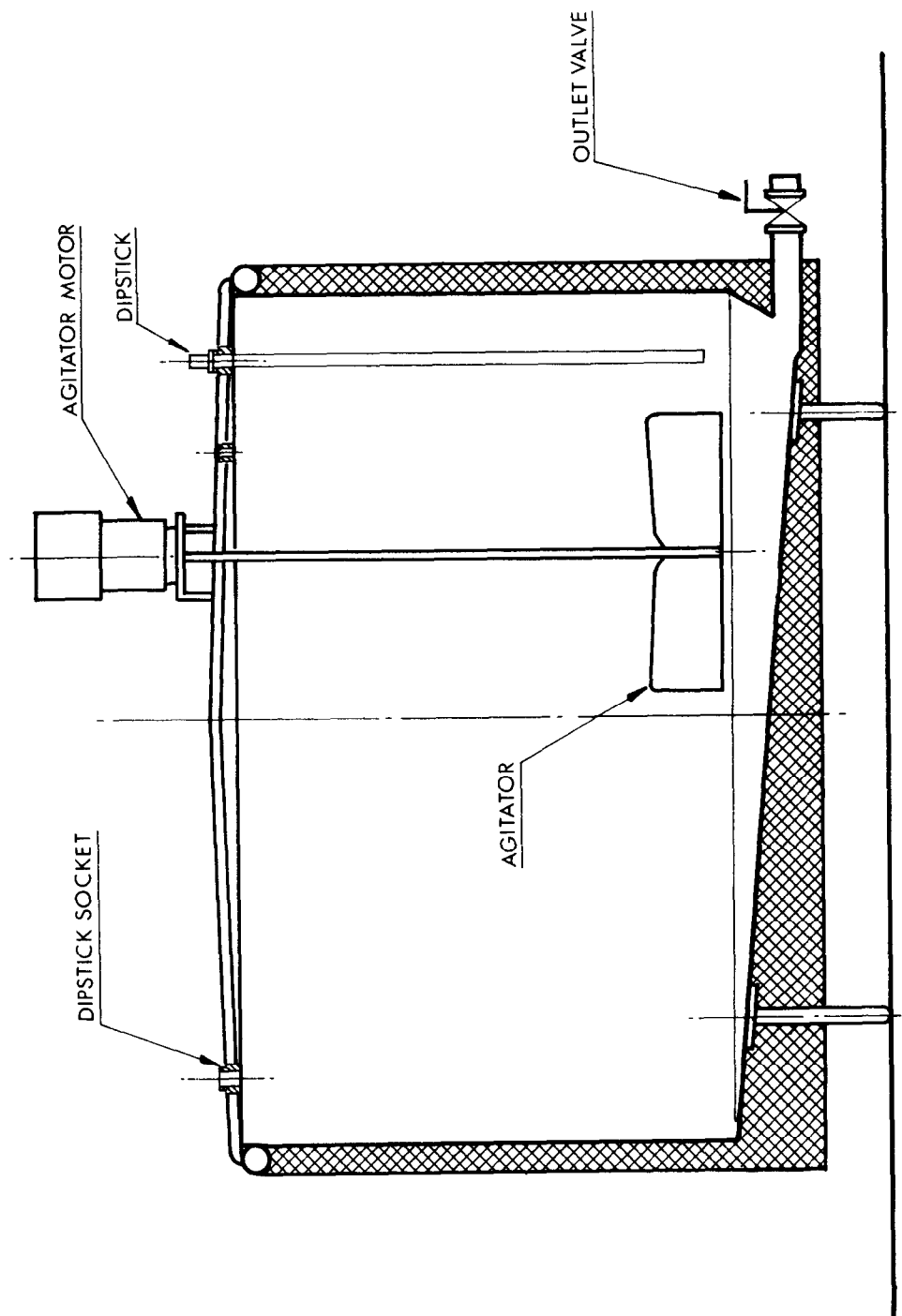
Instruments which were verified before that date may, with the concurrence of the relevant verifying authority, be submitted for reverification.

Signed

A handwritten signature in cursive script, appearing to read "J. Birch".

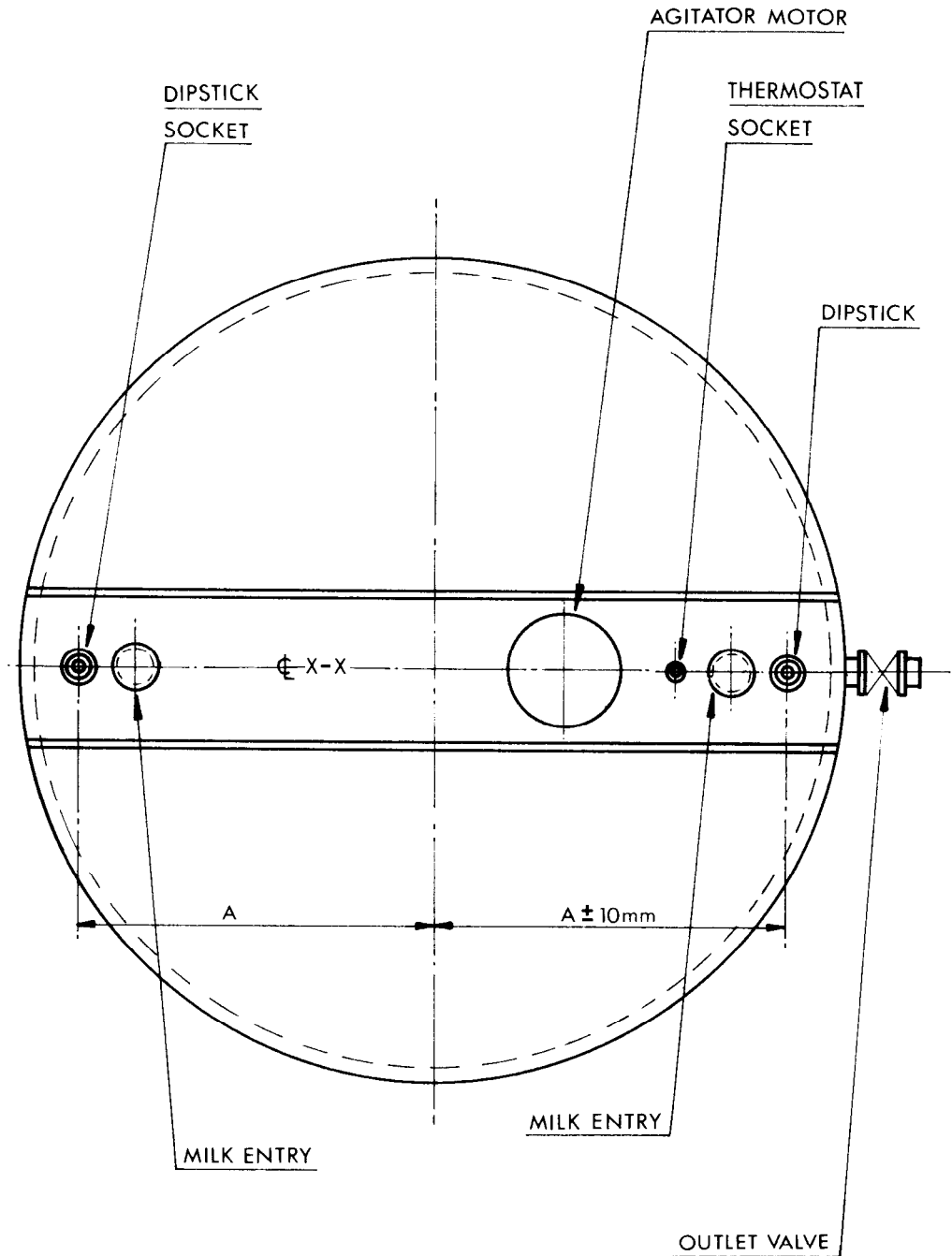
Executive Director

FIGURE 8/27 - 1



Cross-sectional Elevation — Side View

FIGURE 8/27 - 2



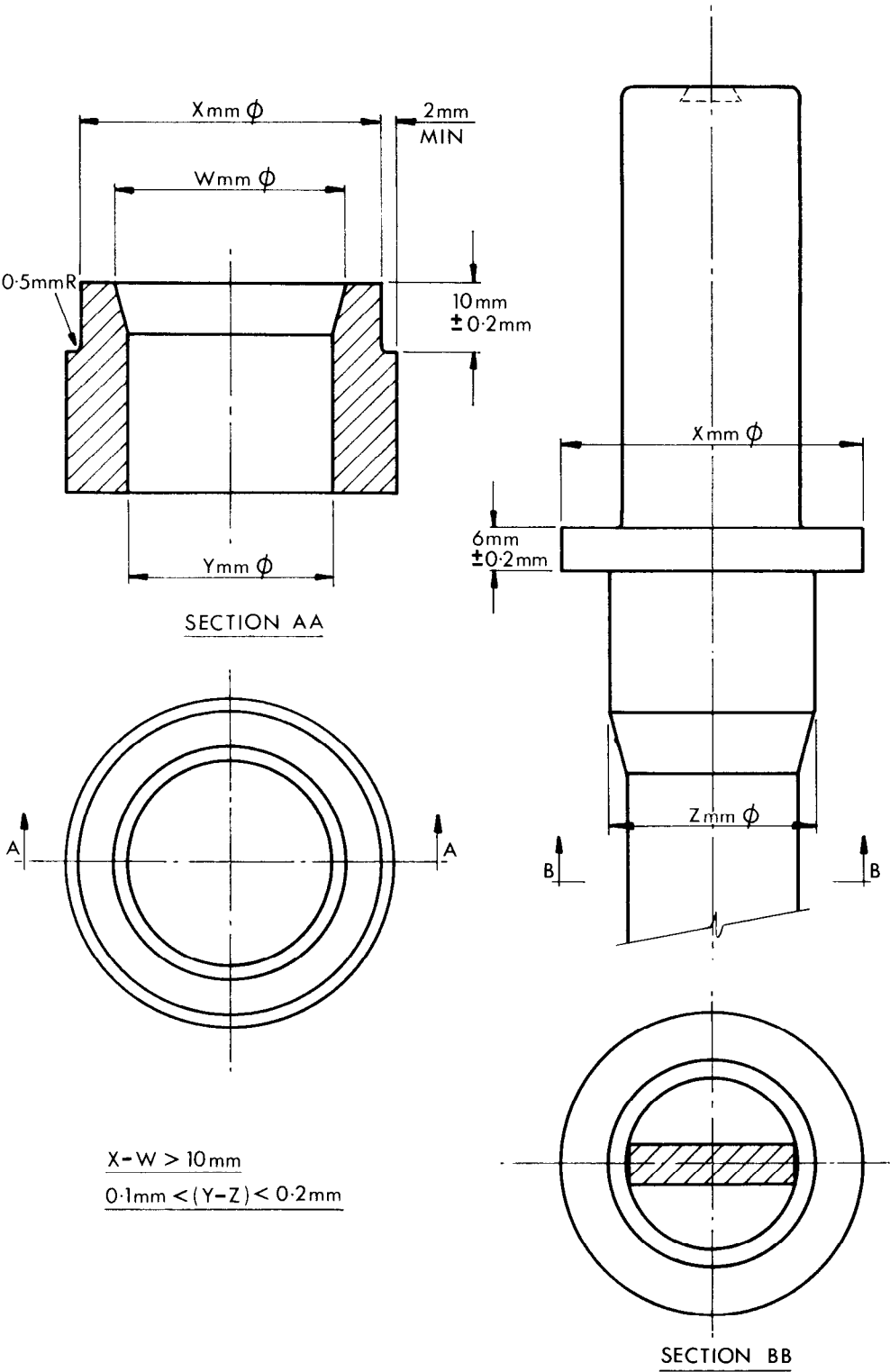
NOTE

DIPSTICK SOCKETS MUST BE  
POSITIONED WITHIN 10mm  
OF CENTRE LINE X-X

Plan View

5/9/72

FIGURE 8/27 - 3



Detail of Socket and Boss for Dipstick

5/9/72