



CANCELLED

013
31-12-90

COMMONWEALTH OF AUSTRALIA

NATIONAL STANDARDS COMMISSION

Weights and Measures
(National Standards)

Act 1960-1966

Weights and Measures
(Patterns of Instruments)

Regulations

Certificate of Approval

CERTIFICATE NUMBER 8/18

In respect of the pattern of

Truscott Regal Farm Milk Tank and Variants.

Submitted and

manufactured by: A. E. Truscott Industries Ltd. ,
39-61 Melbourne Street,
East Maitland,
New South Wales. 2323.

This is to certify that the pattern and variants of the instrument illustrated and described in this Certificate have been examined by the National Standards Commission under the provisions of the abovementioned Regulations and have been approved as being suitable for use for trade.

The pattern and variants 1 to 3 were approved on 14th October, 1968, and variants 4 and 5 were approved on 24th December, 1968.

Approval was granted on condition that all instruments made in conformity with this Certificate:

1. are appropriately marked NSC No 8/18; and
2. comply with the General Specifications for Weighing and Measuring Instruments to be Used for Trade.

30/4/71

Cont'd over

This Certificate comprises:

Pages 1 to 4 dated 30th April, 1971.

Figures 8/18 - 1 to 5 dated 30th April, 1971.

Date of issue 30th April, 1971.

Signed

A handwritten signature in cursive script, reading "Ian Hoerlein".

A person authorised by the Commission
to sign Certificates under the
abovementioned Regulations.

DESCRIPTION OF PATTERN

The pattern is of a farm milk tank of 600 gallons capacity.

It consists of a stainless steel tank as described in Certificate No 8/2, with the bridge and removable lids replaced by a dome welded to the top of the tank (see Figures 1 and 2).

The dome, which has a manhole fitted with a hinged lid, carries the dipstick in a tapered socket, the agitator motor, and a combined dial thermometer and thermostat. The outlet control rod is accessible through the manhole. The level indicator is protected by a hinged lid and is located on a bracket above the outlet (see Figure 3).

The capacity level marks are located on the vertical external sheath of the tank. Each mark is surrounded by a series of shot-blasted circular dots and is indicated by the words "level mark", which are also shot-blasted (see Figure 3).

DESCRIPTION OF VARIANTS

1. In other capacities, namely:

<u>Capacity</u>	<u>Inside Diameter</u> (± 1 inch)	
gallons	ft	in
100 to 150	3	11
150 to 250	4	4
250 to 350	4	11
350 to 450	5	5
*450 to 750	6	2

* Includes the pattern.

2. Calibrated in pounds.
3. With a wheel-operated outlet control rod (see Figures 4 and 5), in which case the manhole is relocated from above the outlet.

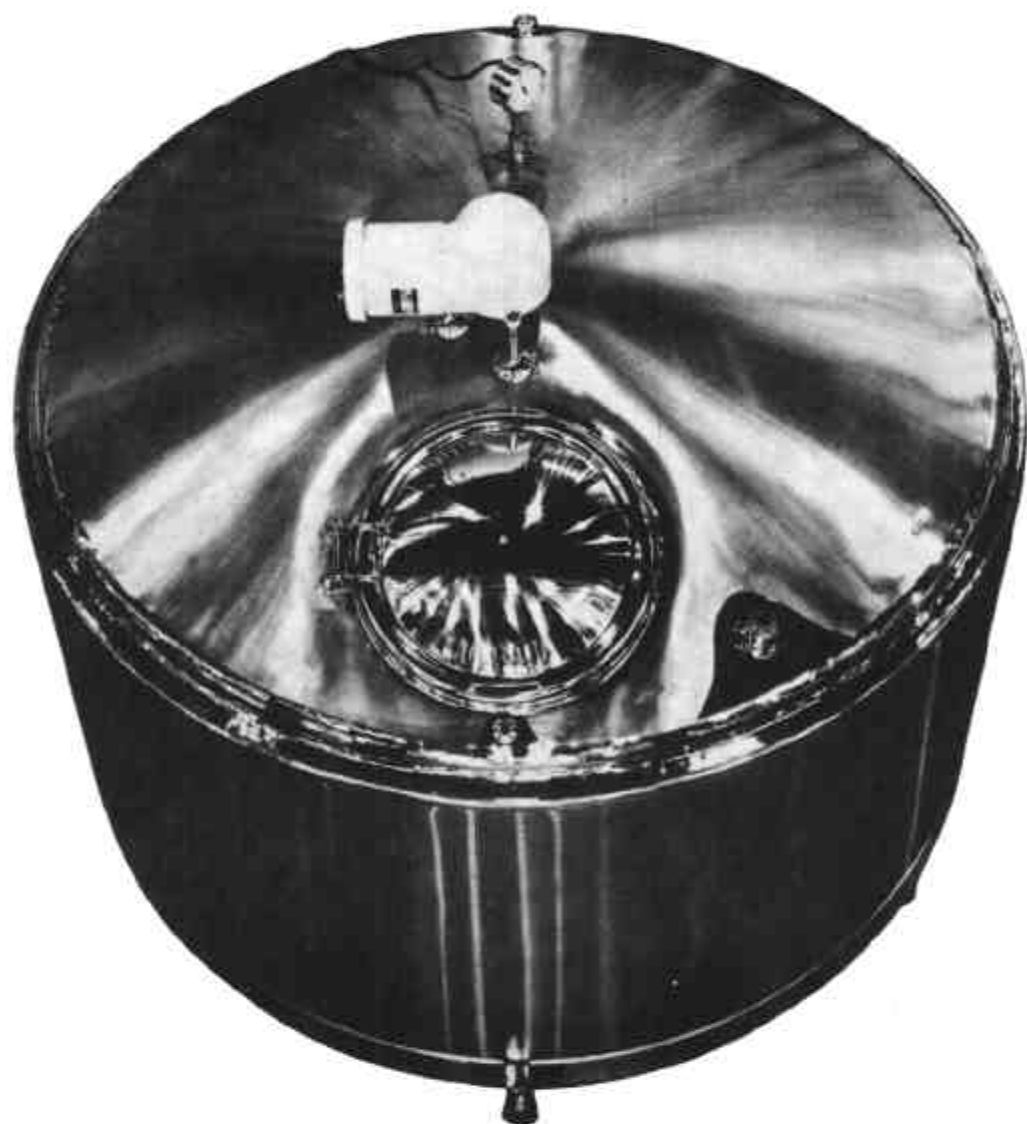
4. In other capacities from 501 to 1000 gallons, in which case the inside diameter is 7 feet 10 $\frac{1}{2}$ inches \pm 1 inch. The tank has two agitators and is supported on four legs.
5. Without the refrigerated bottom.

GENERAL NOTES

Notice of approval of the pattern and variants described in this Certificate was given in Memorandum of Approval No 139 dated 18th October, 1968, and Memorandum of Approval No 143 dated 31st December, 1968.

30/4/71

FIGURE 8/18 - 1

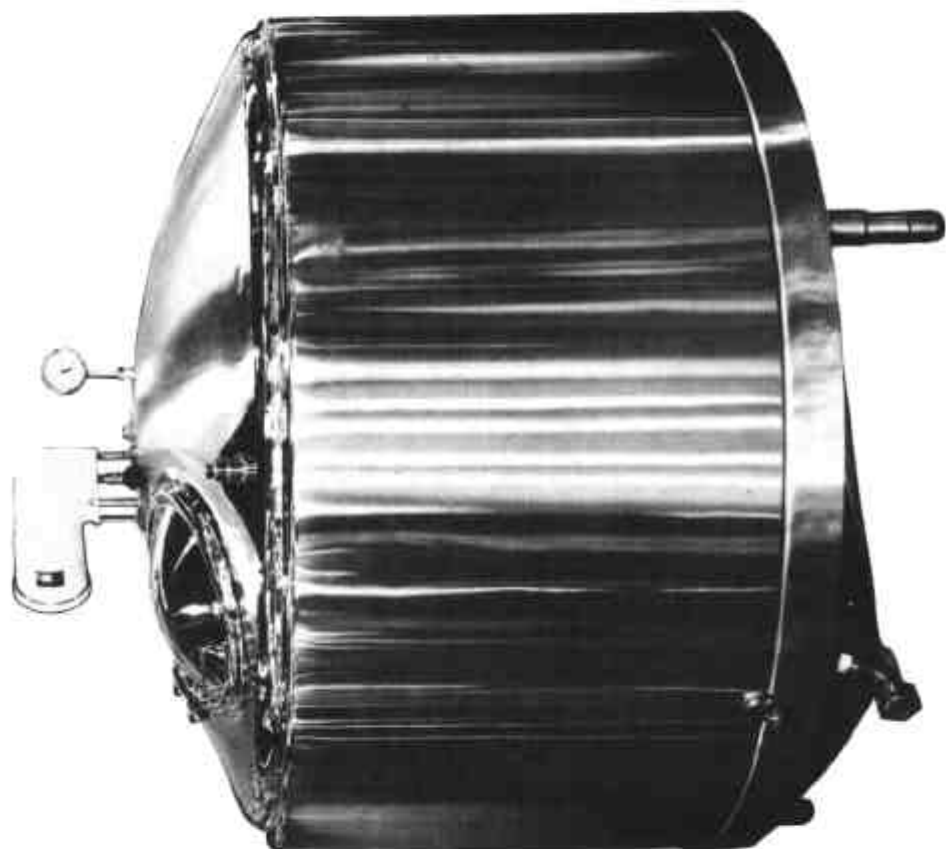


Truscott Regal Farm Milk Tank — 600 Gallons Capacity —

Top View

30/4/71

FIGURE 8/18 - 2



Truscott Regal Farm Milk Tank — 600 Gallons Capacity — Side View

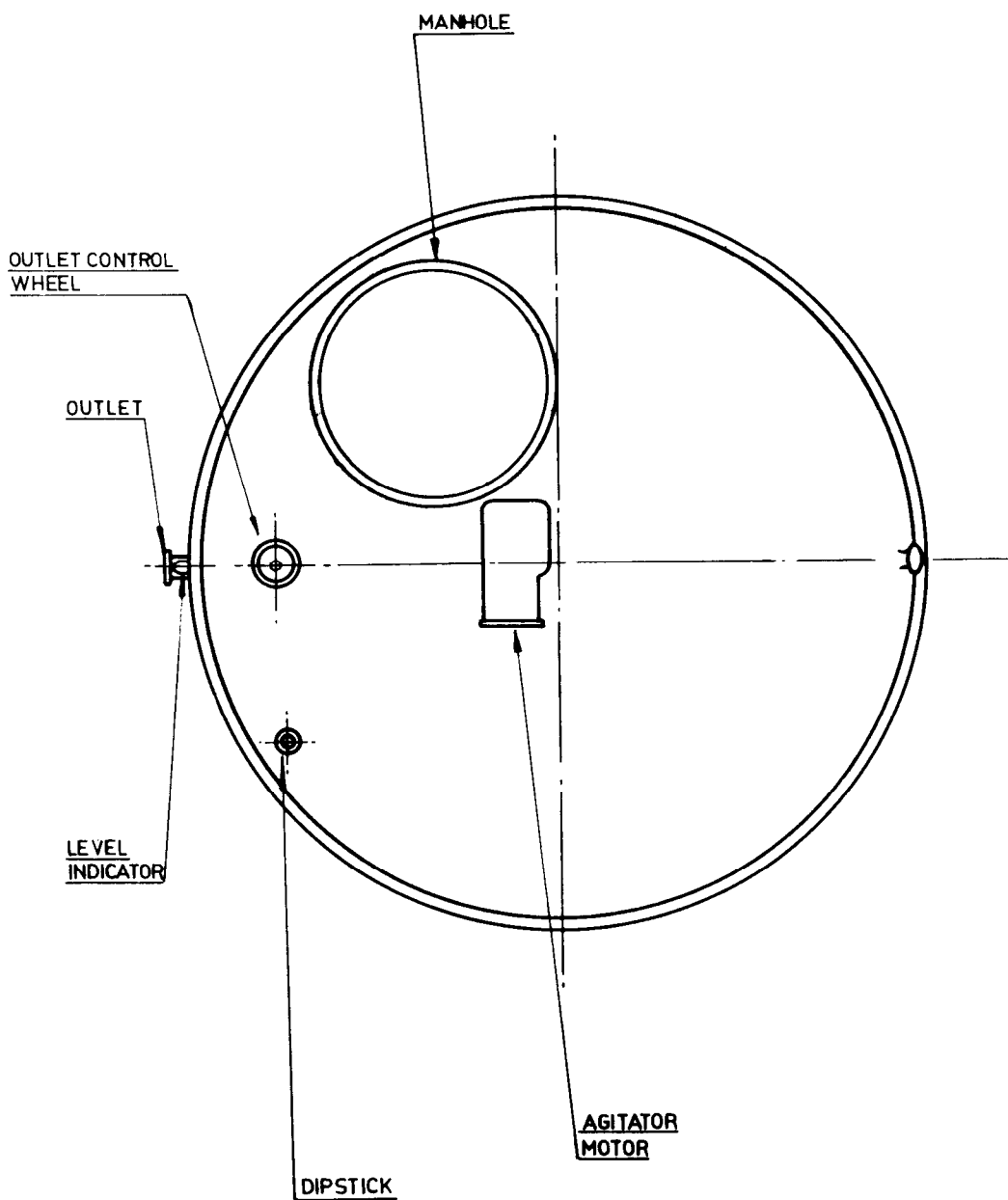


Level Indicator



Level Mark (actual size)
Truscott Regal Farm Milk Tank

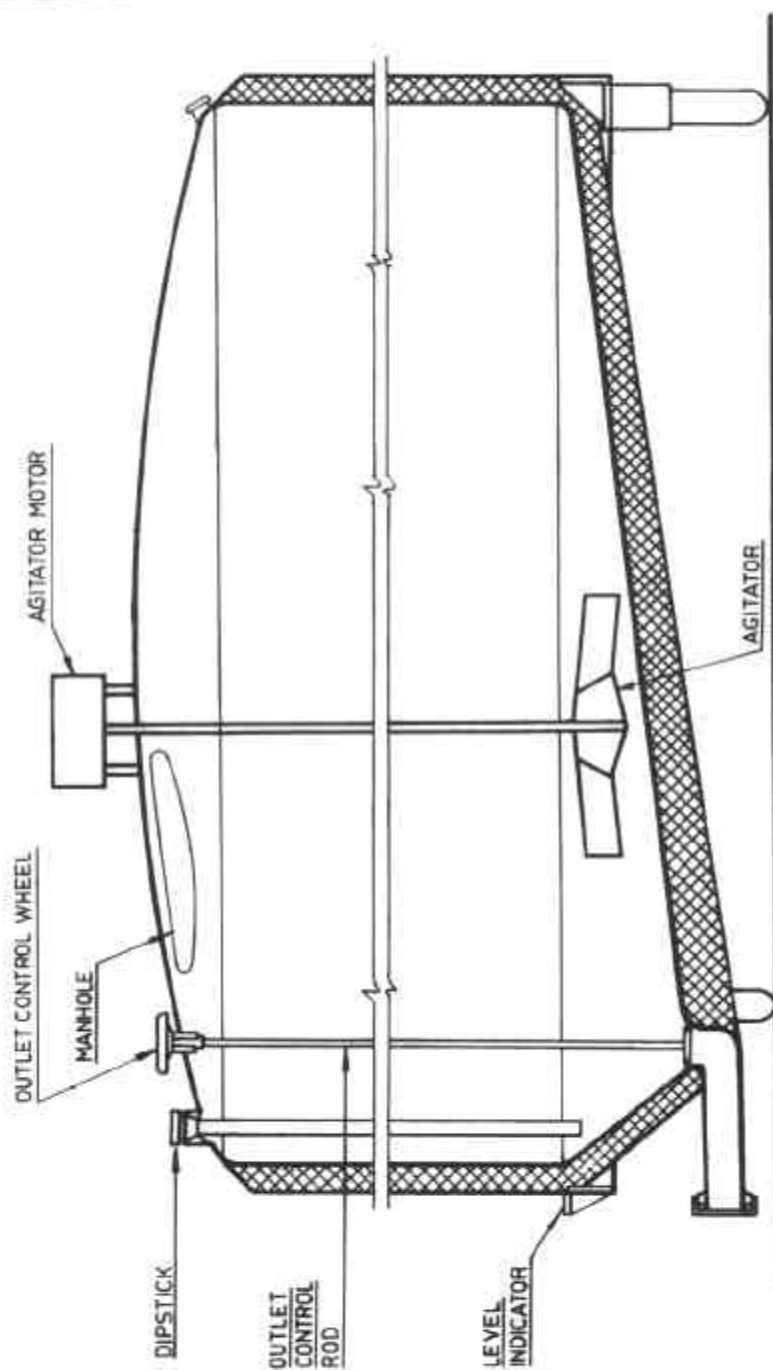
FIGURE 8/18 - 4



Truscott Regal Farm Milk Tank — Plan View
with Outlet Control Wheel

30/4/71

FIGURE 8/18 - 5



Truscott Regal Farm Milk Tank — Cross-sectional Elevation with Outlet Control Wheel