



CANCELLED

0/3
31-12-90

COMMONWEALTH OF AUSTRALIA

NATIONAL STANDARDS COMMISSION

Weights and Measures
(National Standards)
Act 1960-1966
Weights and Measures
(Patterns of Instruments)
Regulations

Certificate of Approval

CERTIFICATE NUMBER 8/16

In respect of the pattern of

Four Seasons Farm Milk Tank and Variants.

Submitted and
manufactured by: A1 Component Welders Pty. Ltd. ,
334 Reserve Road,
Cheltenham,
Victoria. 3192.

This is to certify that the pattern and variants of the instrument illustrated and described in this Certificate have been examined by the National Standards Commission under the provisions of the abovementioned Regulations and have been approved as being suitable for use for trade.

The pattern and variants were approved on 20th May, 1968.

Approval was granted on condition that all instruments made in conformity with this Certificate:

1. are appropriately marked NSC No 8/16; and
2. comply with the General Specifications for Weighing and Measuring Instruments to be Used for Trade.

28/4/71

Cont'd over

This Certificate comprises:

Pages 1 to 3 dated 28th April, 1971.

Figures 8/16 - 1 to 4 dated 28th April, 1971.

Date of issue 28th April, 1971.

Signed



A person authorised by the Commission
to sign Certificates under the
abovementioned Regulations.

28/4/71

DESCRIPTION OF PATTERN

The pattern (see Figure 1) is of a farm milk tank of 350 gallons capacity.

It consists of a stainless steel tank, rectangular in plan, 4 feet 6 inches wide and 5 feet 6½ inches long, sheathed in a flat-sided outer casing of stainless steel; the cavity between is filled with insulating material (see Figures 2, 3 and 4). The sides of the tank are stiffened by V-section ribs tack-welded to the external surface. The bottom of the tank, which is refrigerated, slopes towards the outlet, which is sealed by an internal plug the handle of which is secured by a bracket fixed to the wall of the tank. The tank is supported on four legs.

The bridge spanning the top of the tank slopes downward from the centre and has upturned flanges along each side. It carries an agitator motor, a dial thermometer, a level indicator, and a dipstick in a tapered socket. Supported from the bridge are two hinged lids.

DESCRIPTION OF VARIANTS

1. In other capacities, namely:

<u>Capacity</u>	<u>Width</u> (± 1 inch)	<u>Maximum</u> <u>Length</u>	<u>Maximum</u> <u>Depth</u>	<u>No of</u> <u>Hinged</u> <u>Lids</u>	<u>No of</u> <u>Legs</u>
gallons	ft in	ft in	ft in		
150 to 200	4 6	3 6	3 0	1	4
*201 to 500	4 6	6 10	3 0	2	4
501 to 600	5 6	8 0	3 0	2	6

* Includes the pattern.

Tanks of 600 gallons capacity have two lids pivoted from subsidiary bridges separate from the main bridge; the space between is covered by removable lids which are not hinged.

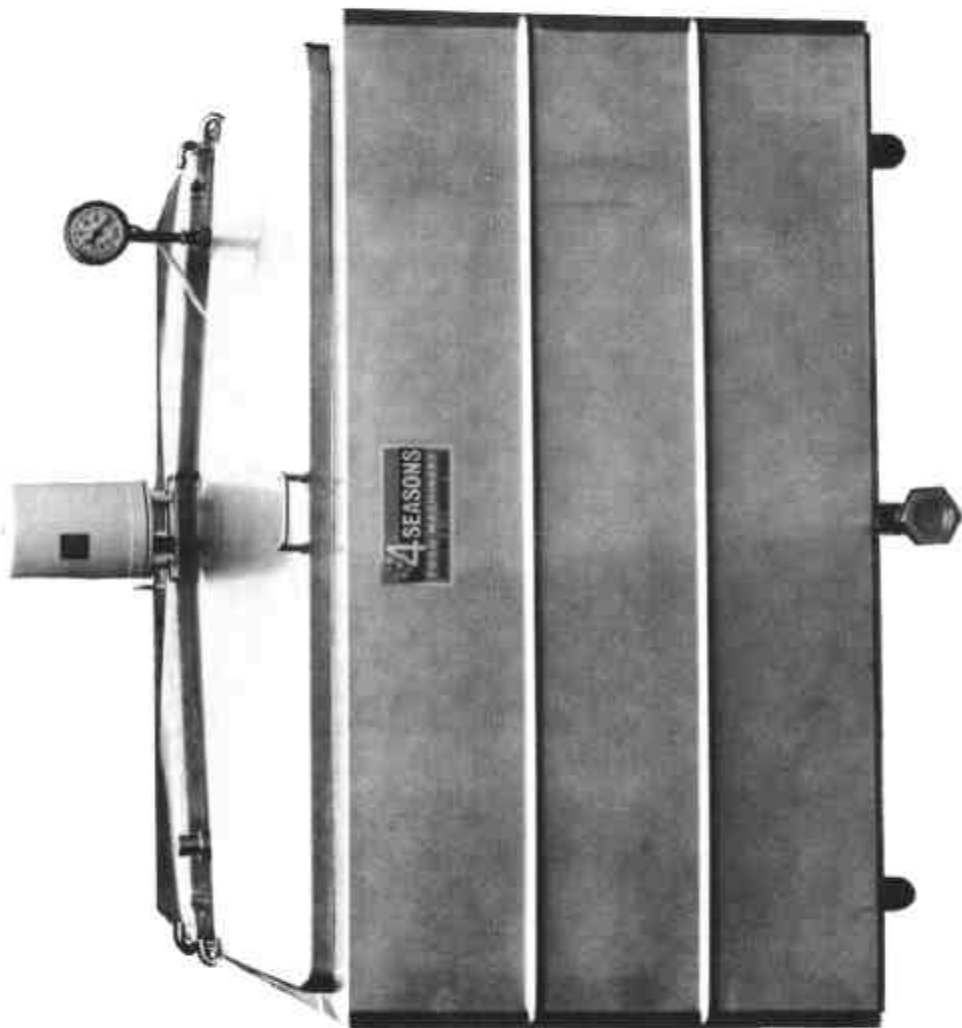
2. Calibrated in pounds.

GENERAL NOTES

Notice of approval of the pattern and variants described in this Certificate was given in Memorandum of Approval No 122A dated 16th August, 1968.

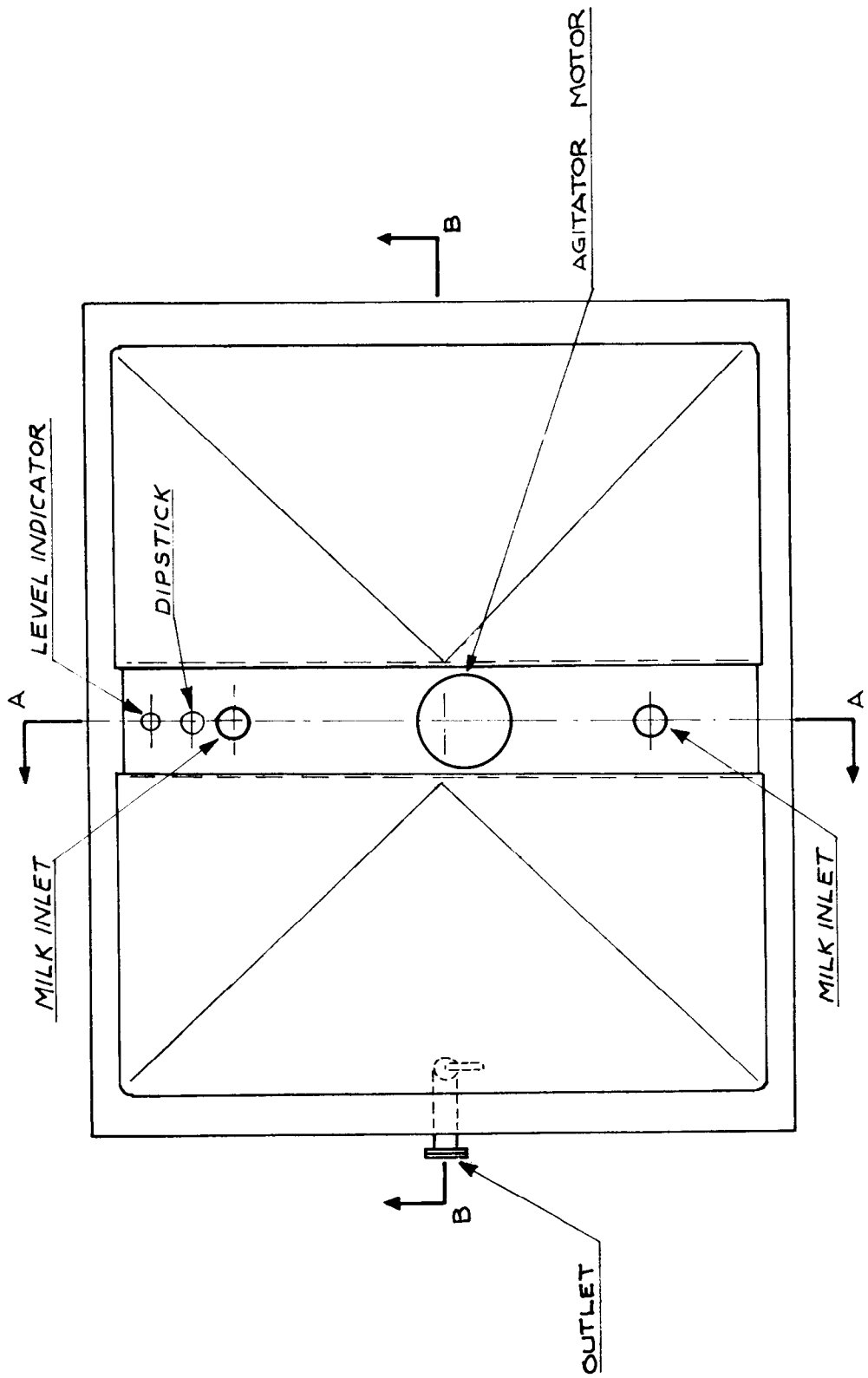
28/4/71

FIGURE 8/16 - 1



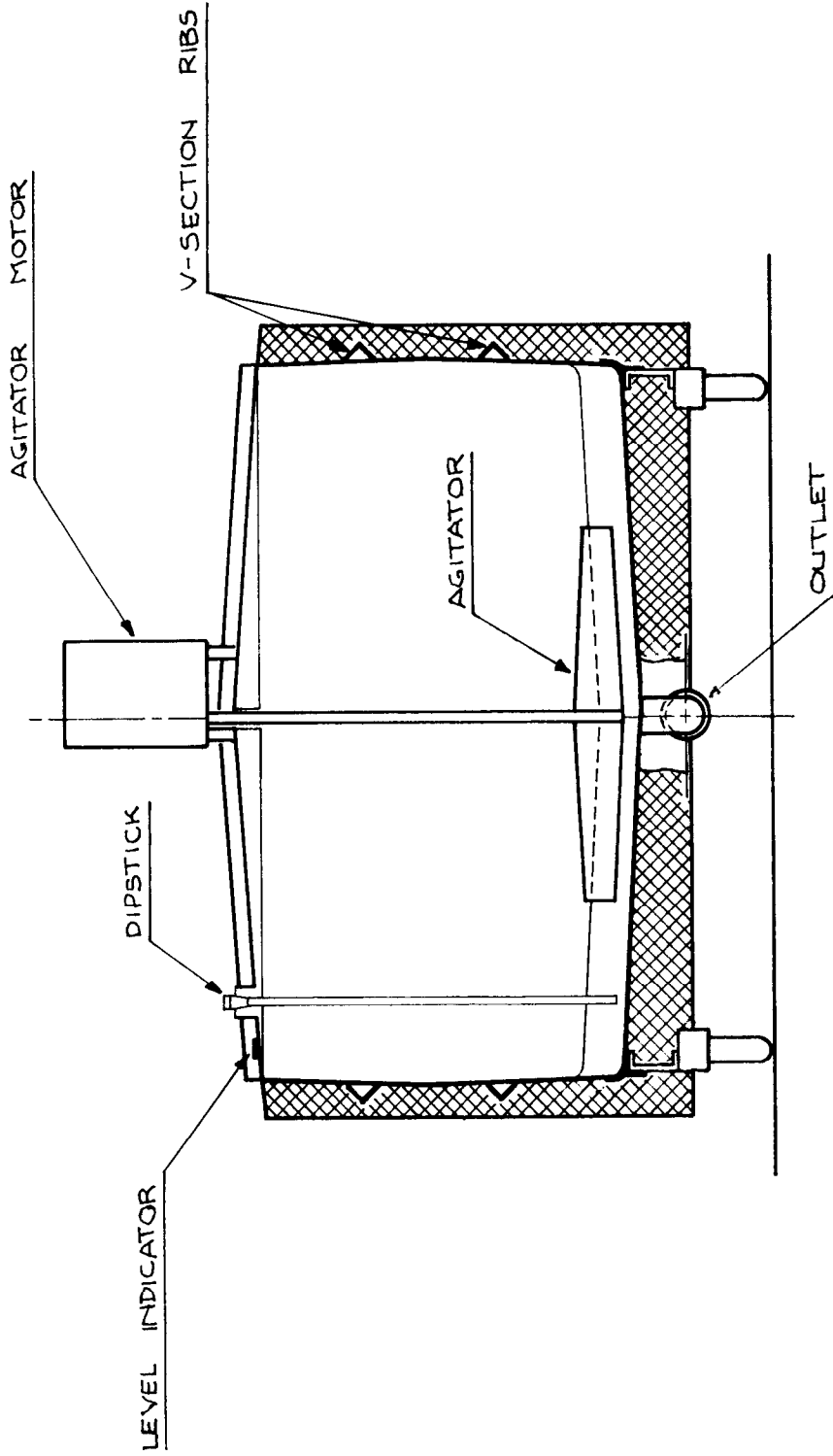
Four Seasons Farm Milk Tank — 350 Gallons Capacity

FIGURE 8/16 - 2



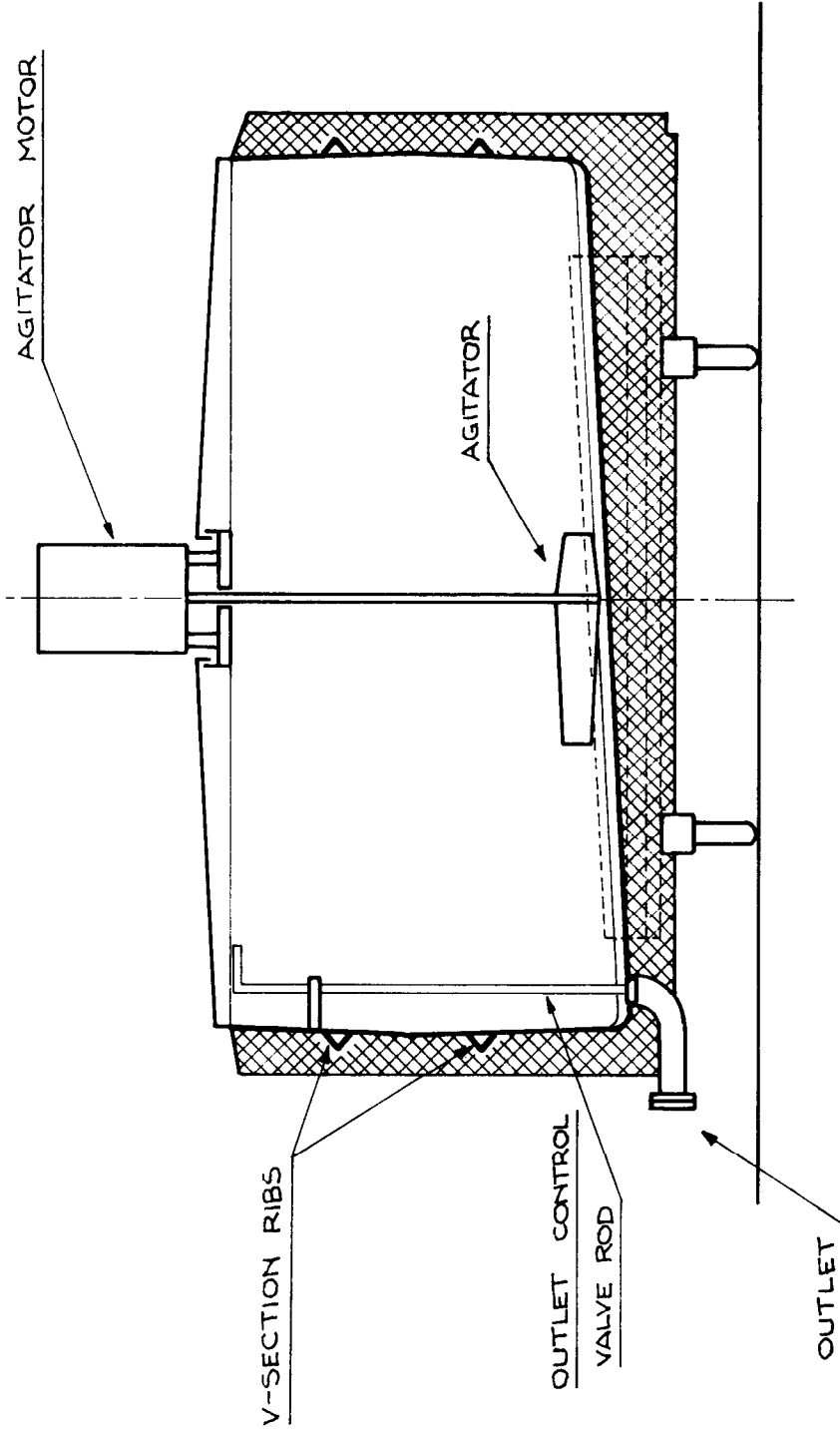
Four Seasons Farm Milk Tank — Plan View

FIGURE 8/16 - 3



Four Seasons Farm Milk Tank — Section AA

FIGURE 8/16 - 4



Four Seasons Farm Milk Tank — Section BB