



Weights and Measures
(National Standards)
Act 1960-1966
Weights and Measures
(Patterns of Instruments)
Regulations

CANCELLED

0/3
31-12-90

COMMONWEALTH OF AUSTRALIA

NATIONAL STANDARDS COMMISSION

Certificate of Approval

CERTIFICATE NUMBER 8/14

In respect of the pattern of

Dairy-Kold Mobile Farm Milk Tank and Variants.

Submitted and
manufactured by: M. J. Marshall Pty. Ltd.,
92 Belmore Road,
Riverwood,
New South Wales. 2210.

This is to certify that the pattern and variants of the instrument illustrated and described in this Certificate have been examined by the National Standards Commission under the provisions of the abovementioned Regulations and have been approved as being suitable for use for trade.

The pattern and variants were approved on 19th December, 1967.

Approval was granted on condition that:

1. all instruments made in conformity with this Certificate:
 - (a) are appropriately marked NSC No 8/14; and
 - (b) comply with the General Specifications for Weighing and Measuring Instruments to be Used for Trade;

28/5/71

Cont'd over

2. variant 1 is limited to one instrument, Serial No 1720.

This Certificate comprises:

Pages 1 to 4 dated 28th May, 1971.

Figures 8/14 - 1 to 4 dated 28th May, 1971.

Date of issue 28th May, 1971.

Signed



A person authorised by the Commission
to sign Certificates under the
abovementioned Regulations.

28/5/71

DESCRIPTION OF PATTERN

The pattern (see Figure 1) is of a farm milk tank of 400 gallons capacity.

It consists of a horizontal stainless steel cylinder of elliptical cross-section sheathed in an outer casing of stainless steel; the cavity between is filled with insulating material (see Figures 2 and 3). The lower part of the cylinder is refrigerated. The cylinder has dished ends.

The tank is attached to a chassis, which is fitted with wheels and four screw levelling jacks.

An agitator motor is mounted on the top of the tank between two manholes.

The tapered dipstick socket and the level indicator are mounted close together between one manhole and the agitator motor. The dipstick is carried in a tube on the chassis. It can only be inserted into the tank when the hinged dust cover over its socket has been opened (see Figure 4). This action opens a switch which stops the agitator motor, thus preventing damage to the blades or to the dipstick. The point of the dipstick is sharpened to prevent it resting on an agitator blade.

The capacity level marks are located on each side of the ends of the tank (see Figure 3). The outlet control device is a 2-inch cock.

DESCRIPTION OF VARIANTS

- *1. The pattern with 0.06 inch wide graduations on the dipstick.
2. The pattern in other capacities from 190 to 840 gallons.
3. The pattern or variant 2 calibrated in pounds.

* See Condition of Approval No 2.

4. The pattern or variants 2 or 3 without the refrigerated bottom.
5. The pattern or variants 2, 3 or 4 without the refrigerated bottom and with no insulation or outer casing.
6. The pattern or variants 2 to 5 with the tank mounted on a flat tray which is fitted with wheels and four levelling legs.
7. The pattern or variants 2 to 5 without the chassis, in which case six adjustable legs are fitted to the tank-mounting brackets on tanks up to 500 gallons capacity, and eight adjustable legs on tanks above 500 gallons capacity.

GENERAL NOTES

Notice of approval of the pattern and variants described in this Certificate was given in Memorandum of Approval No 103 dated 21st December, 1967.

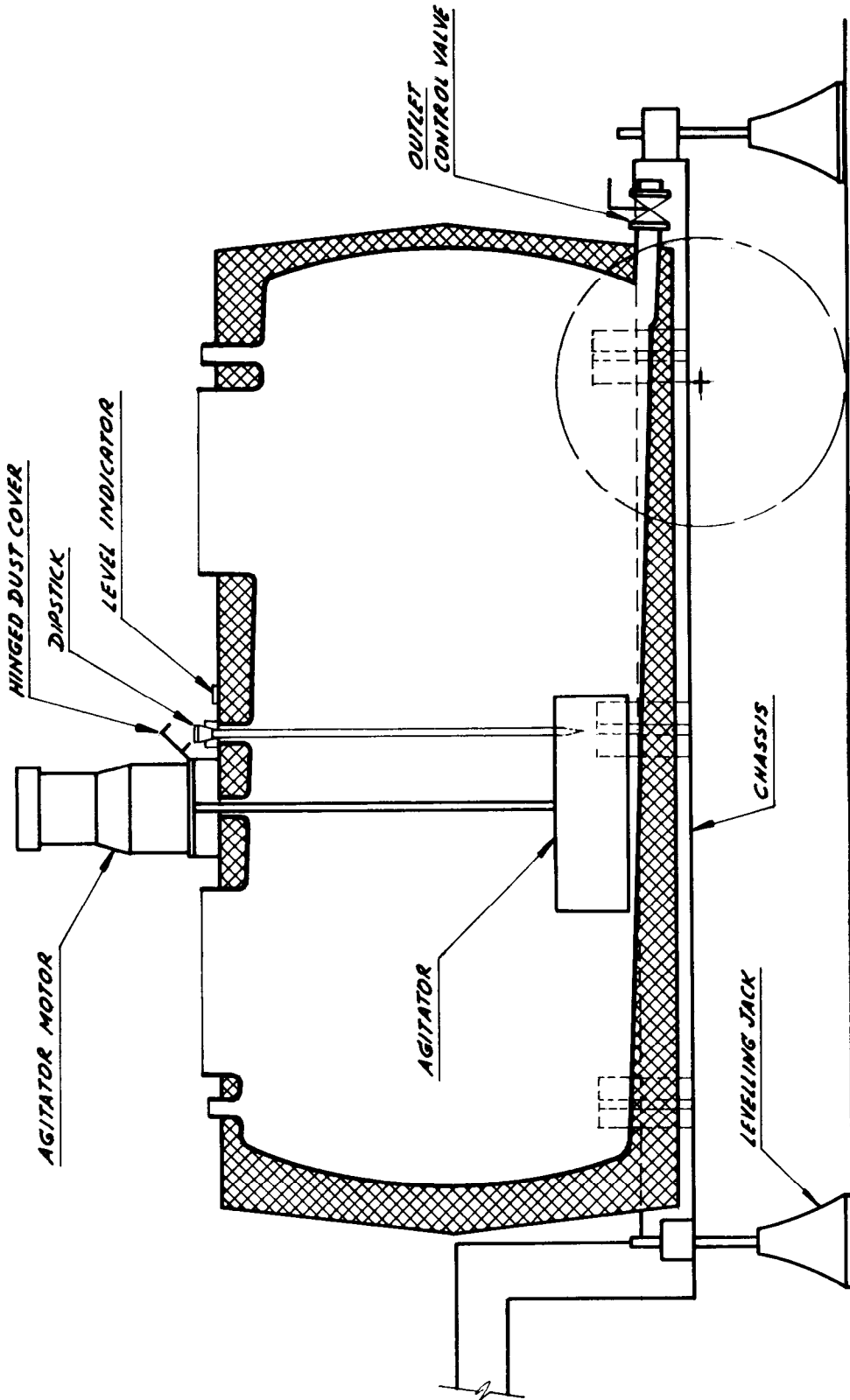
28/5/71

FIGURE 8/14 - 1



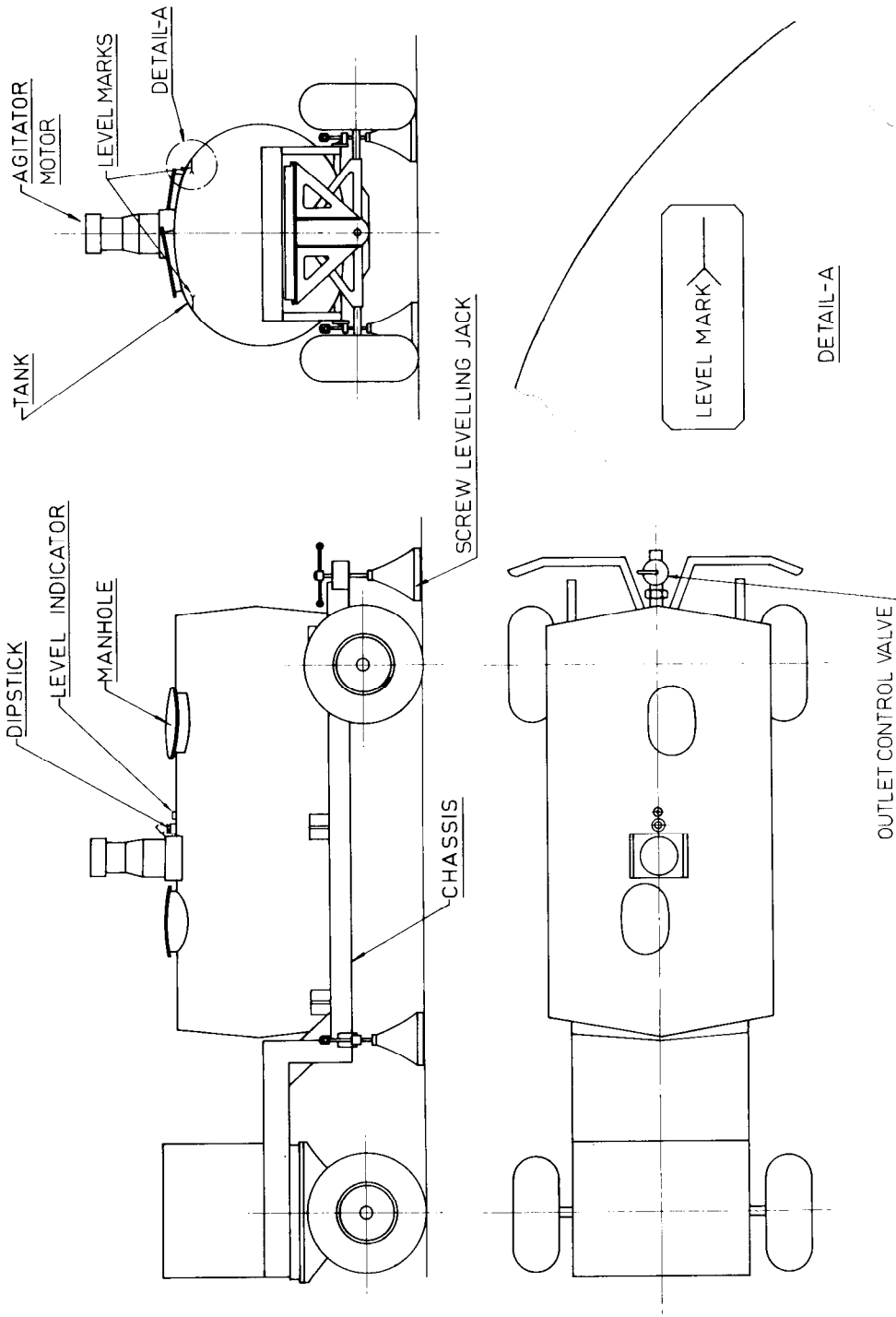
Dairy-Kold Mobile Farm Milk Tank — 400 Gallons Capacity

FIGURE 8/14 - 2



Dairy-Kold Mobile Farm Milk Tank — Cross-sectional Elevation — Side

FIGURE 8/14 - 3



Dairy-Kold Mobile Farm Milk Tank — Side, Plan and End View

FIGURE 8/14 - 4



Dairy-Kold Mobile Farm Milk Tank — Dipstick Socket