



Weights and Measures  
(National Standards)  
Act 1960-1966  
Weights and Measures  
(Patterns of Instruments)  
Regulations

0/3  
31-12-90  
COMMONWEALTH OF AUSTRALIA

NATIONAL STANDARDS COMMISSION

# *Certificate of Approval*

---

CERTIFICATE NUMBER 8/10

*In respect of the pattern of*

Pioneer Farm Milk Tank and Variants.

Submitted and

manufactured by: Pioneer Refrigeration Pty. Ltd.,  
178-196 Normanby Road,  
South Melbourne,  
Victoria. 3205.

This is to certify that the pattern and variants of the instrument illustrated and described in this Certificate have been examined by the National Standards Commission under the provisions of the abovementioned Regulations and have been approved as being suitable for use for trade.

The pattern and variants were approved on 19th May, 1967.

Approval was granted on condition that all instruments made in conformity with this Certificate:

1. are appropriately marked NSC No 8/10; and
2. comply with the General Specifications for Weighing and Measuring Instruments to be Used for Trade.

11/5/71

Cont'd over

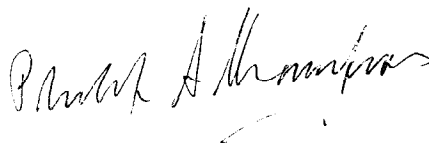
This Certificate comprises:

Pages 1 to 4 dated 11th May, 1971.

Figures 8/10 - 1 to 4 dated 11th May, 1971.

Date of issue 11th May, 1971.

Signed



A person authorised by the Commission  
to sign Certificates under the  
abovementioned Regulations.

11/5/71

DESCRIPTION OF PATTERN

The pattern (see Figure 1) is of a farm milk tank of 300 gallons capacity.

It consists of a stainless steel tank of rectangular cross-section with slightly concave sides, 3 feet 2½ inches wide, 6 feet 2½ inches long, and 2 feet 8 inches deep at the outlet, sheathed in an outer casing of stainless steel; the cavity between is filled with insulating material (see Figures 2, 3 and 4). The bottom of the tank, which is refrigerated, slopes towards the outlet, which is sealed by an internal plug the handle of which is secured by a bracket fixed to the inside wall of the tank. The tank is supported on four legs.

The bridge, which spans the top of the tank, slopes downward from the centre and has upturned flanges along each side. The bridge is stiffened by welding two parallel stainless steel tubes across the tank, each with two support rods to the bridge. The bridge carries an agitator motor, a level indicator and a dipstick in a tapered socket. Supported from the bridge are two hinged lids.

The liquid level at capacity is not less than 1½ inches from the brim of the tank.

DESCRIPTION OF VARIANTS

1. In other capacities, namely:

<u>Capacity</u> (± 5%)	<u>Width</u> (± 1 inch)	<u>Maximum</u> <u>Length</u>	<u>Maximum</u> <u>Depth</u>
gallons	ft in	ft in	ft in
135	3 3	4 9	2 2
201	2 8½	10 0	2 9
250	2 8½	10 0	2 9
*300	3 2½	9 7	2 9
400	4 0	7 9	2 9
501	4 0	10 0	3 4
580	4 2	10 0	3 4½

\* Includes the pattern.

11/5/71

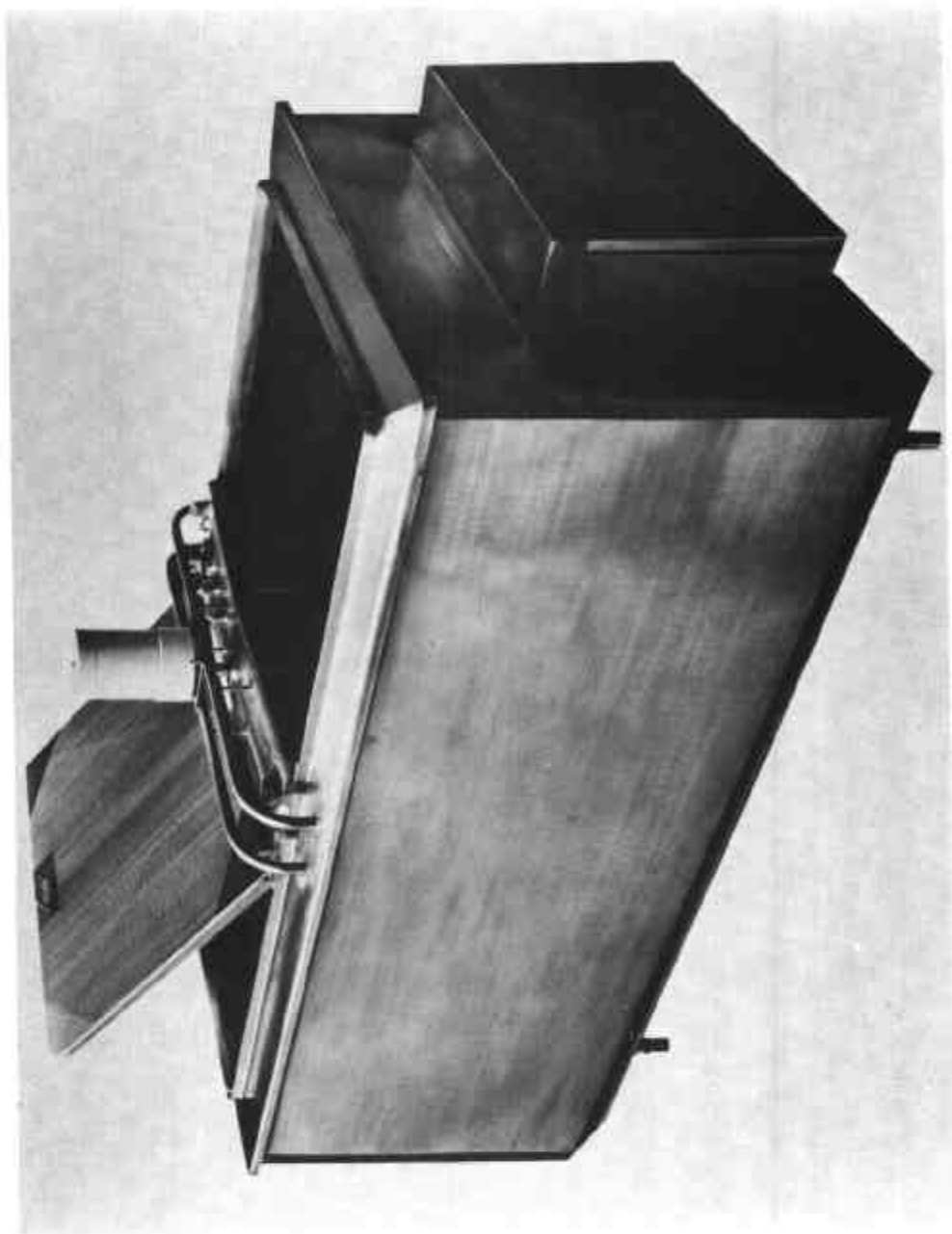
2. Calibrated in pounds.

GENERAL NOTES

Notice of approval of the pattern and variants described in this Certificate was given in Memorandum of Approval No 61 dated 22nd May, 1967.

11/5/71

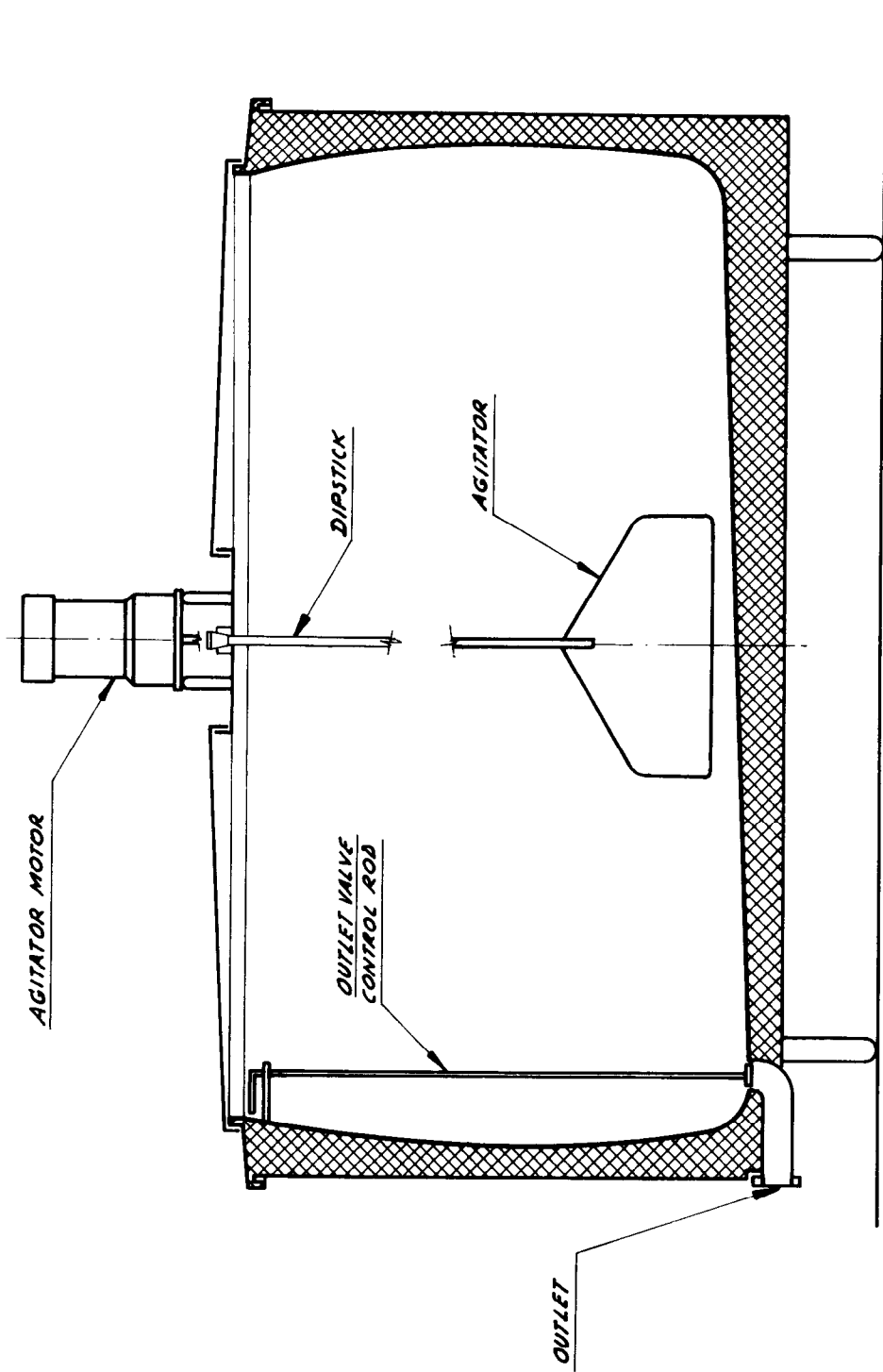
FIGURE 8/10 - 1



Pioneer Farm Milk Tank — 300 Gallons Capacity

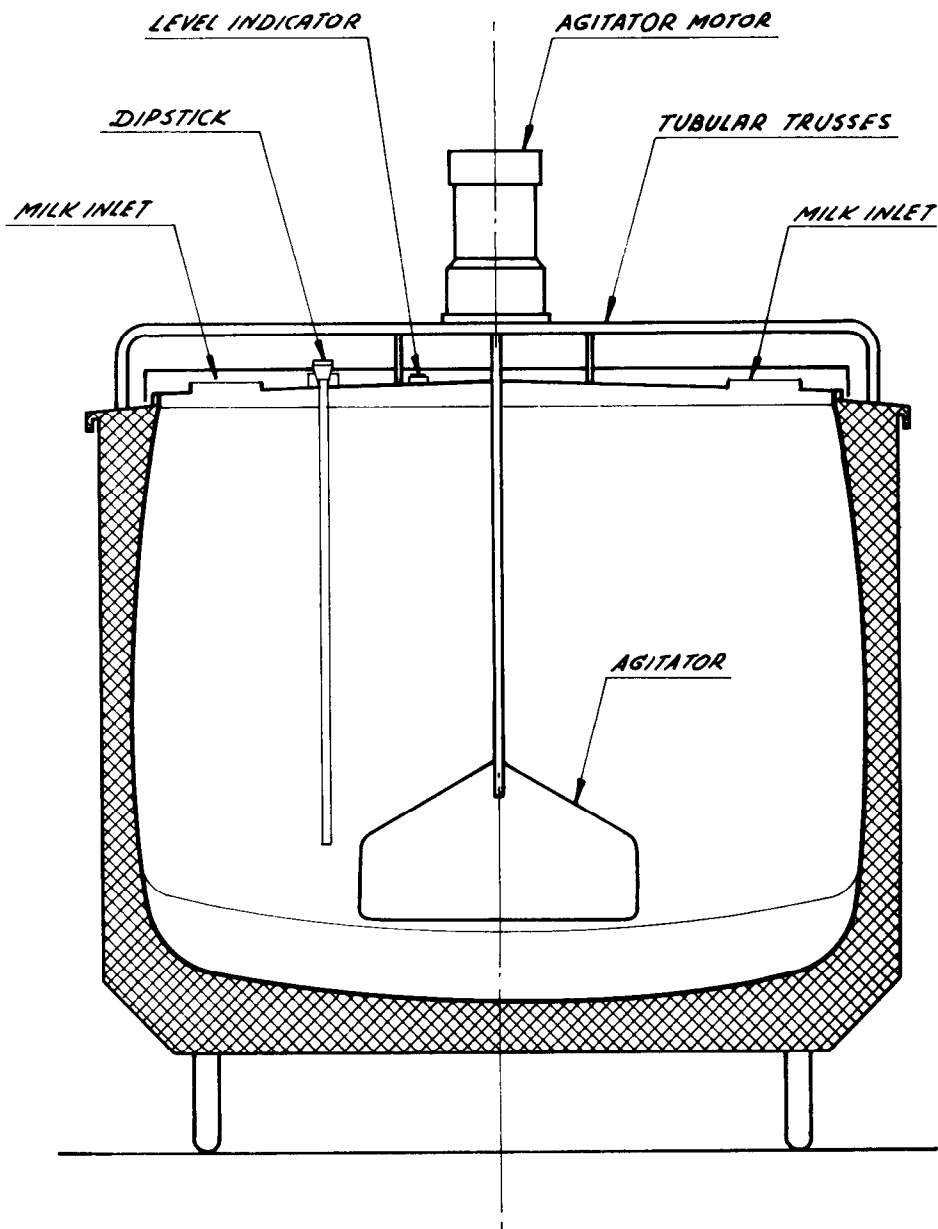
11/5/71

FIGURE 8/10 - 2



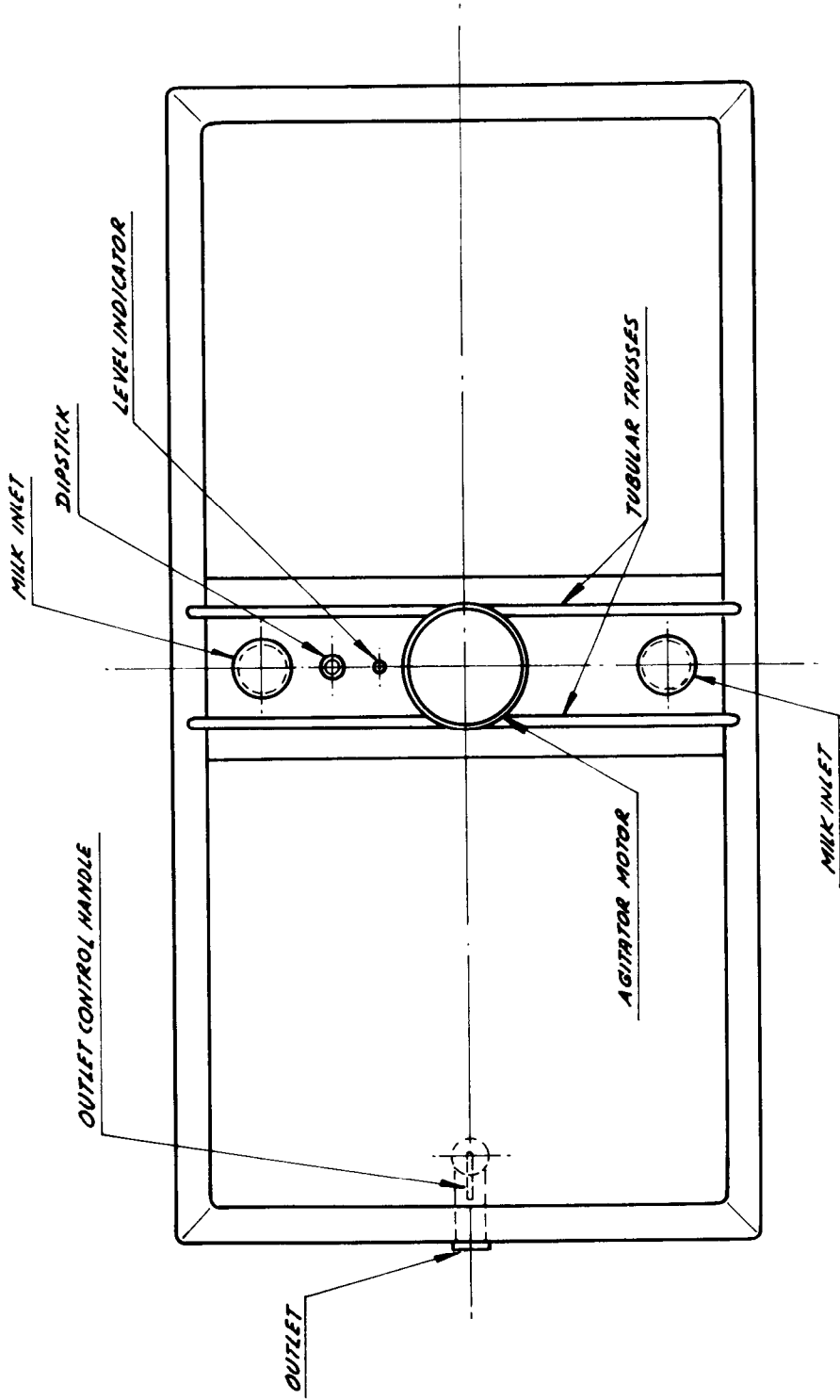
Pioneer Farm Milk Tank — Cross-sectional Elevation — Side

FIGURE 8/10 - 3



Pioneer Farm Milk Tank — Cross-sectional Elevation — End  
11/5/71

FIGURE 8/10 - 4



Pioneer Farm Milk Tank — Plan View