

National Standards Commission

12 Lyonpark Road, North Ryde NSW

Cancellation Certificate of Approval

No 8/1

Issued under Regulation 60
of the
National Measurement Regulations 1999


This is to certify that the approval for use for trade granted in respect of the

Mytton's Farm Milk Tank and Variants

submitted by Mytton's Ltd
113-141 York Street
South Melbourne VIC 3205

has been cancelled in respect of new instruments as from 1 January 2002.

Signed by a person authorised under Regulation 60
of the National Measurement Regulations 1999 to
exercise the powers and functions of the Commission
under this Regulation.





COMMONWEALTH OF AUSTRALIA

NATIONAL STANDARDS COMMISSION

Weights and Measures
(National Standards)
Act 1960-1966

Weights and Measures
(Patterns of Instruments)
Regulations

Certificate of Approval

CERTIFICATE NUMBER 8/1

This Certificate replaces Certificate No 8/1 dated 19th April, 1971. *

In respect of the pattern of

Mytton's Farm Milk Tank and Variants.

Submitted and
manufactured by:

Mytton's Ltd. ,
113-141 York Street,
South Melbourne,
Victoria. 3205.

Manufactured by:

Mytton Grosvenor Ltd. ,
125 York Street,
South Melbourne,
Victoria. 3205.

This is to certify that the pattern and variants of the instrument illustrated and described in this Certificate have been examined by the National Standards Commission under the provisions of the abovementioned Regulations and have been approved as being suitable for use for trade.

The pattern and variants 1 to 5 were approved on 19th September, 1966, variant 6 was approved on 27th July, 1967, and variant 8

* NOTE: Figures 8/1 - 1 to 6 of the previous issue form part of the Certificate and must be retained.

31/12/71

Cont'd over

on 26th April, 1968; variant 7 was approved on 12th December, 1967, and withdrawn on 16th December, 1971.

Approval was granted on condition that all instruments made in conformity with this Certificate:

1. are appropriately marked NSC No 8/1; and
2. comply with the General Specifications for Weighing and Measuring Instruments to be Used for Trade.

This Certificate comprises:

Pages 1 to 4 dated 31st December, 1971.

Figures 8/1 - 1 to 6 dated 19th April, 1971.

Date of issue 31st December, 1971.

Signed



A person authorised by the Commission
to sign Certificates under the
abovementioned Regulations.

DESCRIPTION OF PATTERN

The pattern (see Figure 1) is of a farm milk tank of 400 gallons capacity.

It consists of a vertical stainless steel cylinder of circular cross-section, 5 feet $\frac{1}{2}$ inch internal diameter, sheathed in an outer casing of stainless steel; the cavity between is filled with insulating material (see Figure 2). The bottom of the tank, which is refrigerated, slopes towards the outlet. The tank is supported on four adjustable legs.

A bridge which spans the top of the tank slopes downward from the centre and carries a dial thermometer, an agitator motor, a circular level indicator which is not more than 12 inches from the inside edge of the tank, and a dipstick in a tapered socket, located in the vertical axis of the tank (see Figure 3). Supported from the bridge are two hinged lids and the discharge valve.

The liquid level at capacity is not less than $1\frac{1}{2}$ inches from the brim of the tank.

DESCRIPTION OF VARIANTS

1. In other capacities, namely:

<u>Capacity</u>	<u>Inside Diameter</u> (\pm 1 inch)
50 to 250 gallons	4 ft 0 in
*201 to 500 gallons	5 ft $\frac{1}{2}$ in
502 to 650 gallons	5 ft 9 in

* Includes the pattern.

Tanks of 5 feet 9 inches diameter have the bridge stiffened by welding two parallel stainless steel tubes to it with spacing pieces near the centre of each tube (see Figure 4).

2. Calibrated in pounds.
3. With a removable immersed evaporator instead of the refrigerated bottom.

-
4. Without the refrigerated bottom.
 5. Without the refrigerated bottom and with no insulation or outer casing.
 6. In other capacities, namely:

<u>Capacity</u>	<u>Inside Diameter</u> (± 1 inch)
201 to 500 gallons	5 ft 9 in

The tanks have the bridge stiffened as described in variant 2.

7. (Refer General Notes).
8. With the dipstick located at one end of the bridge with its centre approximately 2 inches from the inside edge of the tank (see Figures 5 and 6). The level indicator is in the form of two tubular spirit levels mounted at right angles.

GENERAL NOTES

Variant 7, which referred to markings with various trade names, was withdrawn because these are not relevant to suitability for use for trade.

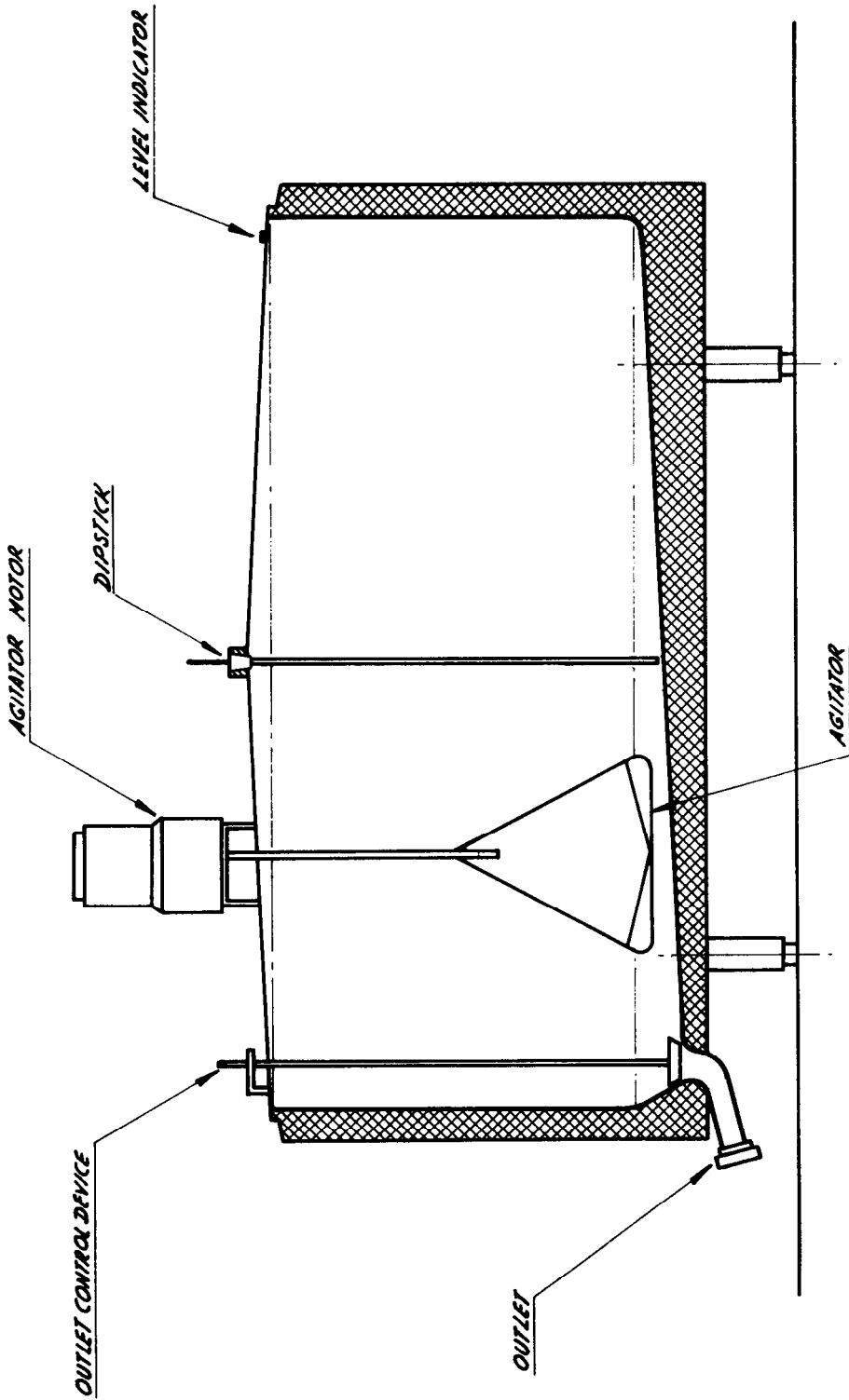
FIGURE 8/1 - 1



Mytton's Farm Milk Tank — 400 Gallons Capacity

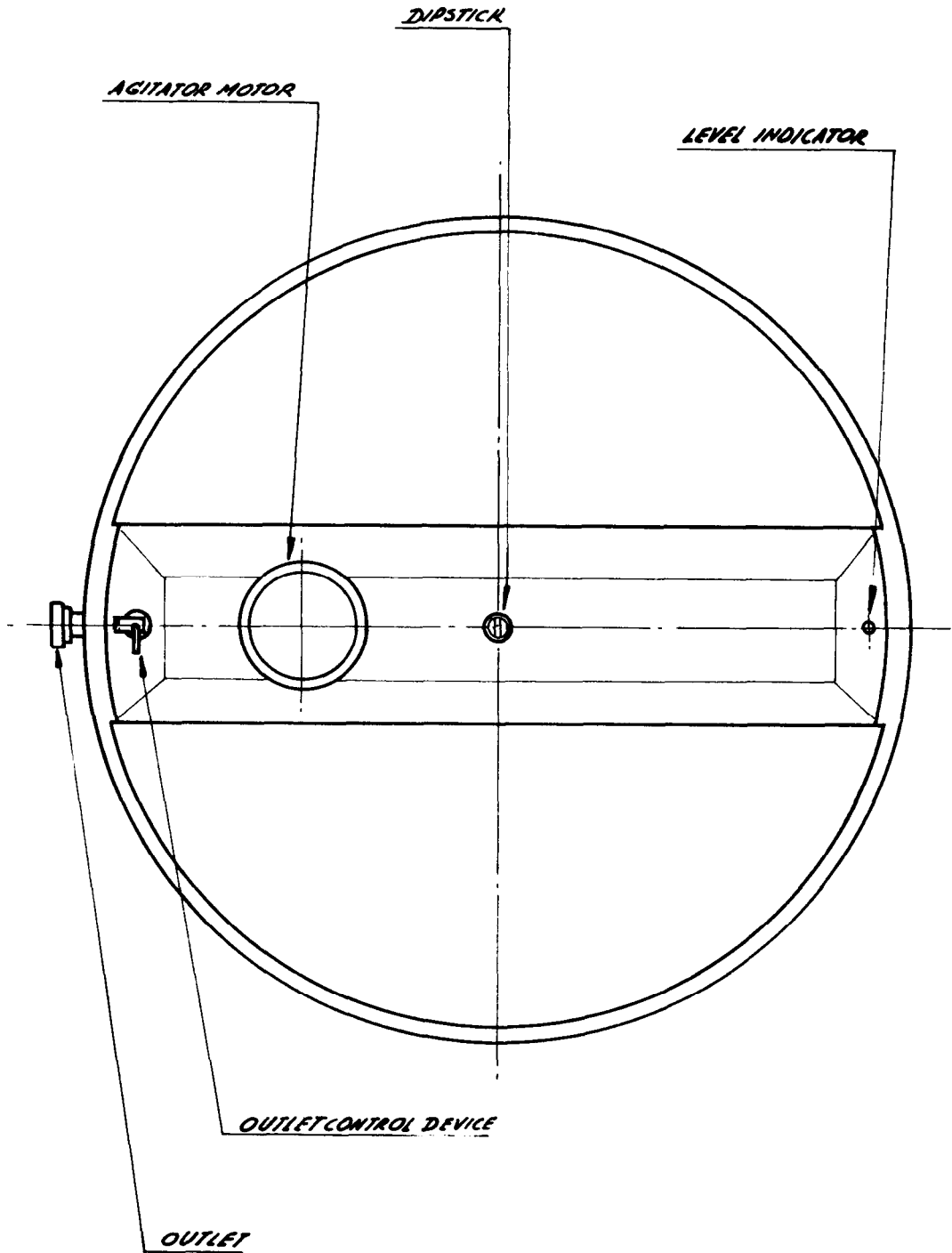
19/4/71

FIGURE 8/1 - 2



Mytton's Farm Milk Tank -- Cross-sectional Elevation

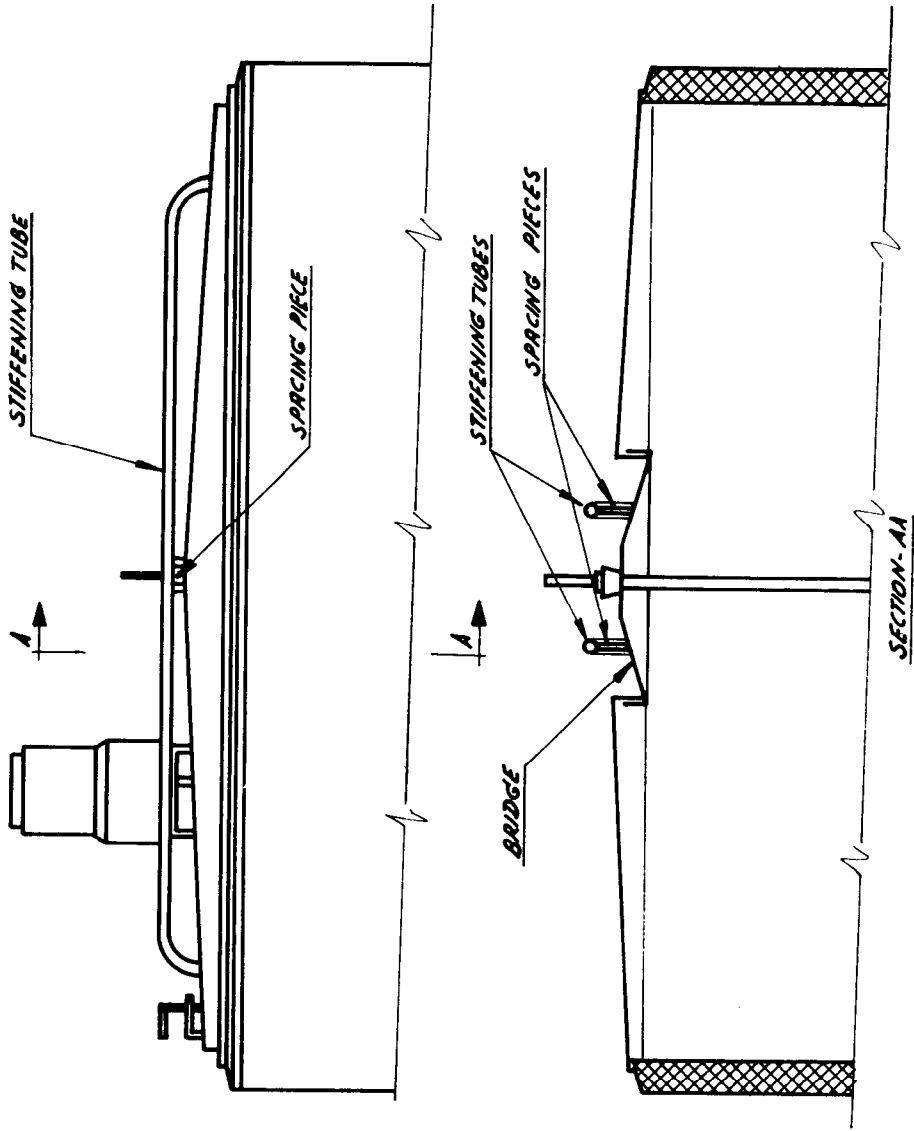
FIGURE 8/1 - 3



Mytton's Farm Milk Tank — Plan View —
Dipstick in Vertical Axis

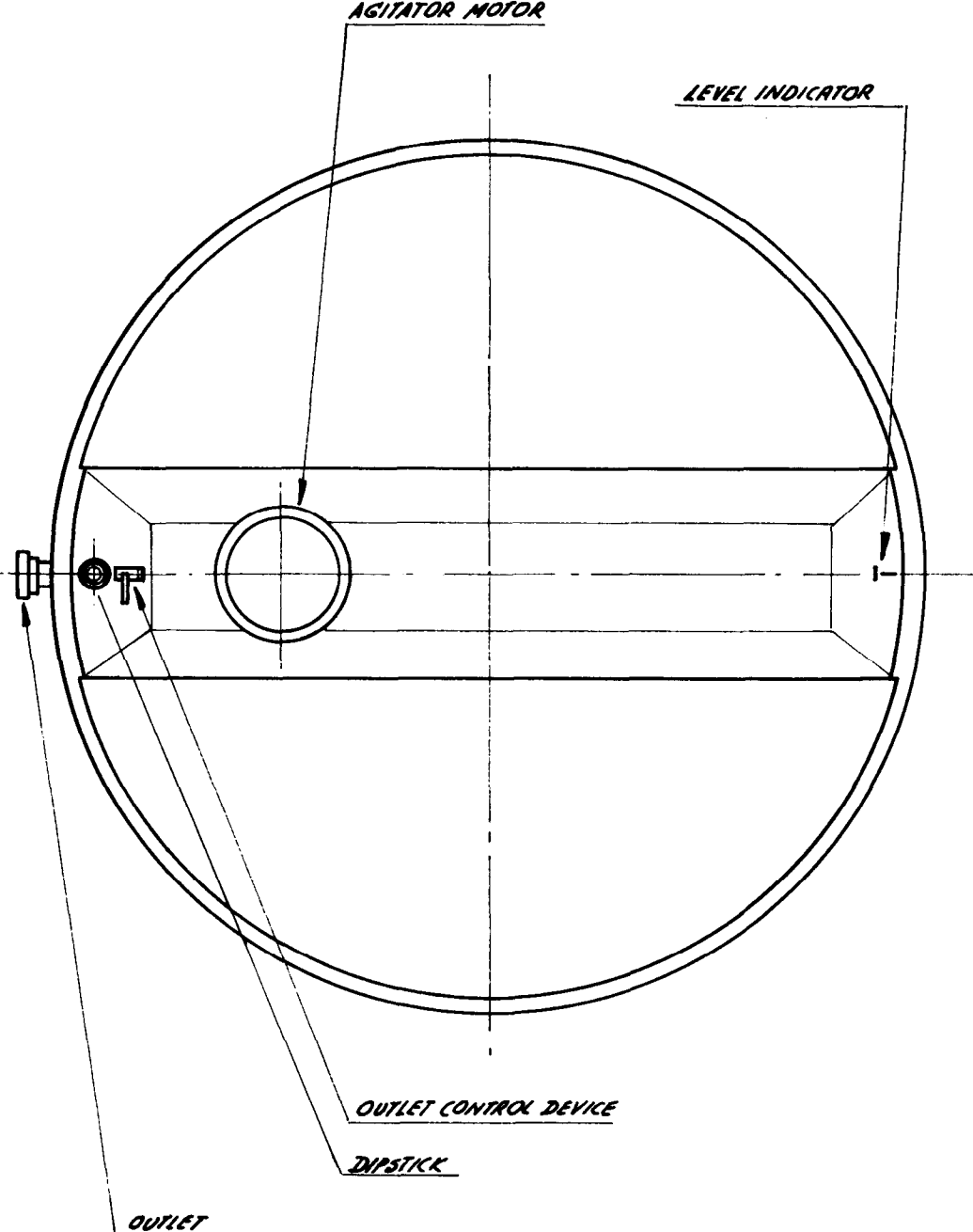
19/4/71

FIGURE 8/1 - 4



Mytton's Farm Milk Tank — Cross-sectional Elevation — Stiffened Bridge

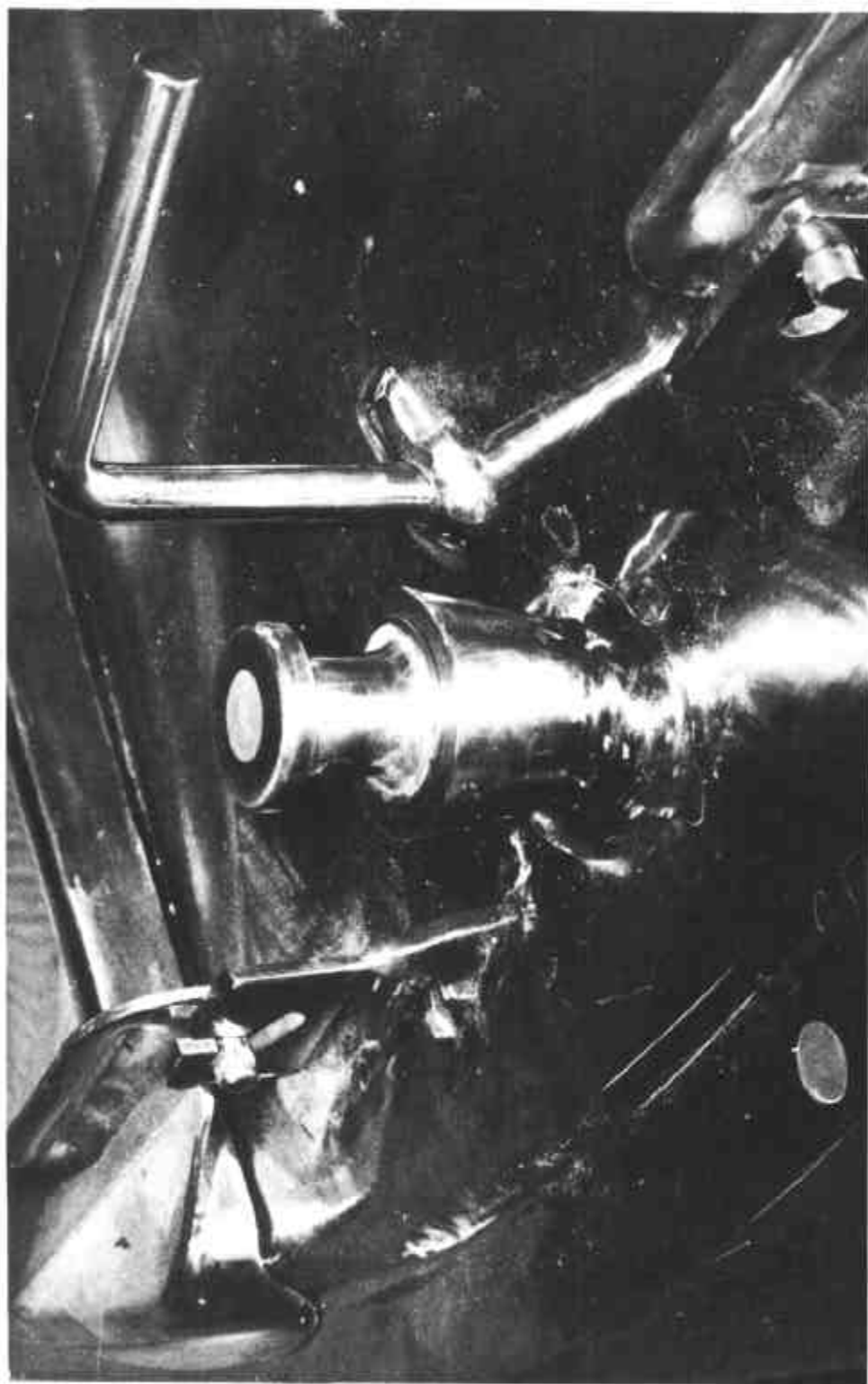
FIGURE 8/1 - 5



Mytton's Farm Milk Tank — Plan View —
Dipstick at End of Bridge

19/4/71

FIGURE 8/1 - 6



Mytton's Farm Milk Tank — Dipstick on End of Bridge

19/4/71