



Australian Government
Department of Industry,
Innovation and Science

National Measurement Institute

Certificate of Approval NMI 8/88

Issued by the Chief Metrologist under Regulation 60
of the
National Measurement Regulations 1999

This is to certify that an approval for use for trade has been granted in respect of the instruments herein described.

Packo Fullwood Model REM/DX 8200 Milk Tank

submitted by Dairy-Tech Refrigeration
(formerly submitted by Packo Fullwood Pty Ltd)
28-30 Yarragon Road
Leongatha VIC 3953

NOTE: This Certificate relates to the suitability of the pattern of the instrument for use for trade only in respect of its metrological characteristics. This Certificate does not constitute or imply any guarantee of compliance by the manufacturer or any other person with any requirements regarding safety.

This approval has been granted with reference to document NMI M 4, *Pattern Approval Specifications for Milk Tanks*, dated February 2006.

This approval becomes subject to review on **1/01/21**, and then every 5 years thereafter.

DOCUMENT HISTORY

Rev	Reason/Details	Date
0	Pattern & variant 1 approved – interim certificate issued	10/12/07
1	Pattern & variant 1 approved – certificate issued	16/02/08
2	Pattern & variant 1 amended (submittor), reviewed & updated – certificate issued	20/05/16

CONDITIONS OF APPROVAL

General

Instruments purporting to comply with this approval shall be marked with pattern approval number 'NMI 8/88' and only by persons authorised by the submittor.

It is the submittor's responsibility to ensure that all instruments marked with this approval number are constructed as described in the documentation lodged with the National Measurement Institute (NMI) and with the relevant Certificate of Approval and Technical Schedule. Failure to comply with this Condition may attract penalties under Section 19B of the National Measurement Act and may result in cancellation or withdrawal of the approval, in accordance with document NMI P 106.

Signed by a person authorised by the Chief Metrologist to exercise their powers under Regulation 60 of the *National Measurement Regulations 1999*.

A handwritten signature in black ink, appearing to read 'Dr A Rawlinson', with a horizontal line underneath.

Dr A Rawlinson

TECHNICAL SCHEDULE No 8/88

1. Description of Pattern **approved on 10/12/07**

A Packo Fullwood model REM/DX 8200 horizontal cylindrical refrigerated milk tank of 8200 L capacity (Table 1 and Figure 1) incorporating a dipstick for the measurement of the volume. May also be known as a Dairy-Tech Refrigeration tank of the same model.

1.1 Details

- (i) The tank is a horizontal stainless steel cylinder sheathed in an outer casing of stainless steel; the cavity between is filled with polyurethane insulating material.
- (ii) A top mounted access hole is provided at the outlet end of the tank and incorporates a dipstick socket and dipstick (Figure 1). The tank is fitted with a ladder to allow access to the dipstick.
- (iii) The dipstick is graduated in 20 L increments.
- (iv) Levelling is effected by means of 8 adjustable legs, with reference to the datum level marks permanently marked on the tank. Each leg has provision for fixing to the floor. At least one leg at each end has provision for sealing, after levelling.

The tank, when level, allows all contents to drain towards the outlet.

- (v) An agitator is provided which is switched off during measurement of the volume of the contents.

1.2 Sealing Provision

Provision is made for the adjustable legs to be sealed after the tank has been levelled.

1.3 Markings

- (a) The following data is marked on the nameplate permanently attached to the calculator/indicator in a clearly visible location:

Manufacturer's mark, or name written in full
Model number
Serial number
Pattern approval mark	8/88
Maximum capacity L
Year of manufacture

- (b) The dipstick is marked with the following:

Manufacturer's mark or name written in full
Serial number corresponding to the serial number of the tank
Datum level L
Scale interval L

1.4 Verification Provision

Provision is made for the application of a verification mark.

2. Description of Variant 1

approved on 10/12/07

Certain models and capacities as listed in Table 1. The pattern (model RED/DX 8200) is shown in **bold**.

TABLE 1

Model Number	Maximum Capacity (litres)	Number of Legs	Scale Number Interval (litres)
REM/DX 5000	5 000	4	10
REM/DX 6150	6 150	6	20
REM/DX 7200	7 000	6	20
REM/DX 8200	8 200	8	20
REM/DX 9000	9 000	8	20
REM/DX 10000	10 000	8	20
REM/DX 12000	12 000	10	20
REM/DX 15000	17 500	12	50

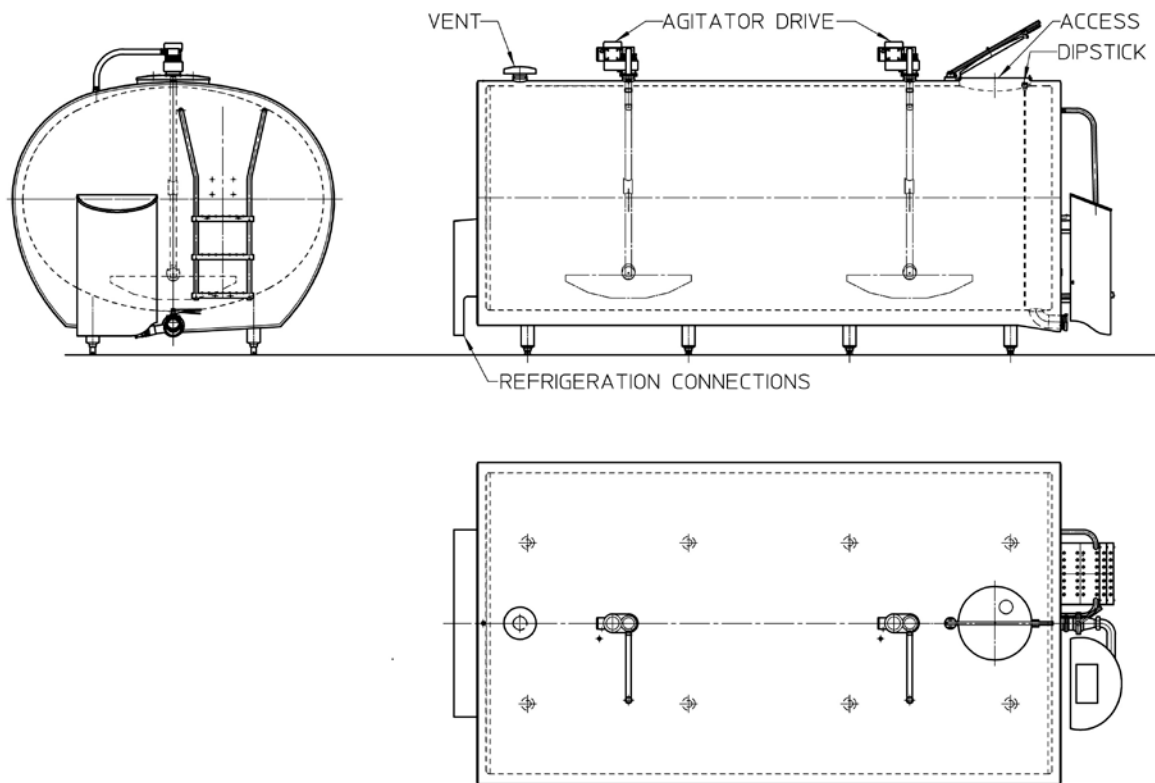
TEST PROCEDURE

Instruments shall be tested in accordance with any relevant tests specified in the National Instrument Test Procedures.

Maximum Permissible Errors

The maximum permissible errors are specified in the *National Trade Measurement Regulations 2009*.

FIGURE 8/88 – 1



Packo Fullwood Model RED/DX 8200 Milk Tank (Pattern)

~ End of Document ~