

Correspondence: Executive Officer  
P.O. Box 282 NORTH RYDE  
N.S.W. 2113  
Telegrams: NATSTANCOM SYDNEY  
Telephone: 888 3922

CERTIFICATE OF APPROVAL No 7/2

~~CANCELLED~~  
~~CANCELLED~~

0/3

This is to certify that the pattern of the  
Bizerba Weighing Instrument (Counting) Model Z20  
submitted by Globus-Bizerba Pty Ltd,  
150-152 Edinburgh Road,  
Marrickville, New South Wales, 2204,

has been approved under the Weights and Measures (Patterns of Instruments)  
Regulations as being suitable for use for trade.

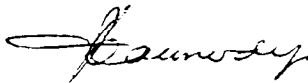
Date of Approval: 26 August 1975

The pattern is described in Technical Schedule No 7/2, and in drawings and  
specifications lodged with the Commission.

The approval is subject to review on or after 1 March 1980.

All instruments conforming to this approval shall be marked with the  
approval number "NSC No 7/2".

Signed



Executive Officer



# NATIONAL STANDARDS COMMISSION

## TECHNICAL SCHEDULE No 7/2

Pattern: Bizerba Weighing Instrument (Counting) Model Z20

Submitter: Globus-Bizerba Pty Ltd,  
150-152 Edinburng Road,  
Marrickville, New South Wales, 2204.

Date of Approval: 26 August 1975

All instruments conforming to this approval shall be marked "NSC No 7/2".

### Description:

The pattern (see Figures 1 and 2) is a Bizerba Z20 double-ratio counting instrument of capacity 20 kg by 10 g, with a centre-zero weight reading face of capacity  $\pm 20$  g (see Figure 3). Under-and-over weight indications are denominated by minus (-) and plus (+) signs respectively.

Two ratio pans are permanently fixed to the instrument, one a 10 : 1 ratio and the other a 100 : 1 ratio.

An ungraduated tare bar of capacity 2 kg is provided.

The zero is adjusted by a knob on the top of the housing.

The instrument is provided with a level indicator and three adjustable feet. Adjacent to the level indicator is a notice advising that the instrument must be level when in use.

The instrument is marked adjacent to the weight indicator:

III

Max	=	20 kg
Min	=	0,2 kg
d	=	10 g
T	=	+ 2 kg

"not for retail counter use"; "not to count items of mass less

than 0,010 kg"; and "not to be used as a weighing instrument".

The approval also includes:

1. ratio pans of ratios of 1 : 9 - 1 : 99, and 1 : 12 - 1 : 144;
2. capacity 30 kg by 20-g graduations with an additive tare capacity of 3 kg;
3. capacity 5 kg by 5-g graduations; and
4. capacity 2 kg by 2-g graduations.

Note: The instrument markings are varied appropriately with the changes in capacity. "Min" in all cases is equal to 20d.

Special Tests:

1. The mass indicated should be 1 graduation when a load equal to 1 graduation is placed on the counting pan.
2. The mass indicated should be zero  $\pm$  1 graduation when:
  - (a) a load equal to 1 graduation is placed in the 10 : 1 ratio pan and a load equal to 10 graduations is placed in the counting pan;
  - (b) a load equal to 1 graduation is placed in the 100 : 1 ratio pan and a load equal to 100 graduations is placed in the counting pan;
  - (c) a load equal to  $\frac{\text{Max}}{10}$  is placed in the 10 : 1 ratio pan and a load equal to Max is placed in the counting pan; and
  - (d) a load equal to  $\frac{\text{Max}}{100}$  is placed in the 100 : 1 ratio pan and a load equal to Max is placed in the counting pan.

Note: The test loads should be varied appropriately when the ratio pans are 1 : 9 - 1 : 99, or 1 : 12 - 1 : 144.

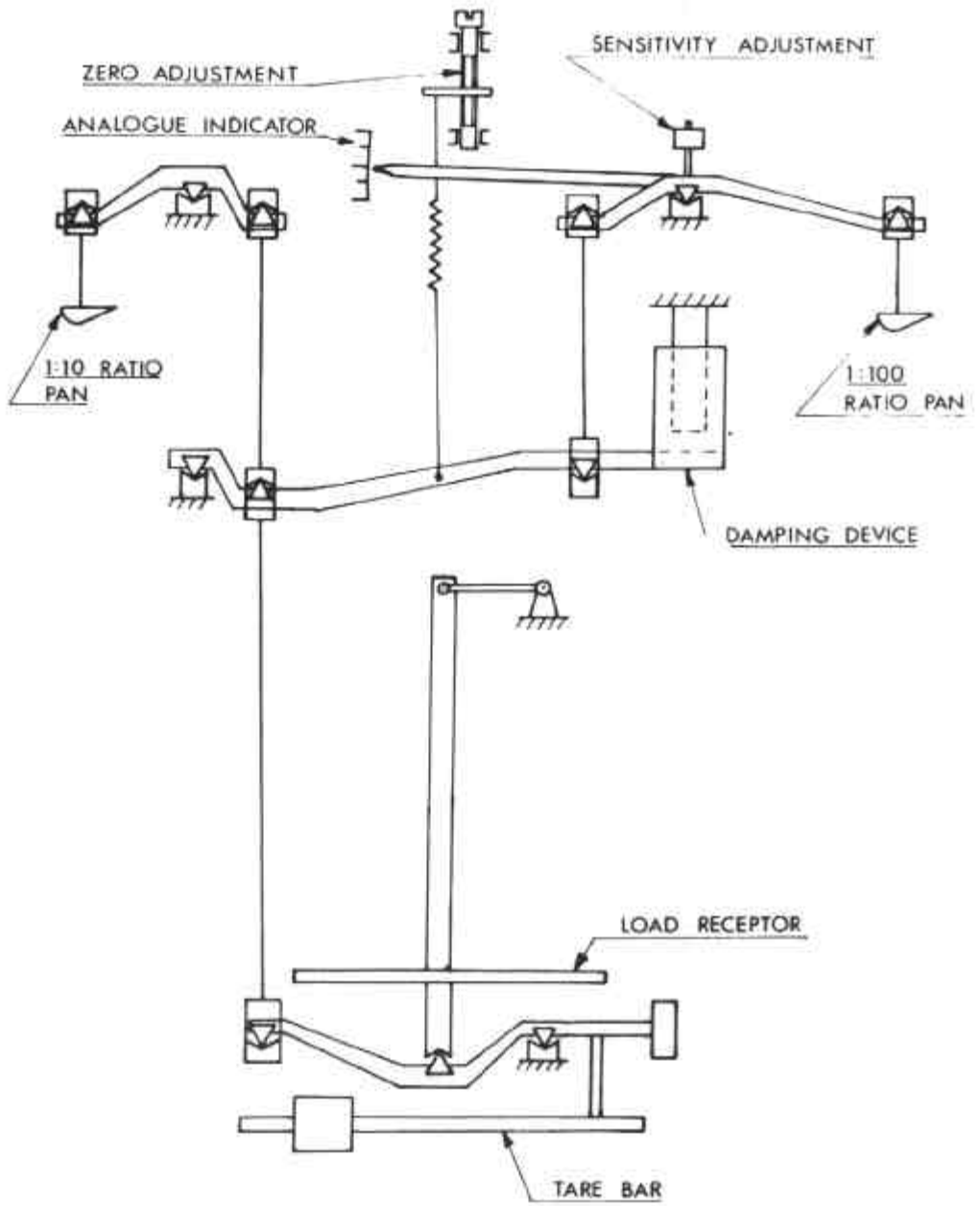
FIGURE 7/2 - 1



23/9/77

Bizerba 220

FIGURE 7/2 - 2



Bizerba Z20 — Schematic Diagram

23/9/77

FIGURE 7/2 - 3



Bizerba Z20 — Weight Reading Face