



CANCELLED

COMMONWEALTH OF AUSTRALIA

NATIONAL STANDARDS COMMISSION

Weights and Measures

(National Standards)

Act 1960-1964

Weights and Measures

(Patterns of Instruments)

Regulations

Certificate of Approval

CERTIFICATE NUMBER 6/9C/6

In respect of the pattern of

ASE Self-indicating Wall-mounted Scale and Variants 1 to 4.

Submitted by: Agta Pty. Ltd.,
616 South Road,
Glandore,
South Australia. 5037.

Manufactured by: August Sauter KG,
Ebingen,
West Germany.

This is to certify that the pattern and variants of the instrument described and illustrated in this Certificate have been examined by the National Standards Commission under the provision of the abovementioned Regulations and have been approved as being suitable for use for trade.

Approval was granted for the pattern and variants 1 to 4 on 8th June, 1967.

Approval was granted on condition that all instruments made in conformity with the pattern and variants:

1. are appropriately marked NSC No 6/9C/6; and
2. comply with the General Specifications for Weighing and Measuring Instruments to be Used for Trade.

28/5/70

Cont'd over

This Certificate comprises:

Pages 1 to 3 dated 28th May, 1970.

Figures 6/9C/6 - 1 to 3 dated 28th May, 1970.

Date of issue 28th May, 1970.

Signed

A handwritten signature in cursive script, reading "Ian Hoerlein".

A person authorised by the Commission
to sign Certificates under the
abovementioned Regulations.

28/5/70

DESCRIPTION OF PATTERN

The pattern is of a 400 lb capacity wall-mounted scale with two load receptors, one a cantilever hook and the other a foldaway tray (see Figure 1).

The basework consists of a vertically mounted movable framework which carries the load receptors. The framework is constrained in the vertical position by a link mechanism in tension at the top and a knife-edge pivoted separator at the bottom, shown schematically in Figure 2, which, together with the fixed wall bracket, form a parallelogram allowing free vertical movement of the load. Side restraint is provided at the top of the frame by two flexible stays in tension. At the bottom the friction plates of the knife-edge bearings on the separator frame restricts sideways movement.

The load movement is transmitted to the headwork by two second-order intermediate levers seen in Figure 3. The headwork has a two-revolution dial to indicate 400 lb with $\frac{1}{2}$ lb graduations and is described in Certificate No 6/9C/1.

DESCRIPTION OF VARIANTS

1. The pattern in other capacities less than 400 lb.
2. The pattern fitted with the quick-taring device described in Certificate No 6/9C/1.
3. The pattern and variants 1 and 2 without the foldaway tray.
4. The pattern and variants 1 and 2 without the weighing hook.

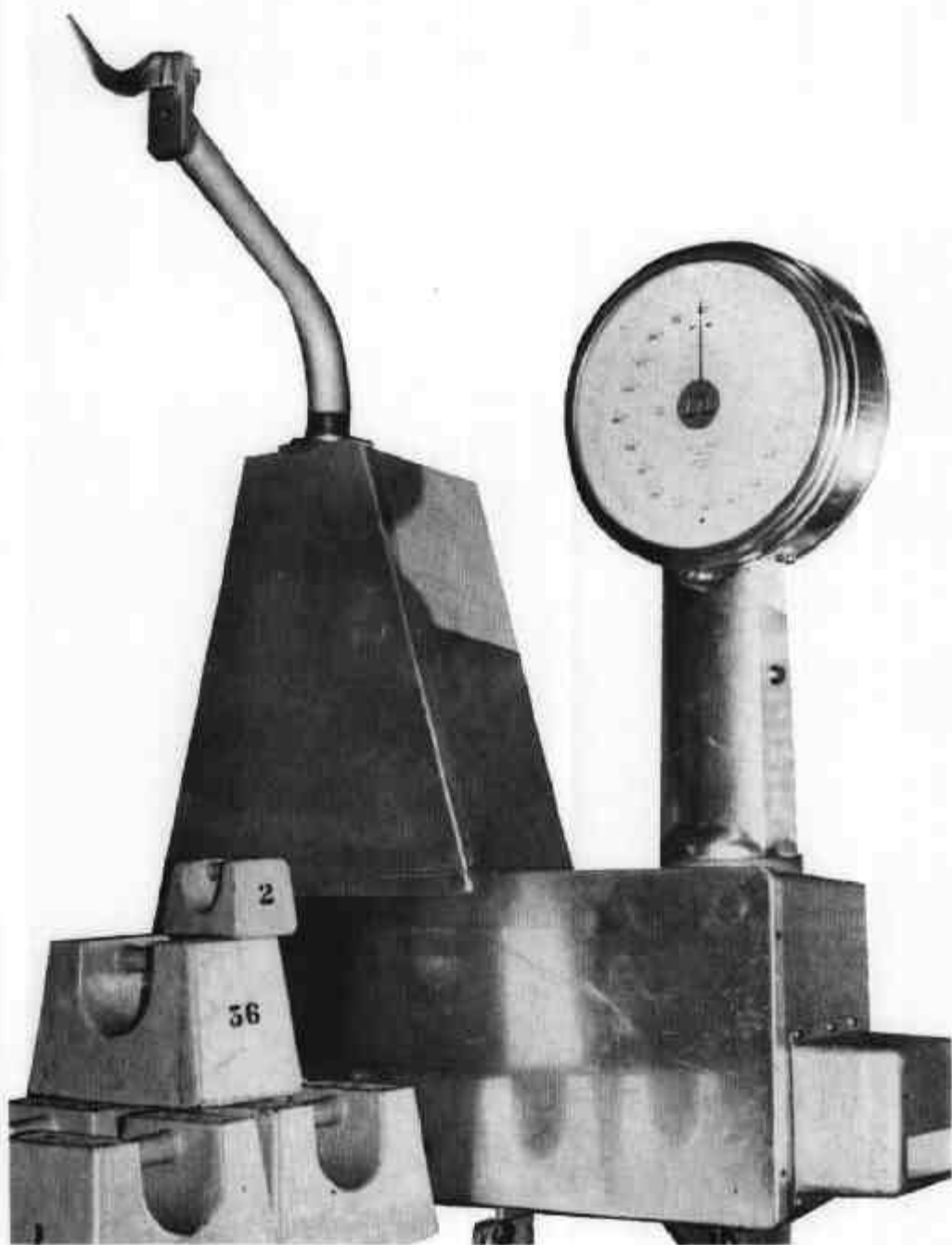
GENERAL NOTES

Notice of approval of the pattern and variants 1 to 4 described in this Certificate was given in Memorandum of Approval No 72 dated 15th June, 1967.

Notice of approval of the headwork and quick-taring device approved in Certificate No 6/9C/1, referred to in the pattern and variant 2, was given in Memorandum of Approval No 18 dated 28th September, 1966.

28/5/70

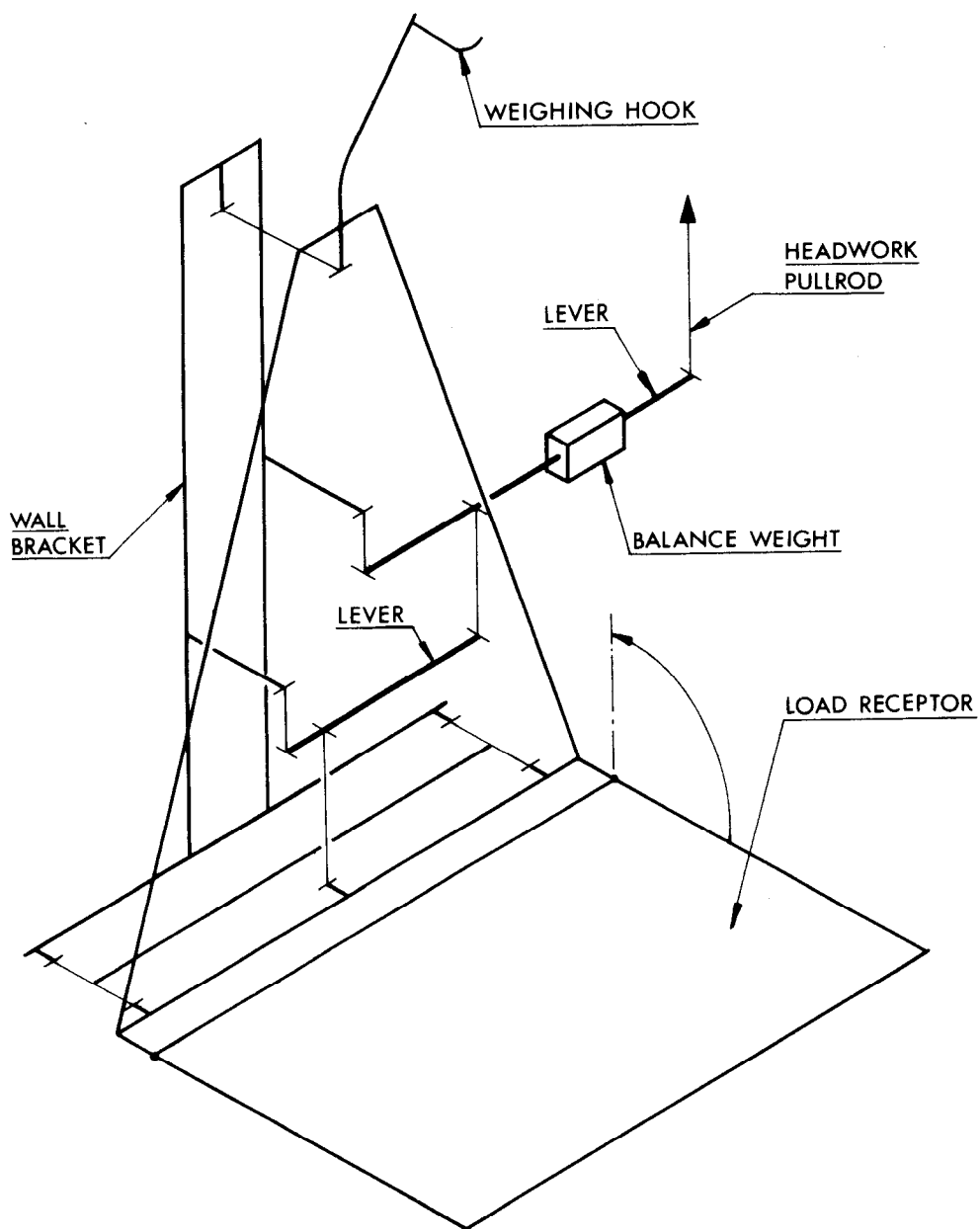
FIGURE 6/9C/6 - 1



ASE Wall Scale

28/5/70

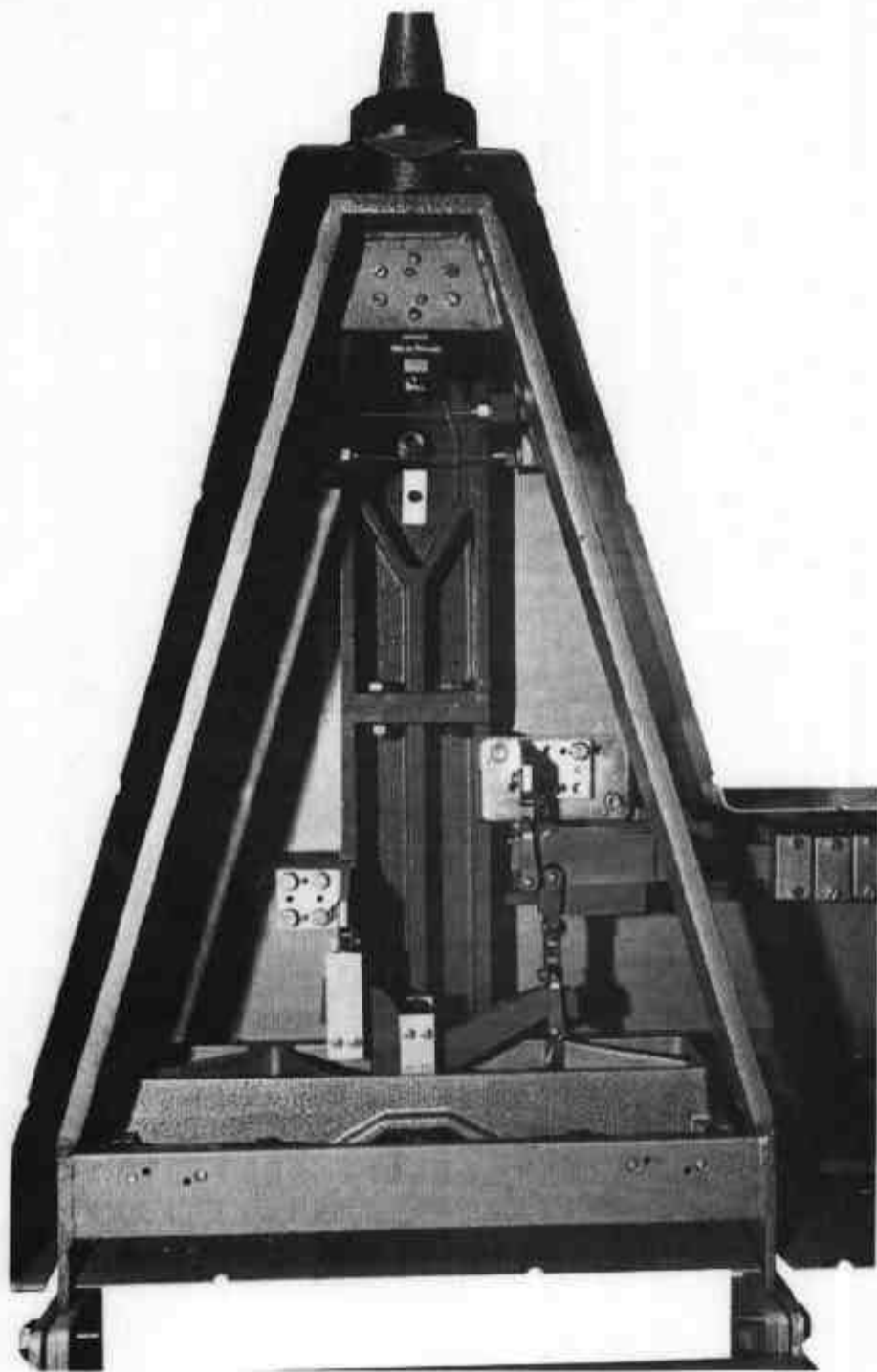
FIGURE 6/9C/6 - 2



Lever Diagram

28/5/70

FIGURE 6/9C/6 - 3



ASE Wall Scale - Basework

28/5/70