

National Standards Commission



Certificate of Approval

No 6/9C/247

Issued under Regulation 9
of the
National Measurement (Patterns of Measuring Instruments) Regulations

This is to certify that an approval for use for trade has been granted in respect of the

Associated Scales Model PB3000 Weighing Instrument

submitted by Associated Scale Services Pty Ltd
Unit 3/71 Rodwell Street
Coopers Plains QLD 4108.

NOTE: This Certificate relates to the suitability of the pattern of the instrument for use for trade only in respect of its metrological characteristics. This Certificate does not constitute or imply any guarantee of compliance by the manufacturer or any other person with any requirements regarding safety.

CONDITIONS OF APPROVAL

This approval is subject to review on or after 1 July 1998.
This approval expires in respect of new instruments on 1 July 1999.

Instruments purporting to comply with this approval shall be marked NSC No 6/9C/247 and only by persons authorised by the submittor.

Auxiliary devices used with this instrument shall comply with the requirements of General Supplementary Certificate No S1/0/A.

It is the submitter's responsibility to ensure that all instruments marked with this approval number are constructed as described in the documentation lodged with the Commission and with the relevant Certificate of Approval and Technical Schedule. Failure to comply with this Condition may attract penalties under Section 19B of the National Measurement Act and may result in cancellation or withdrawal of the approval, in accordance with the Commission's Document 106.

The values of the performance criteria (maximum number of scale intervals etc.) applicable to the instrument shall be within the limits specified herein and in any approval documentation for the components where they are approved separately.

The Commission reserves the right to examine any instrument or component of an instrument purporting to comply with this approval.

The pattern as approved herein or with substitute load cells and/or indicator, and in other capacities, shall comply with General Certificate No 6B/0.

DESCRIPTIVE ADVICE

Pattern: approved 1 June 1993

- An Associated Scales model PB3000 self-indicating weighing instrument of 3000 kg maximum capacity.

Variant: approved 1 June 1993

1. With an alternative load cell mounting and known as a model PL3000.

Technical Schedule No 6/9C/247 describes the pattern and variant 1.

Variants: approved 16 November 1994

2. A model PB3000 of 300 kg maximum capacity.
3. A model PL3000 of 300 kg maximum capacity.

Technical Schedule No 6/9C/247 Variation No 1 describes variants 2 and 3.

FILING ADVICE

Certificate of Approval No 6/9C/247 dated 6 October 1993 is superseded by this Certificate and may be destroyed.

The documentation for this approval now comprises:

Certificate of Approval No 6/9C/247 dated 22 December 1994
Technical Schedule No 6/9C/247 dated 6 October 1993 (incl. Test
Procedure)
Technical Schedule No 6/9C/247 Variation No 1 dated 22 December 1994
Figures 1 to 4 dated 6 October 1993

Signed and sealed by a person authorised under Regulation 9 of the National Measurement (Patterns of Measuring Instruments) Regulations to exercise the powers and functions of the Commission under this Regulation.

A handwritten signature in black ink, appearing to read 'J. Birch', is written in a cursive style.



National Standards Commission

TECHNICAL SCHEDULE No 6/9C/247

Pattern: Associated Scales Model PB3000 Weighing Instrument.

Submittor: Associated Scale Services Pty Ltd
Unit 3/71 Rodwell Street
Coopers Plains QLD 4108.

1. Description of Pattern

An Associated Scales model PB3000 self-indicating weighing instrument of 3000 kg maximum capacity and approved for use with up to 3000 verification scale intervals.

1.1 Basework

The model PB3000 basework (Figure 1) has the platform directly supported by 4 load cells which are connected to the baseframe by means of ball-and-cup assemblies.

1.2 Load Cells

Four Kelba model KA-1000-C3 load cells of 1000 kg capacity are used as described in the documentation of NSC approval No S155A, and mounted as shown in Figure 2.

1.3 Indicator

A Gedge Systems model GS1650 Mk3 digital indicator is used as described in the documentation of NSC approval No S193A.

1.4 Markings

Instruments are marked with the following data, together in one location:

Manufacturer's name or mark	
Serial number	
NSC approval numbers	- instrument NSC No 6/9C/247
	- load cells NSC No S
	- indicator NSC No S
Accuracy class	III
Maximum capacity	Max kg *
Minimum capacity	Min kg *
Verification scale interval	e = kg *

* These are repeated adjacent to each reading face.

1.5 Verification/Certification Provision

Provision is made for a verification/certification mark to be applied.

1.6 Sealing Provision

Provision is made for the calibration adjustments to be sealed using the screws on the face of the indicator.

2. Description of Variant 1

With a model PL3000 basework which does not have a baseframe and where the supporting feet are fitted directly to the load cells (Figures 3 and 4).

TEST PROCEDURE

Instruments should be tested in conjunction with any tests specified in the approval documentation for the indicator used, and in accordance with any relevant tests specified in the Inspector's Handbook.

Maximum Permissible Errors at Verification/Certification

The maximum permissible errors for increasing and decreasing loads, expressed in terms of verification scale interval (e), with the instrument adjusted to zero within $\pm 0.25e$ at no load, are:

- $\pm 0.5e$ for loads from 0 to 500e;
- $\pm 1.0e$ for loads over 500e up to 2000e; and
- $\pm 1.5e$ for loads over 2000e.



National Standards Commission

TECHNICAL SCHEDULE No 6/9C/247

VARIATION No 1

Pattern: Associated Scales Model PB3000 Weighing Instrument.

Submittor: Associated Scale Services Pty Ltd
Unit 3/71 Rodwell Street
Coopers Plains QLD 4108.

1. Description of Variants

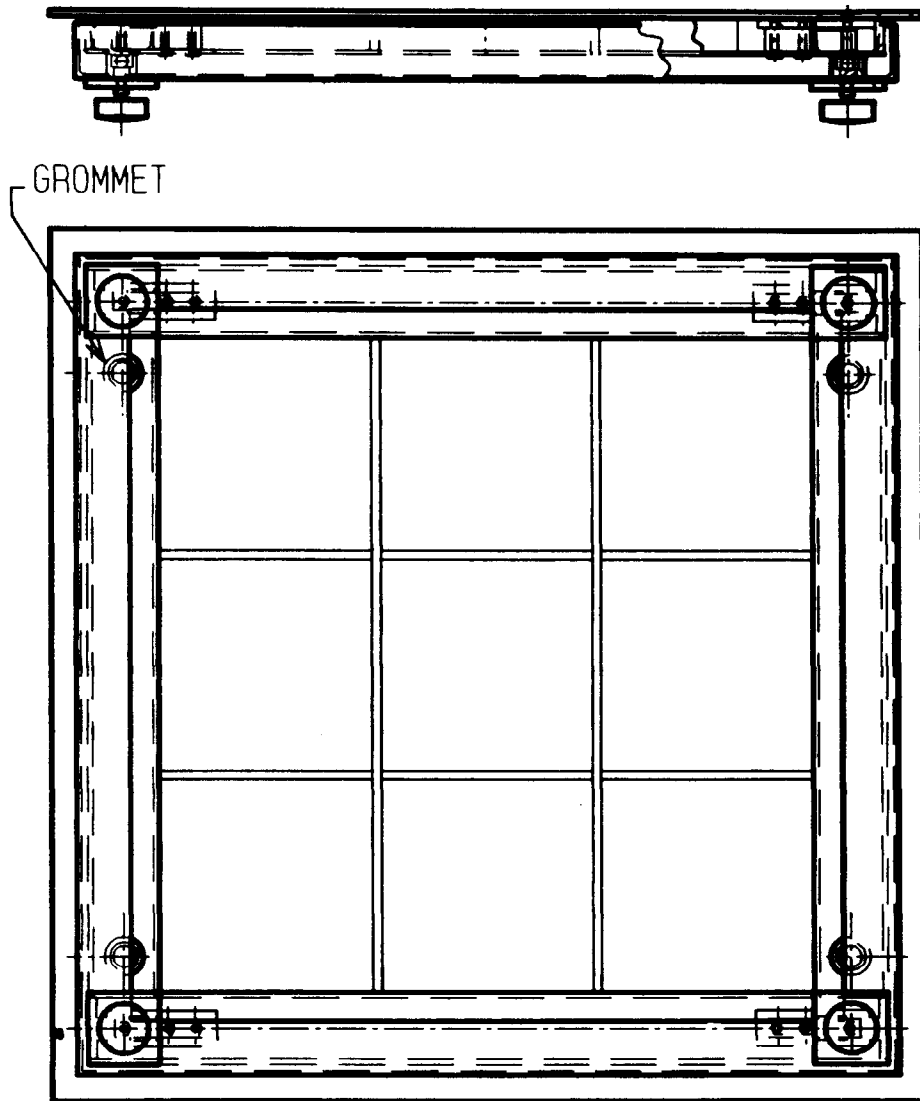
1.1 Variant 2

A model PB3000 self-indicating weighing instrument of 300 kg maximum capacity and approved for use with up to 3000 verification scale intervals.

1.2 Variant 3

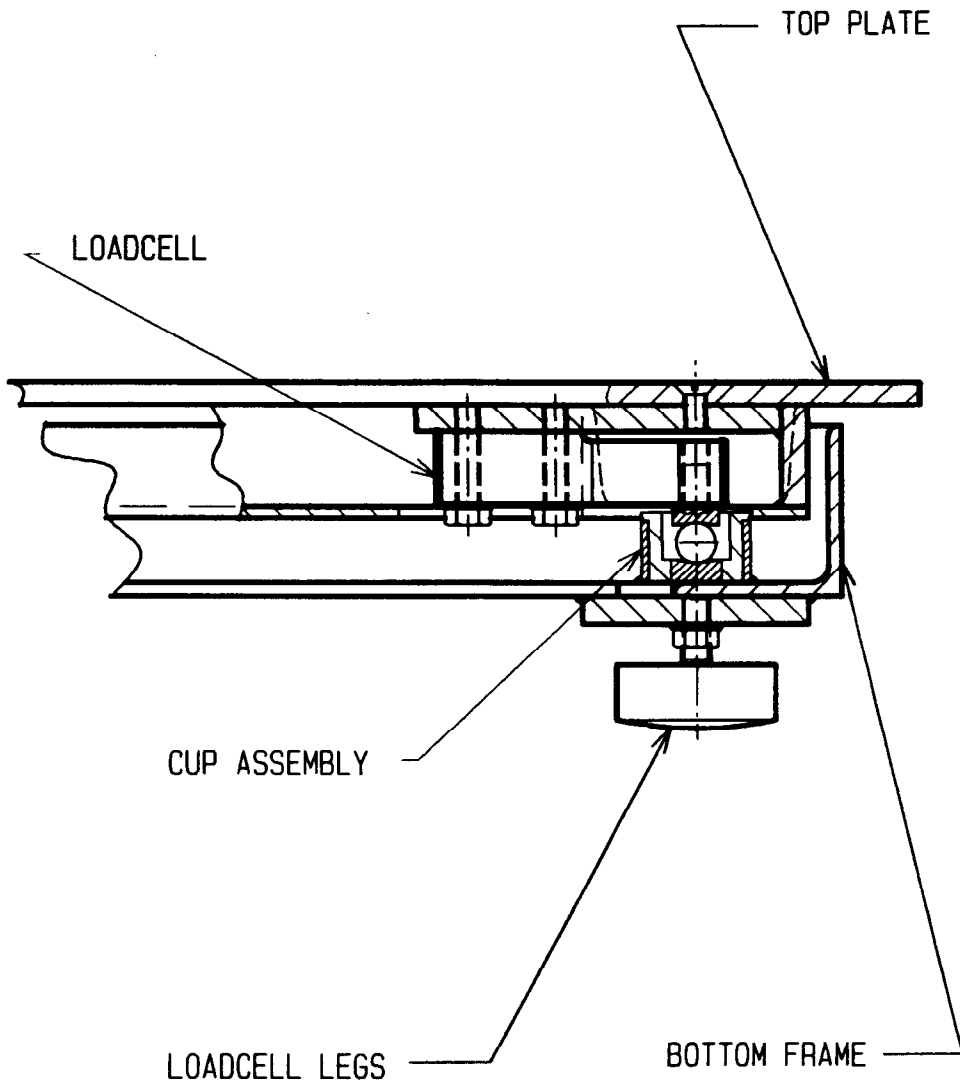
A model PL3000 self-indicating weighing instrument of 300 kg maximum capacity and approved for use with up to 3000 verification scale intervals.

FIGURE 6/9C/247 - 1



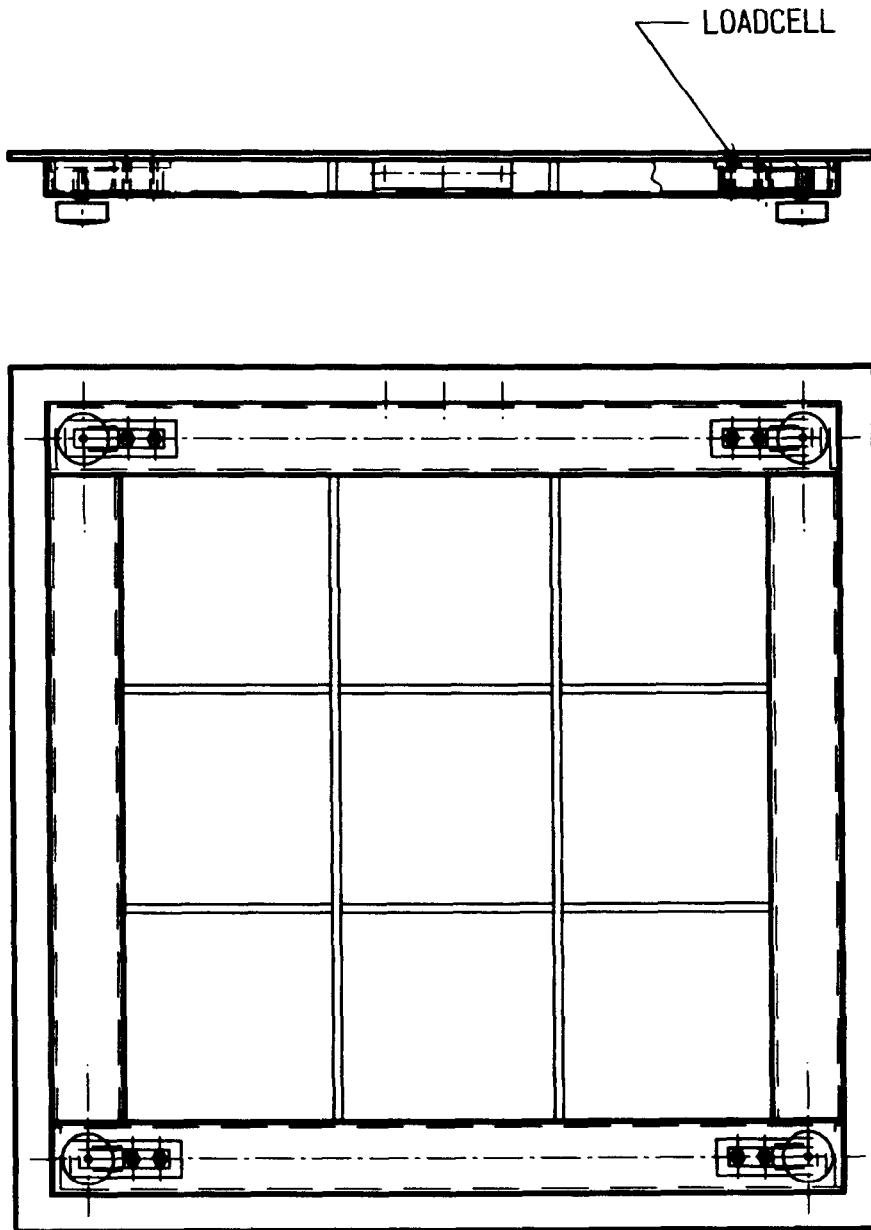
6/9C/247
6/10/93

FIGURE 6/9C/247 - 2



Model PB3000 - Showing Load Cell Mounting

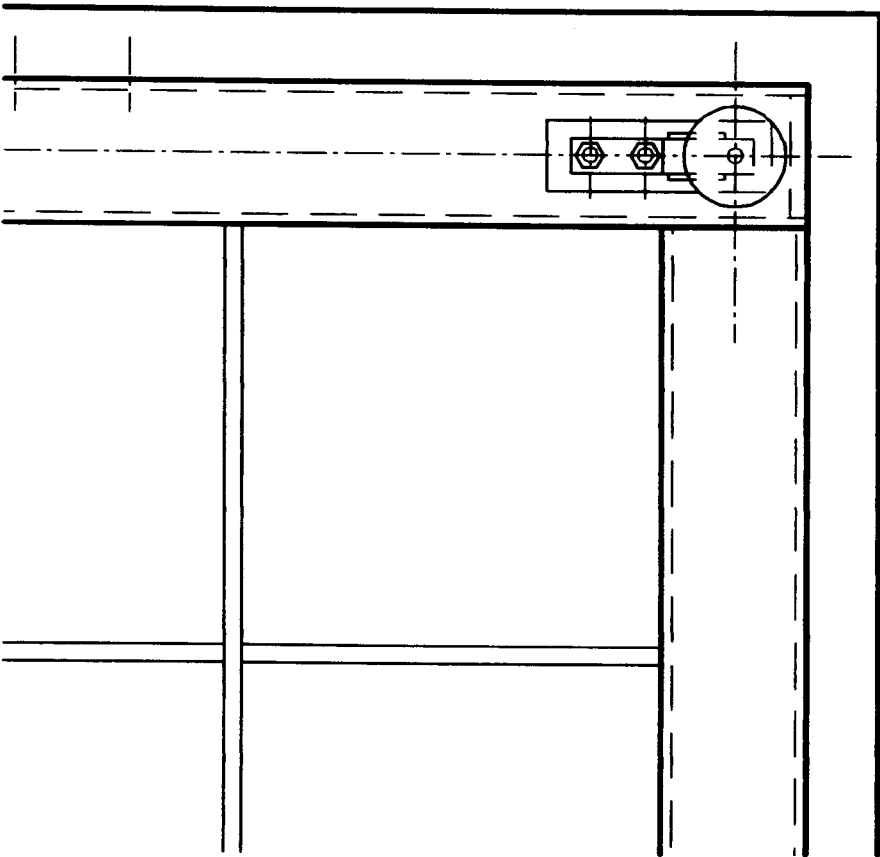
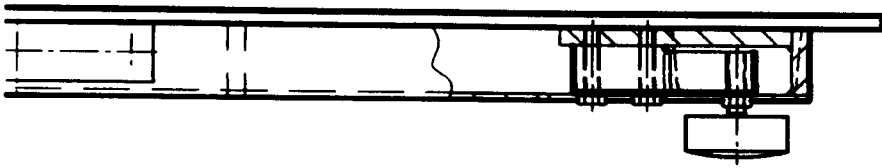
FIGURE 6/9C/247 - 3



Model PL3000 Basework

6/9C/247
6/10/93

FIGURE 6/9C/247 - 4



Model PL3000 - Showing Load Cell Mounting