



## **National Standards Commission**

### **Cancellation**

### **Certificate of Approval No 6/9C/244**

This is to certify that the approval for use for trade granted in respect of the

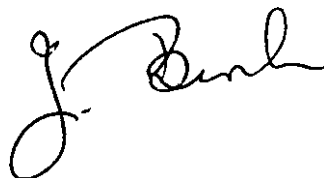
Atrax Model C24B Weighing Instrument

submitted by   Atrax Group NZ Limited  
                    110 Mays Road  
                    Penrose   Auckland  
                    New Zealand

has been cancelled in respect of new instruments as from 31 August 1999.

Instruments which were verified/certified before that date may, with the concurrence of the relevant verifying authority, be submitted for reverification.

Signed and sealed by a person authorised under Regulation 9 of the National Measurement (Patterns of Measuring Instruments) Regulations to exercise the powers and functions of the Commission under this Regulation.



# National Standards Commission



## Certificate of Approval

**No 6/9C/244**

Issued under Regulation 9  
of the  
National Measurement (Patterns of Measuring Instruments) Regulations

This is to certify that an approval for use for trade has been granted in respect of the

Atrax Model C24B Weighing Instrument

submitted by   Atrax Group NZ Limited  
                  110 Mays Road  
                  Penrose   Auckland   NEW ZEALAND.

**NOTE:** This Certificate relates to the suitability of the pattern of the instrument for use for trade only in respect of its metrological characteristics. This Certificate does not constitute or imply any guarantee of compliance by the manufacturer or any other person with any requirements regarding safety.

### CONDITIONS OF APPROVAL

This approval is subject to review on or after 1 January 1998.  
This approval expires in respect of new instruments on 1 January 1999.

Instruments purporting to comply with this approval shall be marked NSC No 6/9C/244 and only by persons authorised by the submittor.

The Commission reserves the right to examine any instrument or component of an instrument purporting to comply with this approval.

It is the submitter's responsibility to ensure that all instruments marked with this approval number are constructed as described in the documentation lodged with the Commission and with the relevant Certificate of Approval and Technical Schedule. Failure to comply with this Condition may attract penalties under Section 19B of the National Measurement Act and may result in cancellation or withdrawal of the approval, in accordance with the Commission's Document 106.

Auxiliary devices used with this instrument shall comply with the requirements of General Supplementary Certificate No S1/0/A.

The values of the performance criteria (maximum number of scale intervals etc.) applicable to the instrument shall be within the limits specified herein and in any approval documentation for the components where they are approved separately.

#### DESCRIPTIVE ADVICE

**Pattern:** approved 16 December 1992

- . An Atrax model C24B class 4 self-indicating weighing instrument of 100 kg maximum capacity.

**Variant:** approved 16 December 1992

1. Of 150 kg maximum capacity.

Technical Schedule No 6/9C/244 describes the pattern and variant 1.

**Variants:** approved 17 May 1995

2. With certain alternative Atrax baseworks.
3. With a model UMC444-23 digital indicator.

Technical Schedule No 6/9C/244 Variation No 1 describes variants 2 and 3.

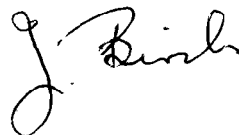
FILING ADVICE

Certificate of Approval No 6/9C/244 dated 25 March 1993 is superseded by this Certificate and may be destroyed.

The documentation for this approval now comprises:

Certificate of Approval No 6/9C/244 dated 14 July 1995  
Technical Schedule No 6/9C/244 dated 25 March 1993 (incl. Test  
Procedure)  
Technical Schedule No 6/9C/244 Variation No 1 dated 14 July 1995  
Figures 1 and 2 dated 25 March 1993  
Figures 3 and 4 dated 14 July 1995

Signed and sealed by a person authorised under Regulation 9 of the National Measurement (Patterns of Measuring Instruments) Regulations to exercise the powers and functions of the Commission under this Regulation.





## National Standards Commission

### TECHNICAL SCHEDULE No 6/9C/244

**Pattern:** Atrax Model C24B Weighing Instrument.

**Submitter:** Atrax Group NZ Limited  
110 Mays Road  
Penrose Auckland NEW ZEALAND.

#### 1. Description of Pattern

An Atrax model C24B class 4 self-indicating platform weighing instrument of 100 kg capacity with a verification scale interval of 0.1 kg. The instrument may incorporate a conveyor belt but is approved for static weighing only.

##### 1.1 Basework

The model C24B basework (Figure 1) has a minimum nominal size of 500 mm x 650 mm and a maximum nominal size of 780 mm x 2000 mm. The basework has 4 load cells directly supporting the load receptor. A conveyor belt assembly may be mounted on the load receptor.

The basework is fitted with 4 Precision Transducers model LS 250 load cells of 250 kg capacity (as described in the documentation of NSC approval No S224) mounted as shown in Figure 1. The load cells are fitted with levelling feet.

##### 1.2 Indicator

A Digitiser model UMC1000-23 (\*) digital indicator is used to digitise the output from the load cells and control the conveyor. The indicator consists of a computing unit ('digitiser') and two remote displays, one of which also carries the operating buttons. The operating display may be as shown in either of the versions in Figure 2 or in an alternative housing. (\* - Note that the suffix '23' may be omitted in some cases).

##### 1.2.1 Display Check and Zero Setting

When power is applied to the instrument, the display will blank, then show all 8's, and then display " - - - - ". Zero is then set by pressing the zero button.

##### 1.2.2 Totalising Facility

A totalising facility may be fitted whereby successive weighings may be summed by the use of the ADD TOTAL button, provided that the scale is returned to within its zero range between weighings. Pressing the DISPLAY TOTAL button will cause the total to be displayed on the mass indicator and a light marked TOTAL to illuminate. A CLEAR TOTAL button resets the totaliser.

### 1.3 Markings

Instruments are marked with the following data, together in one location:

Manufacturer's name or mark	
Serial number	
Accuracy class	Ⓜ
NSC approval number	NSC No 6/9C/244
Maximum capacity	Max..... kg *
Minimum capacity	Min ..... kg *
Verification scale interval	e= ..... kg *
Special temperature limits	0°C / 40°C

\* Repeated adjacent to each reading face.

### 1.4 Verification/Certification Provision

Provision is made for a verification/certification mark to be applied.

### 1.6 Sealing Provision

The computing unit ('digitiser') shall have diagonally-opposite corners sealed.

## 2. Description of Variant 1

With a maximum capacity of 150 kg with a verification scale interval of 0.2 kg.

### TEST PROCEDURE

Instruments should be tested in conjunction with any relevant tests specified in the Inspector's Handbook.

#### Maximum Permissible Errors at Verification/Certification

The maximum permissible errors for increasing and decreasing loads, expressed in terms of verification scale interval (e), with the instrument adjusted to zero within  $\pm 0.25e$  at no load, are:

- $\pm 0.5e$  for loads from 0 to  $50e$ ;
- $\pm 1.0e$  for loads over  $50e$  up to  $200e$ ; and
- $\pm 1.5e$  for loads over  $200e$ .



# National Standards Commission

TECHNICAL SCHEDULE No 6/9C/244

VARIATION No 1

**Pattern:** Atrax Model C24B Weighing Instrument.

**Submitter:** Atrax Group NZ Limited  
110 Mays Road  
Penrose Auckland NEW ZEALAND.

## 1. Description of Variants

### 1.1 Variant 2

With alternative Atrax model C24B baseworks as described below:

- Similar to the basework of the pattern but having a maximum nominal size of 1500 mm x 2000 mm.
- Similar to the basework of the pattern but inverted so that the swivel feet which are fitted to the load cells now support the conveyor and the load cell mounting is reversed (Figure 3). The basework may be fitted with wheels.

### 1.2 Variant 3

With a Digitiser model UMC444-23 (\*) digital indicator (Figure 4). (\* - Note that the suffix '23' may be omitted in some cases.)



# **National Standards Commission**

## **Notification of Change**

### **Certificate of Approval No 6/9C/244**

### **Change No 1**

The following change is made to the approval documentation for the

Atrax Model C24B Weighing Instrument

submitted by   Atrax Group NZ Limited  
                  110 Mays Road  
                  Penrose     Auckland     New Zealand.

In Certificate of Approval No 6/9C/244 dated 14 July 1995, the Condition of Approval referring to the expiry of the approval should be deleted.

Signed and sealed by a person authorised under Regulation 9 of the National Measurement (Patterns of Measuring Instruments) Regulations to exercise the powers and functions of the Commission under this Regulation.

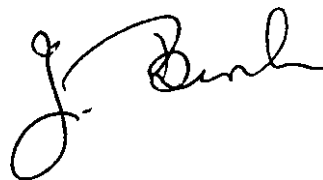
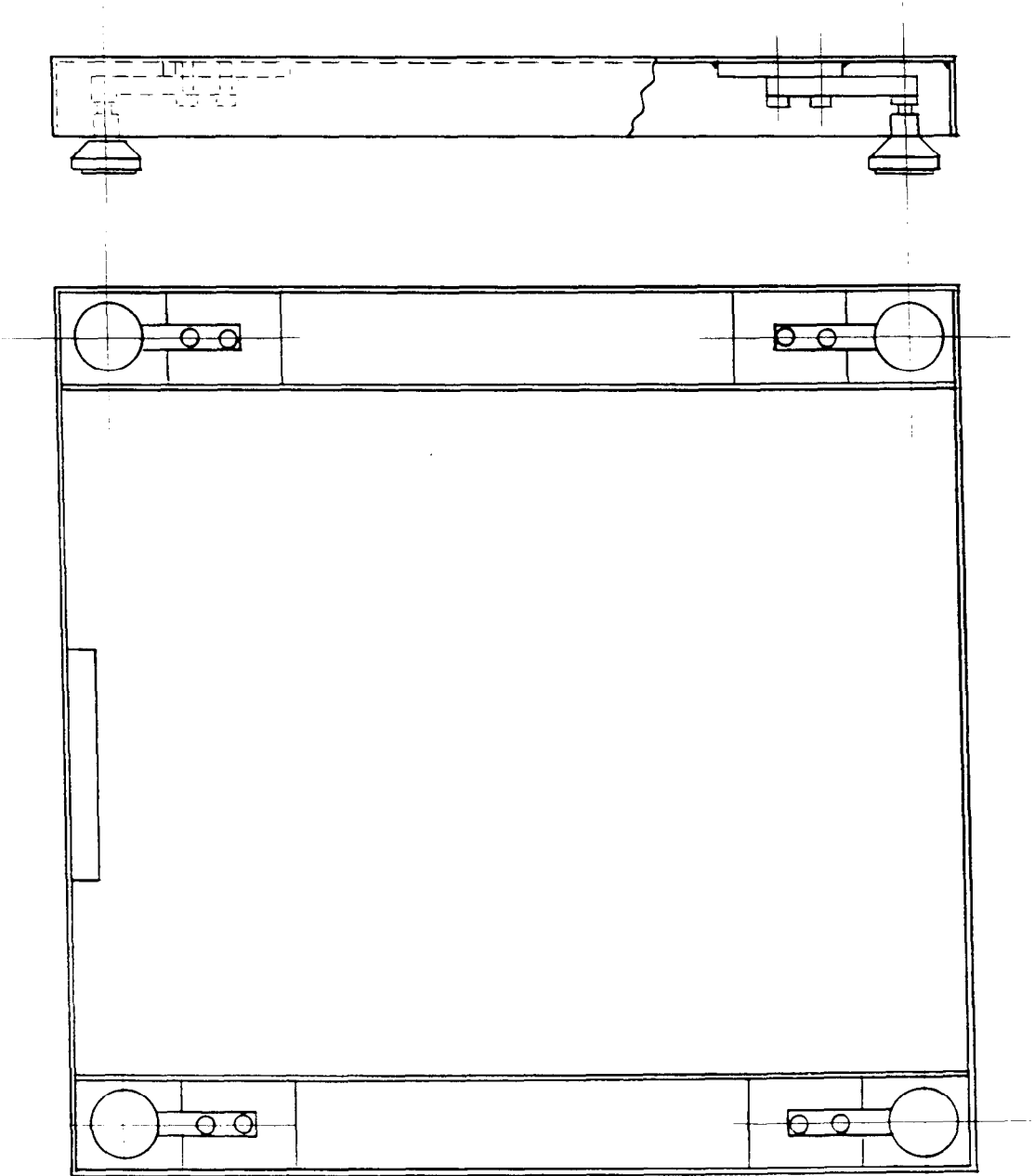


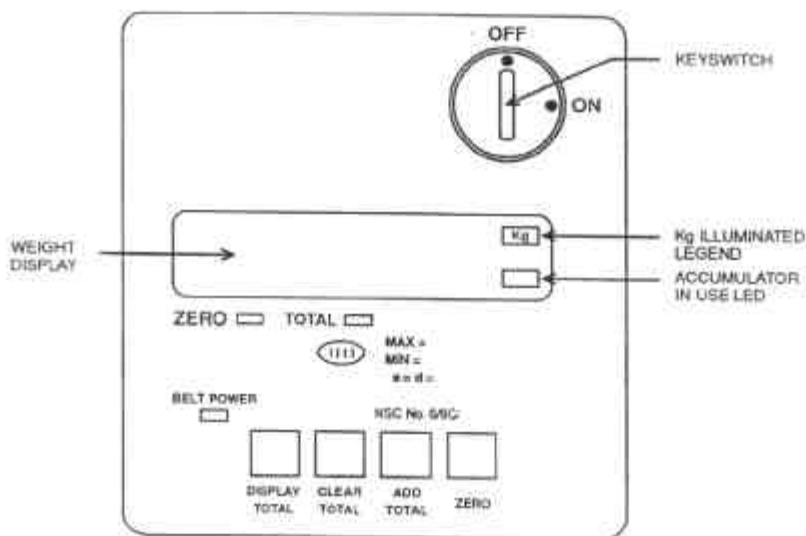
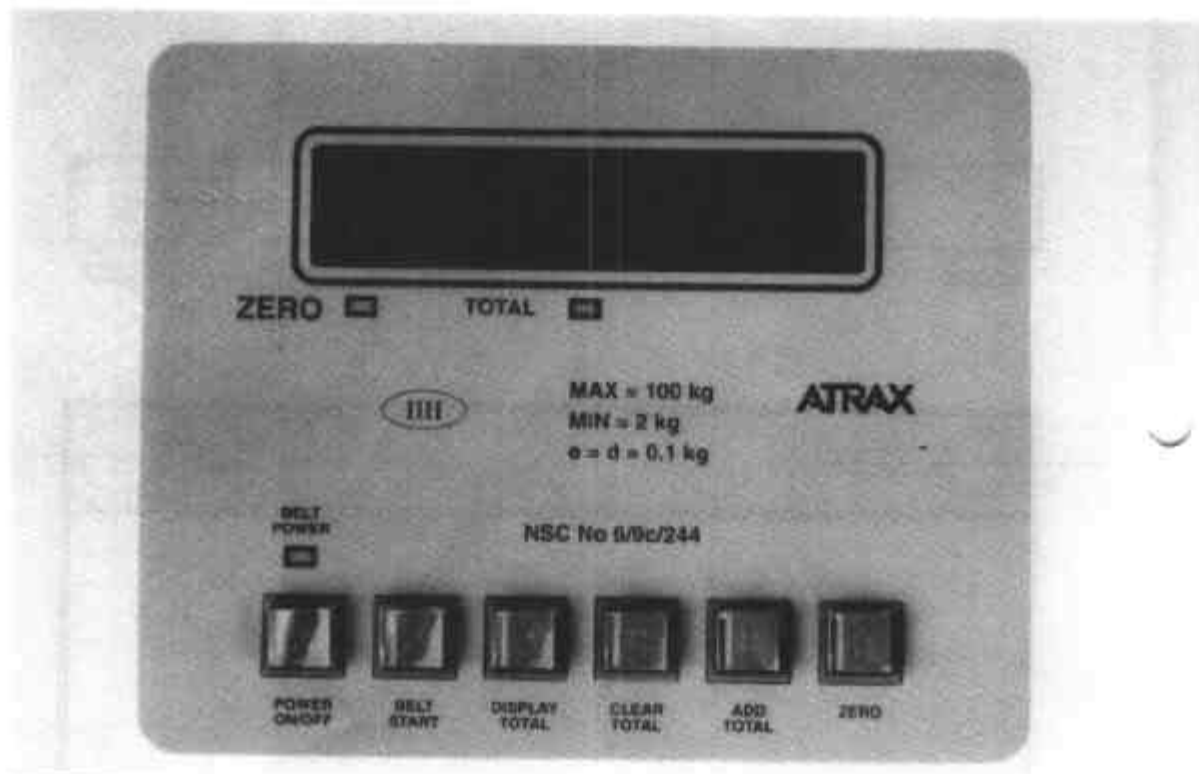


FIGURE 6/9C/244 - 1



Atrax Model C24B Basework

FIGURE 6/9C/244 - 2



Alternative Versions of The Indicator Displays

FIGURE 6/9C/244 - 3

