

National Standards Commission



Certificate of Approval No 6/9C/228

Issued under Regulation 9
of the
National Measurement (Patterns of Instruments) Regulations

This is to certify that an approval for use for trade has been granted in respect of the

A'Asia Scales Model P3000 Weighing Instrument

submitted by A'Asia Scale Service Pty Ltd
55 Railway Parade
Rocklea QLD 4106.

Signed and sealed by a person authorised under Regulation 9 of the National Measurement (Patterns of Instruments) Regulations to exercise the powers and functions of the Commission under this Regulation.

A handwritten signature in black ink, appearing to read 'J. Birch'.

CONDITIONS OF APPROVAL

This approval is subject to review on or after 1/7/94.
This approval expires in respect of new instruments on 1/7/95.

Instruments purporting to comply with this approval shall be marked NSC No 6/9C/228 and only by persons authorised by the submittor.

It is the submittor's responsibility to ensure that all instruments marked with this approval number are constructed as described in the drawings and specifications lodged with the Commission and with the relevant Certificate of Approval and Technical Schedule. Failure to comply with this Condition may attract penalties under Section 19B of the National Measurement Act and may result in cancellation or withdrawal of the approval, in accordance with the Commission's Document 106.

The Commission reserves the right to examine any instrument or component of an instrument purporting to comply with this approval.

Auxiliary devices used with this instrument shall comply with the requirements of General Supplementary Certificate No S1/0.

The values of the performance criteria (maximum number of scale intervals etc.) applicable to the instrument shall be within the limits specified herein and in any approval documentation for the components where they are approved separately.

The pattern as approved herein or with substitute load cells and/or Indicator shall comply with General Certificate No 6B/0.

DESCRIPTIVE ADVICE

Pattern: approved 23/6/89

- An A'Asia Scales model P3000 weighing Instrument of 3000 kg maximum capacity.

Variant: approved 23/6/89

1. Of 1500 kg maximum capacity.

Technical Schedule No 6/9C/228 describes the pattern and variant 1.

FILING ADVICE

The documentation for this approval comprises:

Certificate of Approval No 6/9C/228 dated 6/4/90
Technical Schedule No 6/9C/228 dated 6/4/90 (incl. Test Procedure)
Figures 1 and 2 dated 6/4/90



National Standards Commission

TECHNICAL SCHEDULE No 6/9C/228

Pattern: A'Asia Scales Model P3000 Weighing Instrument.
Submittor: A'Asia Scale Service Pty Ltd
55 Railway Parade
Rocklea QLD 4106.

1. Description of Pattern

An A'Asia Scales model P3000 self-indicating weighing instrument of 3000 kg maximum capacity and approved for use with up to 3000 verification scale intervals.

1.1 Basework

The model P basework has load cells which fully support the load receptor (Figures 1 and 2). The basework is positioned above ground, with or without loading ramps, or let into a pit in which case the platform is level with the ground. If the instrument is not in a pit or permanently fixed in place, it shall be fitted with a level indicator, adjacent to which is the notice INSTRUMENT MUST BE LEVEL WHEN IN USE.

1.2 Load Cell

Four Precision Transducers model LS1000 load cells of 1000 kg capacity are used as described in the documentation of NSC approval No S224.

1.3 Indicator

A Gedge Systems model GS1650 digital indicator is used as described in the documentation of NSC approval No S193.

1.4 Markings

Instruments are marked with the following data, together in one location:

Manufacturer's name or mark	
Serial number	
NSC approval numbers – instrument	NSC No 6/9C/228
– load cells	NSC No S.....
– indicator	NSC No S.....
Accuracy class	Ⓜ
Maximum capacity	Max..... kg *
Minimum capacity	Min..... kg *
Verification scale interval	e = d =..... kg *
Maximum subtractive tare	T = -..... kg

* These are repeated adjacent to each reading face.

1.5 Verification Provision

Provision is made for a verification mark to be applied.

2. Description of Variant 1

Model P1500 of 1500 kg maximum capacity and approved for use with up to 3000 verification scale intervals.

TEST PROCEDURE

Instruments should be tested in conjunction with any tests specified in the approval documentation for the indicator used, and in accordance with any relevant tests specified in the Inspector's Handbook.

Maximum Permissible Errors at Verification/Certification

The maximum permissible errors for increasing and decreasing loads, expressed in terms of verification scale interval (e), with the instrument adjusted to zero within $\pm 0.25e$ at no load, are:

- $\pm 0.5e$ for loads from 0 to 500e;
- $\pm 1.0e$ for loads over 500e up to 2 000e; and
- $\pm 1.5e$ for loads over 2 000e.

National Standards Commission



NOTIFICATION OF CHANGE

CERTIFICATE OF APPROVAL No 6/9C/228

CHANGE No 1

The following change is made to the approval documentation for the

A'Asia Scales Model P3000 Weighing Instrument

submitted by A'Asia Scale Service Pty Ltd
55 Railway Parade
Rocklea QLD 4106.

Signed and sealed by a person authorised under Regulation 9 of the National Measurement (Patterns of Measuring Instruments) Regulations to exercise the powers and functions of the Commission under this Regulation.



In Certificate No 6/9C/228 and its Technical Schedule, both dated 6/4/90;

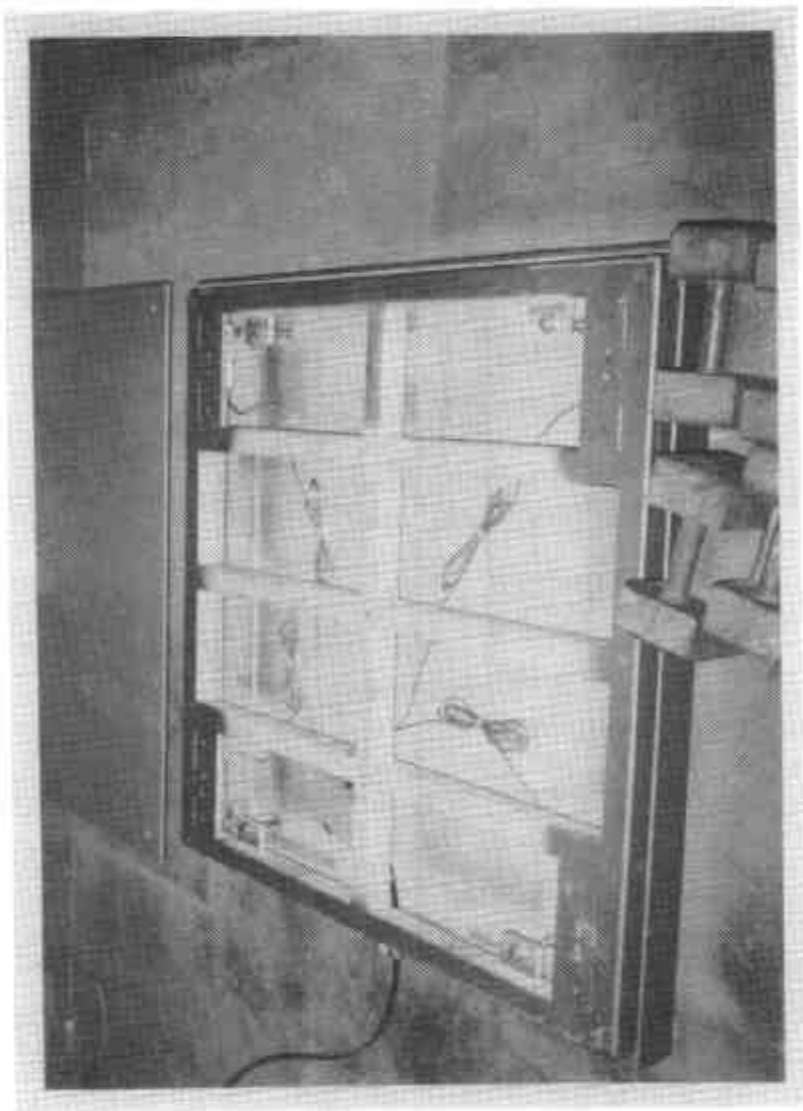
(a) The last Condition of Approval listed in the Certificate, is replaced by:

"The pattern as approved herein or with substitute load cells and/or indicator, **and in other capacities**, shall comply with General Certificate No 6B/0."

(b) In the Certificate and its Technical Schedule, the descriptions of Variant 1 should be amended to read:

"Of up to 1500 kg maximum capacity and approved for use with up to 3000 verification scale intervals."

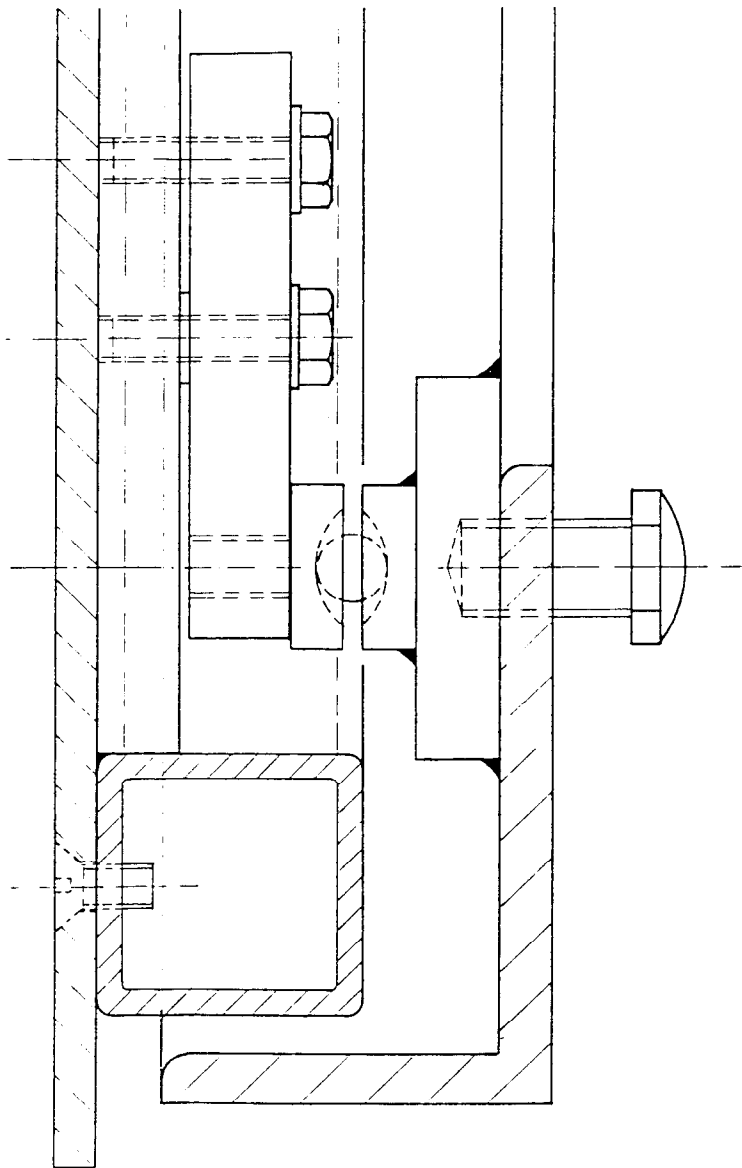
Figure 6/9C/228 -- 1



A'Asia Scales P3000 Platform

6/9C/228
6/4/90

Figure 6/9C/228 - 2



Showing P3000 Load Cell Mounting