

National Standards Commission



Certificate of Approval

No 6/9C/224

Issued under Regulation 9
of the
National Measurement (Patterns of Measuring Instruments) Regulations

This is to certify that an approval for use for trade has been granted in respect of the

Wedderburn Model WS004SBH Weighing Instrument

submitted by W W Wedderburn Pty Ltd
90 Parramatta Road
Summer Hill NSW 2130.

CONDITIONS OF APPROVAL

This approval is subject to review on or after 1/2/94.
This approval expires in respect of new instruments on 1/2/95.

Instruments purporting to comply with this approval shall be marked NSC No 6/9C/224 and only by persons authorised by the submittor.

It is the submittor's responsibility to ensure that all instruments marked with this approval number are constructed as described in the documentation lodged with the Commission and with the relevant Certificate of Approval and Technical Schedule. Failure to comply with this Condition may attract penalties under Section 19B of the National Measurement Act and may result in cancellation or withdrawal of the approval, in accordance with the Commission's Document 106.

The values of the performance criteria (maximum number of scale intervals etc.) applicable to the instrument shall be within the limits specified herein and in any approval documentation for the components where they are approved separately.

Auxiliary devices used with this instrument shall comply with the requirements of General Supplementary Certificate No S1/0/A.

The Commission reserves the right to examine any instrument or component of an instrument purporting to comply with this approval.

The pattern as approved herein or with substitute load cells and/or indicator, and in other capacities, shall comply with General Certificate No 6B/0.

DESCRIPTIVE ADVICE

Pattern: approved 12/1/89

- A Wedderburn model WS004SBH weighing instrument of 3000 kg maximum capacity.

Variant: approved 15/3/89

1. With an alternative load cell mounting.

Technical Schedule No 6/9C/224 describes the pattern and variant 1.

Variant: approved 17/12/92

2. Of up to 1500 kg maximum capacity.

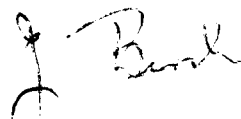
Technical Schedule No 6/9C/224 Variation No 1 describes variant 2.

FILING ADVICE

Certificate of Approval No 6/9C/224 dated 24/5/89 is superseded by this Certificate and may be destroyed. The documentation for this approval now comprises:

Certificate of Approval No 6/9C/224 dated 24/12/92
Technical Schedule No 6/9C/224 dated 24/5/89 (incl. Test Procedure)
Technical Schedule No 6/9C/224 Variation No 1 dated 24/12/92
Figures 1 to 4 dated 24/5/89

Signed and sealed by a person authorised under Regulation 9 of the National Measurement (Patterns of Measuring Instruments) Regulations to exercise the powers and functions of the Commission under this Regulation.

A handwritten signature in black ink, appearing to read 'J. Beak', is written over a faint circular stamp or seal.



NATIONAL STANDARDS COMMISSION

TECHNICAL SCHEDULE No 6/9C/224

Pattern: Wedderburn Model WS004SBH Platform Weighing Instrument.

Submittor: J W Wedderburn & Sons Pty Ltd
90 Parramatta Road
Summer Hill NSW 2130.

1. Description of Pattern

A Wedderburn model WS004SBH platform weighing instrument of 3000 kg capacity (Figure 1), and approved for use with up to 3000 verification scale intervals.

1.1 Basework

The basework has load cells which fully support the load receptor, and may be of flat or drop-centre style. The basework is positioned above ground, with or without loading ramps, or let into a pit in which case the platform is level with the ground. If the instrument is not in a pit or permanently fixed in place, it shall be fitted with a level indicator, adjacent to which is the notice BASEWORK MUST BE LEVEL WHEN IN USE.

1.2 Load Cells

Four Precision Transducers model LS1000 load cells of 1000 kg capacity are used (Figure 2) as described in the documentation of NSC approval No S224.

1.3 Indicator

A Salter model CWM digital indicator is used as described in the documentation of NSC approval No S200.

1.4 Markings

Instruments are marked with the following data, together in one location:

Manufacturer's name or mark	
Serial number	
NSC approval numbers - Instrument	NSC No 6/9C/224
- load cell	NSC No S...
- Indicator	NSC No S...
Accuracy class	(III)
Maximum capacity	Max ... kg *
Minimum capacity	Min ... kg *
Verification scale interval	e = d = ... kg *
Maximum subtractive tare	T = - ... kg

* These are repeated adjacent to each reading face.

In addition, the instrument shall be marked BASEWORK MUST BE LEVEL WHEN IN USE.

1.5 Verification Provision

Provision is made for a verification mark to be applied.

2. Description of Variant 1

With a modified WS004SBH basework, in which the load cells are mounted between a baseframe and a load receptor support frame (Figures 3 and 4).

TEST PROCEDURE

Instruments should be tested in conjunction with any tests specified in the approval documentation for the indicator used, and in accordance with any relevant tests specified in the Inspector's Handbook.

The results shall not exceed the maximum permissible errors specified in Document 118, 2nd Edition, October 1986.



National Standards Commission

TECHNICAL SCHEDULE No 6/9C/224

VARIATION No 1

Pattern: Wedderburn Model WS004SBH Weighing Instrument.

Submittor: W W Wedderburn Pty Ltd
90 Parramatta Road
Summer Hill NSW 2130.

1. Description of Variant 2

A model WS004SBH weighing instrument having the features of the pattern (Figures 1 and 2) but of up to 1500 kg maximum capacity with up to 3000 verification scale intervals.

National Standards Commission



NOTIFICATION OF CHANGE
CERTIFICATE OF APPROVAL No 6/9C/224
CHANGE No 1

The following change is made to the approval documentation for the

Wedderburn Model WS004SBH Weighing Instrument

submitted by W W Wedderburn Pty Ltd
90 Parramatta Road
Summer Hill NSW 2130.

In Certificate of Approval No 6/9C/224 dated 24 December 1992, the Condition of Approval referring to the expiry of the approval should be amended to now read:

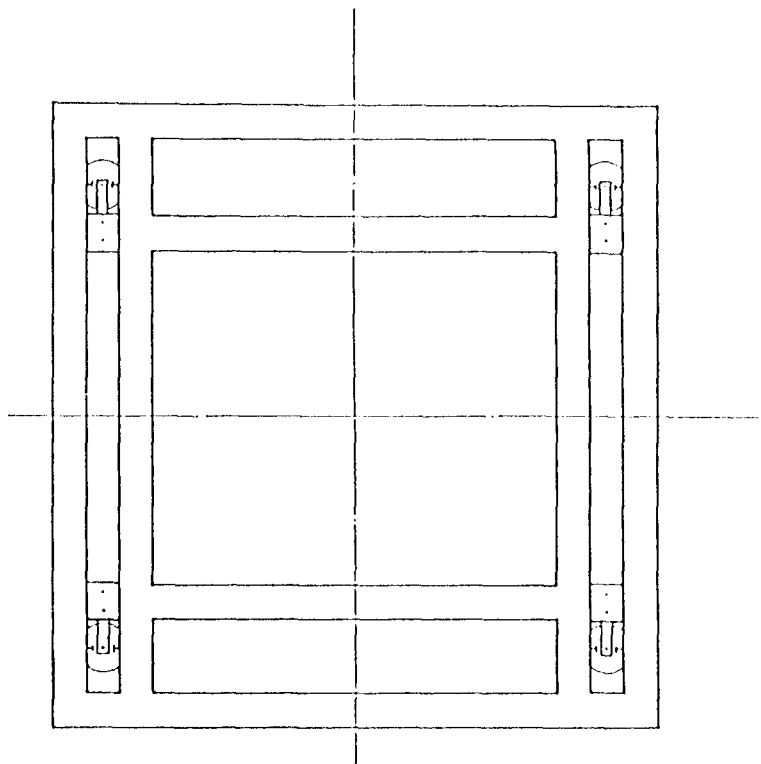
"This approval expires in respect of new instruments on 1 May 1995."

Signed and sealed by a person authorised under Regulation 9 of the National Measurement (Patterns of Measuring Instruments) Regulations to exercise the powers and functions of the Commission under this Regulation.



6/9C/224
24/5/89

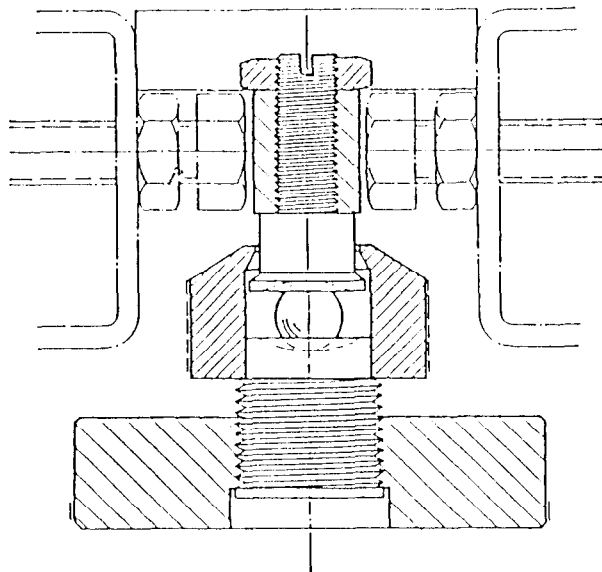
FIGURE 6/9C/224 - 1



Wedderburn Model WS004SBH Platform

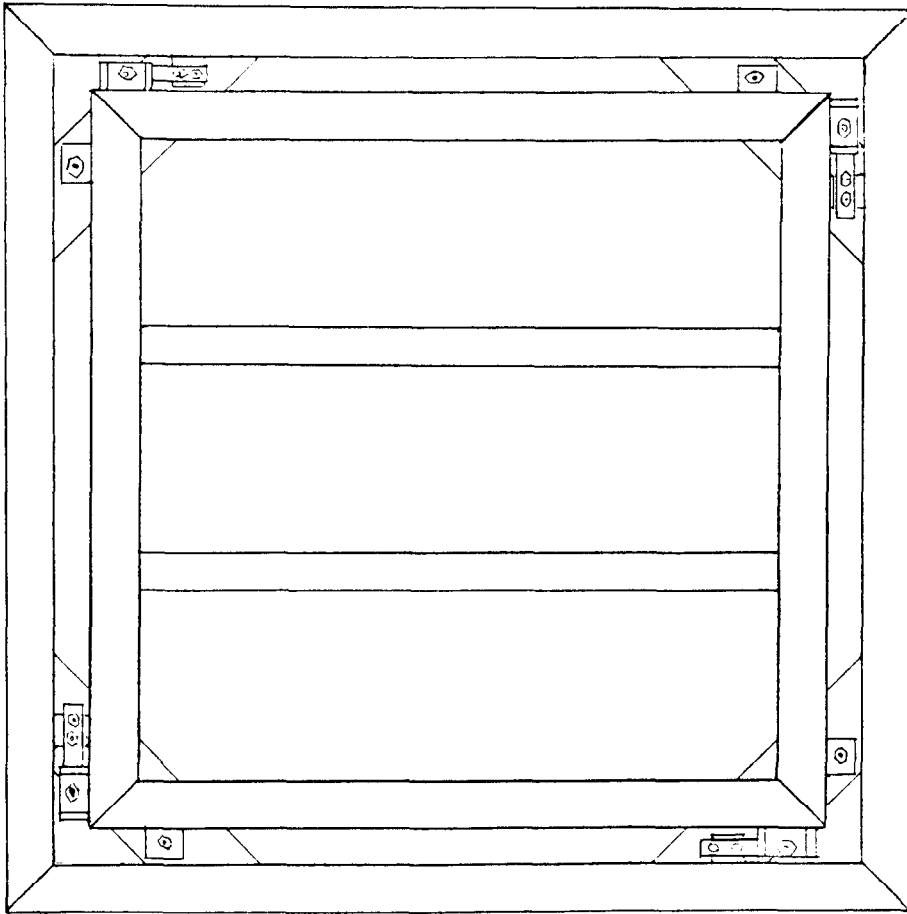
6/9C/224
24/5/89

FIGURE 6/9C/224 - 2



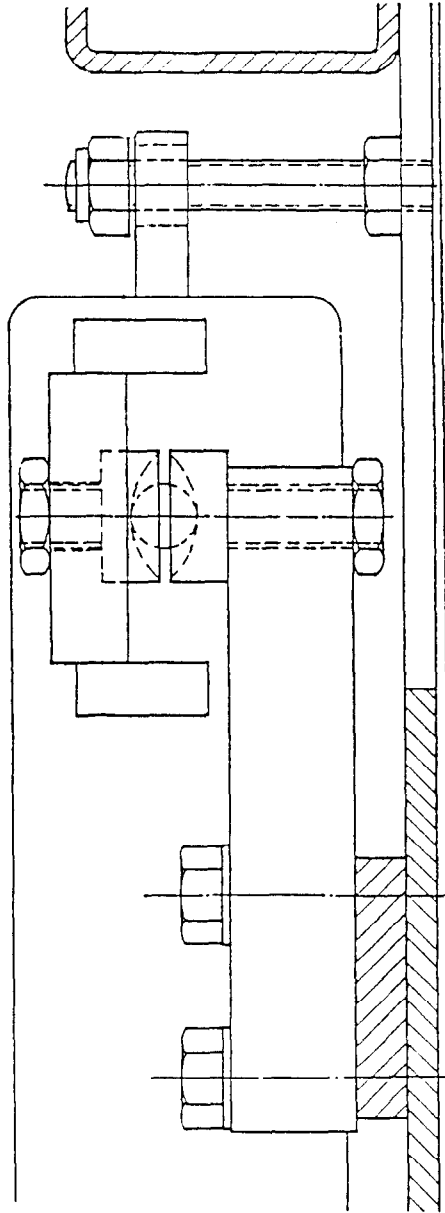
Showing Load Cell Mounting (Pattern)

FIGURE 6/9C/224 - 3



Modified Basework (Variant 1)

FIGURE 6/9C/224 - 4



Showing Load Cell Mounting (Variant 1)