



# NATIONAL STANDARDS COMMISSION

6/9C/217  
7/9/89

## NATIONAL MEASUREMENT (PATTERNS OF INSTRUMENTS) REGULATIONS

### REGULATION 9

#### CERTIFICATE OF APPROVAL No 6/9C/217

This is to certify that an approval for use for trade has been granted in respect of the pattern and variants of the

Ultra 7600/15 Series Platform Weighing Instrument

submitted by Ultra Scales Pty Ltd  
33 Judge Street  
Sunshine VIC 3020.

#### CONDITIONS OF APPROVAL

This approval is subject to review on or after 1/8/93.  
This approval expires in respect of new instruments on 1/8/94.

Instruments purporting to comply with this approval shall be marked NSC No 6/9C/217.

This approval may be withdrawn if instruments are constructed other than as described in the drawings and specifications lodged with the Commission.

The values of the performance criteria (maximum number of scale intervals etc.) applicable to the instrument shall be within the limits specified in this approval and in any approval documentation for the components, where they are approved separately.

Auxiliary devices used with this instrument shall comply with the requirements of General Supplementary Certificate No S1/0.

The load cells used shall be subject to regular certification by the Commission.

The pattern as approved herein or with substitute load cells and/or indicator shall comply with General Certificate No 6B/0 for Weighing Instruments for Static Loads of Not Less Than 1500 kg.

Signed

Executive Director

#### Descriptive Advice

Pattern: approved 27/7/88

- Ultra 7600/15 series platform weighing instrument of 15 000 kg maximum capacity.

...../2

Variants: approved 21/7/89

1. Model 7600 of 1500 kg maximum capacity.
2. With an alternative load cell mounting.

Technical Schedule No 6/9C/217 describes the pattern and variants 1 and 2.

Filing Advice

The documentation for this approval comprises:

Certificate of Approval No 6/9C/217 dated 7/9/89  
Technical Schedule No 6/9C/217 dated 7/9/89  
Test Procedure No 6/9C/217 dated 7/9/89  
Figures 1 to 6 dated 7/9/89



# NATIONAL STANDARDS COMMISSION

6/9C/217  
7/9/89

## TECHNICAL SCHEDULE No 6/9C/217

Pattern: Ultra 7600/15 Series Platform Weighing Instrument.

Submittor: Ultra Scales Pty Ltd  
33 Judge Street  
Sunshine VIC 3020.

### 1. Description of Pattern

An Ultra 7600/15 series platform weighing instrument of 15 000 kg maximum capacity and approved for use with up to 3000 verification scale intervals.

#### 1.1 Basework

The model 7600 basework has load cells which fully support the load receptor and mounted on a subframe (Figure 1). The basework is positioned above ground, with or without loading ramps, or let into a pit in which case the platform is level with the ground. Alternatively, the instrument may be fitted with a level indicator, adjacent to which is the notice INSTRUMENT MUST BE LEVEL WHEN IN USE.

#### 1.2 Load Cells

Four Molenschot model CSP-M-25-A load cells of 25 t capacity are used (Figure 2) as described in the documentation of NSC approval No S133. Alternatively, other Commission-approved load cells may be used and mounted as shown in Figure 3.

#### 1.3 Indicator

An Ultra series 85 indicator is used as described in the documentation of NSC approval No S151.

#### 1.4 Markings

Instruments are marked with the following data, together in one location:

Manufacturer's name or mark	
Serial number	
NSC approval numbers – instrument	NSC No 6/9C/217
– load cells	NSC No S.....
– indicator	NSC No S.....
Accuracy class	(III)
Maximum capacity	Max ..... kg *
Minimum capacity	Min ..... kg *
Verification scale interval	e = d = ..... kg *
Maximum subtractive tare	T = - ..... kg

\* These are repeated adjacent to each reading face.

#### 1.5 Verification Provision

Provision is made for a verification mark to be applied.

## 2. Description of Variants

### 2.1 Variant 1

Model 7600 of 1500 kg maximum capacity (Figures 4 and 5) approved for use with up to 6000 verification scale Intervals.

### 2.2 Variant 2

With a modified basework, without the subframe and with an alternative self-aligning load cell mounting, typically as shown in Figure 6.

This basework is approved for use with up to 3000 verification scale Intervals.

## TEST PROCEDURE

Instruments should be tested in conjunction with any tests specified in the approval documentation for the indicator used, and in accordance with any relevant tests specified in the Inspector's Handbook.

The results should not exceed the maximum permissible errors specified in Document 118, 2nd Edition, October 1986.

# National Standards Commission



## NOTIFICATION OF CHANGE

### CERTIFICATE OF APPROVAL No 6/9C/217

#### CHANGE No 1

The following change is made to the approval documentation for the

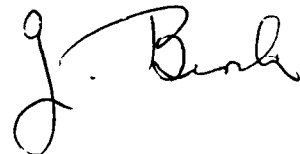
Ultra 7600/15 Series Platform Weighing Instrument

submitted by Ultra Scales Pty Ltd  
33-35 Judge Street  
Sunshine VIC 3020.

In Certificate of Approval No 6/9C/217 dated 7 September 1989, the Condition of Approval referring to the expiry of the approval should be amended to now read:

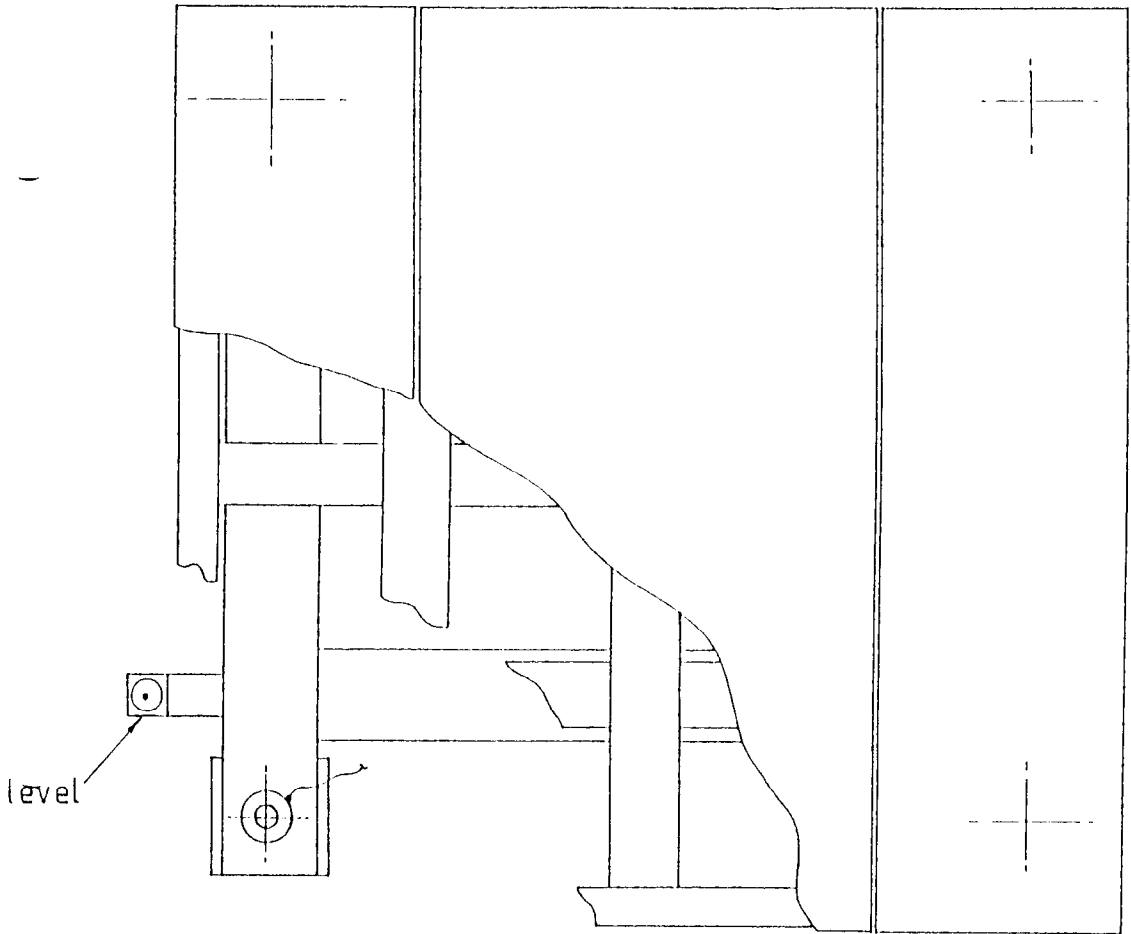
"This approval expires in respect of new instruments on 1 February 1995."

Signed and sealed by a person authorised under Regulation 9 of the National Measurement (Patterns of Measuring Instruments) Regulations to exercise the powers and functions of the Commission under this Regulation.



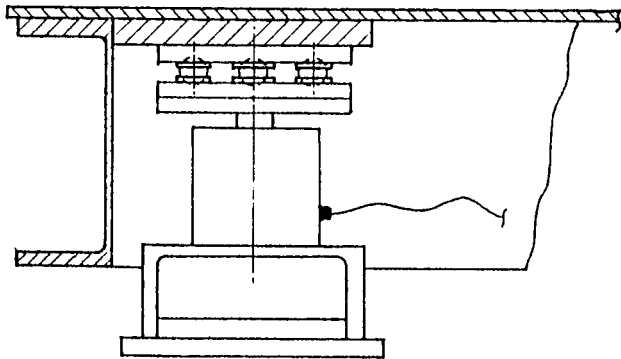
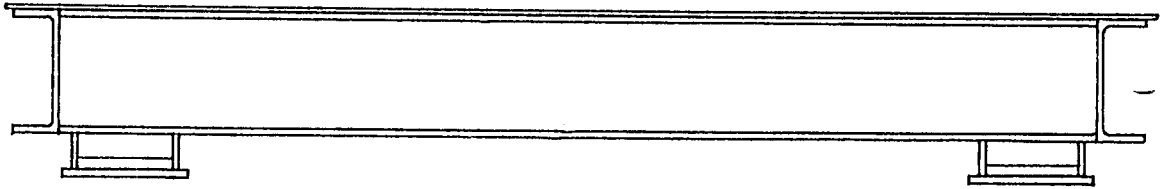
6/9C/217  
7/9/89

Figure 6/9C/217 - 1



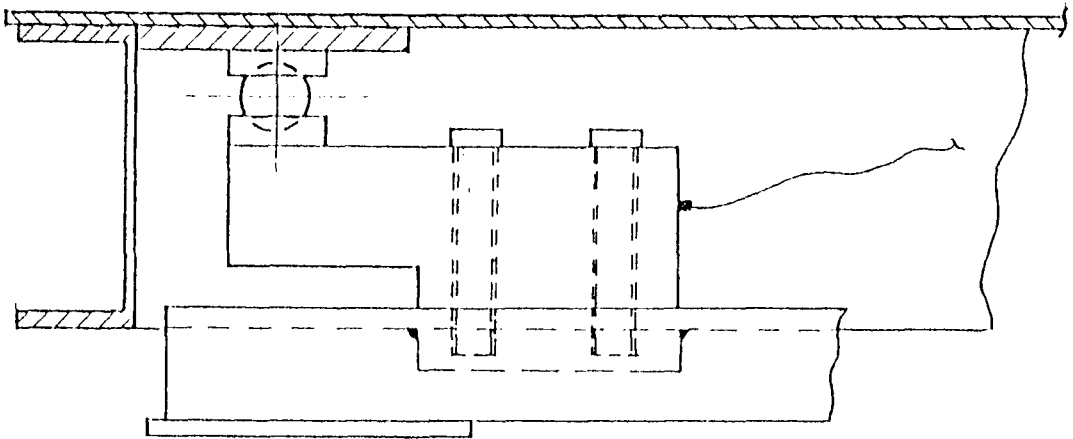
Ultra 7600/15 Basework Showing Subframe

Figure 6/9C/217 - 2



6/9C/217  
7/9/89

Figure 6/9C/217 - 3

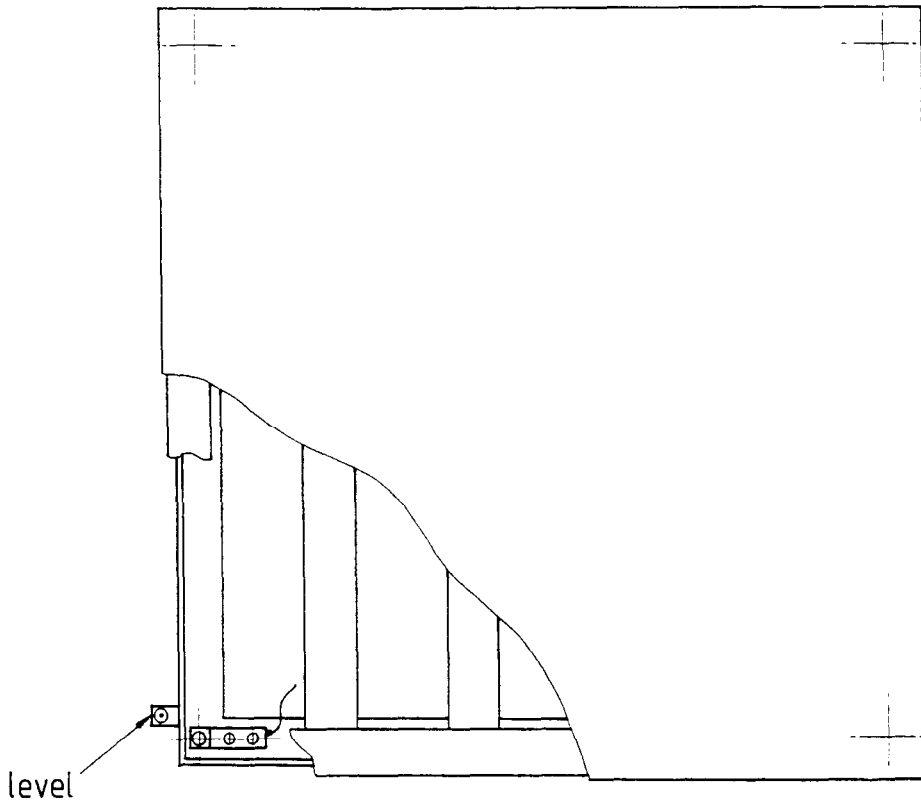


Alternative Load Cell Mounting Method (7600/15)



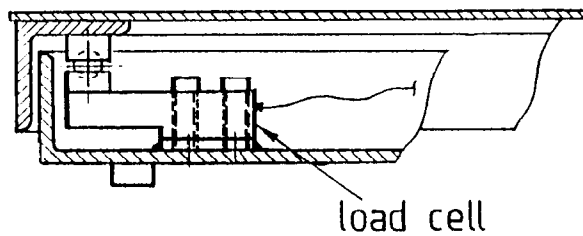
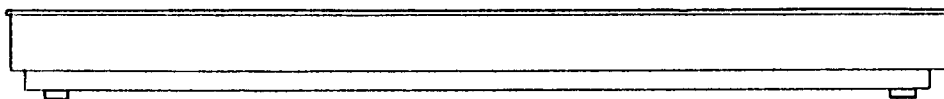
6/9C/217  
7/9/89

Figure 6/9C/217 - 4



Model 7600 Basework Showing Subframe

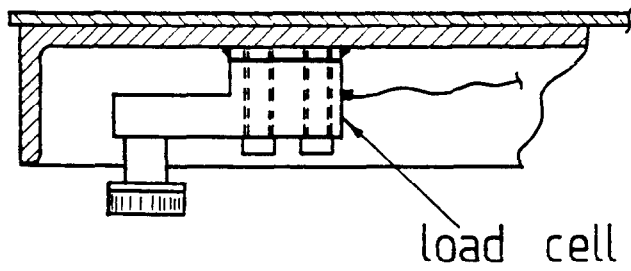
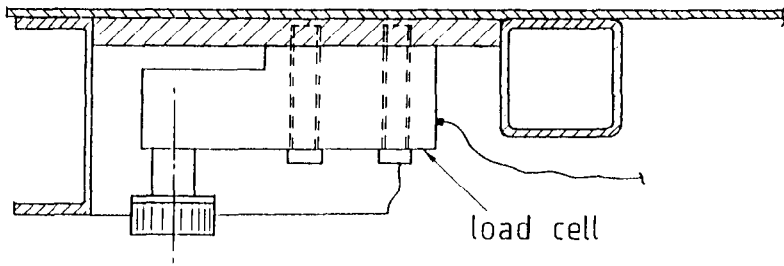
Figure 6/9C/217 - 5



Load Cell Mounting Method (7600)

6/9C/217  
7/9/89

Figure 6/9C/217 - 6



Modified Basework - 7600/15 (Upper) and 7600 (Lower)