



Weights and Measures  
(National Standards)  
Act 1960-1964

Weights and Measures  
(Patterns of Instruments)  
Regulations

# CANCELLED

COMMONWEALTH OF AUSTRALIA

NATIONAL STANDARDS COMMISSION

## *Certificate of Approval*

CERTIFICATE NUMBER 6/4D/10

*In respect of the pattern of*

Pioneer Model HC 10-H Self-indicating Price-computing Counter  
Machine and Variants 1 to 9.

Submitted and  
manufactured by: South Australian Scale Co. Pty. Ltd.,  
Bray Avenue,  
Torrensville,  
South Australia. 5031.

This is to certify that the pattern and variants of the instrument  
illustrated and described in this Certificate have been examined by  
the National Standards Commission under the provisions of the  
abovementioned Regulations and have been approved as being  
suitable for use for trade.

Approval was granted for:

1. The pattern and variants 1 to 4 on 17th February, 1967.
2. Variant 5 on 12th December, 1967.
3. Variants 6 and 7 on 11th March, 1969.
4. Variants 8 and 9 on 9th March, 1970.

17/3/70

Cont'd over

Approval was granted on condition that all instruments made in conformity with the pattern:

1. are appropriately marked NSC No 6/4D/10; and
2. comply with the General Specifications for Weighing and Measuring Instruments to be Used for Trade.

This Certificate comprises:

Pages 1 to 5 dated 17th March, 1970.

Figures 6/4D/10 - 1 to 11 dated 17th March, 1970.

Date of issue 17th March, 1970.

Signed



A person authorised by the Commission  
to sign Certificates under the  
abovementioned Regulations.

17/3/70

---

DESCRIPTION OF PATTERN

The pattern (see Figures 1, 2 and 3) is of the Model HC 10-H self-indicating, price-computing counter machine of 10 lb capacity, the dial having 320 graduations. It is intended for use on counters approximately 4 feet high. It comprises load receptor, baseworks, spring-resistant mechanism and indicating chart.

The load receptor is attached to a column held in place by a stay and supported through knife-edges and bearings by the second-order main lever (see Figure 4). The load knife-edge is held in its bearings by an adjustable metal bracket. The main lever, which is supported by ball bearings mounted on the base, moves the 6-inch diameter cylinder chart through a rack and pinion.

An adjustable arm on the main lever transfers the force through a conical pivot to the temperature-stable spring resistant. The mechanism comprises a pair of springs in tandem connected at the top end to a zero-adjustment lever. Access to the zero adjustment is gained through an opening in the housing beneath the load receptor. An adjustable oil-filled dashpot is mounted on the base with its piston connected to the load column; it is accessible through a covered hole in the housing.

On the top of the housing adjacent to an aperture through which the level indicator can be viewed is a notice "instrument incorrect if not truly level". The instrument is provided with four adjustable levelling feet.

The chart and aperture plates are viewed by the vendor and purchaser through lenses. The chart marked "HC 10, 100 cent" is graduated to 10 lb by  $\frac{1}{2}$  oz graduations, each lb being denominated and each 2 oz being numbered.

The aperture plate on the vendor's side is identified the same as the chart (see Figure 5). Provision is made in red figures for prices per pound from 54 to 200 cents per pound by doubling the appropriate chart readings.

On the purchaser's side the aperture plate allows only the weight to be seen, and is marked "lb" and "oz".

#### DESCRIPTION OF VARIANTS

1. The pattern fitted with a price-computing chart and aperture plate marked "HC 10 - 50 cent" with a maximum unit price of 50 cents per pound. The aperture plate is illustrated in Figure 6.
2. The pattern fitted with a price-computing chart and aperture plate marked "HC 10 - 75 cent" with a maximum unit price of 75 cents per pound. The aperture plate is illustrated in Figure 7.
3. The pattern fitted with a price-computing chart and aperture plate marked "HC 10 15 - 100 cent" with a maximum unit price of 100 cents per pound. The aperture plate is illustrated in Figure 8.
4. The pattern fitted with a taring device which replaces the zero adjustment, in which case the weight indication on the purchaser's side is removed, the variant is marked "not for retail counter use", and it is known as the Model HC 10-P (see Figure 9).
5. For use on counters 3 feet high, in which case the lens, aperture plate and reading line on the vendor's side are repositioned and the variant is known as the Model HC 10-S.
6. The pattern or variants 1 to 5 fitted with a movable frame to isolate any required price per pound (see Figure 10). The wording on the vendor's aperture plate "cents per pound" is relocated to a position above the price-computing chart.
7. The pattern or variants 1 to 5 having the wording on the vendor's aperture plate "cents per pound" relocated to a position above the price-computing chart.

8. The pattern fitted with a price-computing chart and aperture plate marked "HC 10 - PS 45 cent" with a maximum unit price of 45 cents per pound. The aperture plate is illustrated in Figure 11.
9. Variant 8 fitted with a movable frame as described in variant 6.

#### GENERAL NOTES

Notice of approval of the pattern and variants 1 to 7 described in this Certificate was given in the following Memoranda of Approval:

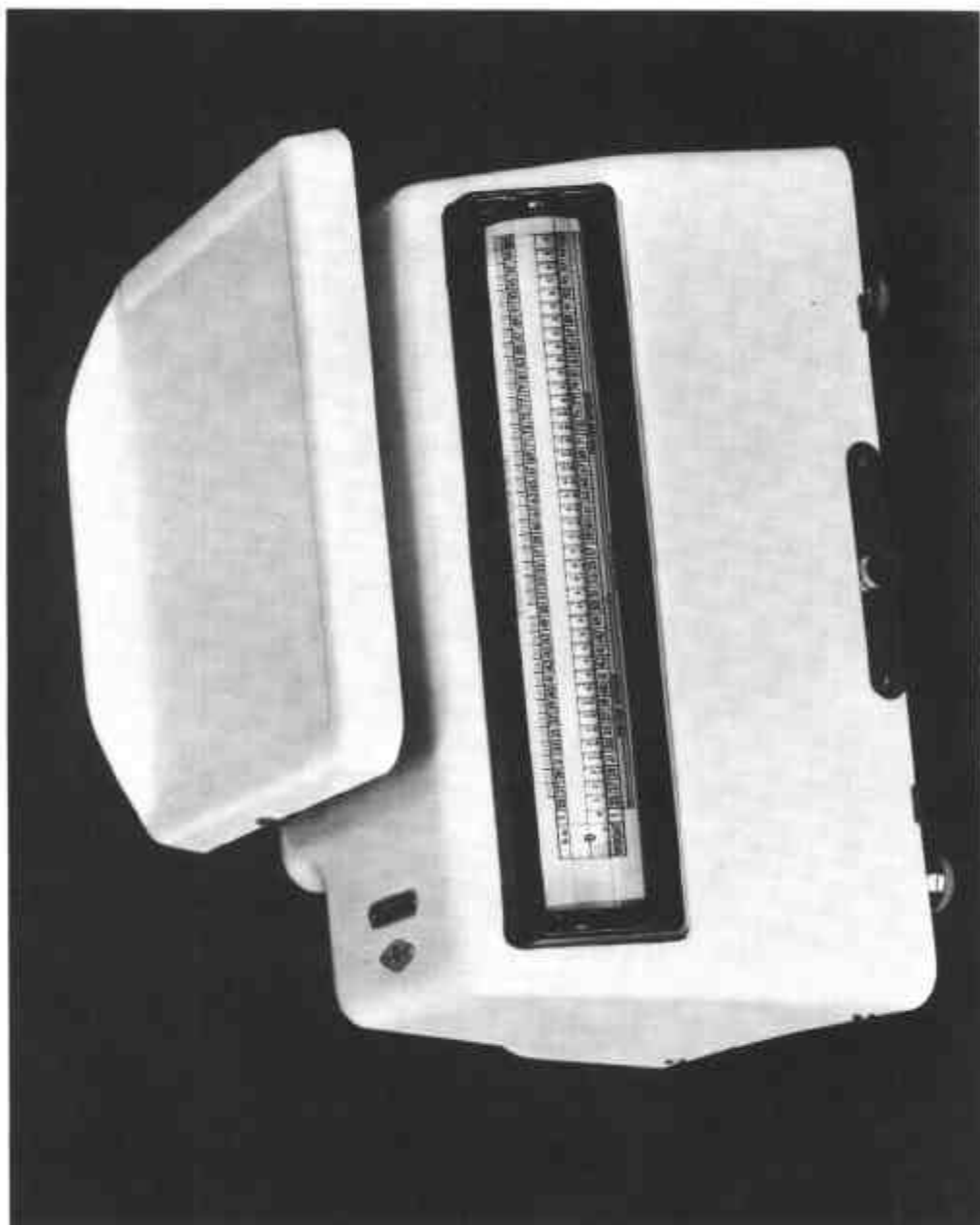
No 54A dated 15th December, 1967.

No 151 dated 17th March, 1969.

No previous notice of approval has been given in regard to variants 8 and 9.

17/3/70

FIGURE 6/4D/10 - 1



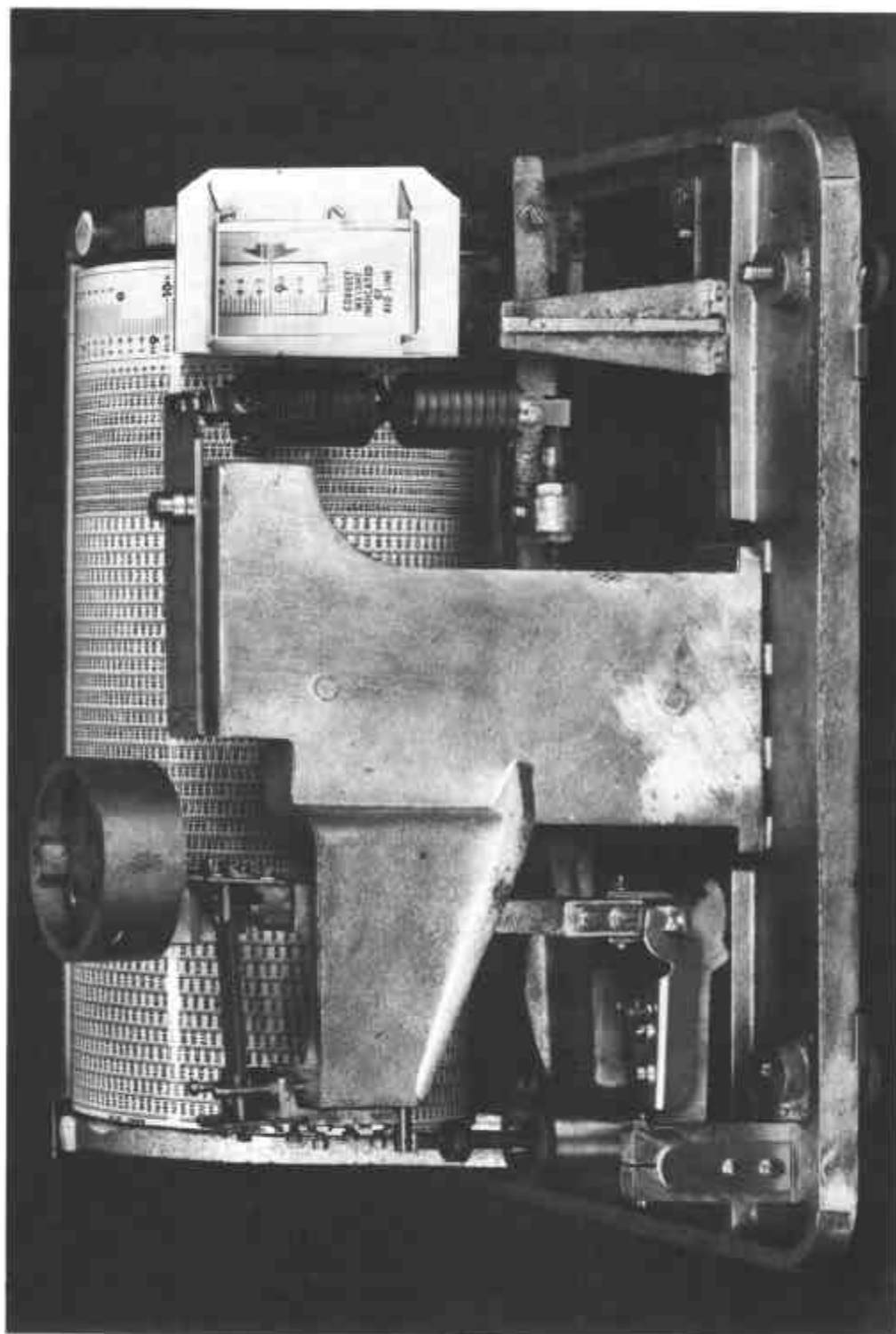
Model HC 10-H - Vendor's Side

FIGURE 6/4D/10 - 2



Model HC 10-H - Purchaser's Side

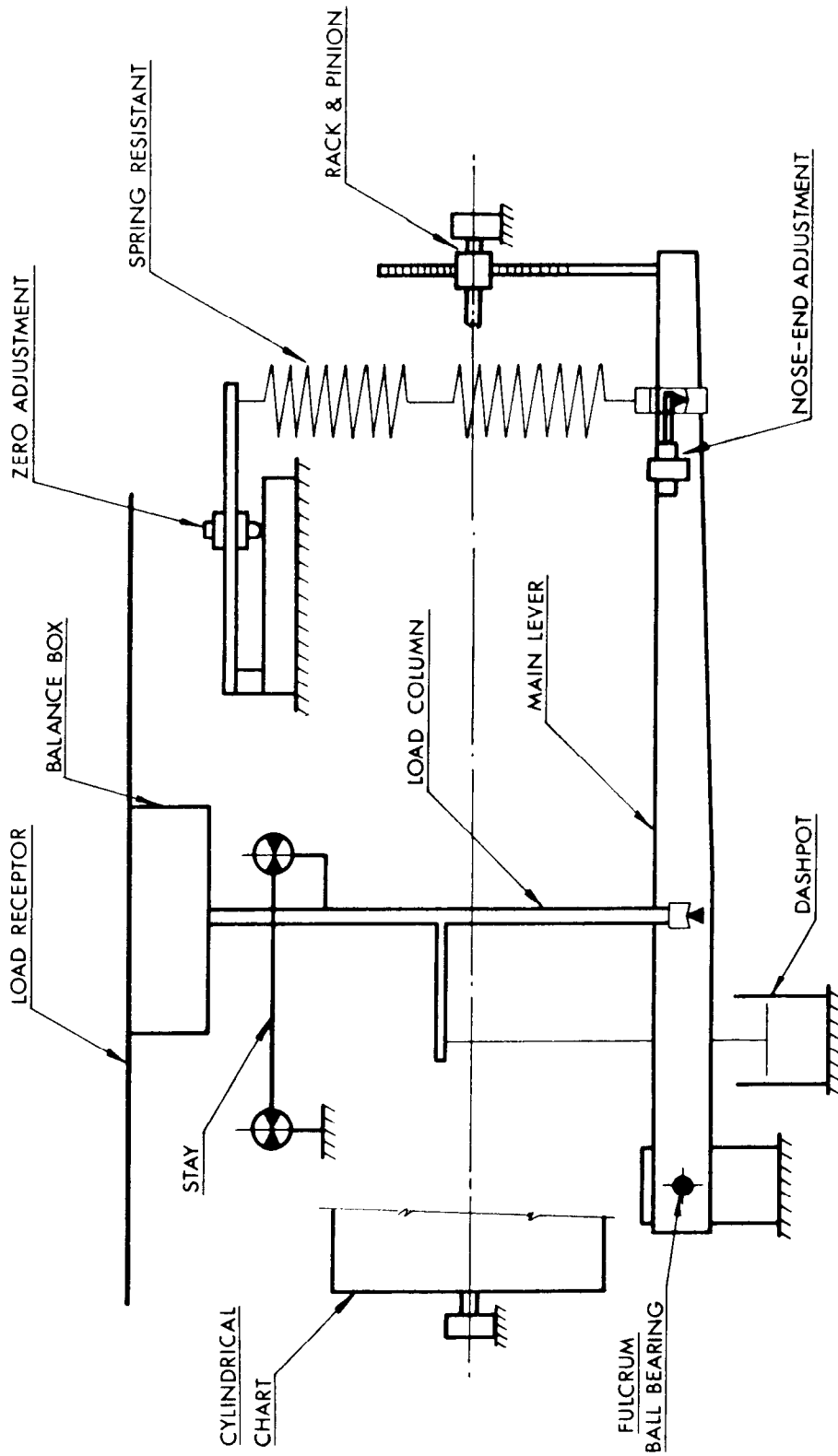
FIGURE 6/4D/10 - 3



Model HC 10-H - Cover Removed

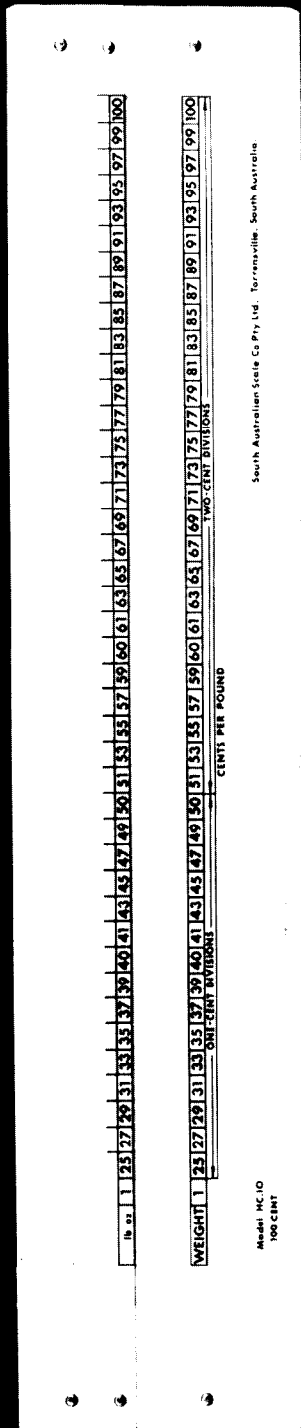


FIGURE 6/4D/10 - 4



Model HC 10-H - Schematic Diagram

FIGURE 6/4D/10 - 5



100-cent Aperture Plate

FIGURE 6/4D/10 - 6

	9	10	11	12	13	14	15	16	17	18	19	20	21	22	23	24	25	26	27	28	29	30	31	32	33	34	35	36	37	38	39	40	41	42	43	44	45	46	47	48	49	50
--	---	----	----	----	----	----	----	----	----	----	----	----	----	----	----	----	----	----	----	----	----	----	----	----	----	----	----	----	----	----	----	----	----	----	----	----	----	----	----	----	----	----

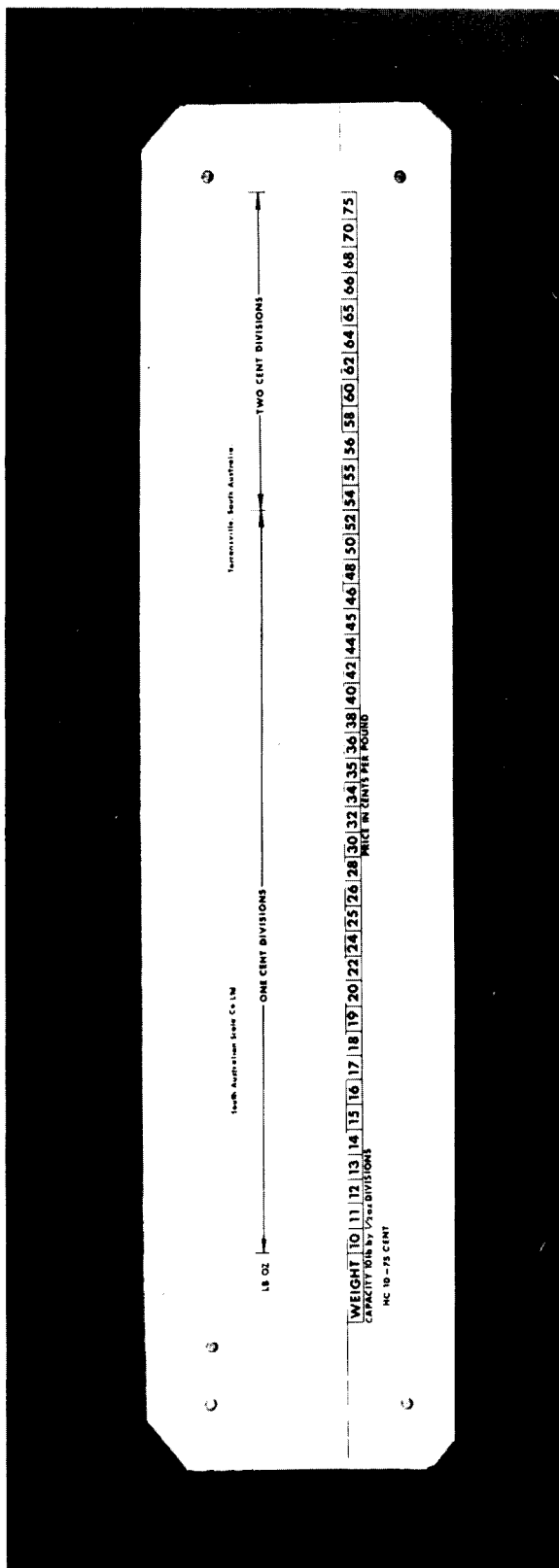
	9	10	11	12	13	14	15	16	17	18	19	20	21	22	23	24	25	26	27	28	29	30	31	32	33	34	35	36	37	38	39	40	41	42	43	44	45	46	47	48	49	50
--	---	----	----	----	----	----	----	----	----	----	----	----	----	----	----	----	----	----	----	----	----	----	----	----	----	----	----	----	----	----	----	----	----	----	----	----	----	----	----	----	----	----

NC 10 - 30 CENT

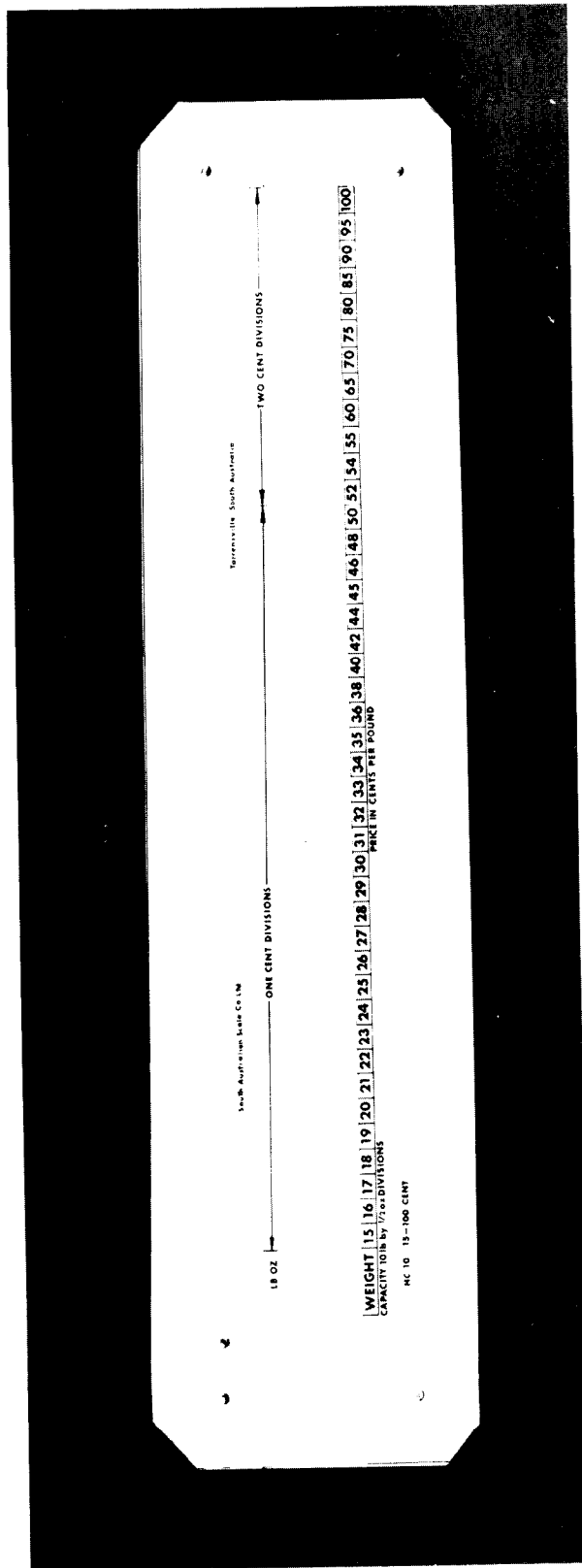
50-cent Aperture Plate

FIGURE 6/4D/10 - 7



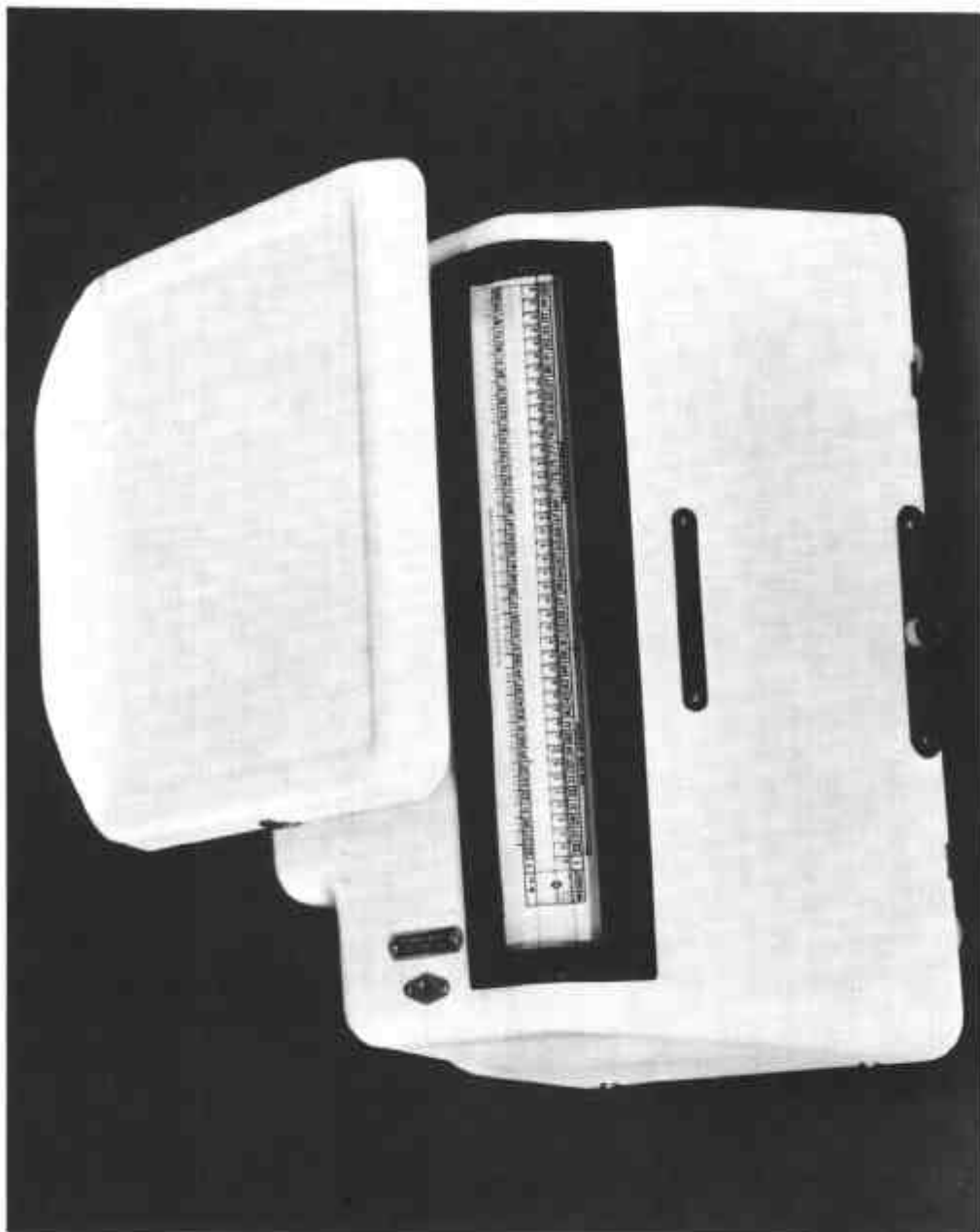
75-cent Aperture Plate

FIGURE 6/4D/10 - 8



15-100 cent Aperture Plate

FIGURE 6/4D/10 - 9



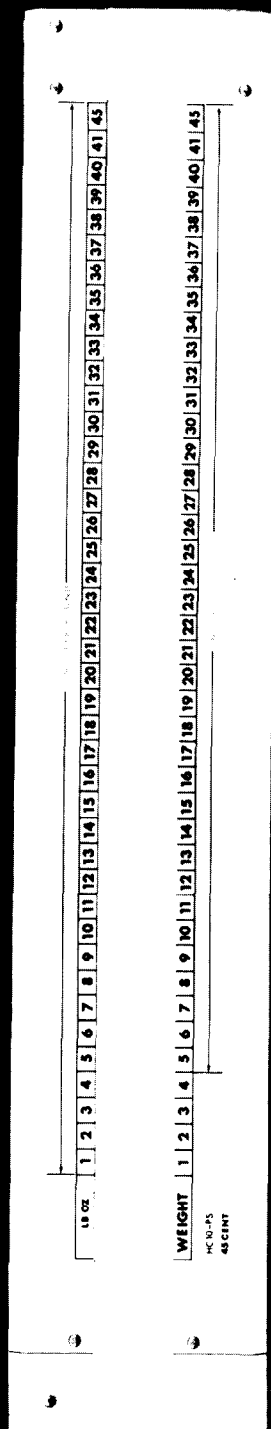
Model HC 10-P - Vendor's Side

FIGURE 6/4D/10 - 10



Model HC 10-S - Price Isolation Device

FIGURE 6/4D/10 - 11



45-cent Aperture Plate