



Weights and Measures
(National Standards)
Act 1960-1964
Weights and Measures
(Patterns of Instruments)
Regulations

CANCELLED *Cont. No. 11*

COMMONWEALTH OF AUSTRALIA

NATIONAL STANDARDS COMMISSION

Certificate of Approval

CERTIFICATE NUMBER 6/4B/3

In respect of the pattern of

Avery Model 1304 BCH Partly Self-indicating Counter Machine and Variants 1 to 8.

Submitted by: W. & T. Avery (Australia) Pty. Ltd.,
3-5 Birmingham Avenue,
Villawood,
New South Wales. 2163.

This is to certify that the pattern and variants of the instrument illustrated and described in this Certificate have been examined by the National Standards Commission under the provisions of the abovementioned Regulations and have been approved as being suitable for use for trade.

Approval was granted for:

1. The pattern and variants 1 to 6 and 8 on 24th April, 1967.
2. Variant 7 on 2nd June, 1967.

Approval was granted on condition that all instruments made in conformity with the pattern or its variants:

1. are appropriately marked NSC No 6/4B/3; and

26/9/69

Cont'd over

2. comply with the General Specifications for Weighing and Measuring Instruments to be Used for Trade.

This Certificate comprises:

Pages 1 to 4 dated 26th September, 1969.

Figures 6/4B/3 - 1 to 5 dated 26th September, 1969.

Signed



Date of issue 26th September, 1969.

26/9/69

DESCRIPTION

The pattern (see Figure 1) is a partly self-indicating counter machine of 20 lb capacity the mechanism of which is shown diagrammatically in Figure 2.

The weighing mechanism (see Figure 3) is of the Beranger type fitted with an oil dashpot, in which a covered balance box is fitted to each of the two cradles.

The indicating mechanism (see Figure 4) consists of a shaft fitted with a pendulous weight resistant, a cam and an indicator the tip of which is cranked so that it moves in a slot in the same plane as the chart and is visible from each side of the instrument. A steel ribbon is connected at one end through a weighted lever to the weight receptor cradle and at the other end passes over and is secured to the cam.

It is fitted with a double-sided weight chart of capacity 1 lb by $\frac{1}{4}$ oz graduations.

The chart housing is at right angles to the main beam.

The instrument is supported on four adjustable feet and is fitted with a circular spirit level.

SCHEDULE OF VARIANTS

1. The pattern, fitted with a weight chart of capacity 2 lb by $\frac{1}{2}$ oz graduations.
2. The pattern or variant 1, of 30 lb capacity.
3. The pattern, of 10 kg or 15 kg capacity, with weight charts of capacity 1 kg by 10 g or 250 g by 2 g or 500 g by 5 g graduations.
4. The pattern or variant 2, fitted with a double-sided weight

26/9/69

chart of capacity 1 lb 8 oz by $\frac{1}{4}$ oz graduations and a price-computing chart marked "37231-169" and indicator marked "38662-664" (see Figure 5), on the vendor's side.

5. The pattern, or variant 2, fitted with a centre-zero weight chart of capacity 8 oz by $\frac{1}{4}$ oz graduations on both sides of zero which is marked "heavy" and "light" and "for factory use only", all inscriptions on the light side being in red and the remainder in black.
6. Variant 3 fitted with a centre-zero weight chart of capacity 250 g by 5 g graduations on both sides of zero which is marked "heavy" and "light" and "for factory use only", all inscriptions on the light side being in red and the remainder in black.
7. The pattern or variants 2 or 3, fitted with a weight chart of capacity 1 lb by $\frac{1}{4}$ oz graduations (in black) on the upper edge of the slot and of capacity 500 g by 5 g (in red) on the lower edge of the slot and marked "for factory use only".
8. With the chart housing parallel to the main beam.

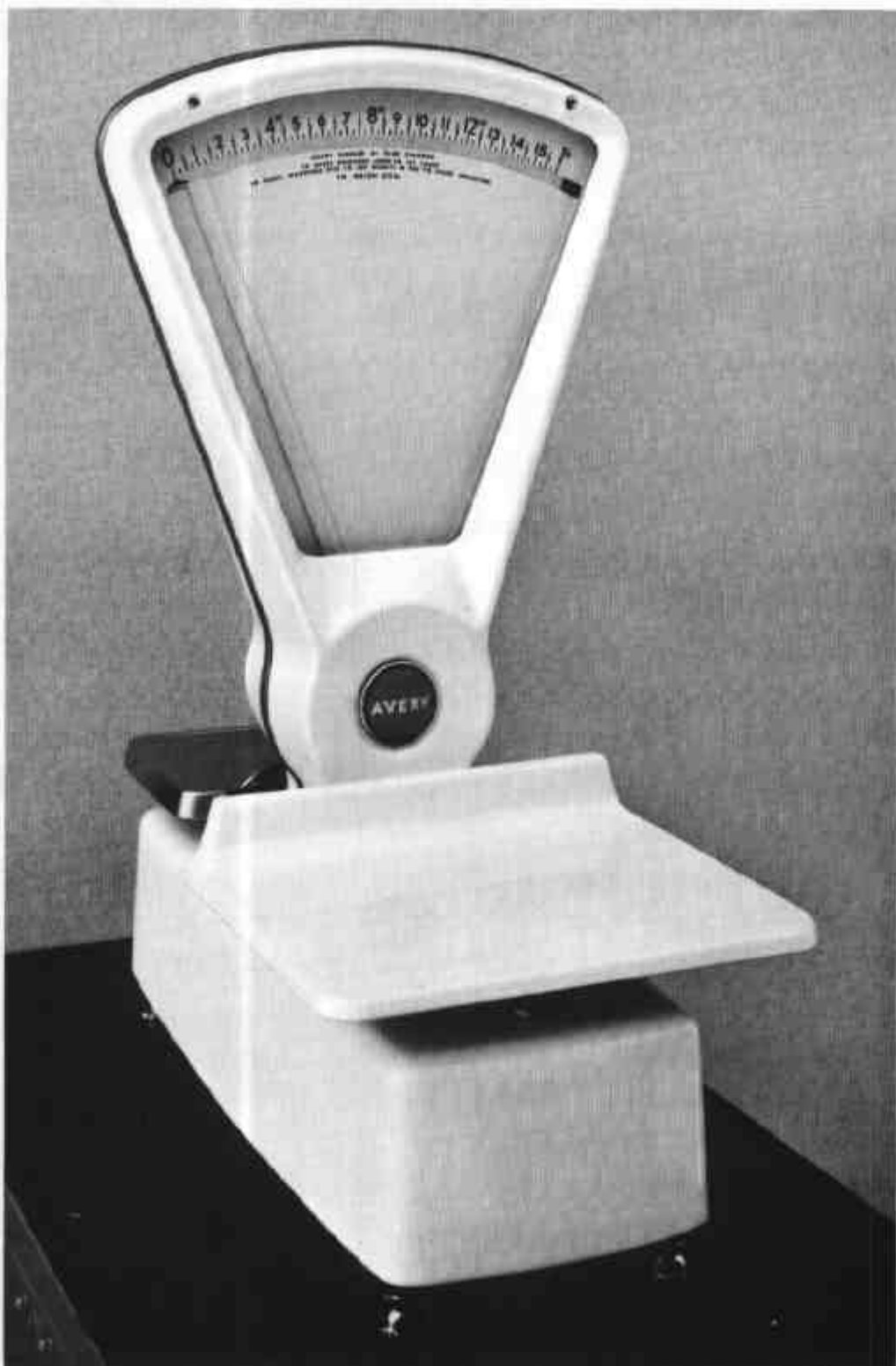
GENERAL NOTES

Notice of approval of the pattern and variants described in this Certificate was given in the following Memoranda of Approval:

No 59 dated 28th April, 1967.

No 70 dated 5th June, 1967.

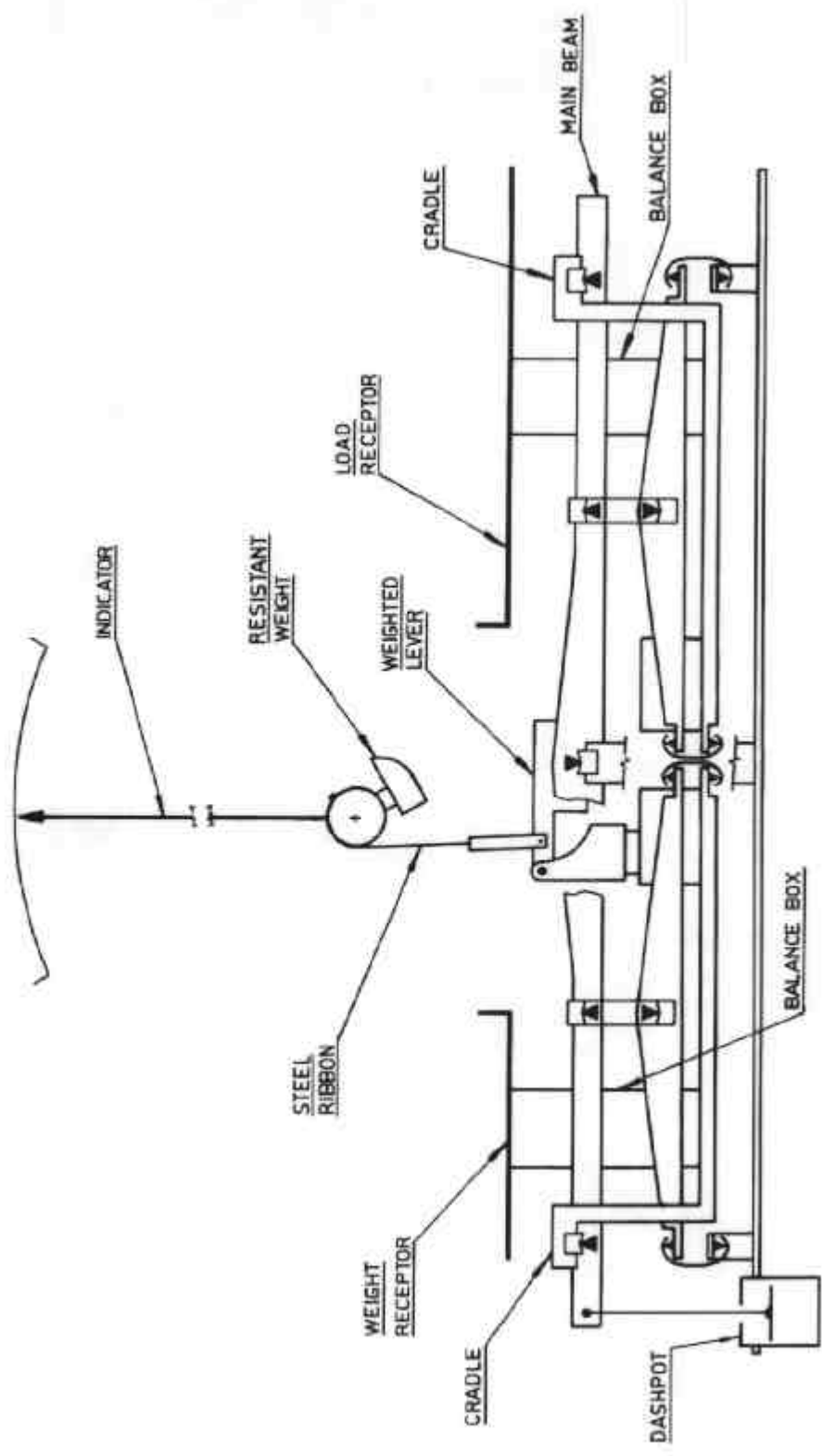
FIGURE 6/4B/3 - 1



Avery Model 1304 BCH

26/9/69

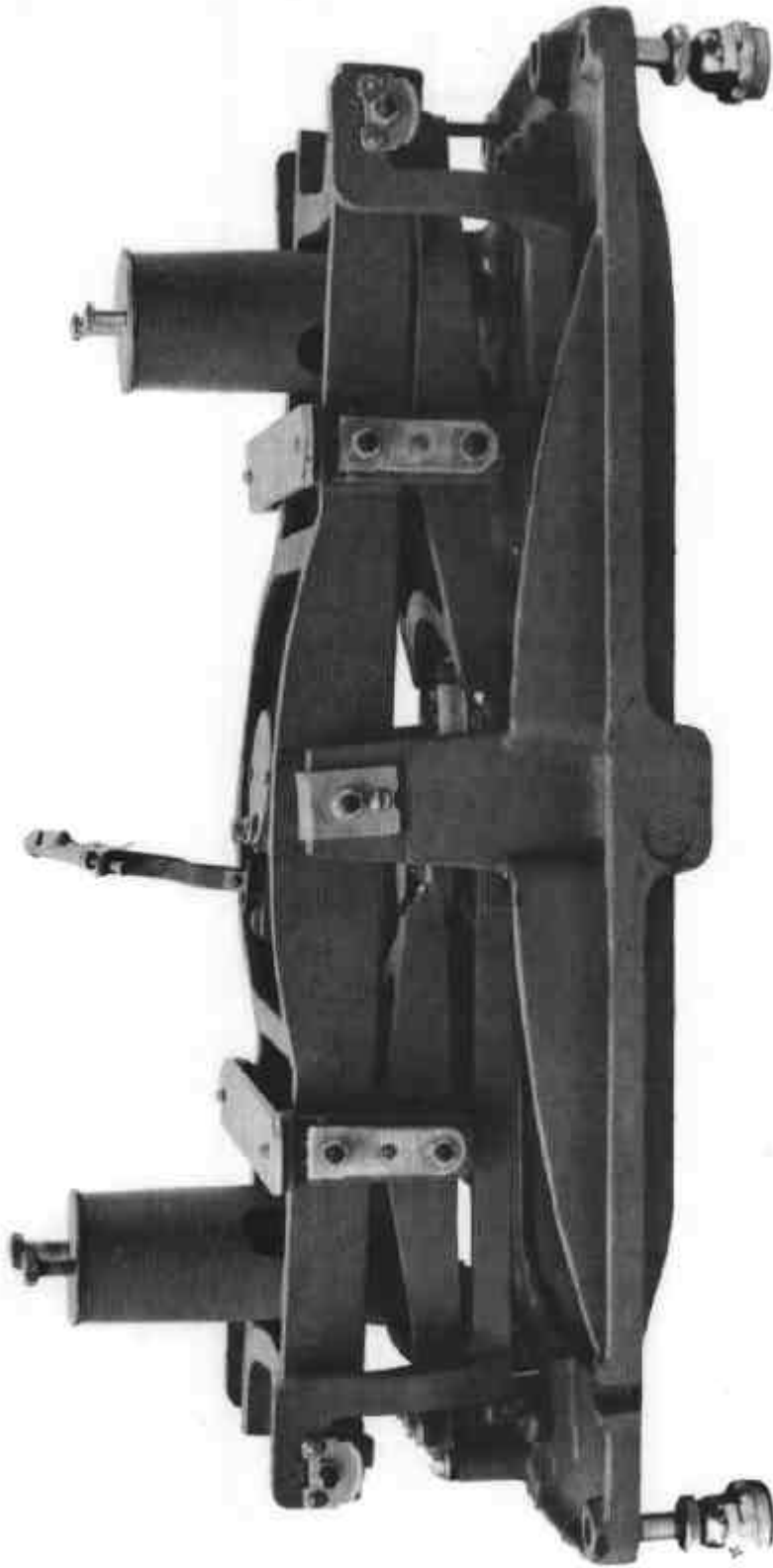
FIGURE 6/4B/3 - 2



Lever and Indicating Mechanism

26/9/69

FIGURE 6/4B/3 - 3



Weighing Mechanism

26/9/69

FIGURE 6/4B/3 - 4



Indicating Mechanism

26/9/69

FIGURE 6/4B/3 - 5

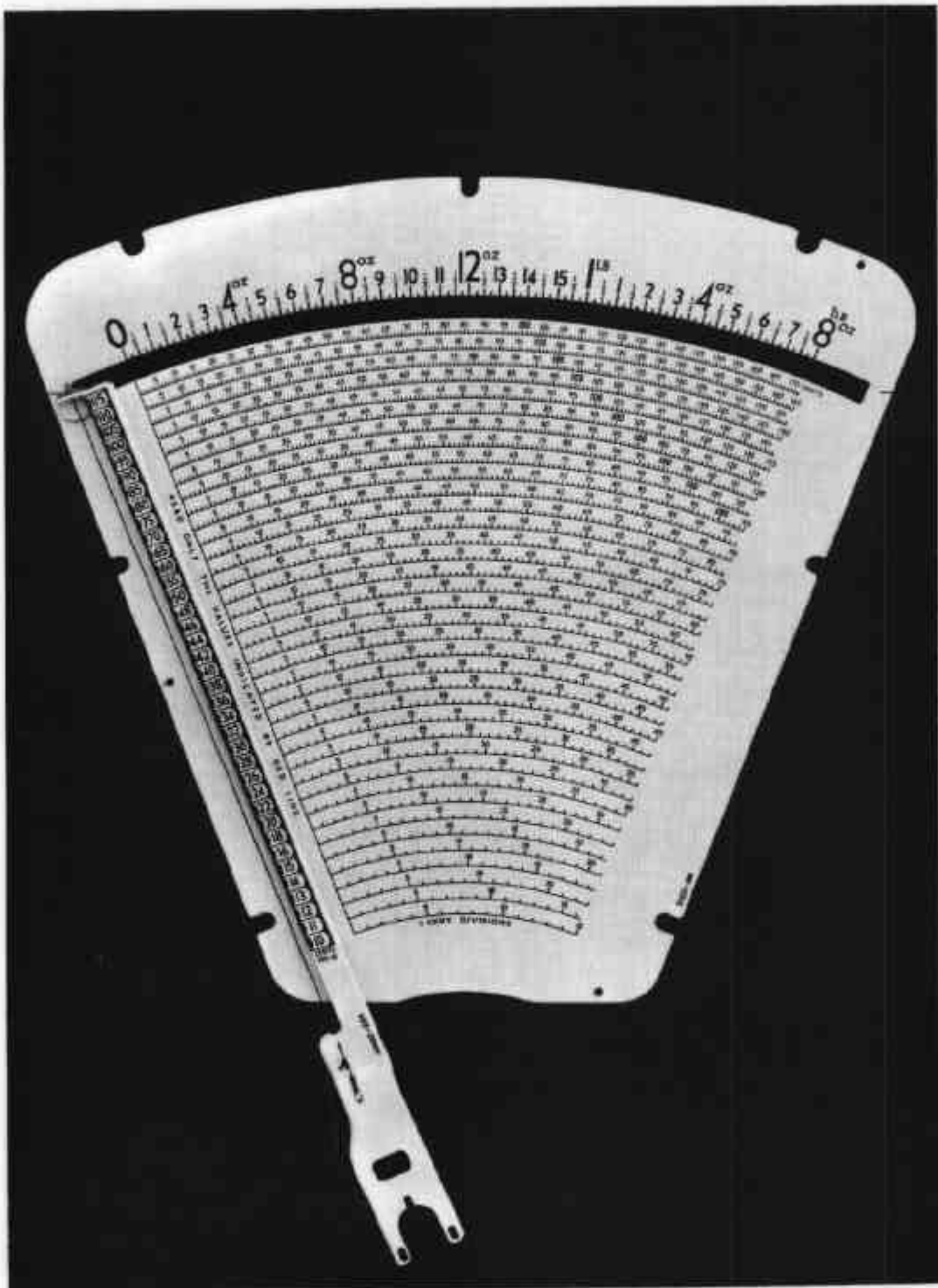


Chart 37231-169 and Indicator 38662-664

26/9/69