



NATIONAL STANDARDS COMMISSION

TECHNICAL SCHEDULE No 6/4A/8

Pattern: Suprema K5 Weighing Instrument

Submittor: J. W. Wedderburn & Sons Pty Ltd,
90 Parramatta Road,
Summer Hill, New South Wales, 2130.

Date of Approval: 10 September 1974

All instruments conforming to this approval shall be marked "NSC No 6/4A/8".

Description:

The pattern (see Figure 1) is of a partly self-indicating weighing instrument of maximum capacity 5 kg. The pattern has a centre-zero dial on one or both sides of the instrument. Each dial has a maximum of 40 graduations over a deflection of 50 degrees, that is, a maximum of 0,8 graduation per degree (see Figure 2). A level indicator is fitted.

The headwork mechanism which is illustrated in Figure 3 may be parallel or at right angles to the centre line of the main lever.

The three-lever-system basework is illustrated in Figures 4, 5 and 6.

The instrument is marked "not for retail counter use".



NATIONAL STANDARDS COMMISSION

CANCELLATION OF CERTIFICATE OF APPROVAL No 6/4A/8

This is to certify that Certificate of Approval No 6/4A/8 for the pattern and variants of the

Suprema Model K5 Weighing Instrument

submitted by J W Wedderburn & Sons Pty Ltd
90 Parramatta Road
Summer Hill, NSW, 2130

will expire* in respect of new instruments on 1/1/83.

Instruments which were verified on or before 31/12/82 may, with the concurrence of the State or Territorial verifying authorities, be submitted for reverification.

Signed

Executive Director

*Instruments conforming to the pattern do not comply with the current design rules.

3/12/82



28/11/74

Suprema K5

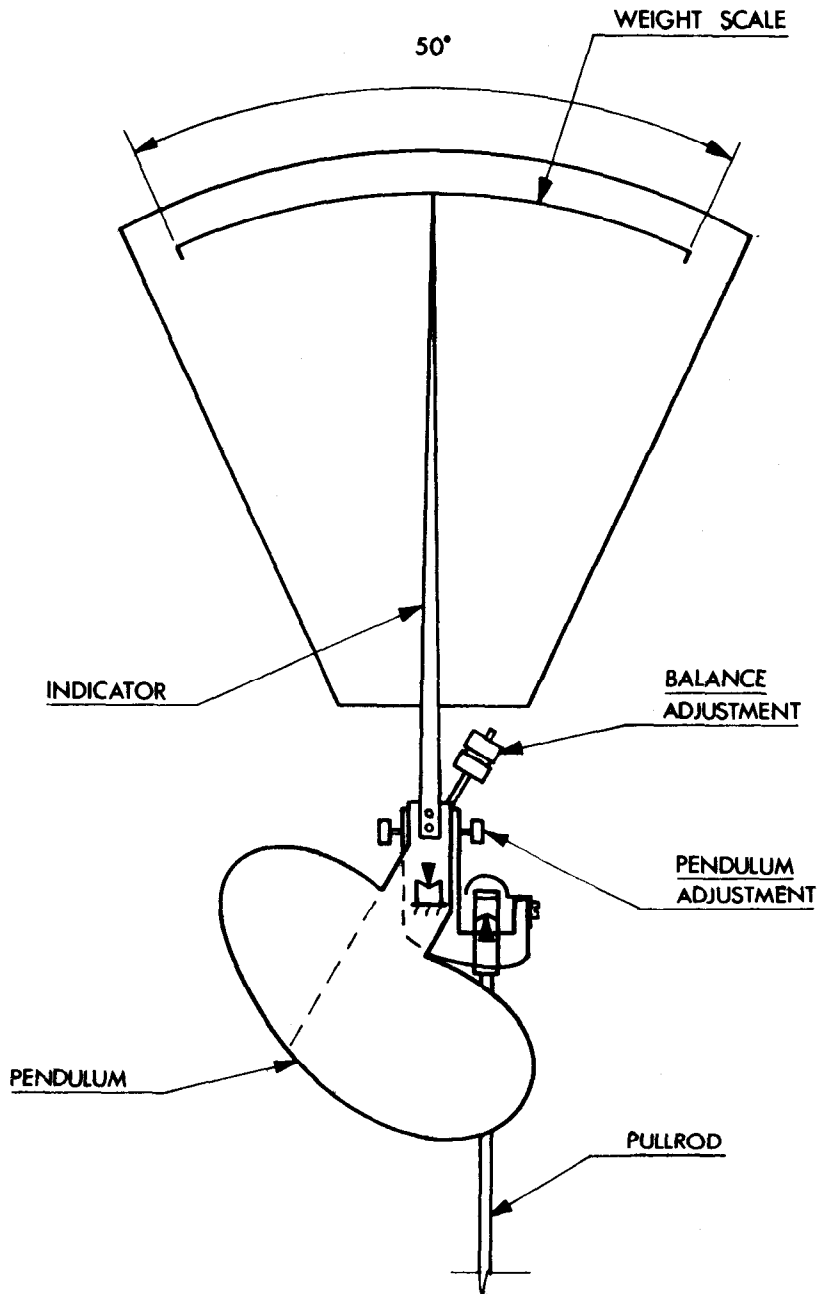
FIGURE 6/4A/8 - 2



Centre-zero Dial 0 - 100 g

28/11/74

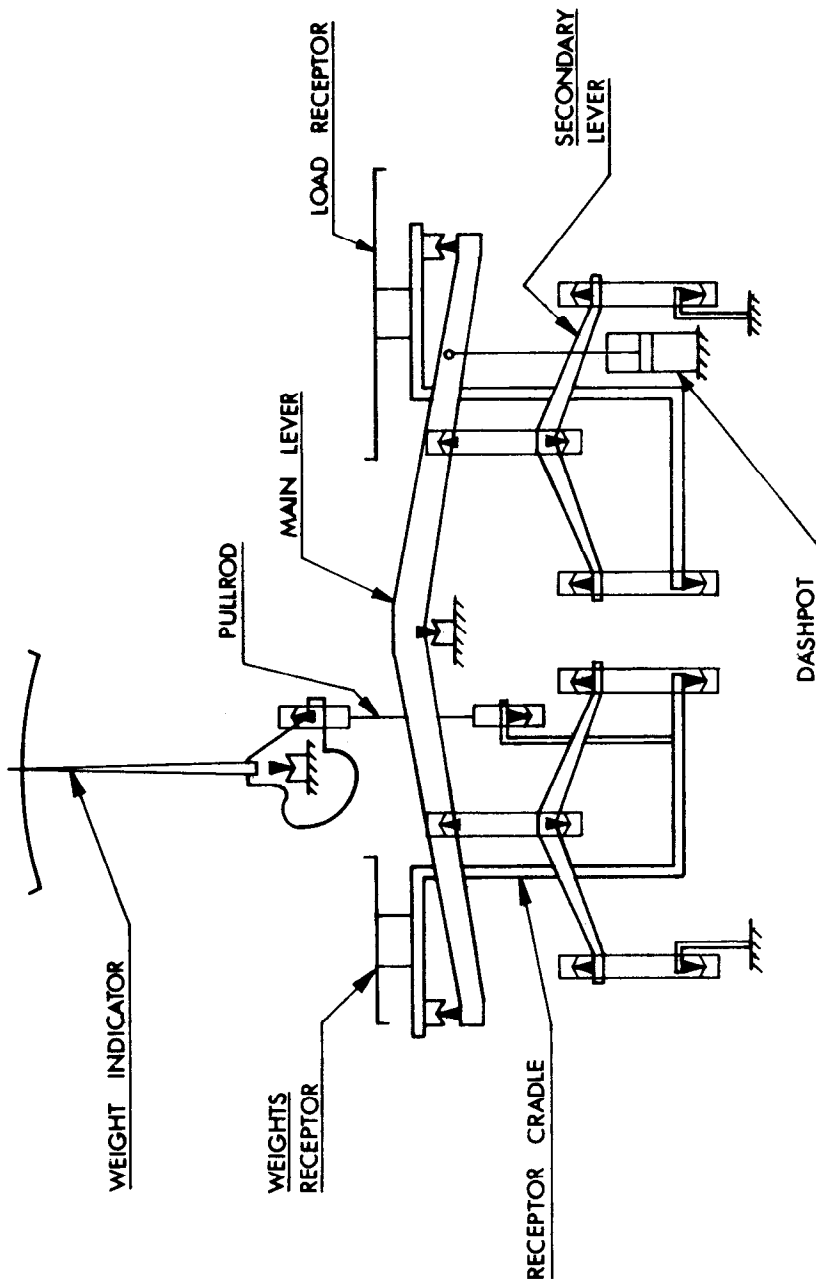
FIGURE 6/4A/8 - 3



Pendulum-resistant Mechanism — Schematic Diagram

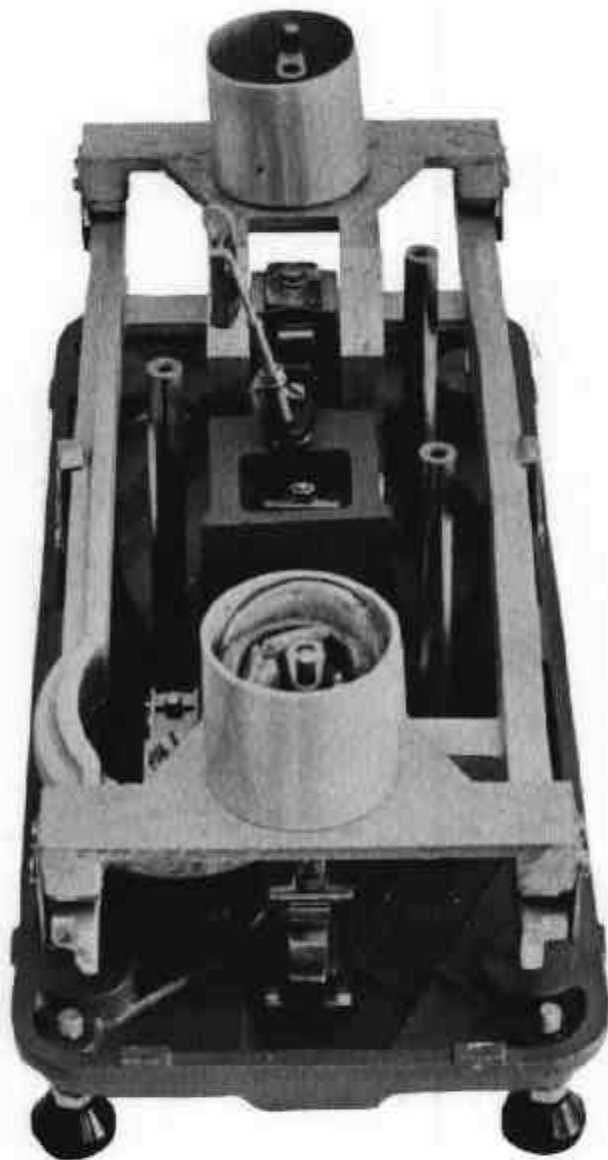
28/11/74

FIGURE 6/4A/8 - 4



Lever System — Schematic Diagram

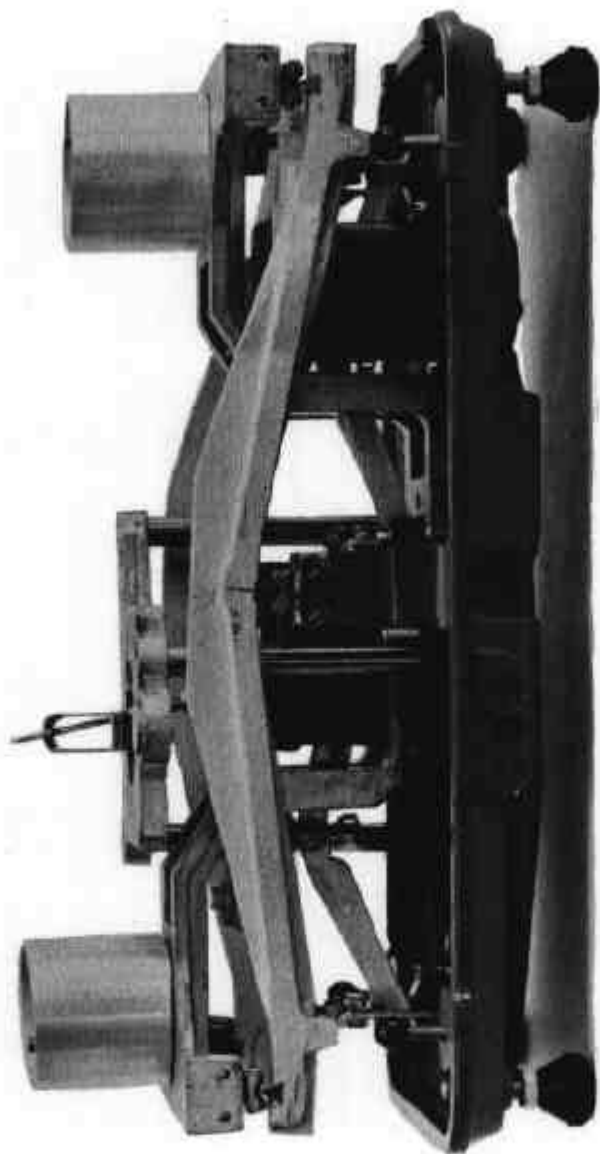
FIGURE 6/4A/8 - 5



Suprema K5 — Lever System

28/11/74

FIGURE 6/4A/8 - 6



Suprema K5 — Lever System

28/11/74