



NATIONAL STANDARDS COMMISSION

CANCELLED

Cert. No. 6/4A/17
7/11

CERTIFICATE OF APPROVAL No 6/4A/17

This is to certify that the pattern and variants of the

Avery Weighing Instrument Model 1307 BFP

submitted by Avery Australia Ltd,
3-5 Birmingham Avenue,
Villawood, New South Wales, 2163,

have been approved under the Weights and Measures (Patterns of
Instruments) Regulations as being suitable for use for trade.

Date of Approval: 9 November 1978

The pattern and variants are described in Technical Schedule No
6/4A/17 and in drawings and specifications lodged with the Commission.

The approval is subject to review on or after 1 November 1983.

All instruments conforming to this approval shall be marked with the
approval number "NSC No 6/4A/17".

Signed

Executive Director

15/9/79



NATIONAL STANDARDS COMMISSION

TECHNICAL SCHEDULE No 6/4A/17

Pattern: Avery Weighing Instrument Model 1307 BFP

Submittor: Avery Australia Ltd,
3-5 Birmingham Avenue,
Villawood, New South Wales, 2163.

Date of Approval: 9 November 1978

All instruments conforming to this approval shall be marked "NSC No 6/4A/17".

Description of Pattern:

The pattern is an Avery Model 1307 BFP partly self-indicating weighing instrument of maximum capacity 30 kg with, on both sides of the instrument, a centre-zero mass reading face of capacity ± 500 g by 10 g scale intervals (Figures 1 and 2). Under-and-over mass indications are denominated by a minus sign and a plus sign.

The instrument is marked adjacent to each mass reading face:

III

Max	=	30 kg
Min	=	0,2 kg
d = e	=	10 g

and NOT FOR RETAIL COUNTER USE.

The basework comprises a Beranger lever system with balance boxes beneath the mass receptor and the load receptor (Figures 3 and 4). A steel tape around a cam on the indicator connects the main beam to a spring-resistant mechanism (Figure 5). A screwdriver-operated zero device adjusts a spring-resistant mechanism connected to a cradle on the main beam. An oil-filled dashpot is provided.

The instrument is fitted with adjustable feet; a level indicator is not required and is not fitted.

Description of Variants:

1. With a centre-zero mass reading face of capacity ± 250 g by

5 g scale intervals;

2. with a centre-zero mass reading face of capacity ± 200 g by 5 g scale intervals.

FIGURE 6/4A/17 - 1



Avery Model 1307 BFP

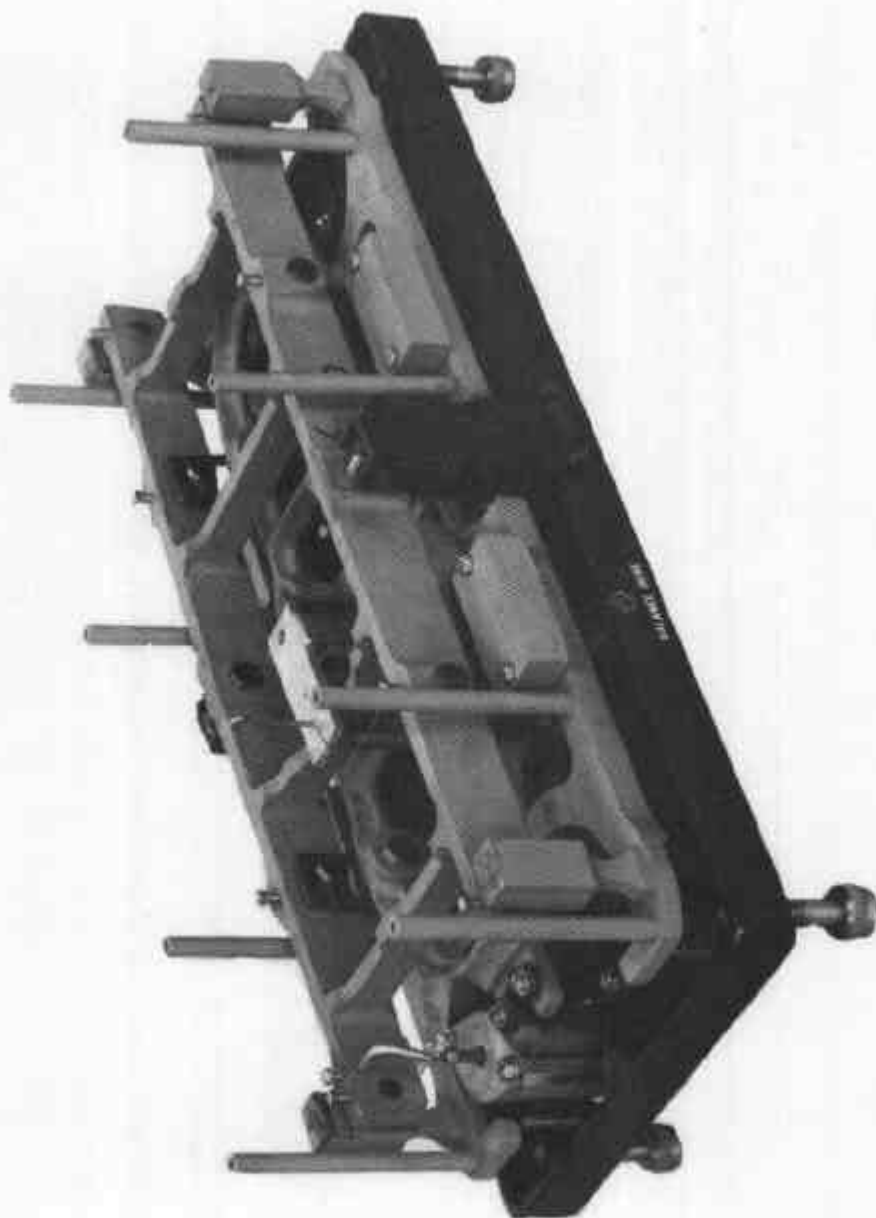
15/9/79

FIGURE 6/4A/17 - 2



Avery 1307 BFP — Reading Face

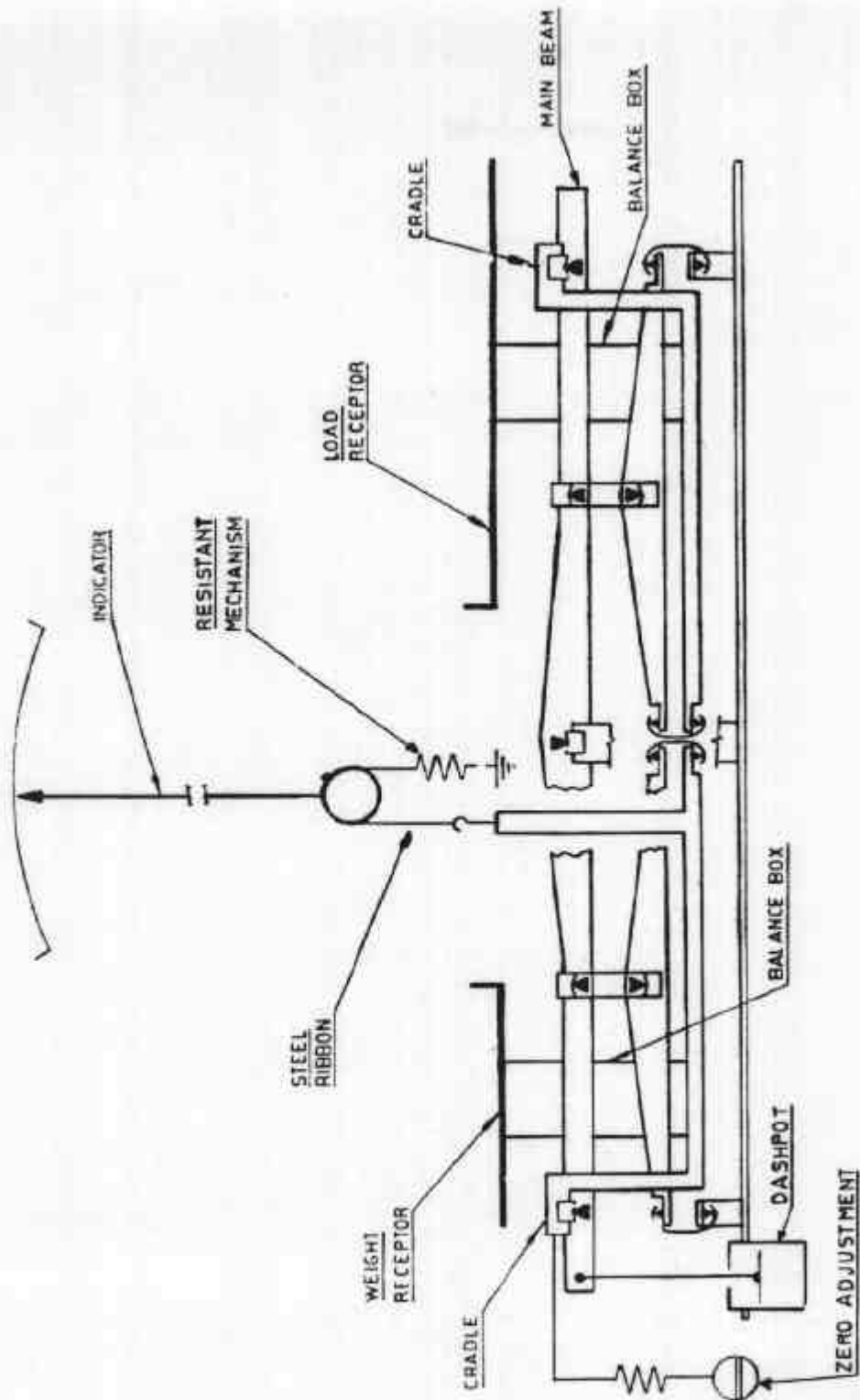
FIGURE 6/4A/17 - 3



Avery 1307 BFP --- Basework

15/9/79

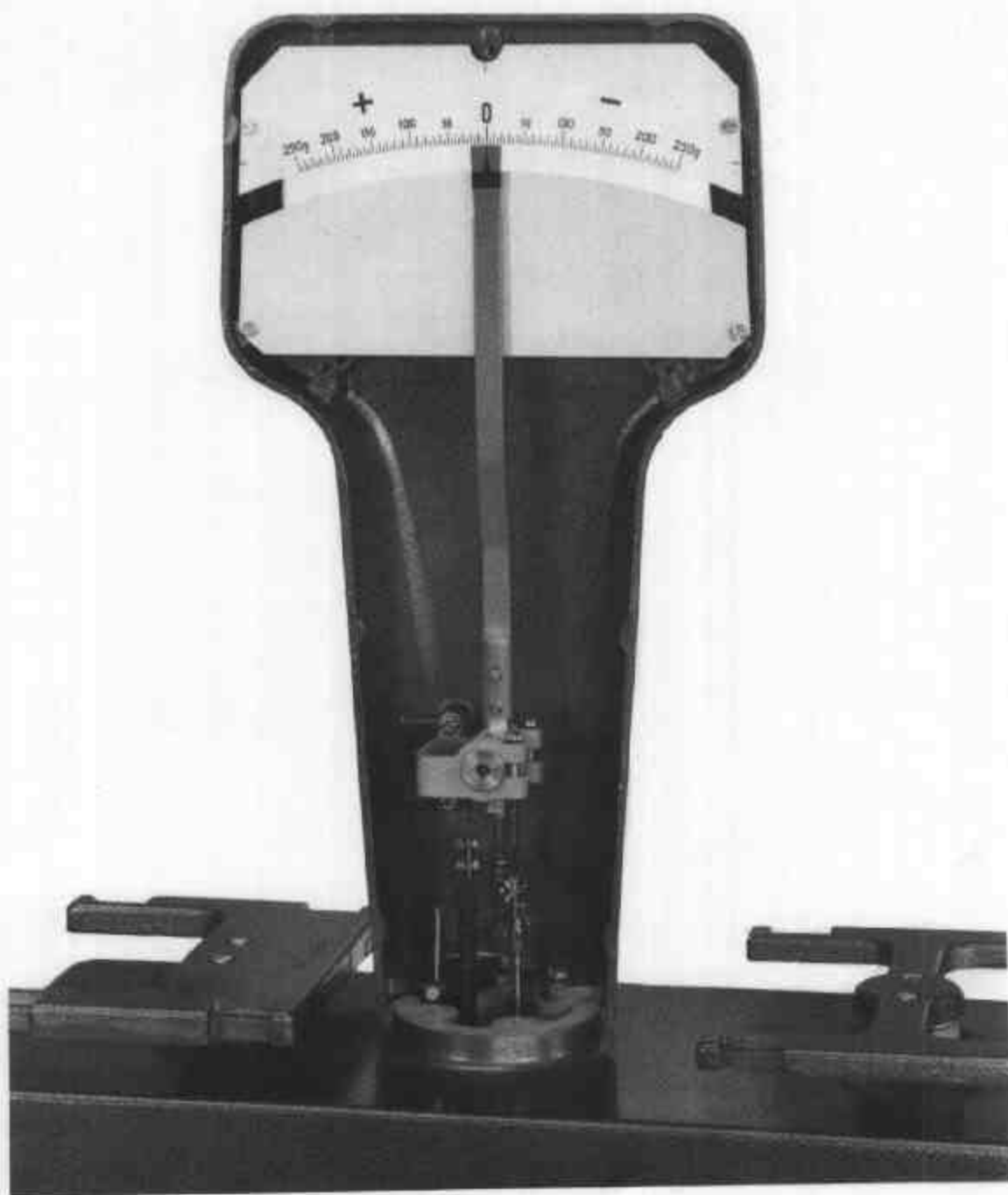
FIGURE 6/4A/17 - 4



15/9/79

Avery 1307 BPP — Lever and Resistant Mechanism — Schematic Diagram

FIGURE 6/4A/17 - 5



Avery 1307 BFP — Headwork with Cover Removed

15/9/79