



**CANCELLED**

Coord No  
9/11

**NATIONAL STANDARDS COMMISSION**

CERTIFICATE OF APPROVAL No 6/4A/16

This is to certify that the pattern and variants of the  
Avery Weighing Instrument Model 1308 BFP

submitted by Avery Australia Ltd,  
3-5 Birmingham Avenue,  
Villawood, New South Wales, 2163,

have been approved under the Weights and Measures (Patterns of  
Instruments) Regulations as being suitable for use for trade.

Date of Approval: 31 October 1978

The pattern and variants are described in Technical Schedule No  
6/4A/16 and in drawings and specifications lodged with the Commission.

The approval is subject to review on or after 1 November 1983.

All instruments conforming to this approval shall be marked with  
the approval number "NSC No 6/4A/16".

Signed

Executive Director

14/9/79



# NATIONAL STANDARDS COMMISSION

## TECHNICAL SCHEDULE No 6/4A/16

Pattern: Avery Weighing Instrument Model 1308 BFP

Submittor: Avery Australia Ltd,  
3-5 Birmingham Avenue,  
Villawood, New South Wales, 2163.

Date of Approval: 31 October 1978

All instruments conforming to this approval shall be marked "NSC No 6/4A/16".

### Description of Pattern:

The pattern is an Avery Model 1308 BFP partly self-indicating weighing instrument of maximum capacity 50 kg with, on both sides of the instrument, a centre-zero mass reading face of capacity  $\pm 500$  g by 20 g scale intervals (Figures 1 and 2). Under-and-over mass indications are denominated by a minus and a plus sign.

The instrument is marked adjacent to each mass reading face:

(III)

Max	=	50 kg
Min	=	0,4 kg
d = e	=	20 g

and NOT FOR RETAIL COUNTER USE.

The basework comprises a Beranger lever system with balance boxes beneath the mass receptor and the load receptor (Figures 3 and 4). A steel tape around a cam on the indicator connects the main beam to a spring-resistant mechanism (Figure 5). A screwdriver-operated zero device adjusts a spring-resistant mechanism connected to a cradle on the main beam. An oil-filled dashpot is provided.

The instrument is fitted with adjustable feet; a level indicator is not required and is not fitted.

Description of Variant:

With a centre-zero mass reading face of capacity  $\pm 250$  g by 10 g scale intervals.

14/9/79

FIGURE 6/4A/16 - 1



Avery Model 1308 BFP

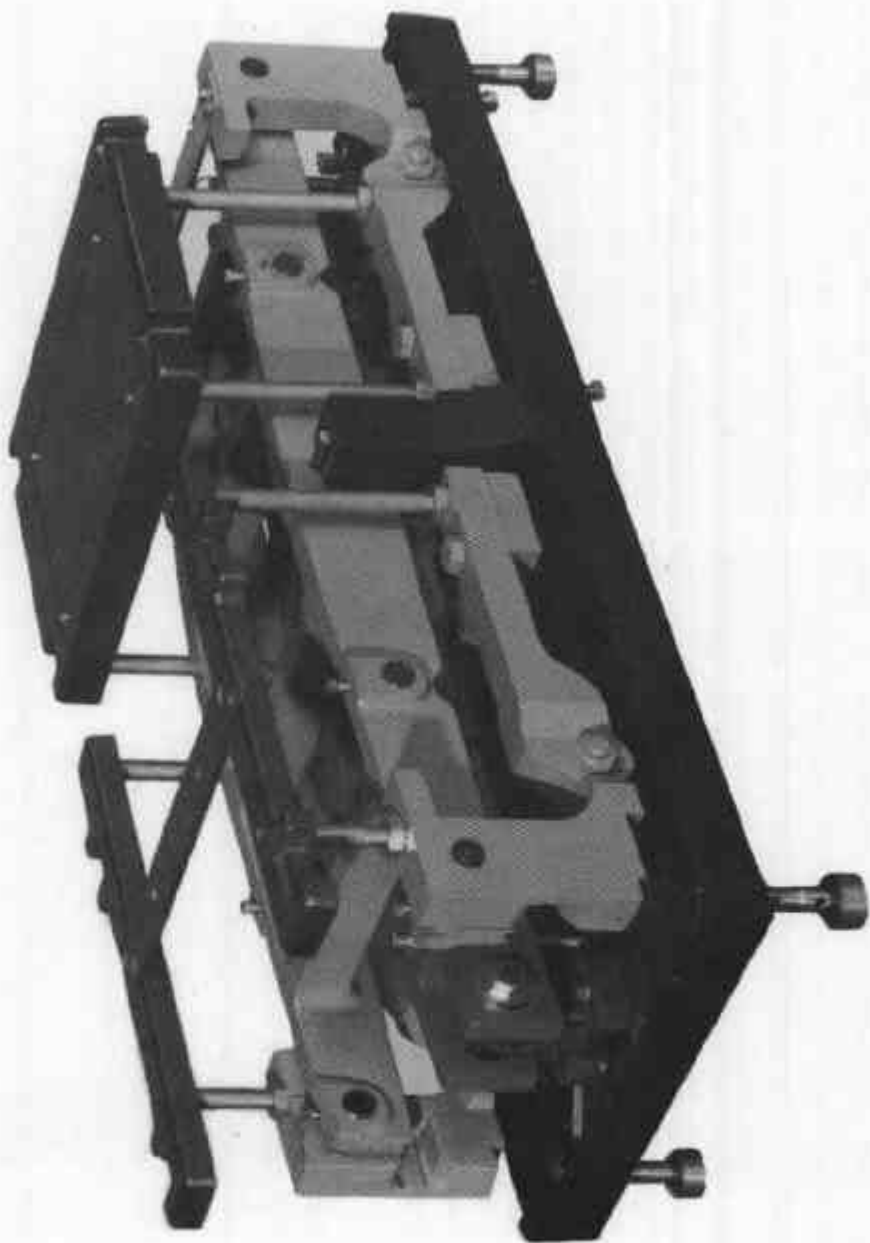
14/9/79

FIGURE 6/4A/16 - 2



Avery 1308 BFF — Reading Face

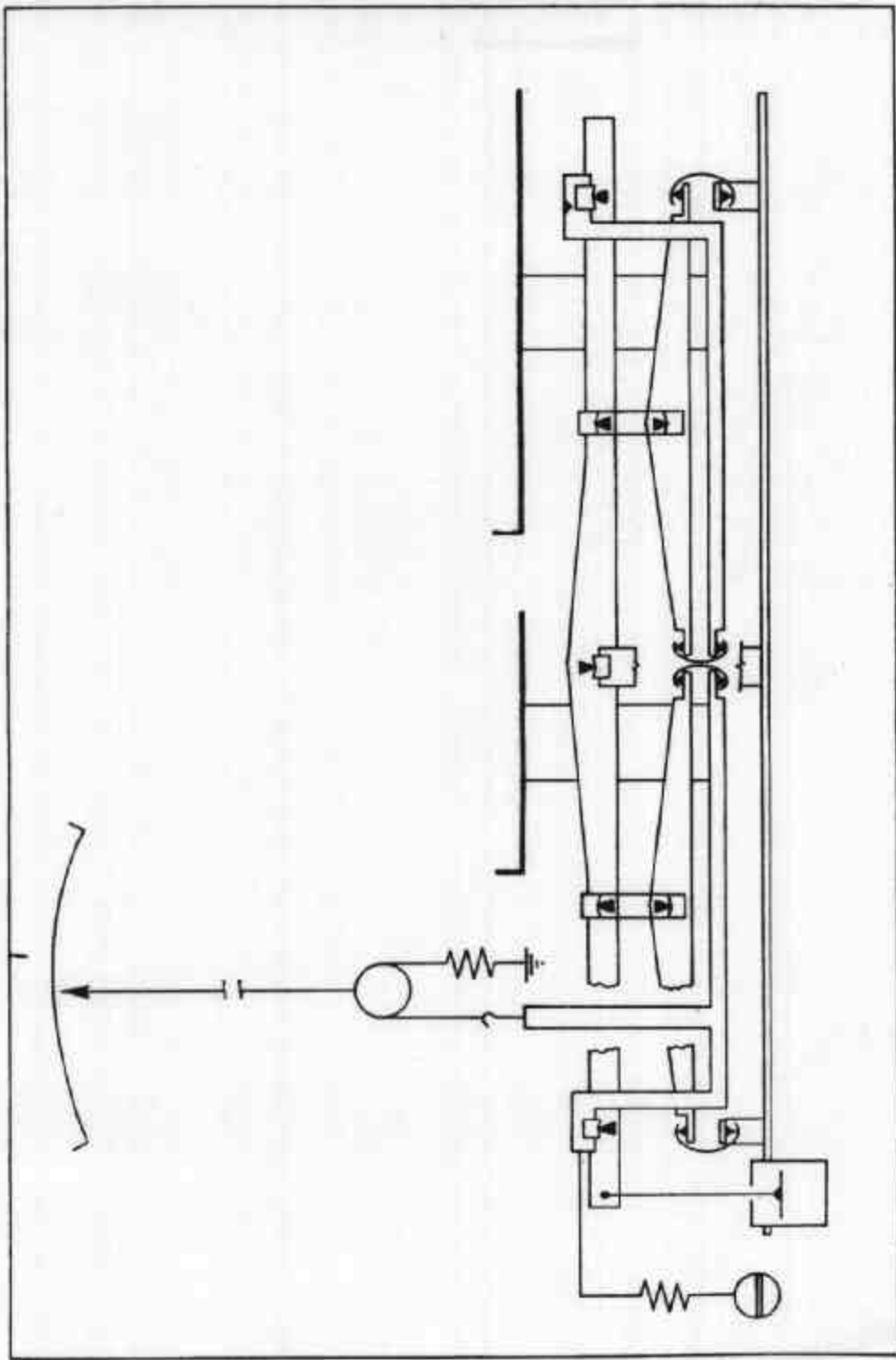
FIGURE 6/4A/16 - 3



Avery 1308 BFP — Basework

14/9/79

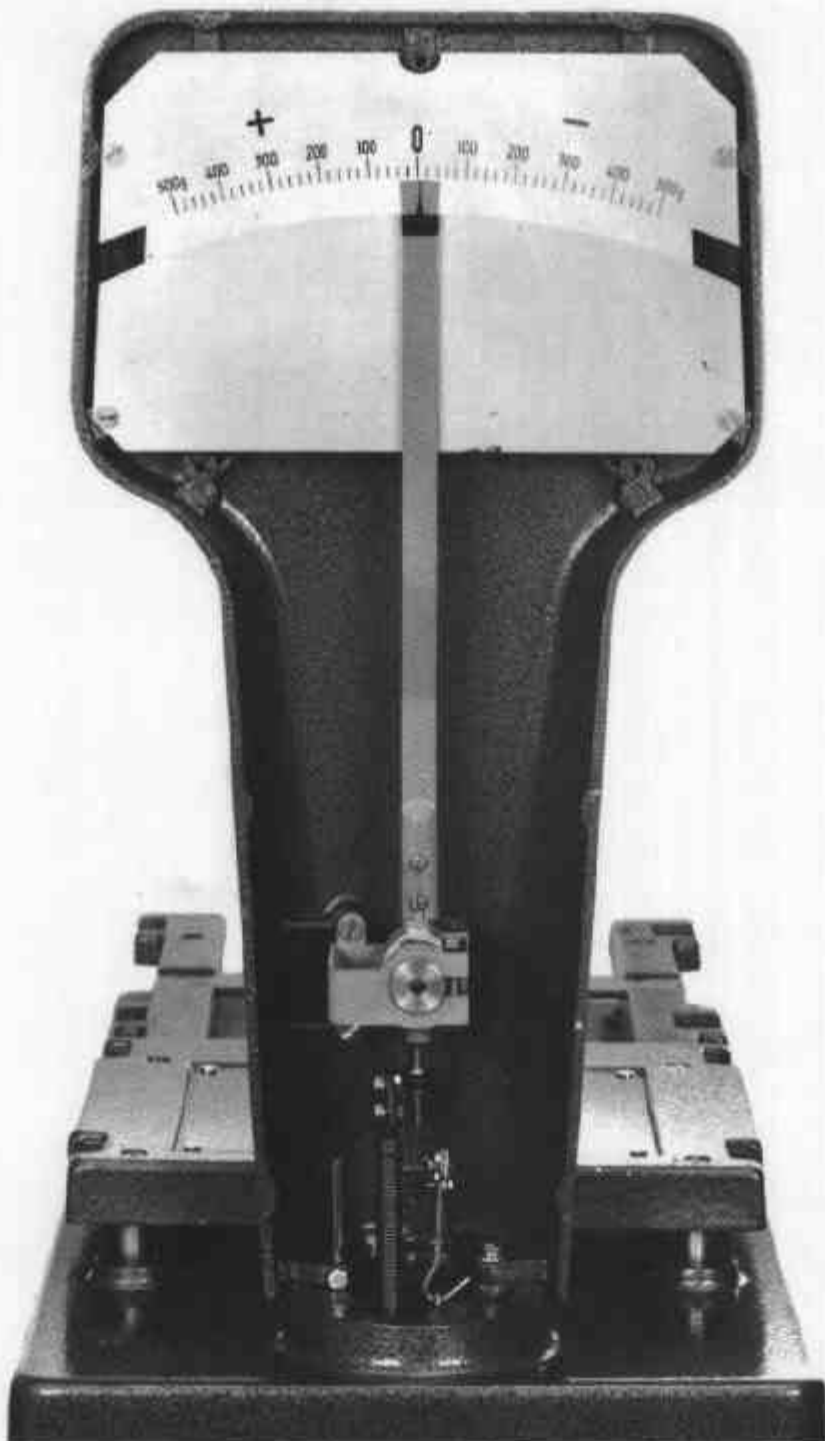
FIGURE 6/4A/16 - 4



14/9/79

Avery 1308 BFP — Lever and Resistant Mechanism — Schematic Drawing

FIGURE 6/4A/16 - 5



Avery 1308 BFP — Headwork with Cover Removed

14/9/79