

Correspondence: Executive Officer
P.O. Box 282 NORTH RYDE
N.S.W. 2113
Telegrams: NATSTANCOM SYDNEY
Telephone: 888 3922

CERTIFICATE OF APPROVAL No 6/4A/14

This is to certify that the patterns of the
Avery Weighing Instrument Model 1306 BFP

CANCELLED

submitted by Avery Australia Ltd,
3-5 Birmingham Avenue,
Villawood, New South Wales, 2163,

0/1

have been approved under the Weights and Measures (Patterns of Instruments)
Regulations as being suitable for use for trade.

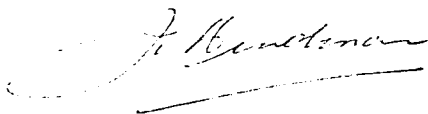
Date of Approval: 6 July 1978

The patterns are described in Technical Schedule No 6/4A/14, and in
drawings and specifications lodged with the Commission.

The approval is subject to review on or after 1 August 1983.

All instruments conforming to this approval shall be marked with the
approval number "NSC No 6/4A/14".

Signed



Assistant Executive Officer



CANCELLED

Case No. 9/1

NATIONAL STANDARDS COMMISSION

TECHNICAL SCHEDULE No 6/4A/14

Pattern: Avery Weighing Instrument Model 1306 BFP

Submittor: Avery Australia Ltd,
3-5 Birmingham Avenue,
Villawood, New South Wales, 2163.

Date of Approval: 6 July 1978

All instruments conforming to this approval shall be marked "NSC No 6/4A/14".

Description:

The pattern is an Avery Model 1306 BFP partly self-indicating weighing instrument of maximum capacity 10 kg with a centre-zero weight reading face of capacity ± 250 g by 5 g scale intervals on both sides of the instrument (see Figures 1 and 2). Under-and-over weight indications are denominated by a - (minus) and + (plus) sign.

The instrument is marked adjacent to each weight reading face:

III

| | | |
|-----|---|--------|
| Max | = | 10 kg |
| Min | = | 0,1 kg |
| d | = | 5 g |
| e | = | 5 g |

and "not for retail counter use".

The basework comprises a Beranger type lever system with balance boxes beneath the weight receptor and the load receptor (see Figures 3, 4 and 5). A steel tape around a cam on the indicator connects the main beam to a spring-resistant mechanism. A screwdriver-operated zero device adjusts a spring-resistant mechanism connected to a cradle on the main beam. An oil-filled dashpot is provided.

The instrument is fitted with a level indicator and adjustable feet. Adjacent to the level indicator is a notice advising that the instrument must be level when in use.

30/11/78

.../2

The approval includes the 10 kg capacity instrument with a centre-zero weight reading face of capacity ± 250 g by 10 g scale intervals (see Figure 6).



NATIONAL STANDARDS COMMISSION

NOTIFICATION OF CHANGE

CERTIFICATE OF APPROVAL NO 6/4A/14

CHANGE No 1

The description of the

Avery Weighing Instrument Model 1306 BFP

given in Technical Schedule No 6/4A/14 issued on 30/11/78 is altered by changing the designation of Figure 6 to read "Figure 6/4A/14 - 6".

22/10/79

FIGURE 6/4A/14 - 1



Avery 1306 BFP

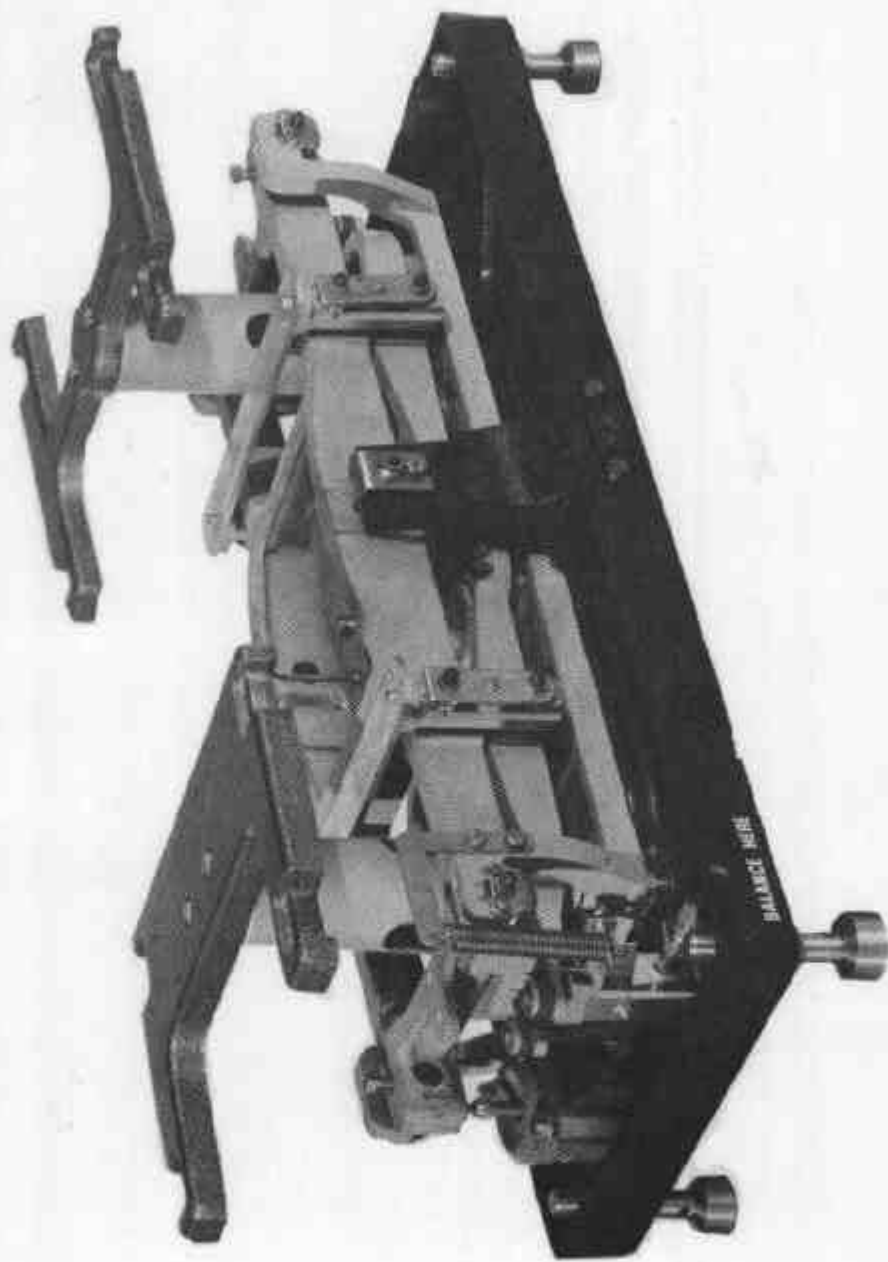
30/11/78

FIGURE 6/4A/14 - 2



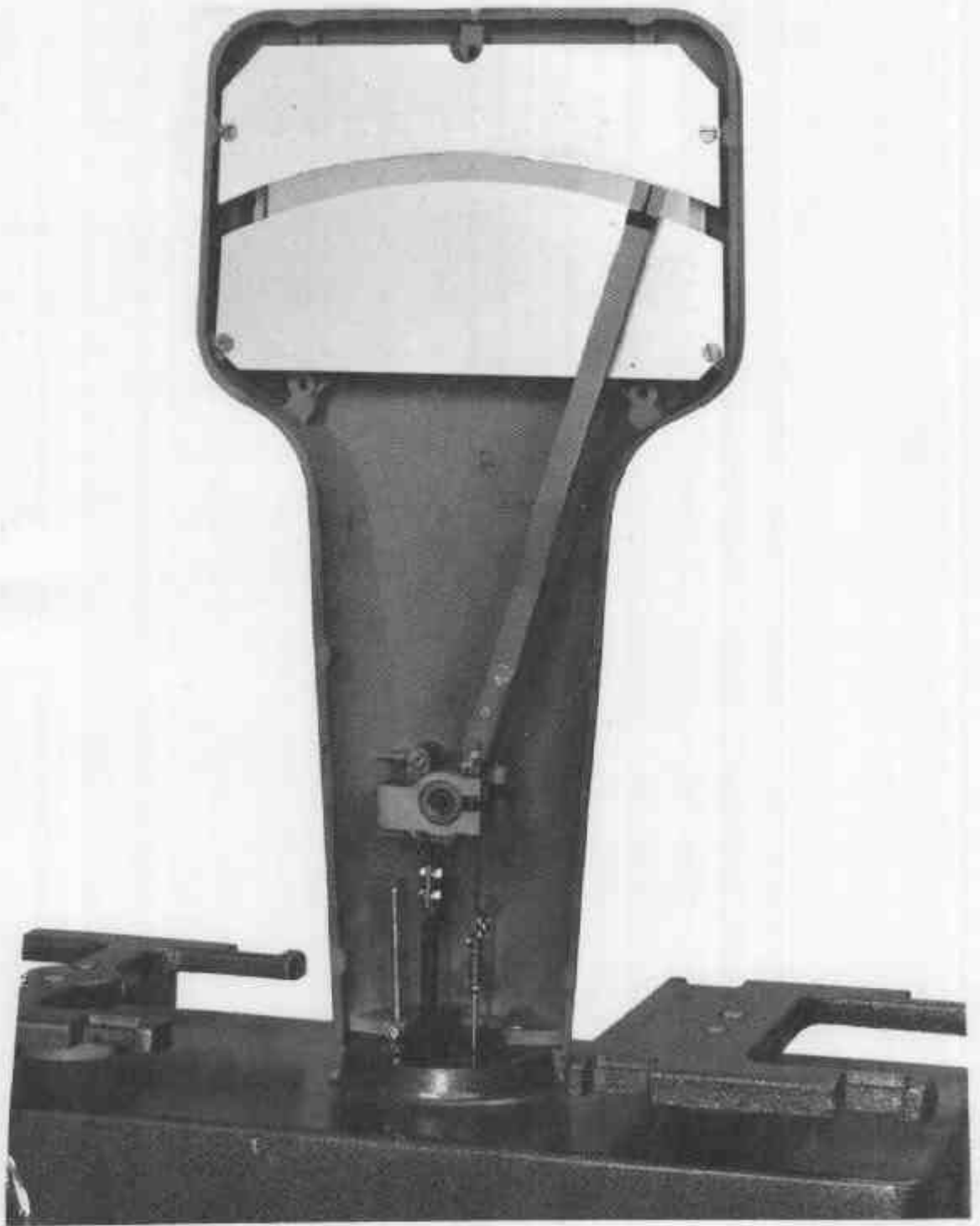
Avery 1306 BFF — Weight Reading Face with 5 g Scale Intervals

FIGURE 6/4A/14 - 3



Avery 1306 BFP — Lever Mechanism

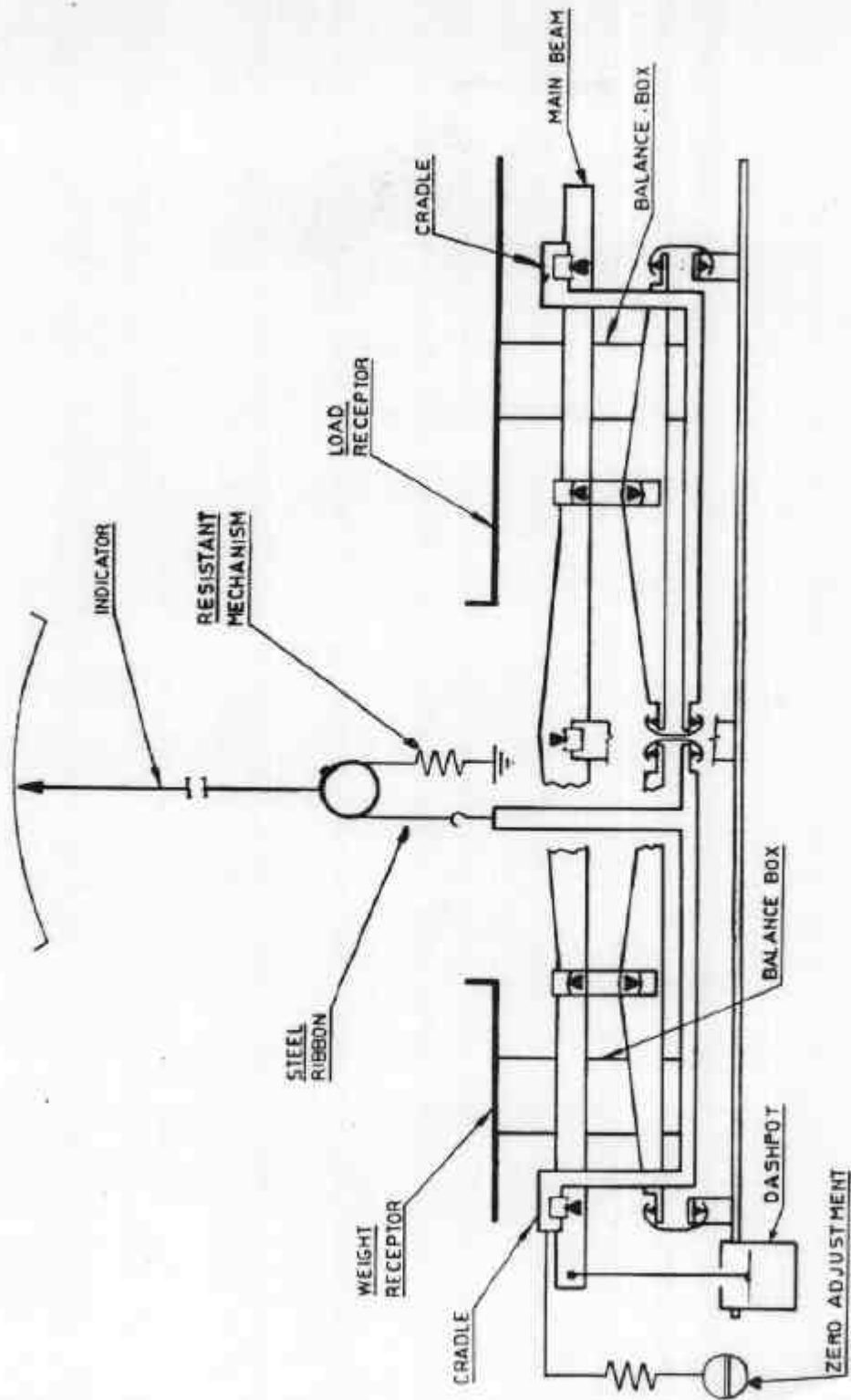
30/11/78



Avery 1306 BFP — Cam and Spring-resistant Mechanism

30/11/78

FIGURE 6/4A/14 - 5



30/11/78

Avery 1306 BFP — Lever and Resistant Mechanism — Schematic Diagram

FIGURE 6/4A/14 -- 6



Avery 1306 BFP — Weight Reading Face with 10 g Scale Intervals