

Your ref:

Correspondence: Executive Officer
P.O. Box 282 NOR
N.S.W. 2113

Our ref:

Telegrams: NATSTANCOM SY
Telephone: 888 3922

CERTIFICATE OF APPROVAL No 6/18/4

This is to certify that the patterns of the

Avery 4125 CUB Weighing Instrument

submitted by Avery Australia Ltd,
3-5 Birmingham Avenue,
Villawood, New South Wales, 2163,

have been approved under the Weights and Measures (Patterns of Instruments) Regulations as being suitable for use for trade.

Date of Approval: 1 December 1975

The patterns are described in Technical Schedule No 6/18/4, and in drawings and specifications lodged with the Commission.

The approval is subject to review on or after 1 December 1980.

All instruments conforming to this approval shall be marked with the approval number "NSC No 6/18/4".

Signed



Acting Executive Officer

17/3/76



NATIONAL STANDARDS COMMISSION

TECHNICAL SCHEDULE No 6/18/4

Pattern: Avery 4125 CUB Weighing Instrument

Submitter: Avery Australia Ltd,
3-5 Birmingham Avenue,
Villawood, New South Wales, 2163.

Date of Approval: 1 December 1975

Condition of Approval:

All instruments conforming to this approval shall be marked "NSC No 6/18/4".

Description:

The pattern (see Figure 1) is a self-indicating overhead-track weighing instrument of maximum capacity 250 kg, with a weight-reading face marked with 500 graduations.

*

The load receptor consists of a weigh rail of up to 0,6 metre in length supported by a single main lever connecting to a vertical pullrod through a transfer lever (see Figures 2 and 3). An adjustable balance weight is provided on the transfer lever. The weigh rail is aligned with the fixed rails by two links at each end (see Figure 4).

The headwork (see Figures 1 and 5) may be supported on a floor-mounted pillar, suspended from the ceiling or mounted on a wall bracket and comprises:

1. Headwork cabinet.
2. Spring-resistant mechanism suspended from the pullrod and connected at the lower end to adjustable levers which pivot, allowing the zero adjuster to increase or decrease the force on the resistant mechanism. A spring-loaded rack drives the indicator over a weight-reading face marked with 500 graduations.

* Note: The overhead lever system is approved for loads up to 250 kg only.



CP

NATIONAL STANDARDS COMMISSION

NOTIFICATION OF CHANGE

CERTIFICATE OF APPROVAL No 6/18/4

CHANGE No 1

The description of the

Avery 4125 CUB Weighing Instrument

given in Technical Schedule No 6/18/4, is altered by changing the length of the weigh rail, given in the first line of paragraph 2 under "Description", from 0,5 m to 0,6 m.

11/10/79



NATIONAL STANDARDS COMMISSION

CANCELLATION OF CERTIFICATE OF APPROVAL No 6/18/4

This is to certify that Certificate of Approval No 6/18/4 for the pattern and variants of the

Avery Model 4125 CUB Self-indicating Overhead-track Weighing Instrument

submitted by Avery Australia Limited

3-5 Birmingham Avenue
Villawood, NSW, 2163

will expire in respect of new instruments on 1 December 1983.

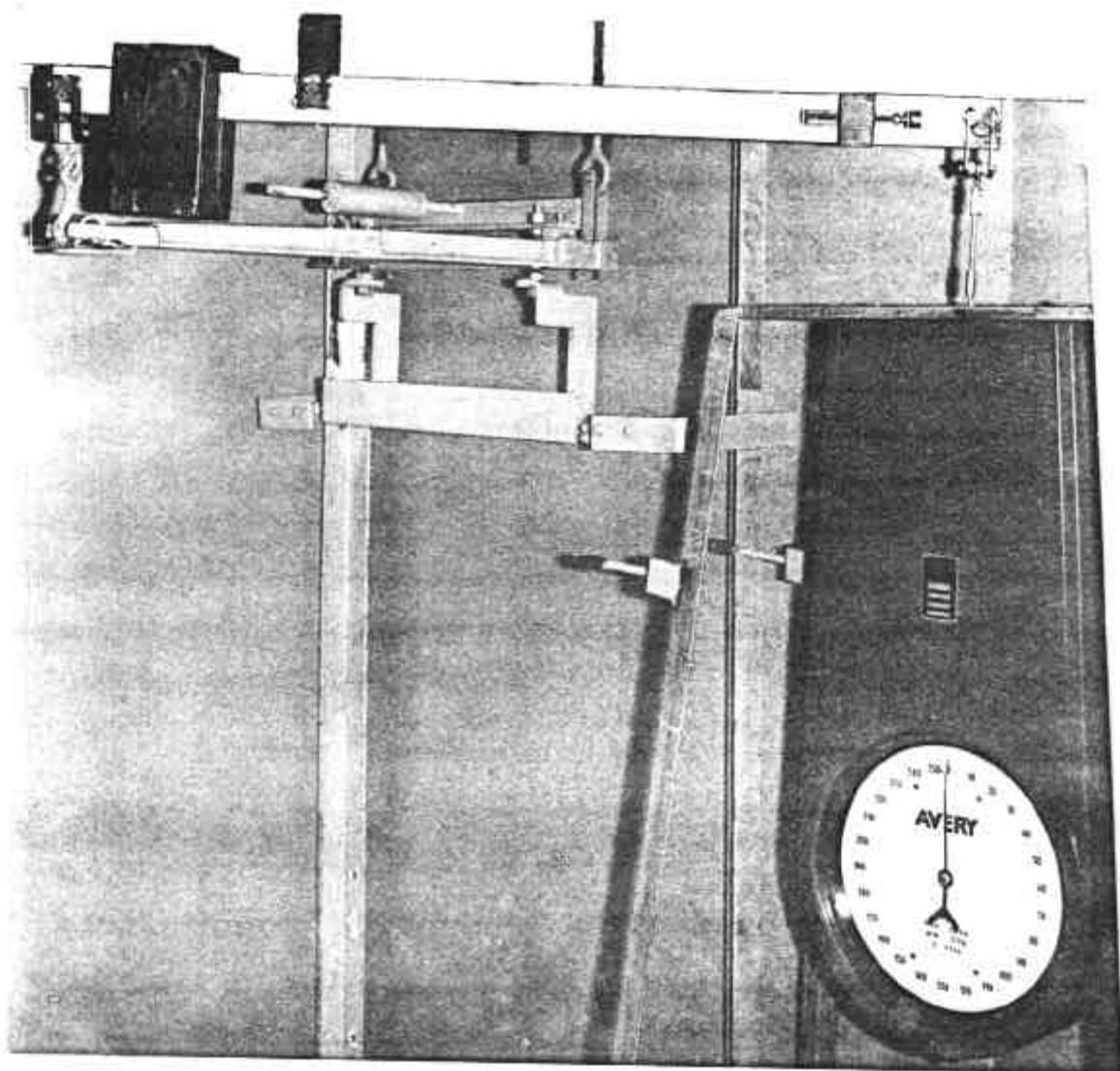
Instruments which were verified before that date may, with the concurrence of the State or Territorial verifying authorities, be submitted for reverification.

Signed

Executive Director

8/11/83

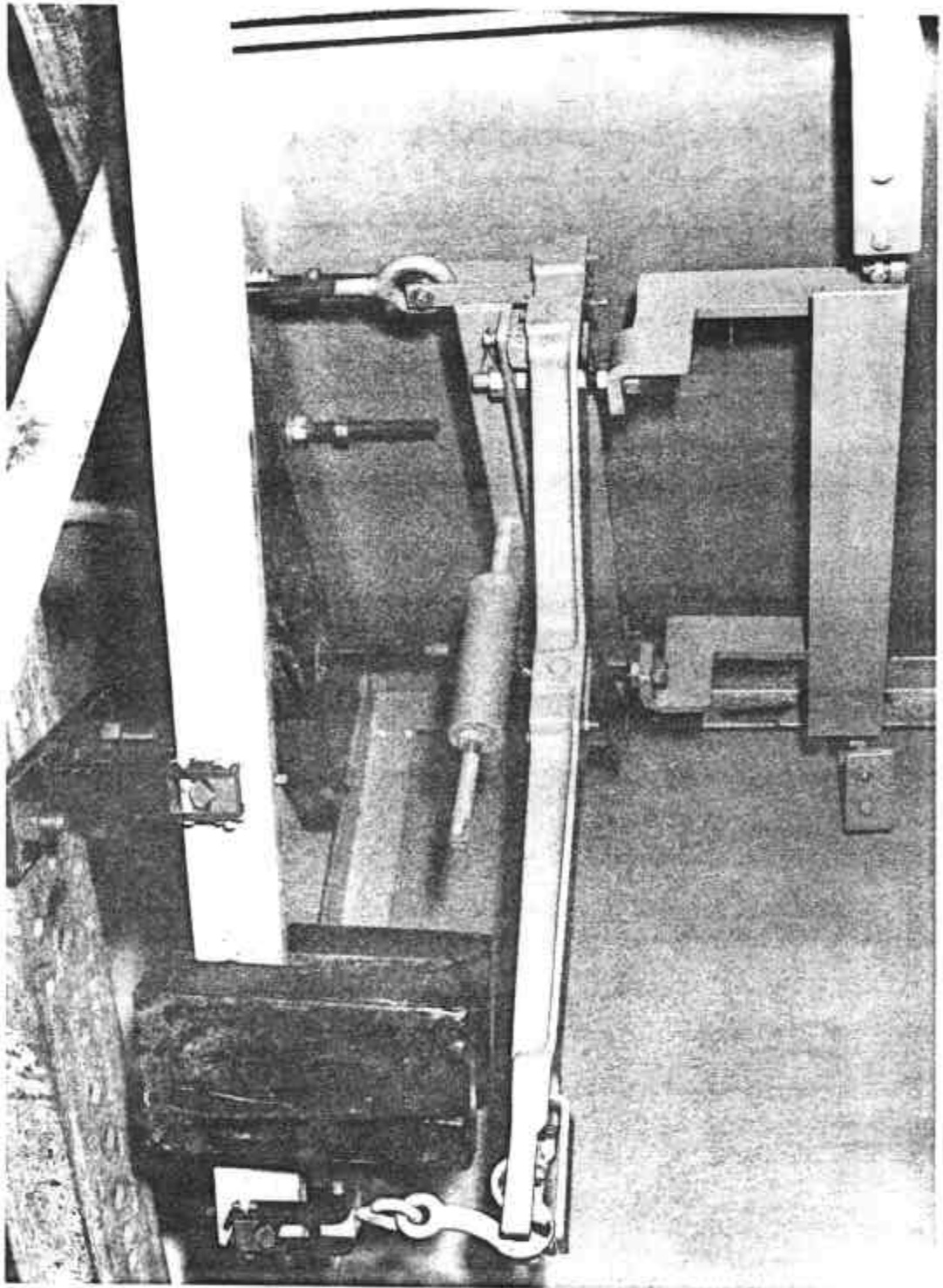
FIGURE 6/18/4 - 1



Avery 4215 CUB Weighing Instrument

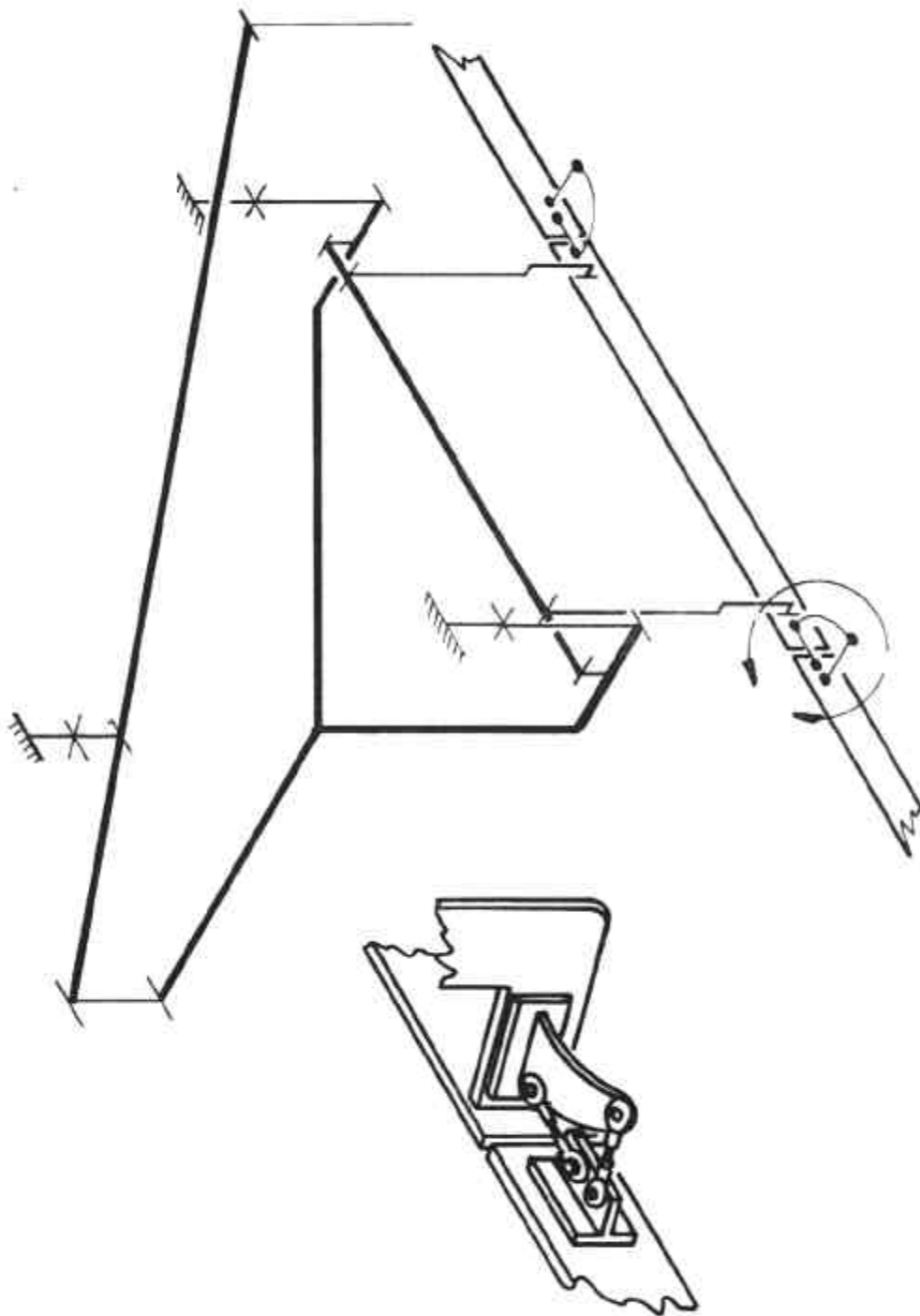
17/3/76

FIGURE 6/18/4 - 2



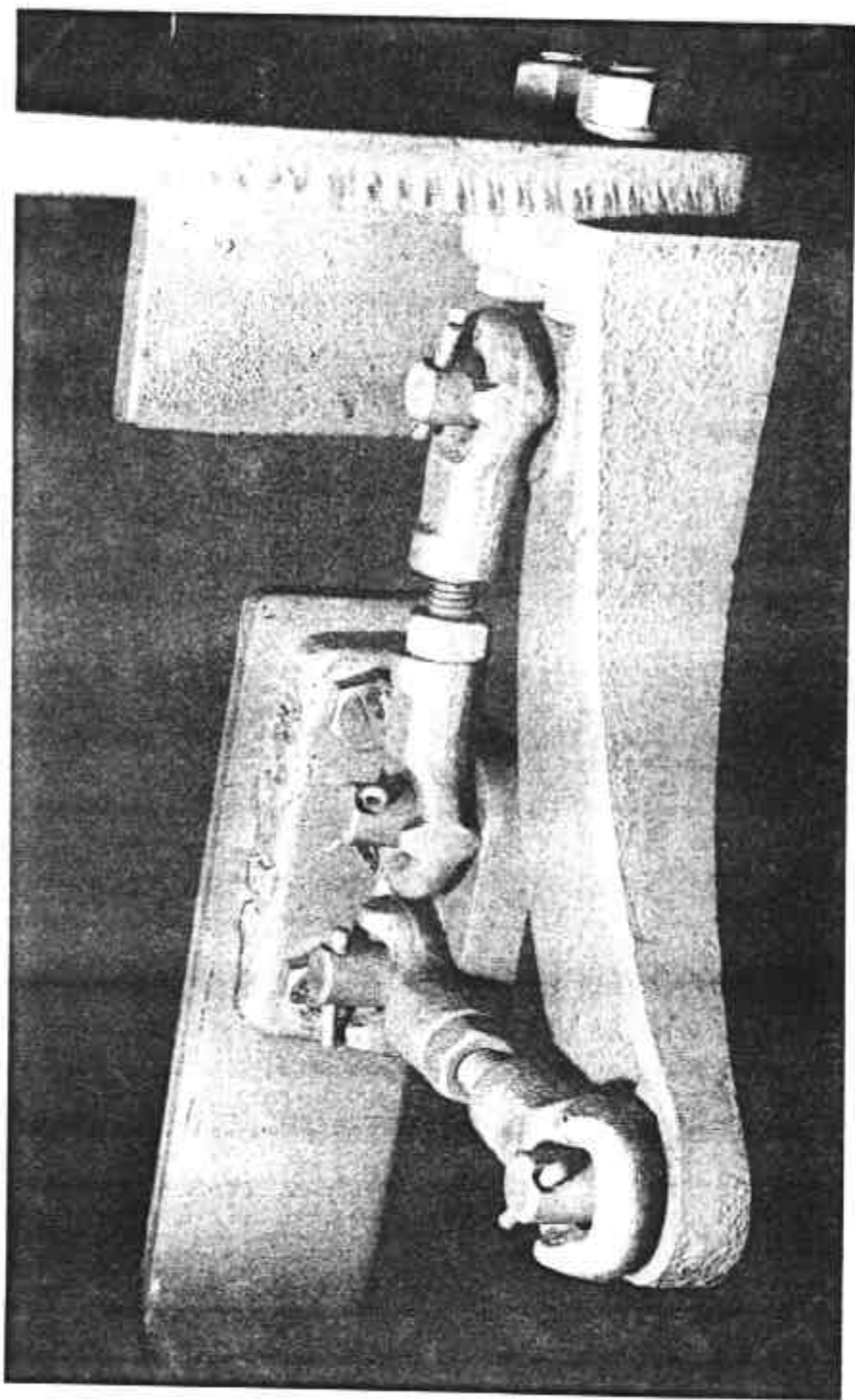
Avery 4125 CUB Overhead-track Levers

FIGURE 6/18/4 - 3



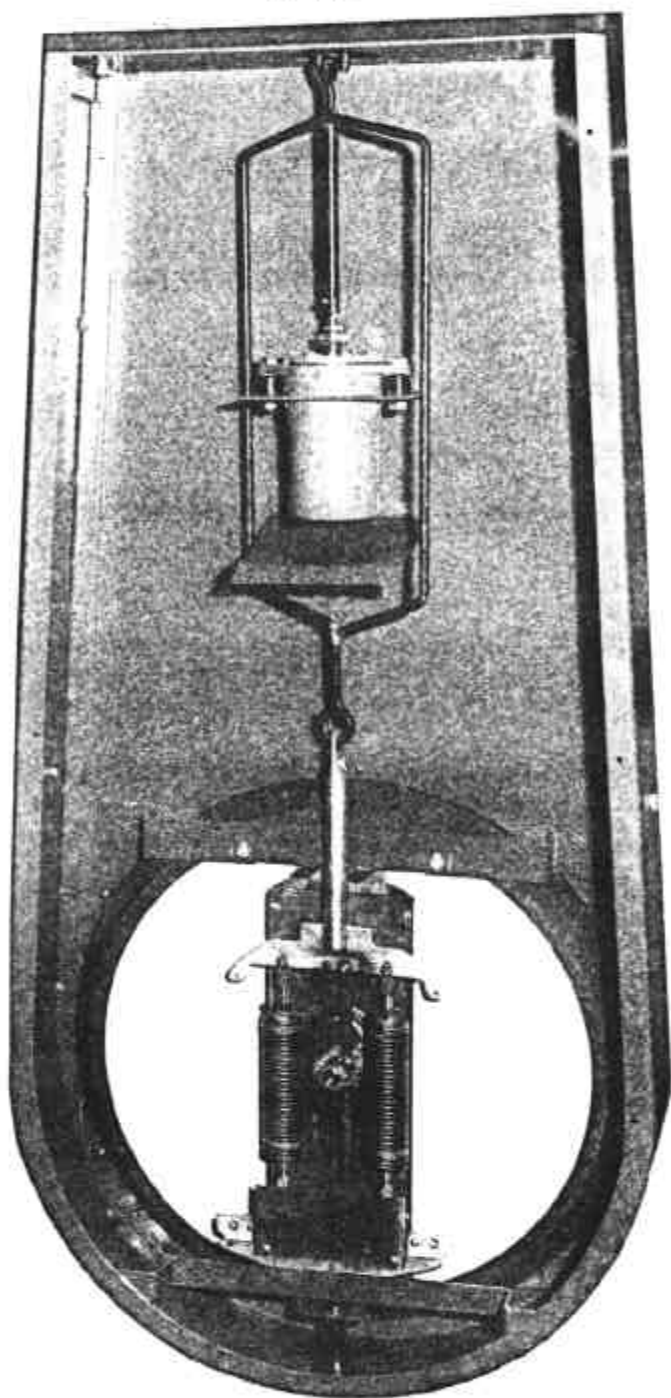
Avery 4125 CUB Overhead-track Levers -- Schematic Diagram

FIGURE 6/18/4 - 4



Avery 4125 CUB Rail-alignment Links

FIGURE 6/18/4 - 5



Avery 4125 CUB — Headwork