



Australian Government

**National Measurement
Institute**

12 Lyonpark Road, North Ryde NSW 2113

Cancellation
Certificate of Approval No 6/18/29

Issued by the Chief Metrologist under Regulation 60
of the
National Measurement Regulations 1999

This is to certify that the approval for use for trade granted in Certificate of Approval
No 6/18/29 issued 6 October 1993 in respect of the

Associated Scales Model TR-600 Weighing Instrument
submitted by Associated Scale Services Pty Ltd
now of 12/30 McCotter Street
Acacia Ridge QLD 4110

has been cancelled in respect of new instruments as from 1 December 2004.

Signed by a person authorised by the Chief Metrologist
to exercise his powers under Regulation 60 of the
National Measurement Regulations 1999.

National Standards Commission



Certificate of Approval

No 6/18/29

Issued under Regulation 9
of the
National Measurement (Patterns of Measuring Instruments) Regulations

This is to certify that an approval for use for trade has been granted in respect of the

Associated Scales Model TR-600 Weighing Instrument

submitted by Associated Scale Services Pty Ltd
Unit 3/71 Rodwell Street
Coopers Plains QLD 4108.

NOTE: This Certificate relates to the suitability of the pattern of the instrument for use for trade only in respect of its metrological characteristics. This Certificate does not constitute or imply any guarantee of compliance by the manufacturer or any other person with any requirements regarding safety.

CONDITIONS OF APPROVAL

This approval is subject to review on or after 1/7/98.
This approval expires in respect of new instruments on 1/7/99.

Instruments purporting to comply with this approval shall be marked NSC No 6/18/29 and only by persons authorised by the submittor.

Auxiliary devices used with this instrument shall comply with the requirements of General Supplementary Certificate No S1/0/A.

It is the submitter's responsibility to ensure that all instruments marked with this approval number are constructed as described in the documentation lodged with the Commission and with the relevant Certificate of Approval and Technical Schedule. Failure to comply with this Condition may attract penalties under Section 19B of the National Measurement Act and may result in cancellation or withdrawal of the approval, in accordance with the Commission's Document 106.

The Commission reserves the right to examine any instrument or component of an instrument purporting to comply with this approval.

DESCRIPTIVE ADVICE

Pattern: approved 14/6/93

- An Associated Scales model TR-600 self-indicating overhead weighing instrument of 600 kg maximum capacity.

Technical Schedule No 6/18/29 describes the pattern.

FILING ADVICE

The documentation for this approval comprises:

Certificate of Approval No 6/18/29 dated 6/10/93
Technical Schedule No 6/18/29 dated 6/10/93 (incl. Test Procedure)
Figures 1 and 2 dated 6/10/93

Signed and sealed by a person authorised under Regulation 9 of the National Measurement (Patterns of Measuring Instruments) Regulations to exercise the powers and functions of the Commission under this Regulation.

A handwritten signature in black ink, appearing to be 'J. Kelly', written in a cursive style.



National Standards Commission

TECHNICAL SCHEDULE No 6/18/29

Pattern: Associated Scales Model TR-600 Overhead Weighing Instrument.

Submitter: Associated Scale Services Pty Ltd
Unit 3/71 Rodwell Street
Coopers Plains QLD 4108.

1. Description of Pattern

An Associated Scales model TR-600 overhead weighing instrument of 600 kg maximum capacity and approved for use with up to 3000 verification scale intervals.

1.1 Trackwork

The model TR-600 trackwork (Figures 1 and 2) has the weigh-rail up to 1200 mm long suspended from a frame supported by three load cells.

1.2 Load Cells

Three Kelba model KA1000C3 load cells of 1000 kg capacity are used and mounted as shown in Figure 2. Note that only this make, model and capacity of load cell shall be used.

1.3 Indicator

A Gedge Systems model GS1650 Mk3 digital indicator is used as described in the documentation of NSC approval No S193A.

1.4 Verification/Certification Provision

Provision is made for a verification/certification mark to be applied.

1.5 Sealing Provision

Provision is made for the calibration adjustments to be sealed using the screws on the face of the indicator.

1.6 Markings

Instruments are marked with the following data, together in one location:

Manufacturer's name or mark	
Serial number	
NSC approval numbers - instrument	NSC No 6/18/29
- indicator	NSC No S
Load cell serial numbers (#)	
Accuracy class	III
Maximum capacity	Max kg *
Minimum capacity	Min kg *
Verification scale interval	e = kg *

- * These are repeated adjacent to each reading face.
- # Alternatively, these may be marked adjacent to the verification mark.

TEST PROCEDURE

Instruments should be tested in conjunction with any tests specified in the approval documentation for the indicator used, and in accordance with any relevant tests specified in the Inspector's Handbook.

Maximum Permissible Errors at Verification/Certification

The maximum permissible errors for increasing and decreasing loads, expressed in terms of verification scale interval (e), with the instrument adjusted to zero within $\pm 0.25e$ at no load, are:

- $\pm 0.5e$ for loads from 0 to $500e$;
- $\pm 1.0e$ for loads over $500e$ up to $2000e$; and
- $\pm 1.5e$ for loads over $2000e$.



National Standards Commission
Notification of Change
Certificate of Approval No 6/18/29
Change No 1

The following changes are made to the approval documentation for the

Associated Scales Model TR-600 Overhead Weighing Instrument

submitted by Associated Scale Service Pty Ltd
Unit 3/71 Rodwell Street
Coopers Plains QLD 4108.

In Certificate of Approval No 6/18/29 and its Technical Schedule, both dated 6 October 1993;

- (a) All references to the submittor's address should be amended to read:
- 1106 Ipswick Road
Sunnybank QLD 4109.
- (b) The Condition of Approval referring to the review of the approval should be amended to read:
- "This approval is subject to review on or after **1 November 2003.**"
- (c) The Condition of Approval referring to the expiry of the approval should be deleted.
- (d) Clause **1.3 Indicator** should be amended to read, in part:
- "A Gedge Systems ... indicator ... NSC approval No S193**B.**"

Signed and sealed by a person authorised under Regulation 9 of the National Measurement (Patterns of Measuring Instruments) Regulations to exercise the powers and functions of the Commission under this Regulation.

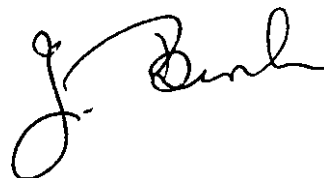
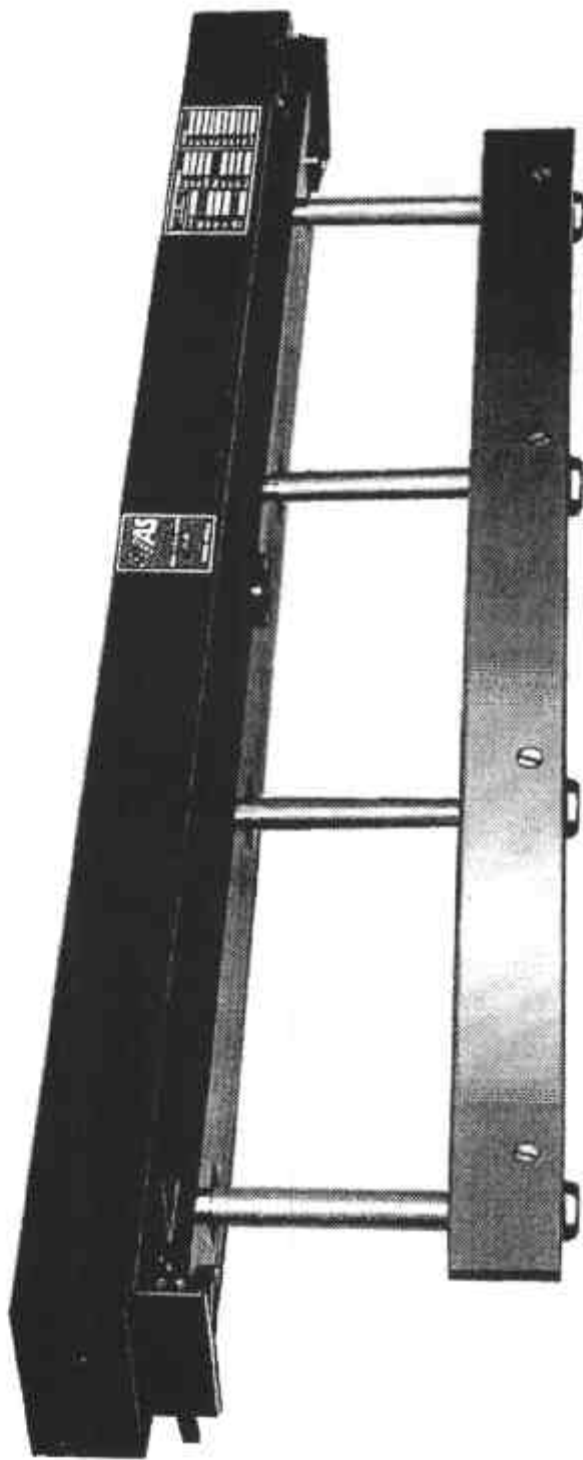
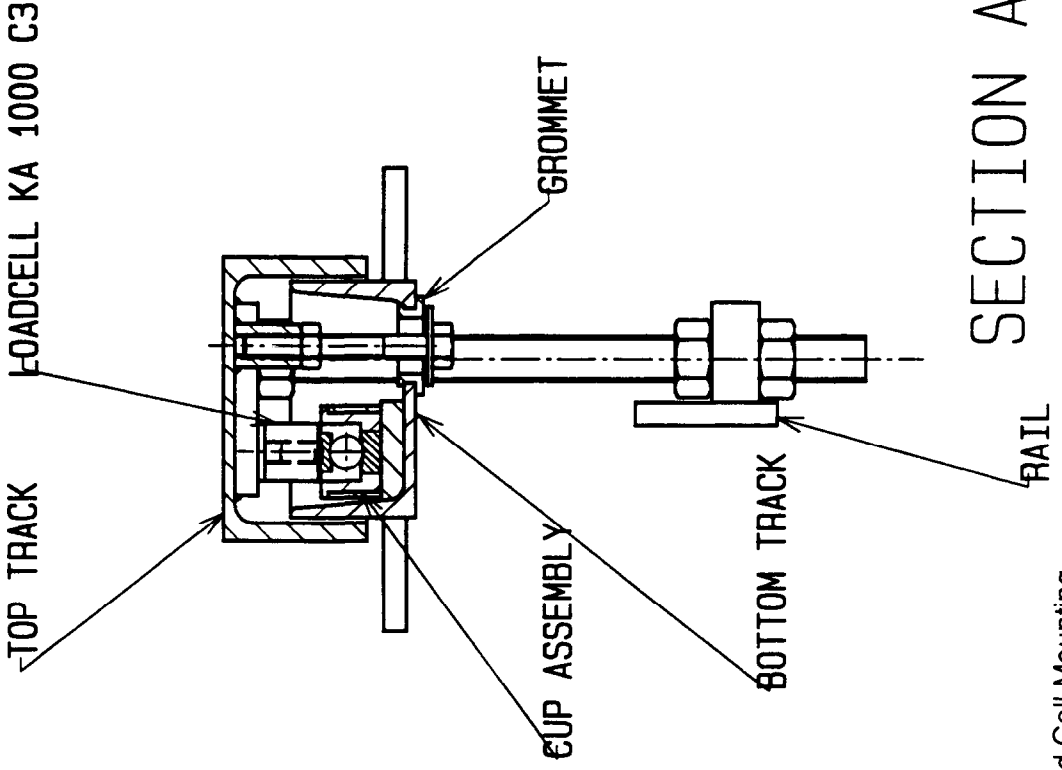
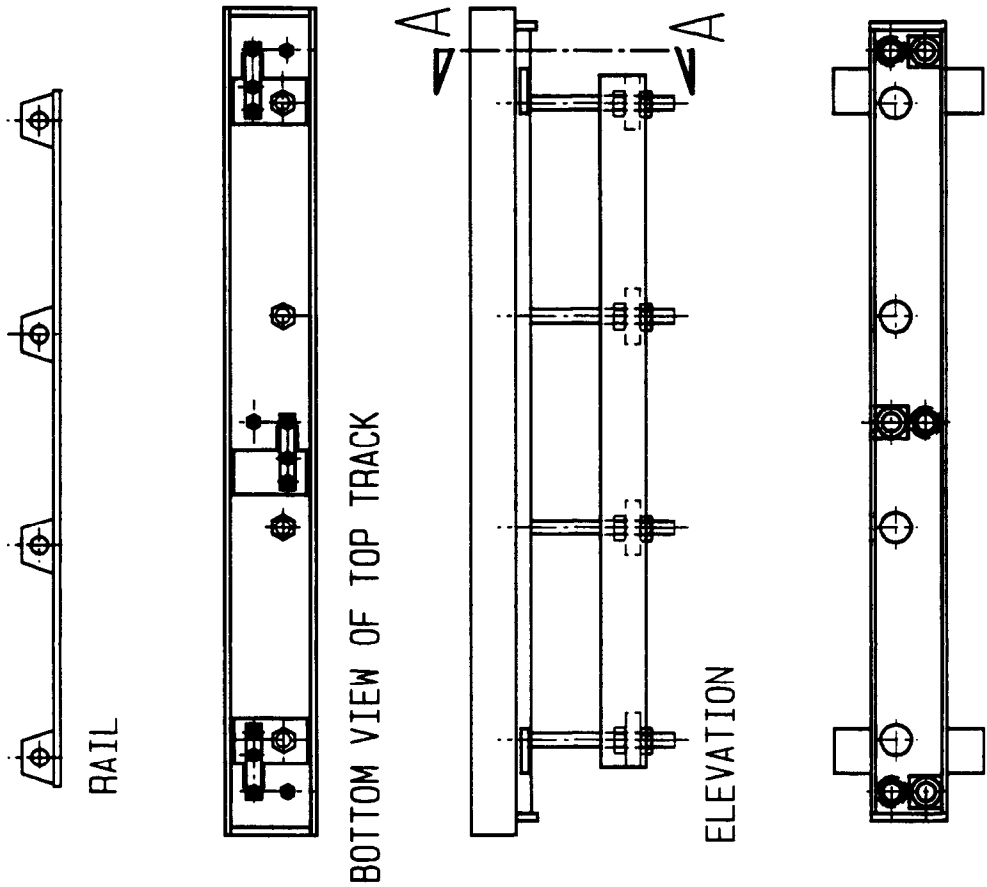


FIGURE 6/18/29 - 1



Associated Scales Model TR-600 Trackwork

FIGURE 6/18/29 - 2



Mod: TR-600 Trackwork and Load Cell Mounting